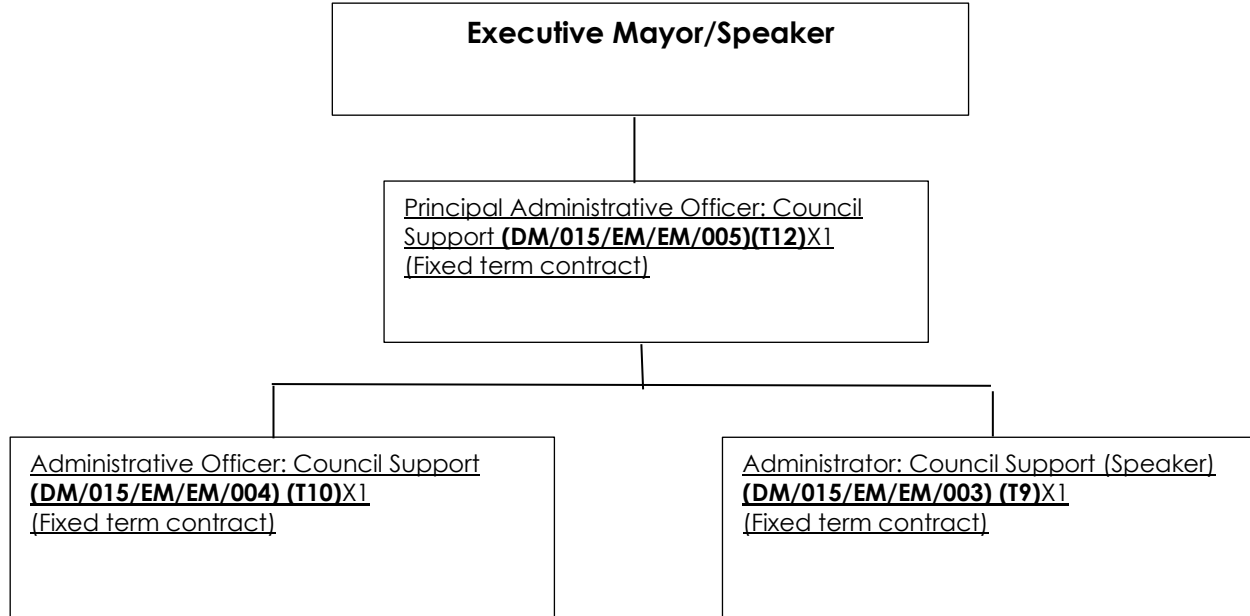
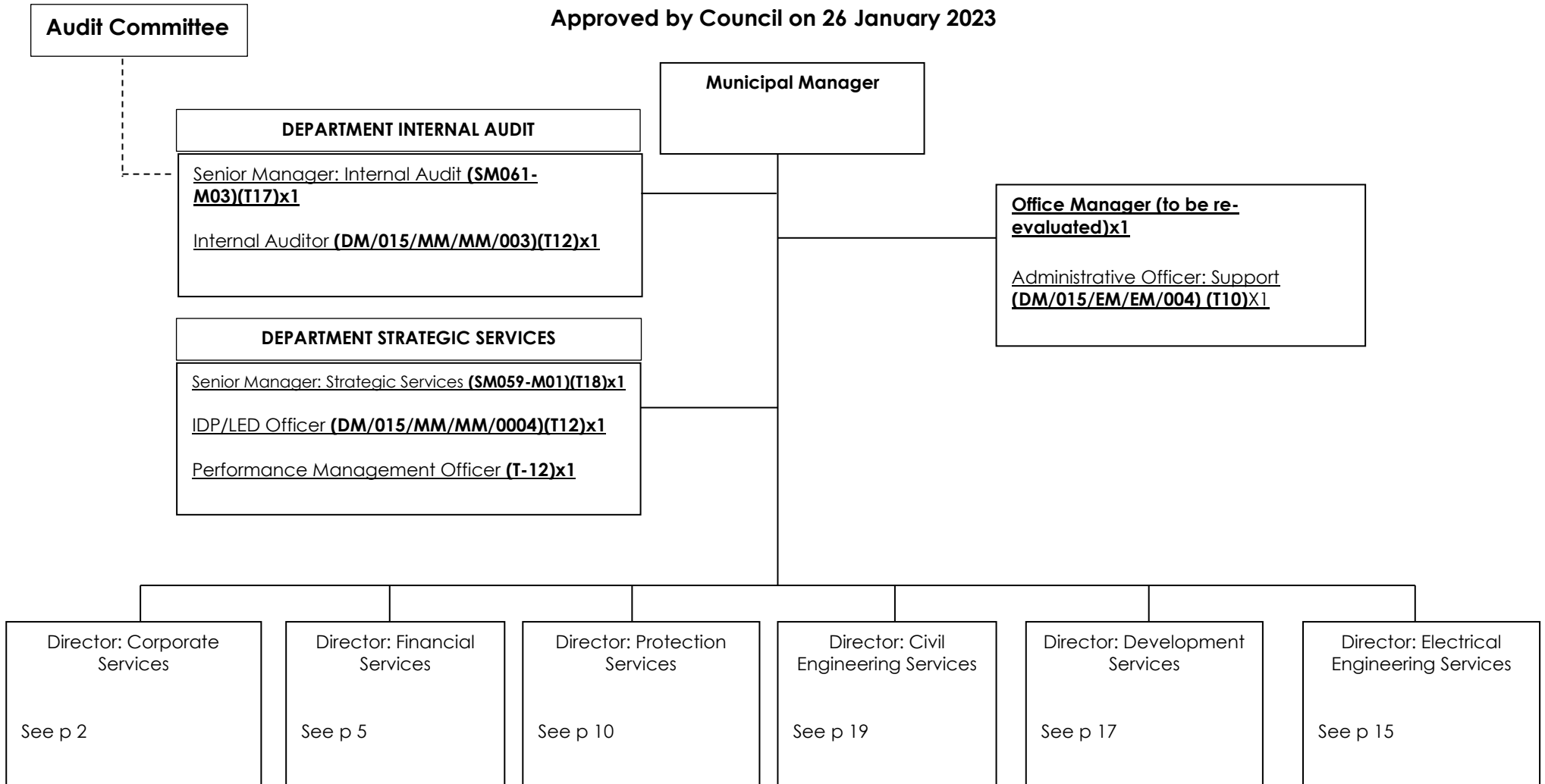


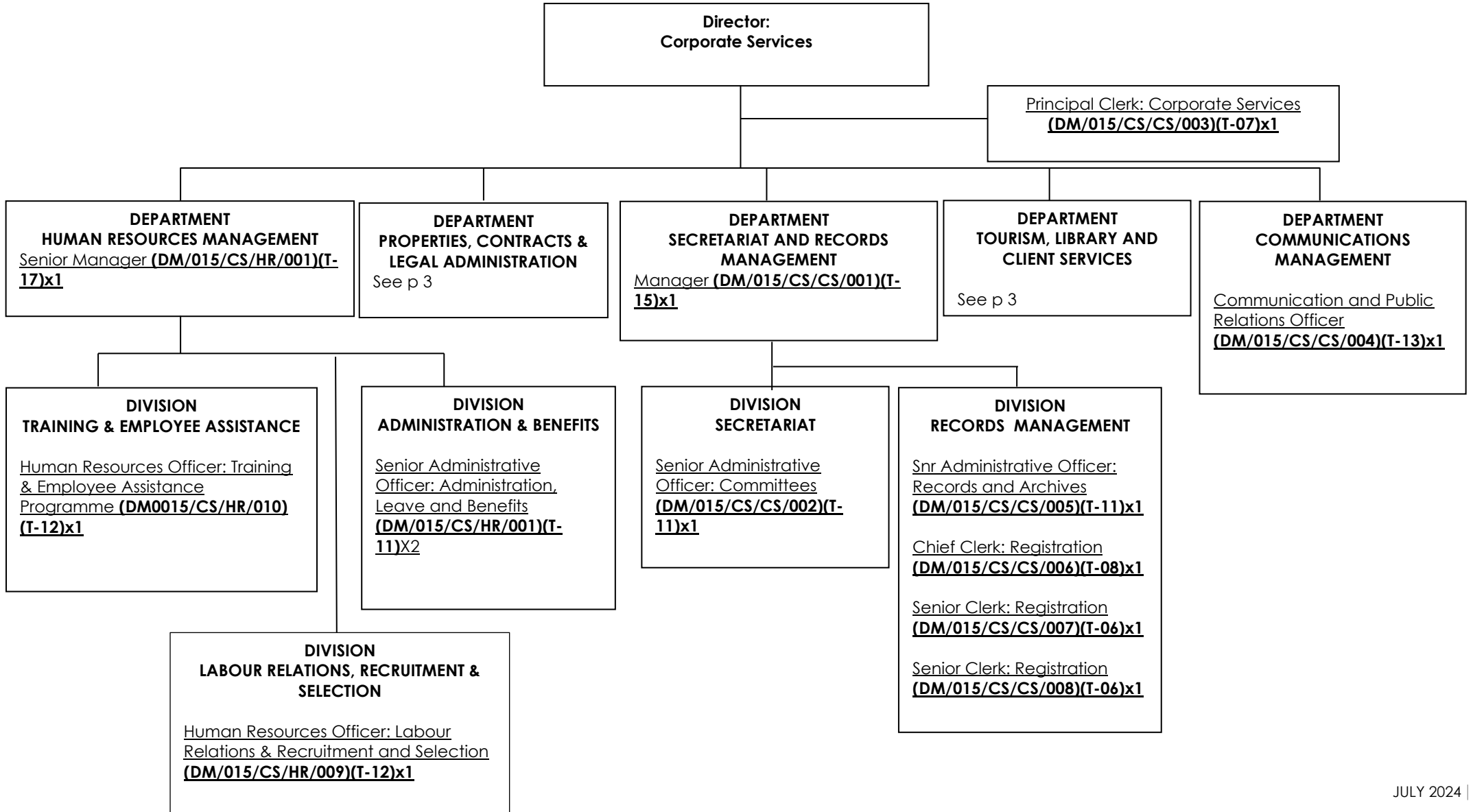
**SWARTLAND MUNICIPALITY
APPROVED ORGANISATIONAL STRUCTURE
OFFICE OF THE POLITICAL OFFICE BEARERS
Approved by Council on 28 March 2024**



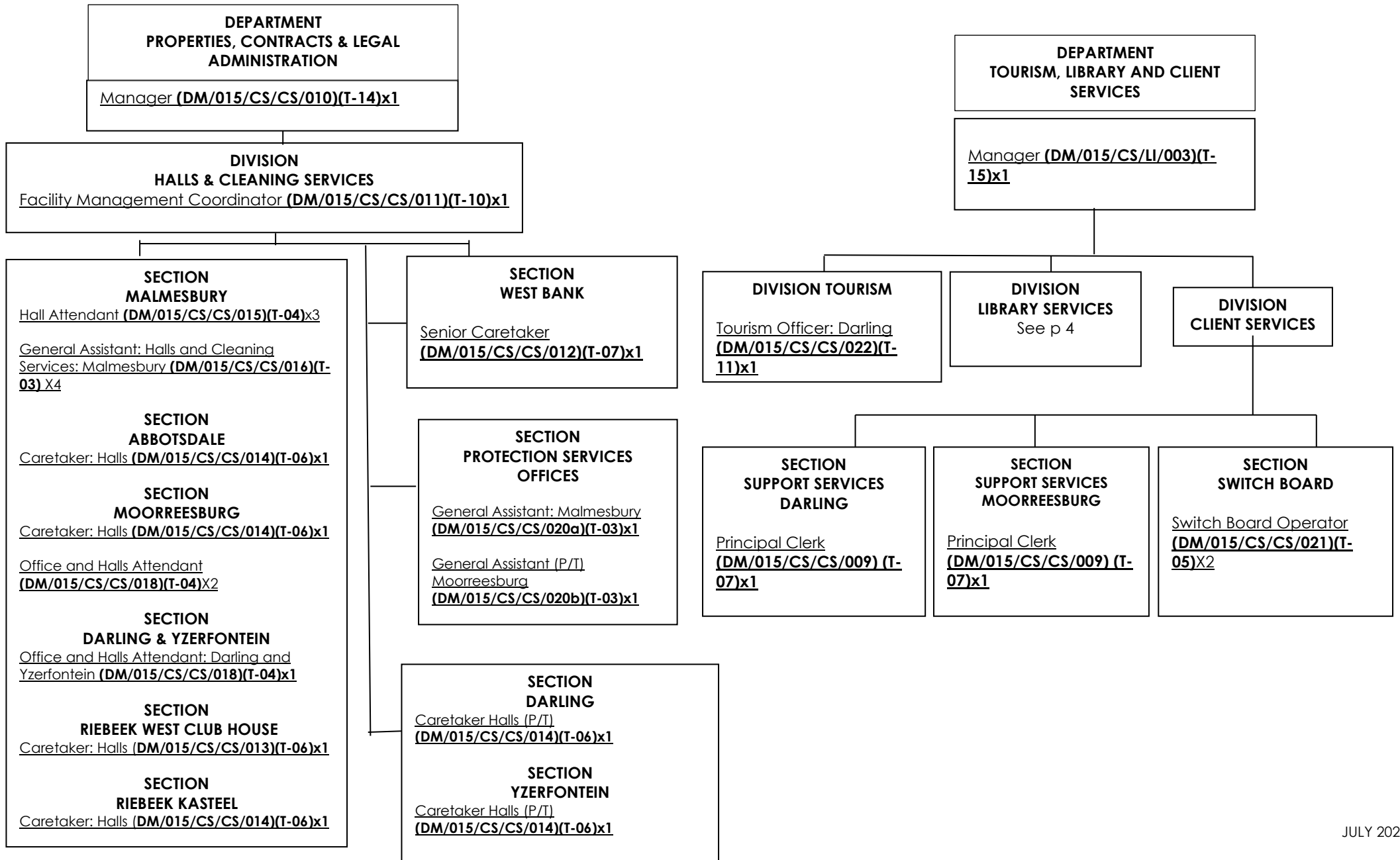
**SWARTLAND MUNICIPALITY
APPROVED ORGANISATIONAL STRUCTURE
OFFICE OF THE MUNICIPAL MANAGER
Approved by Council on 26 January 2023**



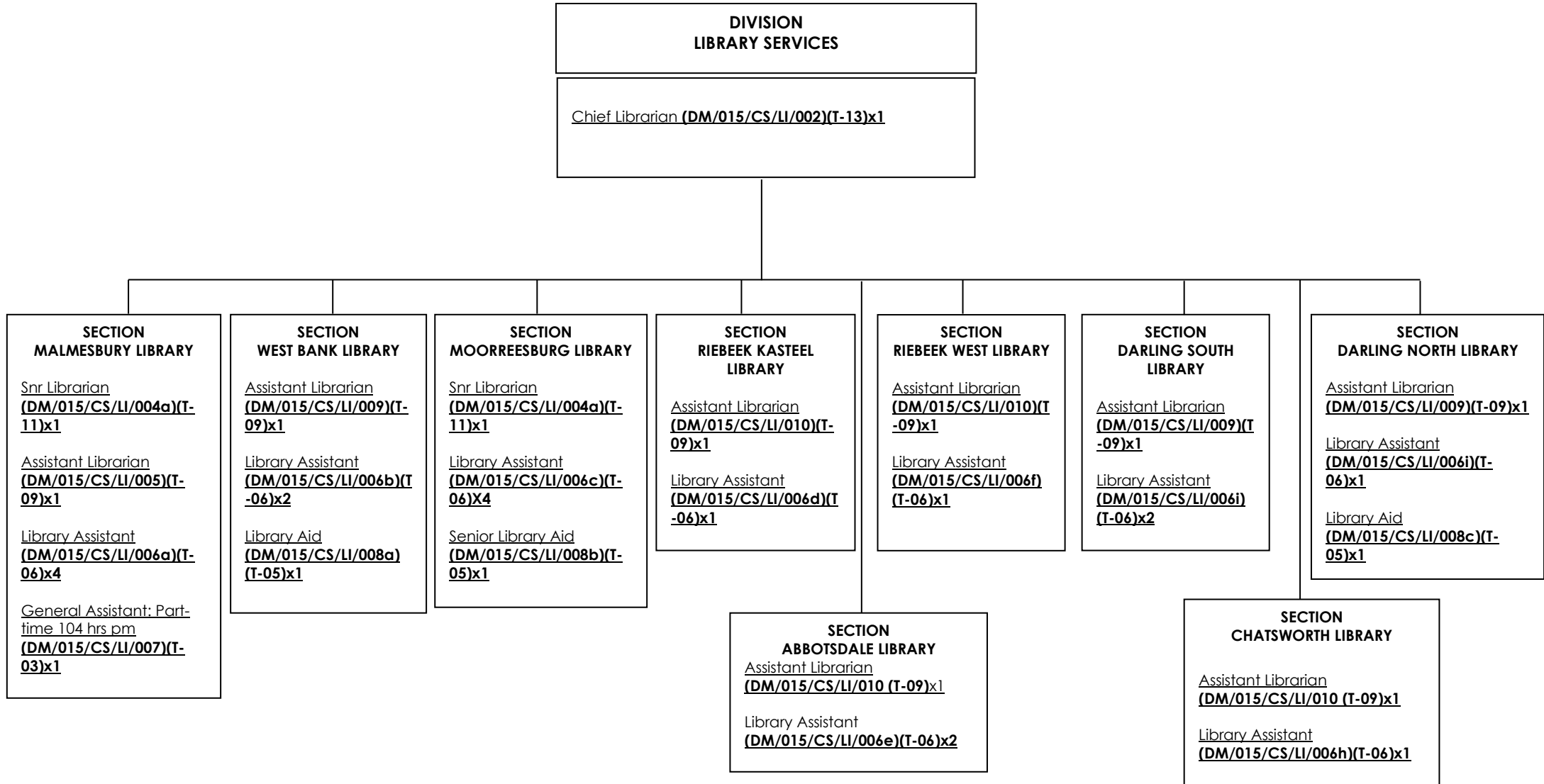
**SWARTLAND MUNICIPALITY
APPROVED ORGANISATIONAL STRUCTURE
DIRECTORATE CORPORATE SERVICES
Approved by Council on 26 January 2023**



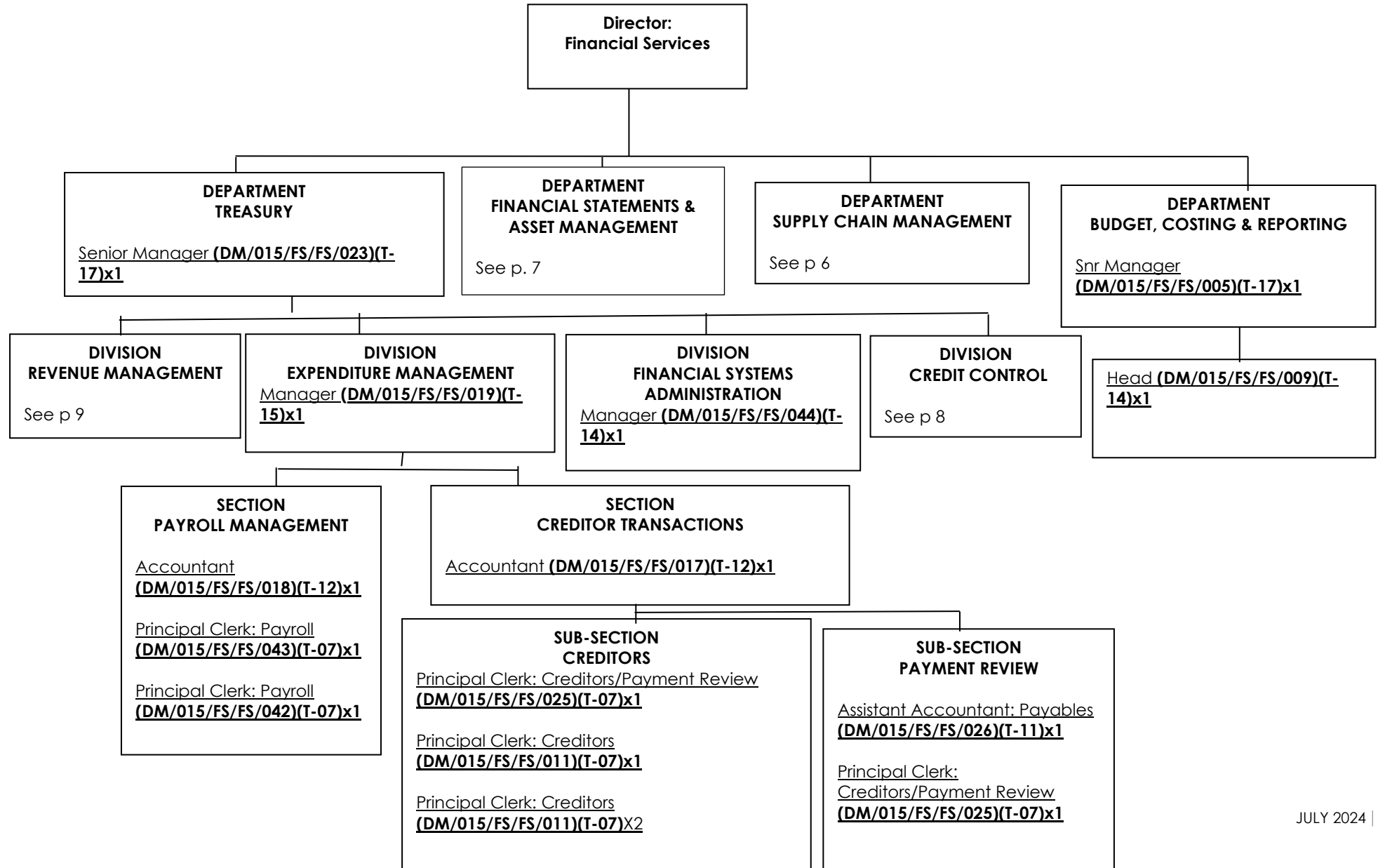
DIRECTORATE CORPORATE SERVICES



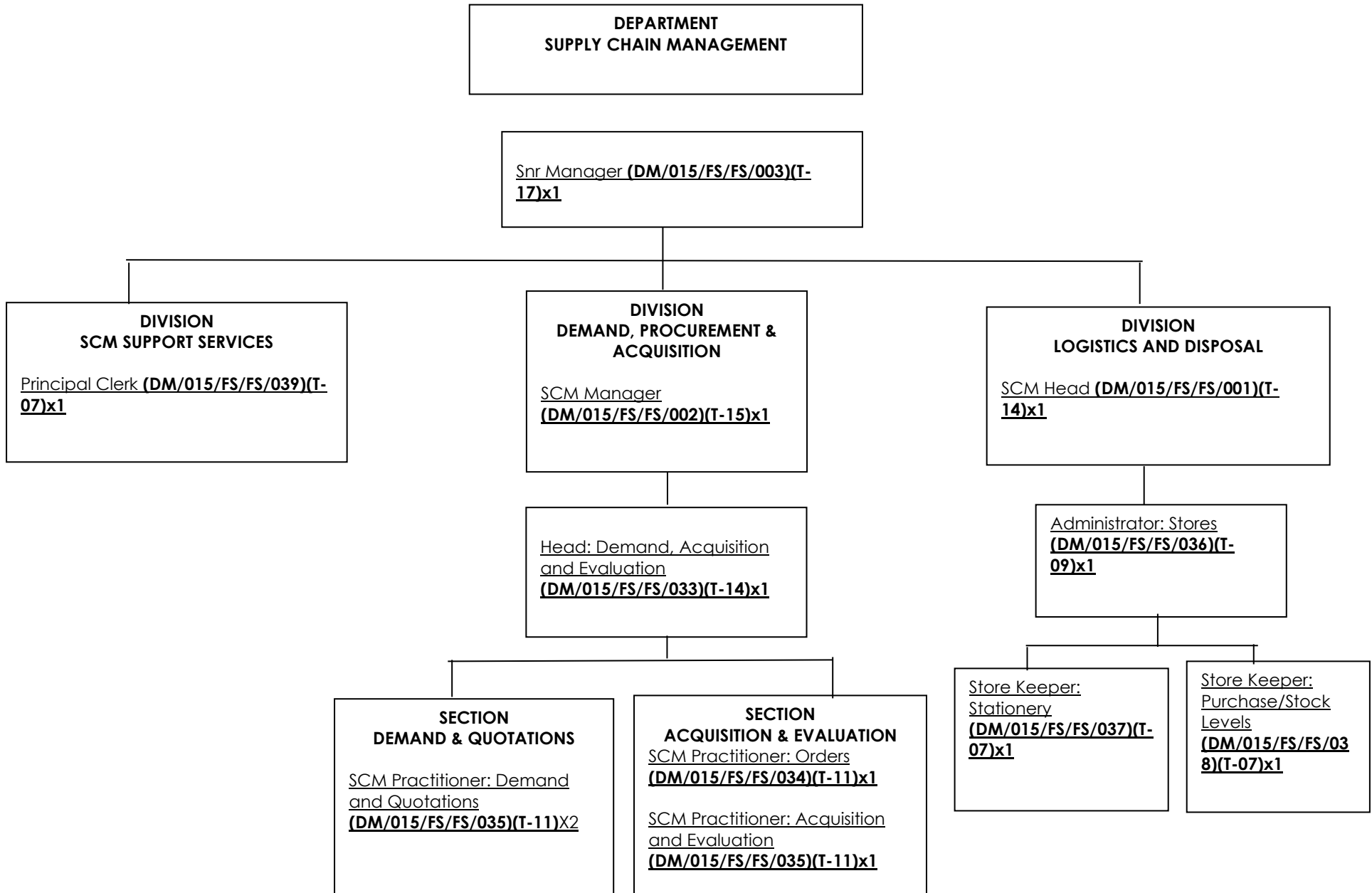
DIRECTORATE CORPORATE SERVICES

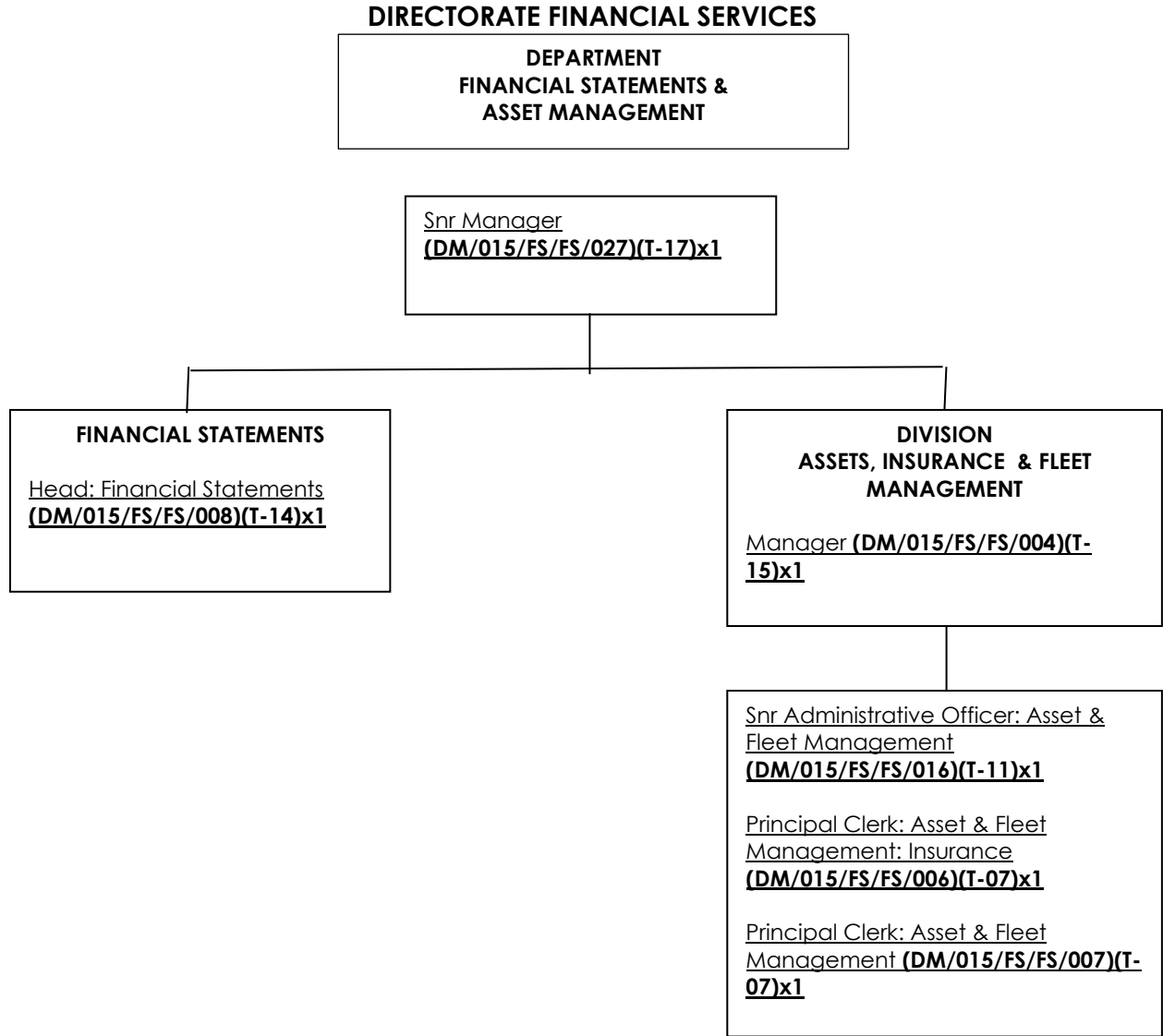


**SWARTLAND MUNICIPALITY
APPROVED ORGANISATIONAL STRUCTURE
DIRECTORATE FINANCIAL SERVICES
Approved by Council on 26 January 2023**

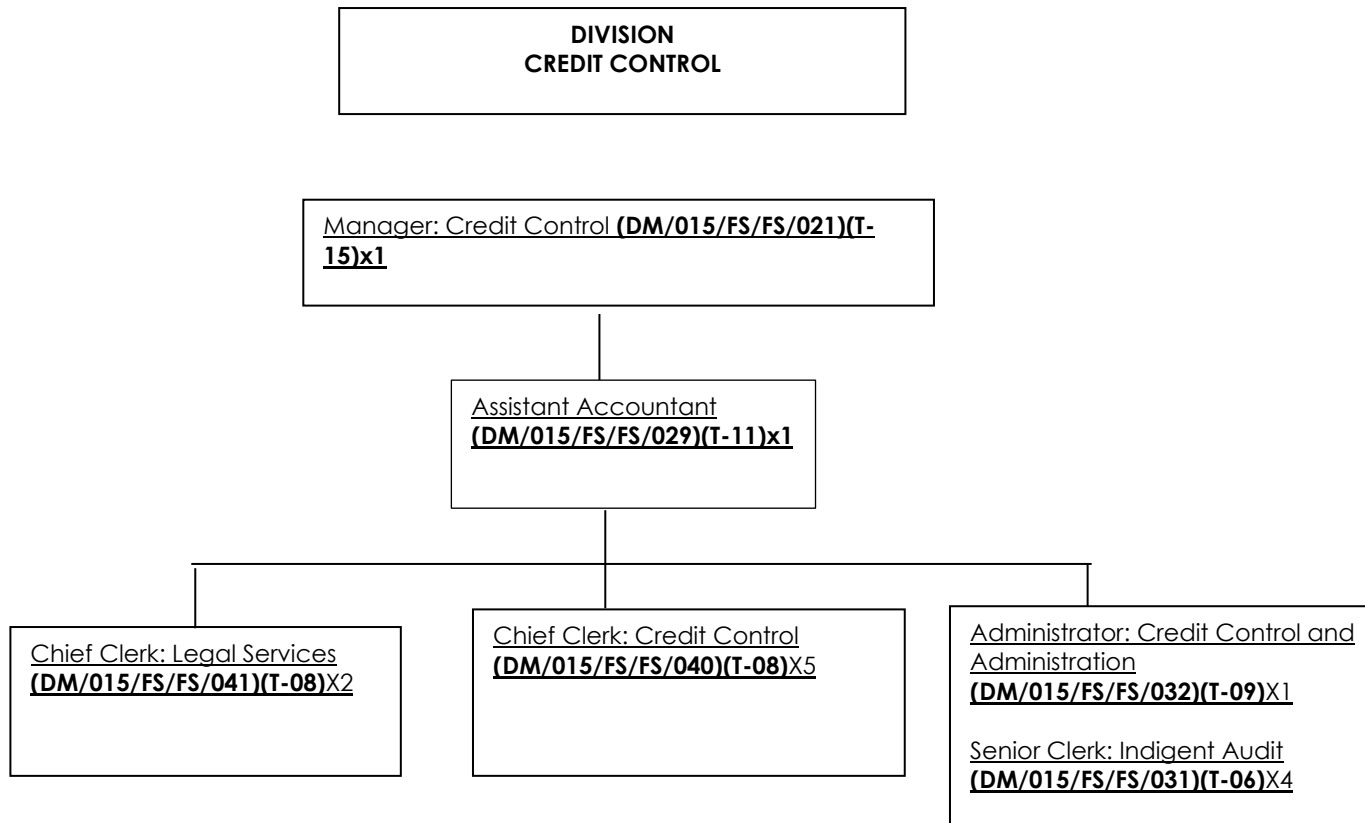


DIRECTORATE FINANCIAL SERVICES

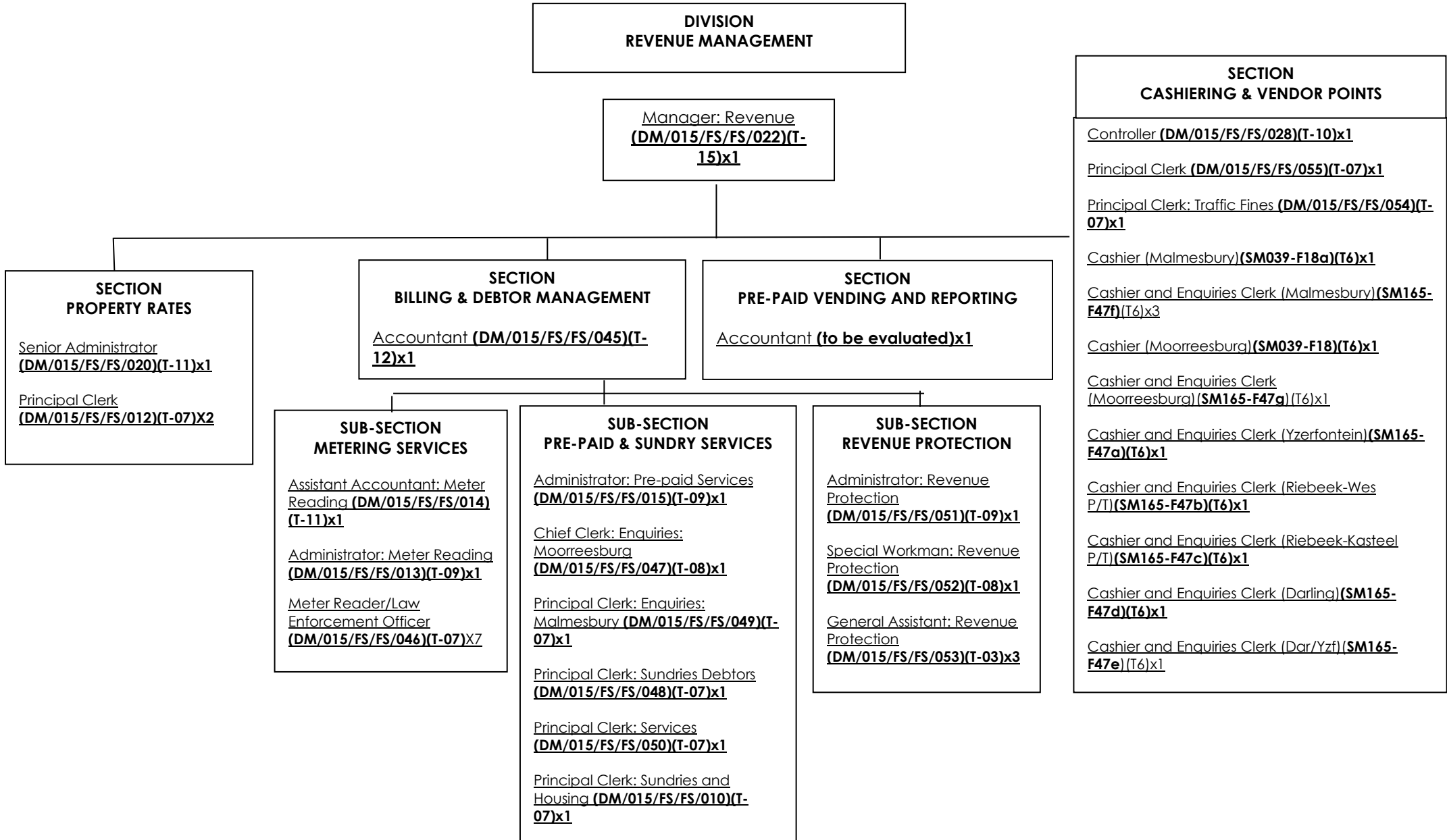




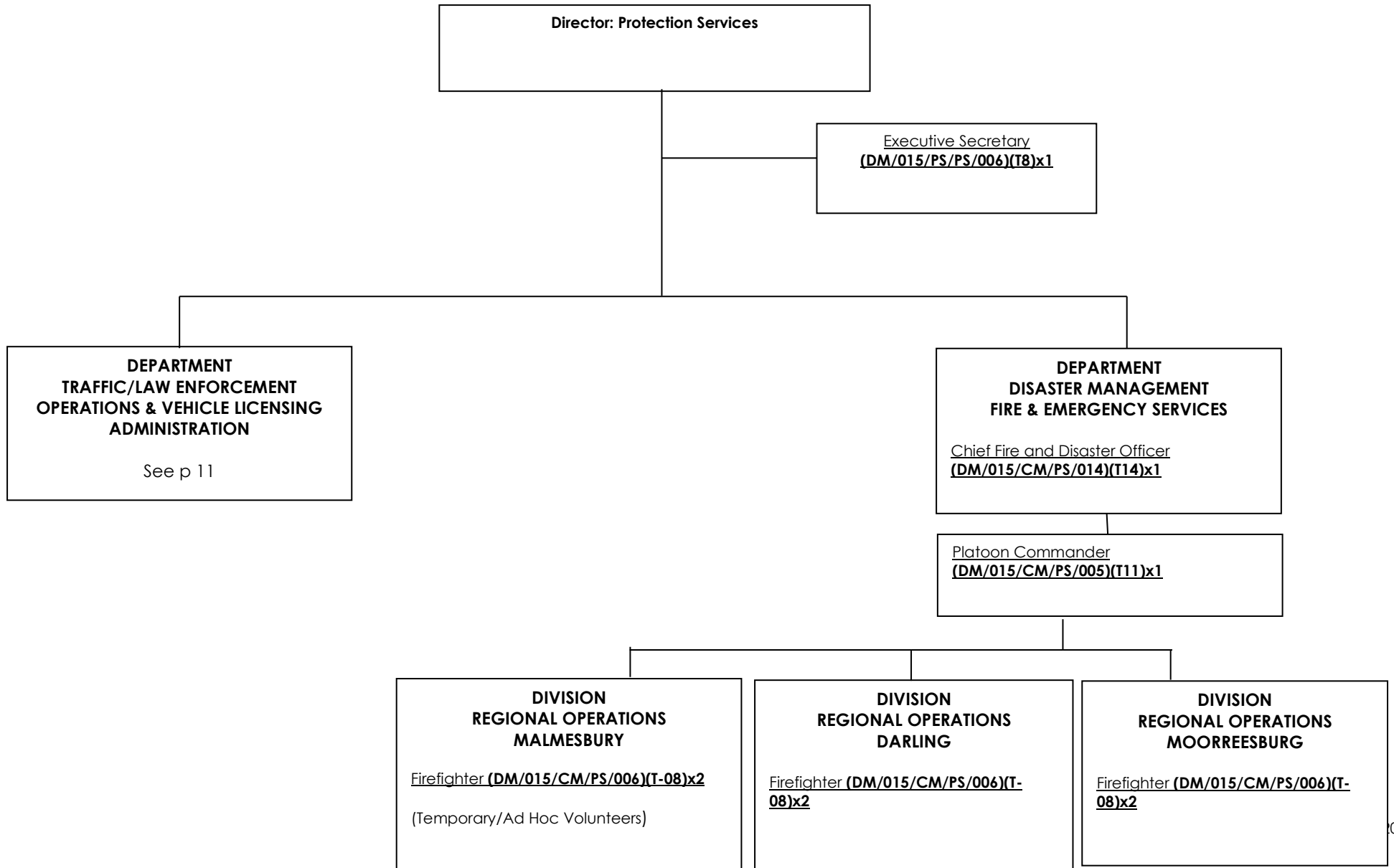
DIRECTORATE FINANCIAL SERVICES



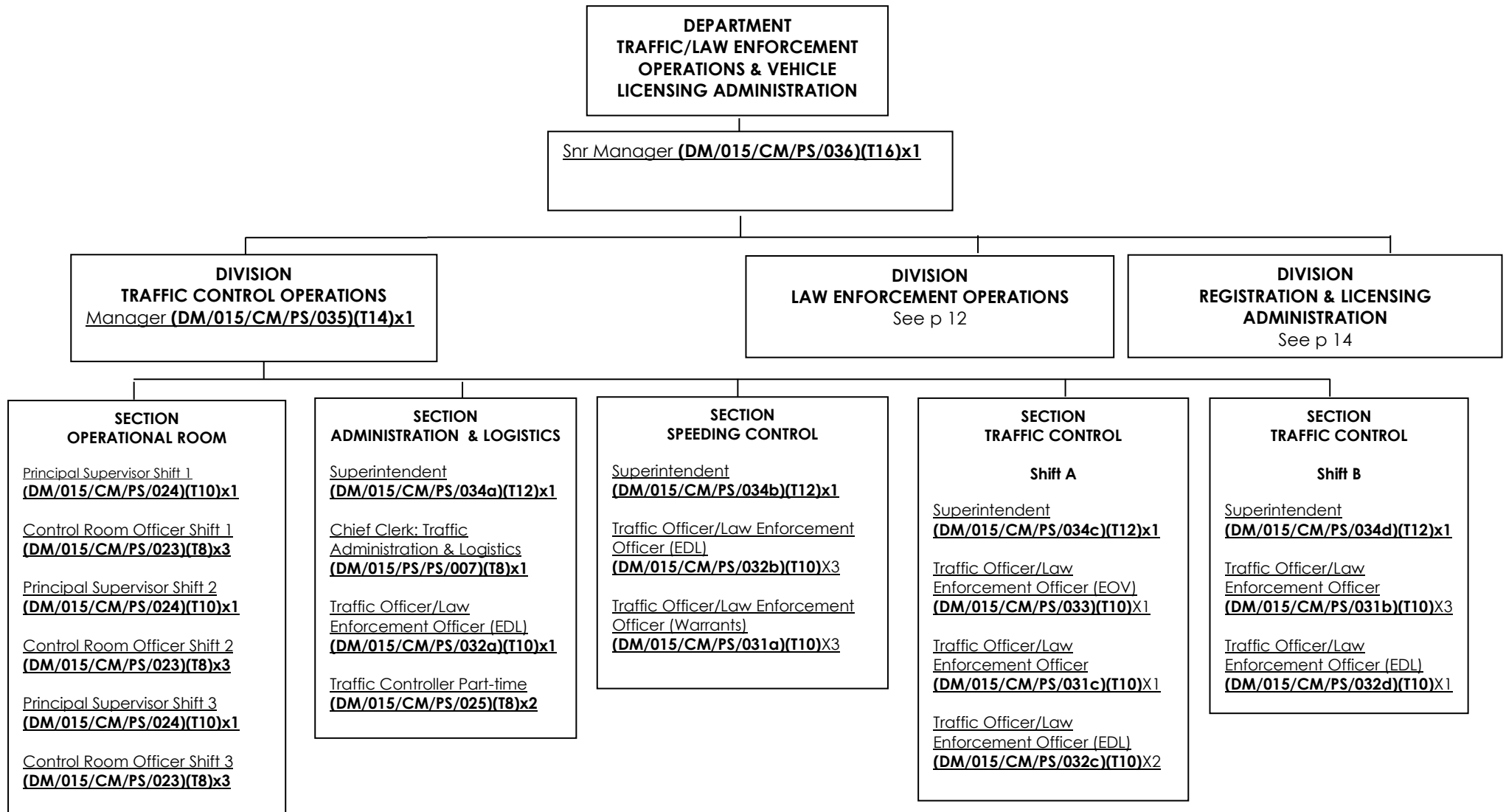
DIRECTORATE FINANCIAL SERVICES



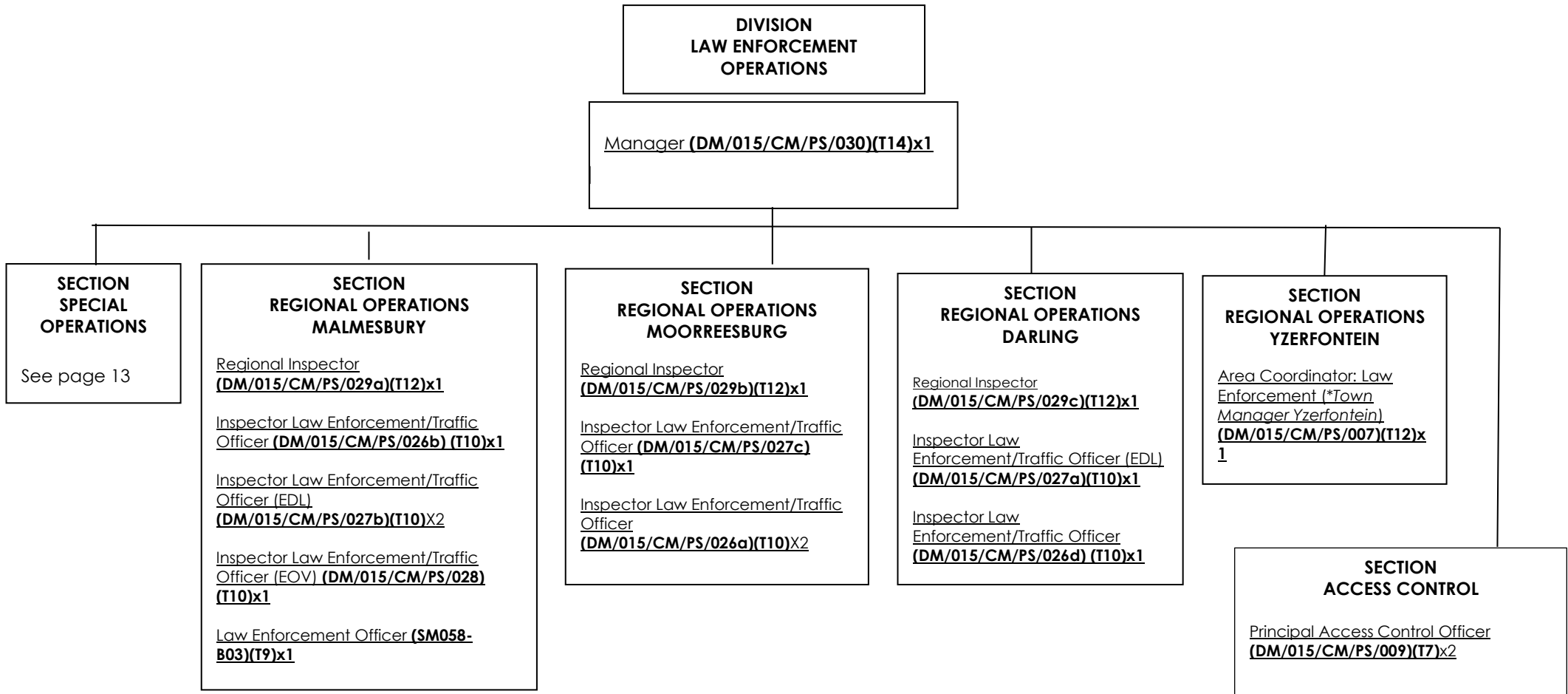
**SWARTLAND MUNICIPALITY
APPROVED ORGANISATIONAL STRUCTURE
DIRECTORATE PROTECTION SERVICES
Approved by Council on 26 January 2023**



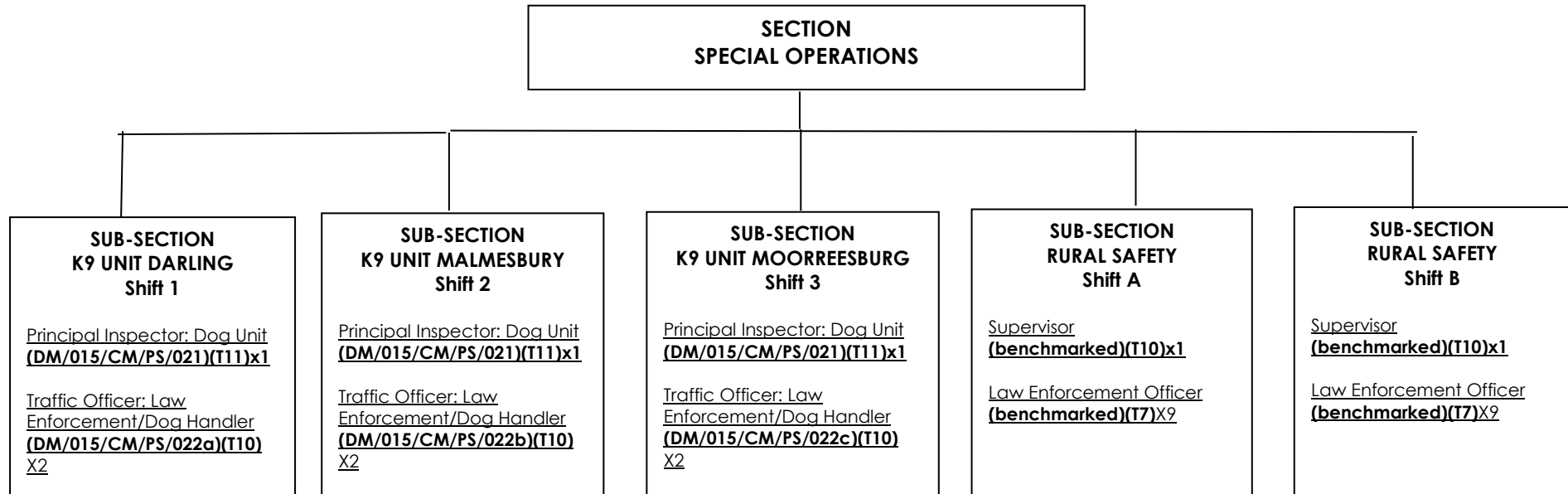
DIRECTORATE PROTECTION SERVICES



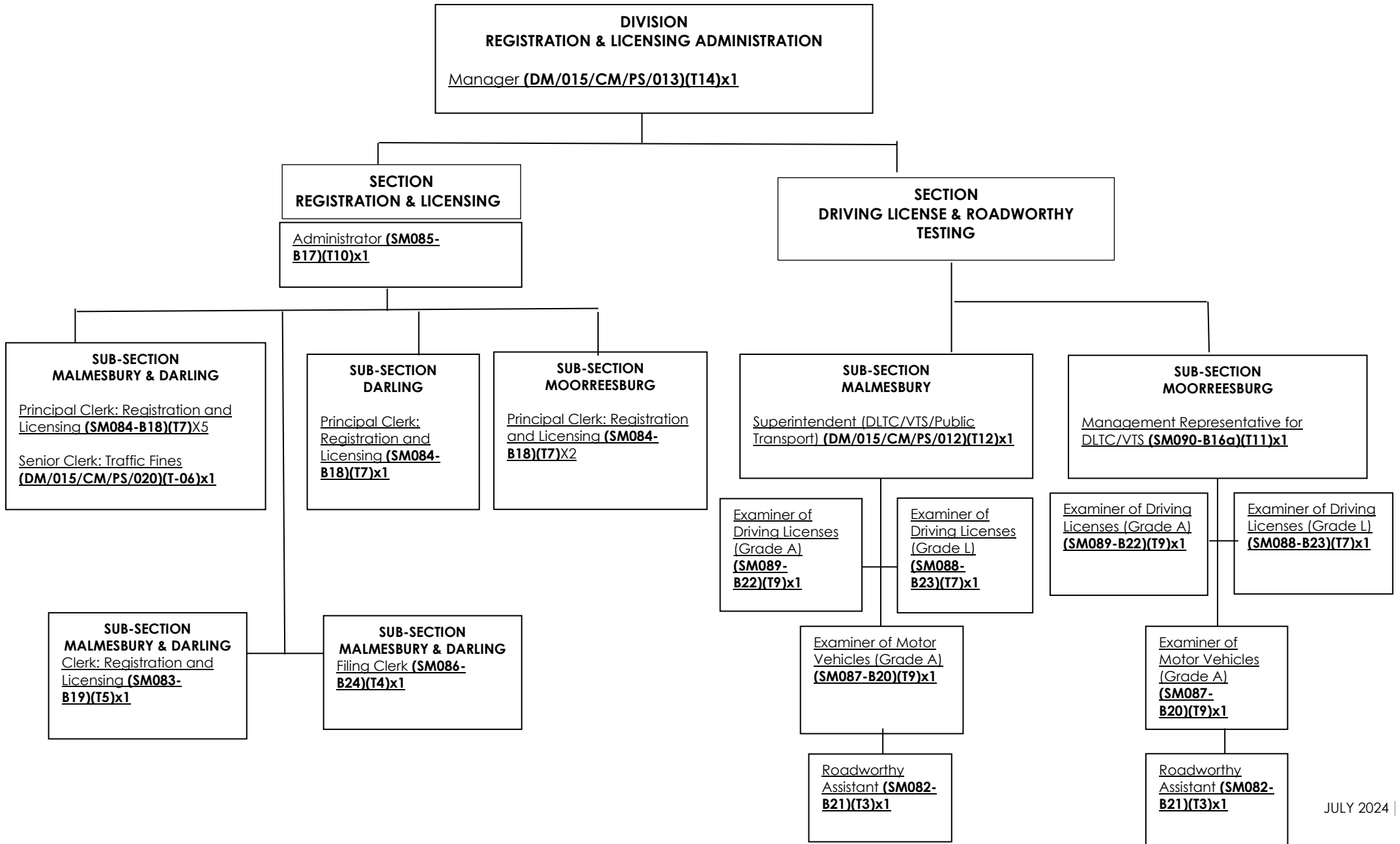
DIRECTORATE PROTECTION SERVICES



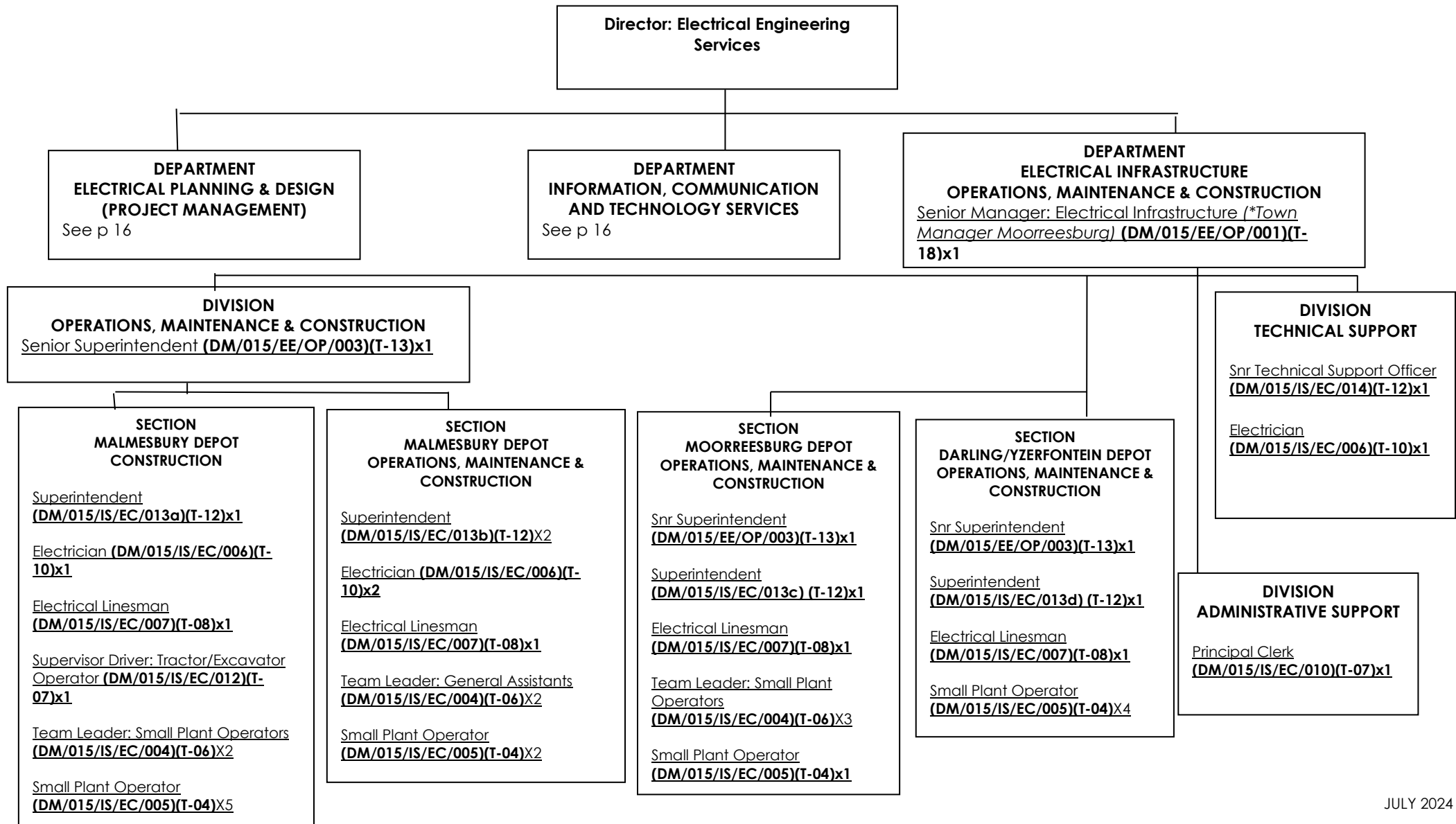
DIRECTORATE PROTECTION SERVICES



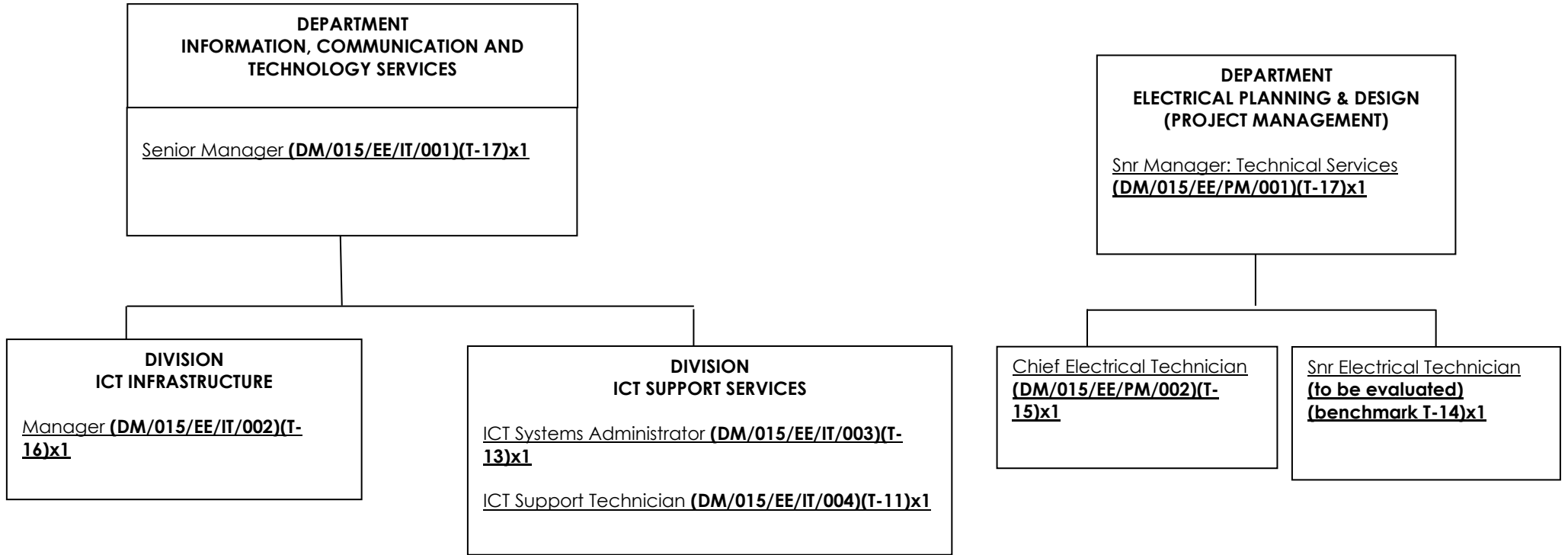
DIRECTORATE PROTECTION SERVICES



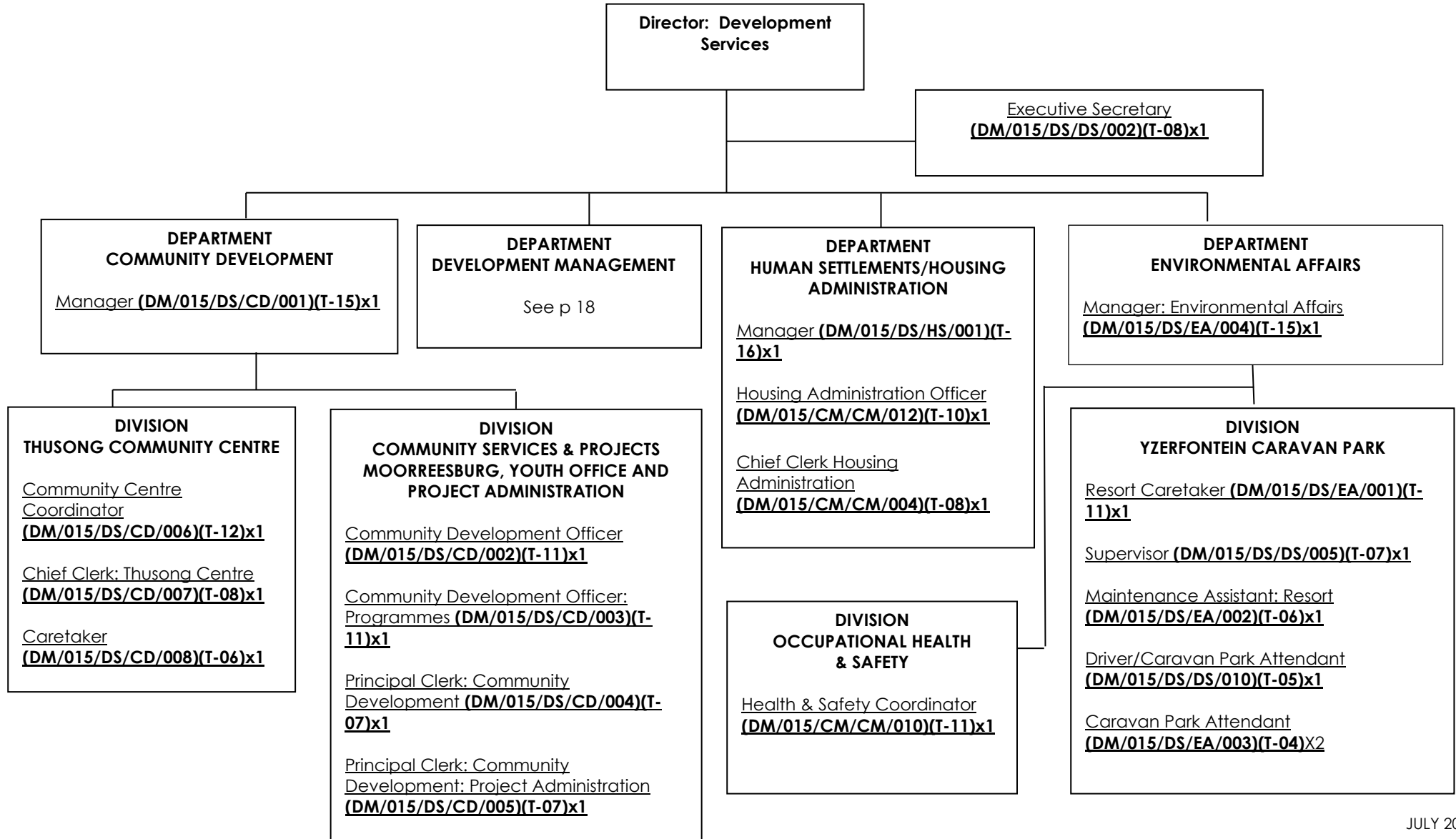
**SWARTLAND MUNICIPALITY
APPROVED ORGANISATIONAL STRUCTURE
DIRECTORATE ELECTRICAL ENGINEERING SERVICES
Approved by Council on 26 January 2023**



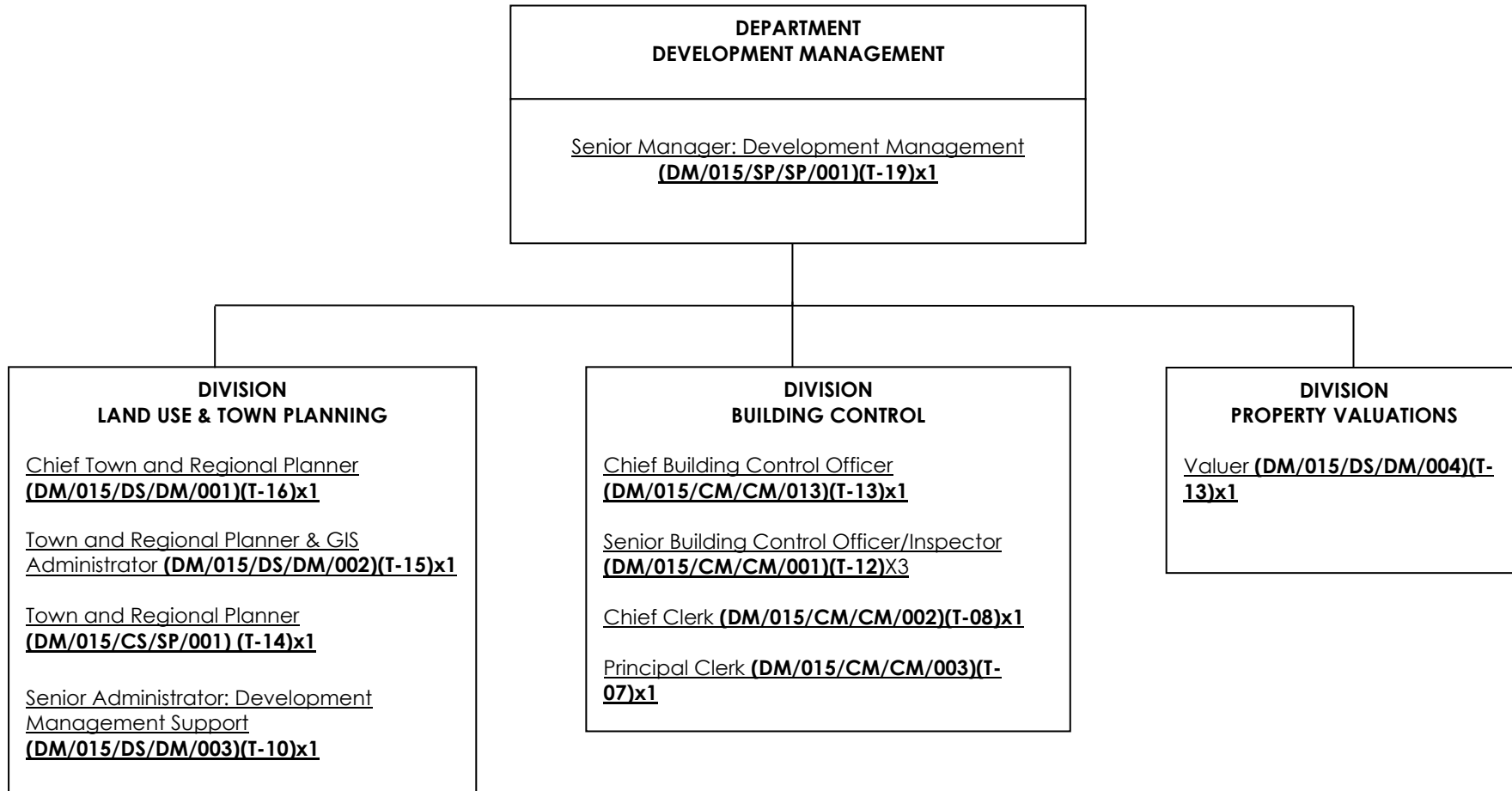
DIRECTORATE ELECTRICAL ENGINEERING SERVICES



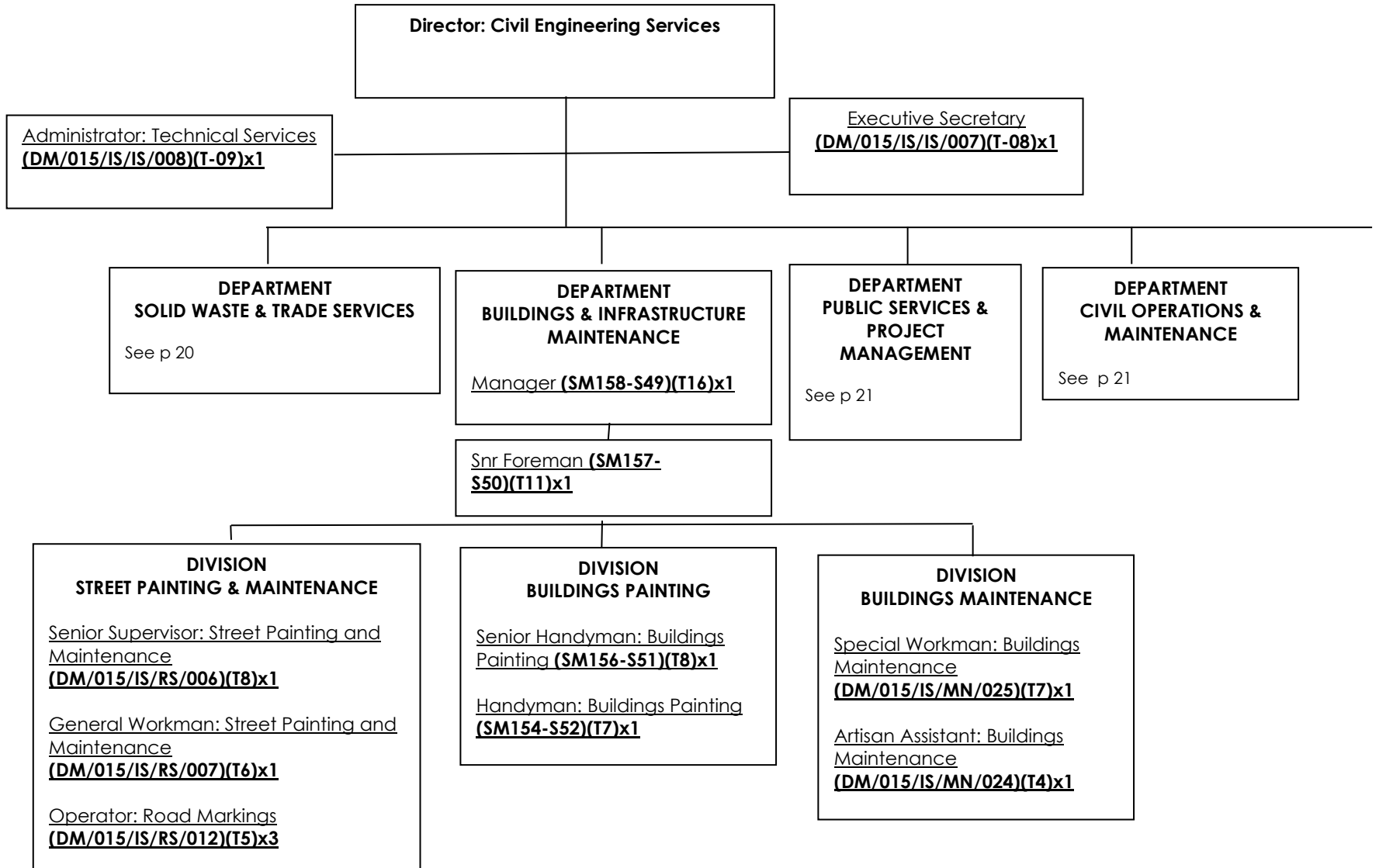
**SWARTLAND MUNICIPALITY
APPROVED ORGANISATIONAL STRUCTURE
DIRECTORATE DEVELOPMENT SERVICES
Approved by Council on 26 January 2023**

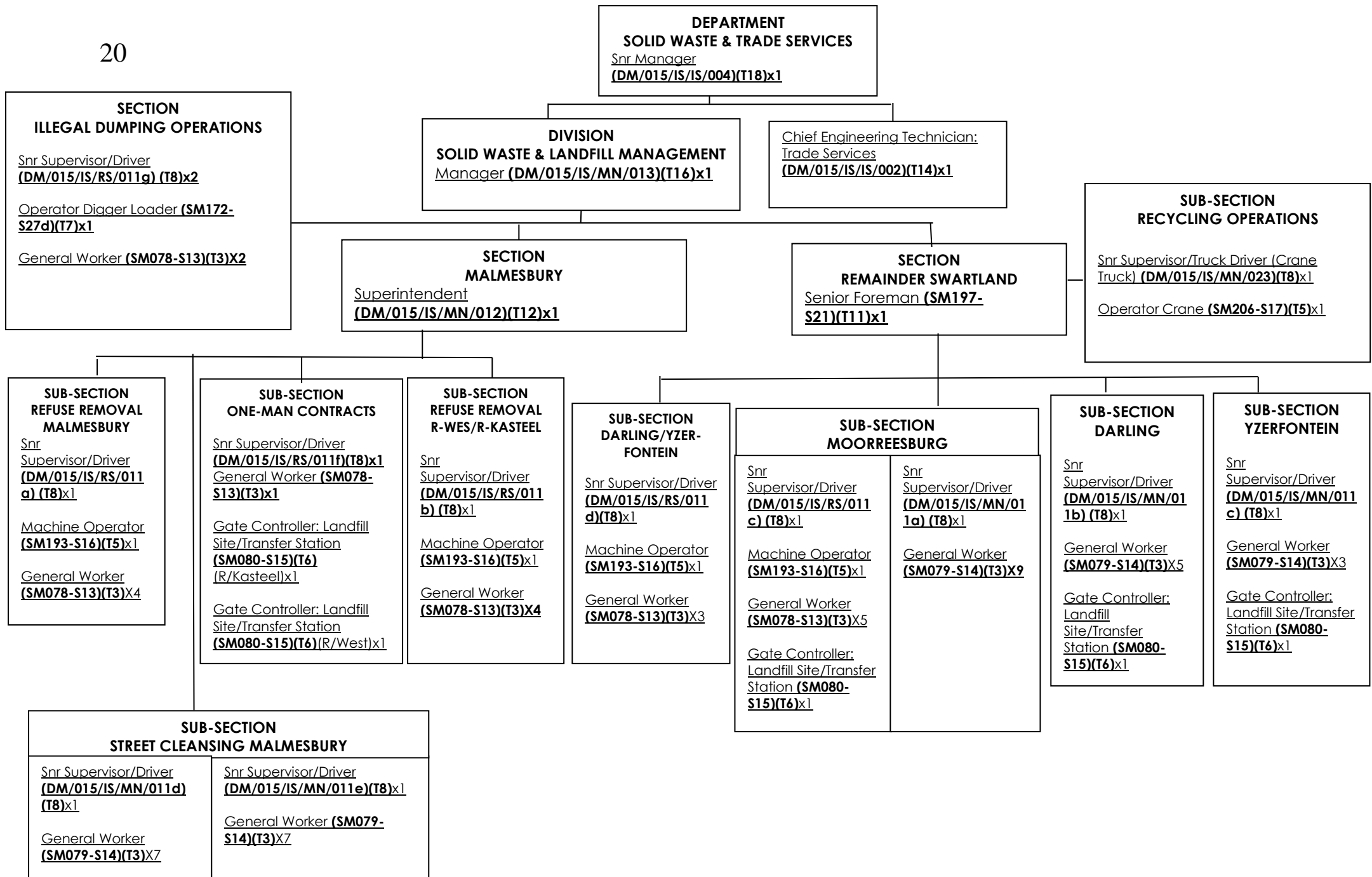


DIRECTORATE DEVELOPMENT SERVICES

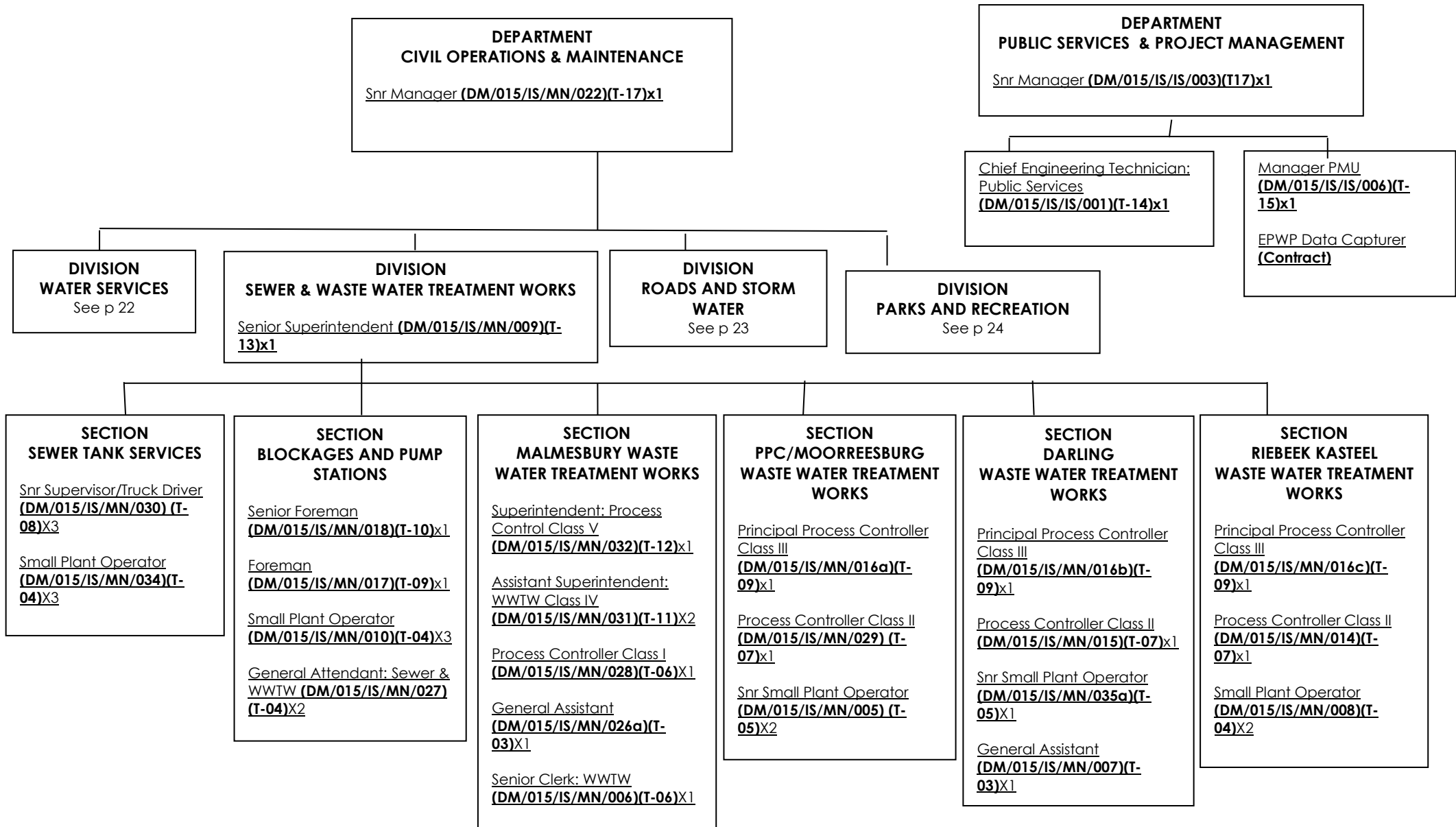


**SWARTLAND MUNICIPALITY
APPROVED ORGANISATIONAL STRUCTURE
DIRECTORATE CIVIL ENGINEERING SERVICES
Approved by Council on 26 January 2023**





DIRECTORATE CIVIL ENGINEERING SERVICES



DIRECTORATE CIVIL ENGINEERING SERVICES

**DEPARTMENT
CIVIL OPERATIONS & MAINTENANCE**

**DIVISION
WATER SERVICES**
*Area Superintendent (SM200-
S42)(T13)x1*

**SECTION
WATER SERVICES MAINTENANCE
MALMESBURY**

**SECTION
WATER SERVICES MAINTENANCE
DARLING**

⁽¹⁾
Snr Supervisor/Truck
Driver (SM192-
S30f)(T8)x1

Small Plant
Operator (SM067-
S03a)(T4)x1

General Assistant
(SM169-S01x)(T3)x1

⁽³⁾
Operator Digger
Loader (SM172-
S27d)(T7)x1

Supervisor/
Storeman (SM170-
S25a)(T7)x1

⁽⁴⁾
Plumber
(DM/015/IS/MN/020)
(T10)x1

Supervisor / Driver
(DM/015/IS/MN/021)
(T7)x1

Small Plant Operator
(SM067-S03p)(T4)x1

Team Leader (Gen
Assts)(SM066-
S02i)(T6)x1

General Assistant
(SM169-S01r)(T3)x1

⁽⁵⁾
Plumber
(DM/015/IS/MN/020)
(T10)x1

Small Plant Operator
(SM067-S03s)(T4)x1

Team Leader (Gen
Assts)(SM066-
S02i)(T6)x1

General Assistant
(SM169-S01a)(T3)x2

⁽⁶⁾
Plumber
(DM/015/IS/MN/020)
(T10)x1

Small Plant Operator
(SM067-S03r)(T4)x1

Team Leader (Gen
Assts)(SM066-
S02k)(T6)x1

General Assistant
(SM169-S01u)(T3)x1

⁽⁷⁾
Plumber
(DM/015/IS/MN/020)
(T10)x1

Small Plant Operator
(SM067-S03t)(T4)x1

General Assistant
(SM169-S01v)(T3)x2

Plumber
(DM/015/IS/MN/020)
(T10)x1

Small Plant Operator
(DM/015/IS/MN/019(b))
(T4)x2

General Assistant (SM169-
S01w)(T3)x1

⁽²⁾
Bricklayer (SM069-
S06d)(T9)x1

General Assistant (SM169-
S01t)(T3)x2

**SECTION
WATER SERVICES MAINTENANCE
MOORREESBURG**

Plumber (DM/015/IS/MN/020) (T10)x1

Team Leader (Gen Assts)(SM066-
S02f)(T6)x1

Small Plant Operator
(DM/015/IS/MN/019a) (T4)x1

General Assistant (SM169-S01s)(T3)x2

DIRECTORATE CIVIL ENGINEERING SERVICES

**DEPARTMENT
CIVIL OPERATIONS & MAINTENANCE**

**DIVISION
ROADS AND STORM WATER**
Senior Superintendent (DM/015/IS/RS/029)(T-13)x1

Supervisor/Storeman
(DM/015/IS/RS/027)(T-07)x1

SECTION DARLING
Asst Superintendent (DM/015/IS/RS/005a)(T-11)x1

Artisan/Bricklayer (DM/015/IS/RS/003c)(T-09)x1

Operator: Grader Final Layer and Digger Loader (DM/015/IS/RS/022)(T-09)x1

Snr Supervisor/Truck Driver (DM/015/IS/RS/024c)(T-08)x2
Senior Truck Driver: Digger Operator (DM/015/IS/RS/021)(T-07)x1

Supervisor/Storeman (DM/015/IS/RS/026)(T-07)x1

Senior Operator: Roller (DM/015/IS/RS/017b)(T-06)x1

Small Plant Operator (DM/015/IS/RS/010b)(T-04)x1

Small Plant Operator (DM/015/IS/RS/013e)(T-04)x1

General Assistant (DM/015/IS/RS/008g)(T-03)x3

SECTION CONSTRUCTION & MAINTENANCE Team A
Asst Superintendent (DM/015/IS/RS/005b)(T-11)x1

Artisan/Bricklayer (DM/015/IS/RS/003a)(T-09)x1

Snr Supervisor/Truck Driver (DM/015/IS/RS/024b)(T-08)x1

Senior Operator: Roller (DM/015/IS/RS/017a)(T-06)x1

Operator: Mechanical Plant (DM/015/IS/RS/016)(T-05)x1

Small Plant Operator (DM/015/IS/RS/030)(T-04)x1

Small Plant Operator (DM/015/IS/RS/013b)(T-04)x1

Gen Asst/Store Attendant (DM/015/IS/RS/009)(T-04)x1

General Assistant (DM/015/IS/RS/008h)(T-03)x3

SUB-SECTION MAINTENANCE: SIDEWALKS & STORM WATER RIEBEKE

Snr Supervisor/Truck Driver (DM/015/IS/RS/024a)(T-08)x1

Senior Operator: Mechanical Plant (DM/015/IS/RS/018)(T-06)x1

Small Plant Operator (DM/015/IS/RS/010a)(T-04)x6

SUB-SECTION CONSTRUCTION & MAINTENANCE: GRADING

Operator: Grader Final Layer and Digger Loader (DM/015/IS/RS/023)(T-09)x1

General Assistant (DM/015/IS/RS/008b)(T-03)x1

SECTION CONSTRUCTION & MAINTENANCE Team B

Asst Superintendent (DM/015/IS/RS/005c)(T-11)x1

Artisan/Bricklayer (DM/015/IS/RS/003b)(T-09)x1

Snr Supervisor/Truck Driver (DM/015/IS/RS/024c)(T-08)x1

Senior Truck Driver: Loader Operator (DM/015/IS/RS/019)(T-07)x1

Small Plant Operator (DM/015/IS/RS/014b)(T-04)x2

Small Plant Operator (DM/015/IS/RS/013)(T-04)x1

General Assistant (DM/015/IS/RS/008d)(T-03)x4

SECTION MAINTENANCE: PATCHWORK

Foreman (DM/015/IS/RS/004)(T-09)x1

Senior Operator: Roller (DM/015/IS/RS/017d)(T-06)x1

Small Plant Operator (DM/015/IS/RS/014c)(T-04)x1

Small Plant Operator (DM/015/IS/RS/013c)(T-04)x1

General Assistant (DM/015/IS/RS/008e)(T-03)x3

SUB-SECTION MAINTENANCE: SIDEWALKS & STORM WATER MALMESBURY

Snr Supervisor/Truck Driver (DM/015/IS/RS/024d)(T-08)x1

Small Plant Operator (DM/015/IS/RS/014a)(T-04)x1

General Assistant (DM/015/IS/RS/008c)(T-03)x2

SECTION MOORREESBURG

Asst Superintendent (DM/015/IS/RS/005d)(T-11)x1

Artisan/Bricklayer (DM/015/IS/RS/003d)(T-09)x1

Snr Supervisor/Truck Driver (DM/015/IS/RS/025)(T-08)x1

Operator Grader (Final Layer) (SM173-S28b)(T9)x1

Snr Truck Driver: Digger Operator (DM/015/IS/RS 020)(T-07)x1

Senior Operator: Roller (DM/015/IS/RS/017c)(T-06)x1

Small Plant Operator (DM/015/IS/RS/015)(T-04)x1

Small Plant Operator (DM/015/IS/RS/013d)(T-04)x1

General Assistant (DM/015/IS/RS/008f)(T-03)x4

SUB-SECTION MAINTENANCE: SIDEWALKS & STORM WATER YZERFONTEIN

Snr Supervisor/Truck Driver (DM/015/IS/RS/028)(T-08)x1

Small Plant Operator (DM/015/IS/RS/010c)(T-04)x1

General Assistant (DM/015/IS/RS/008a)(T-03)x1

DIRECTORATE CIVIL ENGINEERING SERVICES

**DEPARTMENT
CIVIL OPERATIONS & MAINTENANCE**

**DIVISION
PARKS AND RECREATION**

Area Superintendent (SM162-S44)(T13)x1

Supervisor/Storeman
(DM/015/IS/PC/004)(T7)x1

Senior Coordinator: Sports
(DM/015/IS/PC/018) (T11)x1

**SECTION
PARKS & FACILITIES MOORREESBURG**

Senior Foreman
(DM/015/IS/PC/017c)(T10)x1

Supervisor/ Truck Driver
(DM/015/IS/PC/015)(T8)x1

Supervisor/Tractor Driver (SM191-S29b)(T7)x2

Caretaker Sports Fields (Gene Louw)(SM137-S36b)(T7)x1

Caretaker Sports Fields (Rosenhof)(SM137-S36a)(T7)x1

Handyman (DM/015/IS/PC/012)(T5)x4

Handyman (DM/015/IS/PC/011)(T5)x1

Handyman (Koringberg)(DM/015/IS/PC/013)(T5)x1

General Assistant (SM169-S01o)(T3)x6

SUB-SECTION SWIMMING POOL

Lifeguard/Caretaker (SM068-S05b)(T9)x1

**SECTION
PARKS, OPEN AREAS, CEMETERIES & SPORTS FIELDS MALMESBURY**

Senior Foreman (DM/015/IS/PC/017a)(T10)x1

Supervisor/Tractor Driver (SM191-S29a)(T7)x4

Snr Team Leader (Gen Assts) (DM/015/IS/PC/008)(T6)x1

Handyman (DM/015/IS/PC/005a)(T5)x5

General Assistant (SM169-S01i)(T3)x7

SUB-SECTION SPORTS FIELDS

Caretaker Sports Fields (Wesbank)(SM137-S36c)(T7)x1

Caretaker Sports Fields (Chatsw)(SM137-S36d)(T7)x1

Groundsman (DM/015/IS/PC/014)(T6)x1

**SUB-SECTION
PARKS, OPEN AREAS, CEMETERIES & SPORTS FIELD
RIEBEEK-WEST/ RIEBEEK- KASTEEL**

Supervisor/Tractor Driver (DM/015/IS/PC/010)(T7)x1

Handyman (DM/015/IS/PC/009)x2

SUB-SECTION SWIMMING POOL MALMESBURY

Lifeguard/Caretaker (SM068-S05c)(T9)x2

Handyman: Swimming Pool (DM/015/IS/PC/006)(T5)x1

SUB-SECTION SWIMMING POOL WEST BANK

Lifeguard/Caretaker (SM068-S05c)(T9)x2

Handyman: Swimming Pool (DM/015/IS/PC/006)(T5)x1

**SUB-SECTION
GENERAL MAINTENANCE & GARDENING MALMESBURY**

Foreman/Truck Driver (DM/015/IS/PC/016)(T8)x1

General Assistant (SM169-S01y)(T3)x3

**SECTION
PARKS AND FACILITIES DARLING**

Senior Foreman (DM/015/IS/PC/017b)(T10)x1

Supervisor/Tractor Driver (SM191-S29c)(T7)x1

Snr Caretaker: Sports Fields (DM/015/IS/PC/007)(T7)x1

Handyman (DM/015/IS/PC/005c)(T5)x4

General Assistant (SM169-S01m)(T3)x3

General Assistant (Yzerfontein) (SM169-S01n)(T3)x1

SUB-SECTION SWIMMING POOL

Lifeguard/Caretaker (SM068-S05a)(T9)x1