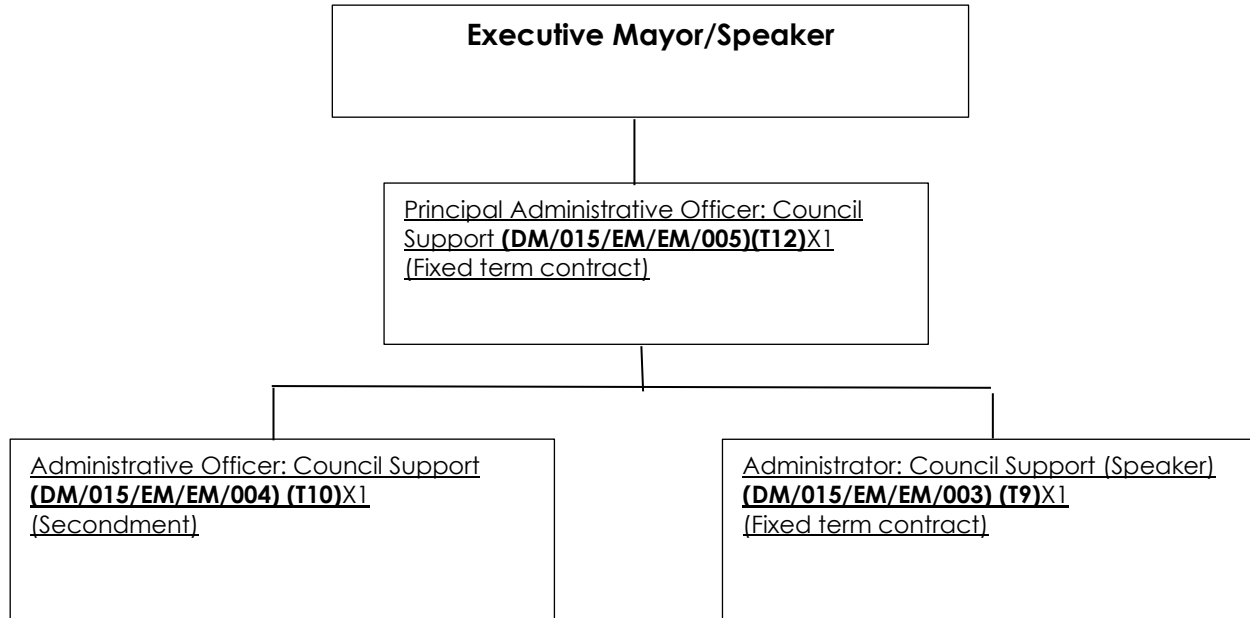
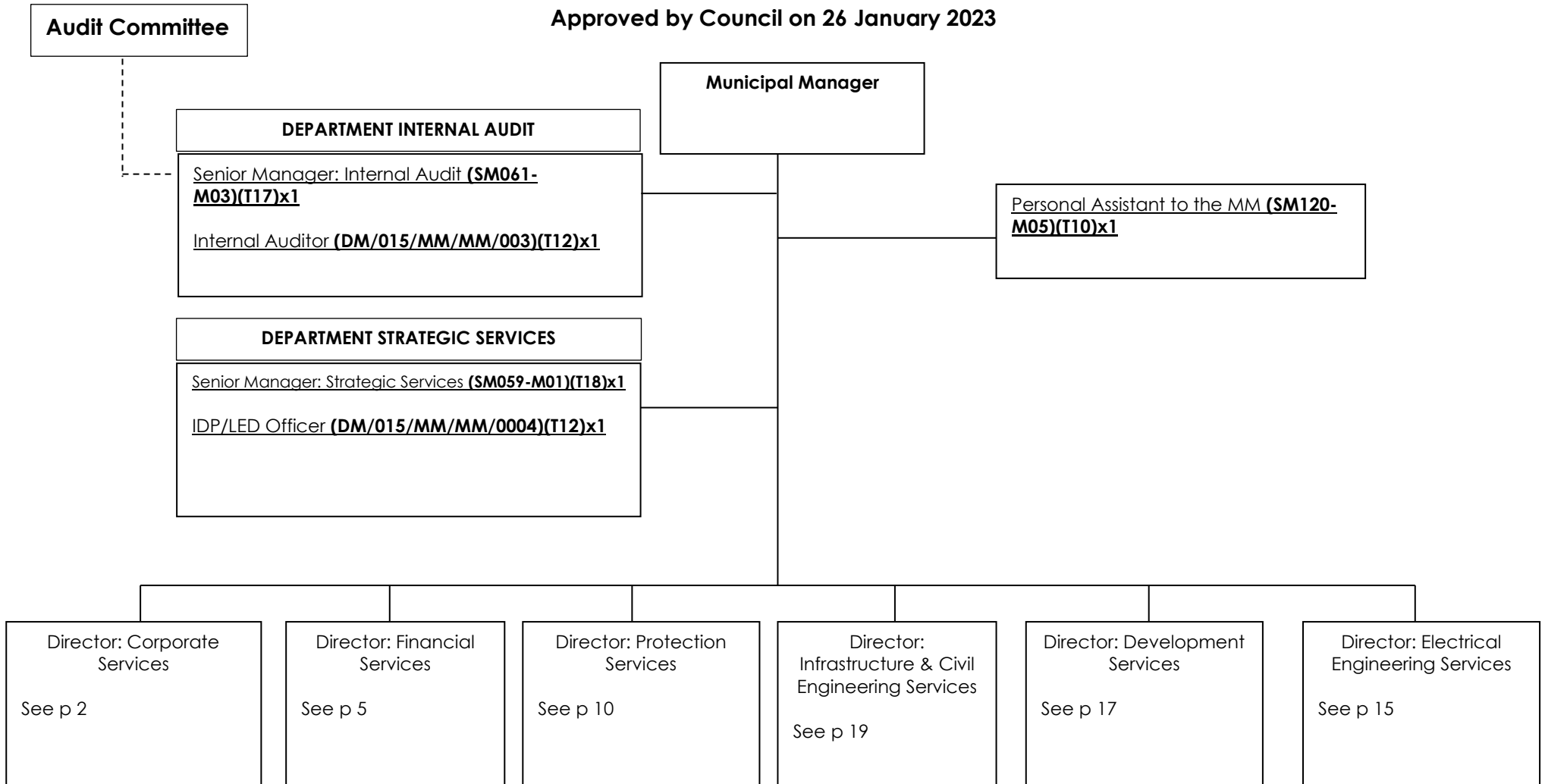


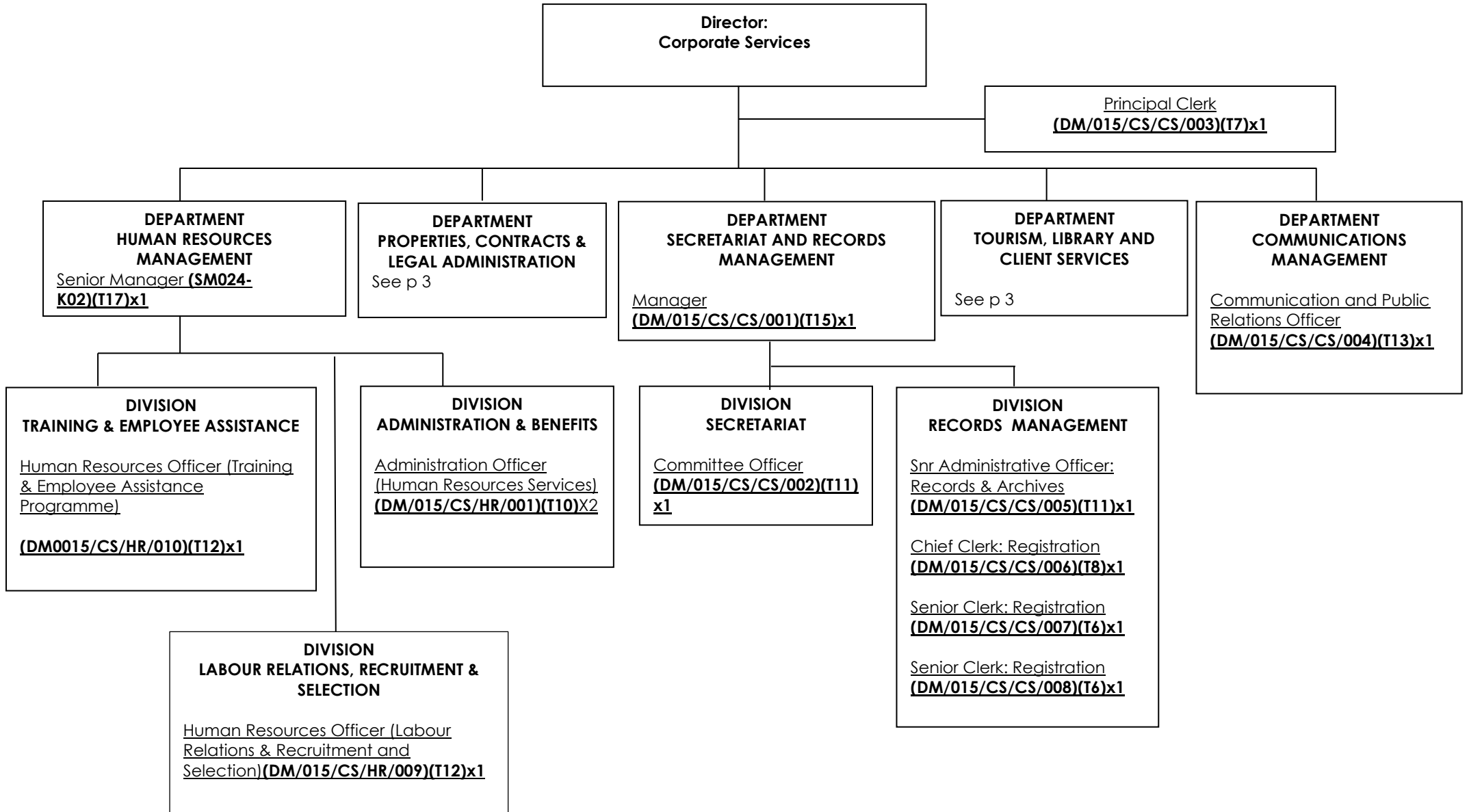
**SWARTLAND MUNICIPALITY
PROPOSED ORGANISATIONAL STRUCTURE
OFFICE OF THE POLITICAL OFFICE BEARERS
Approved by Council on 26 January 2023**



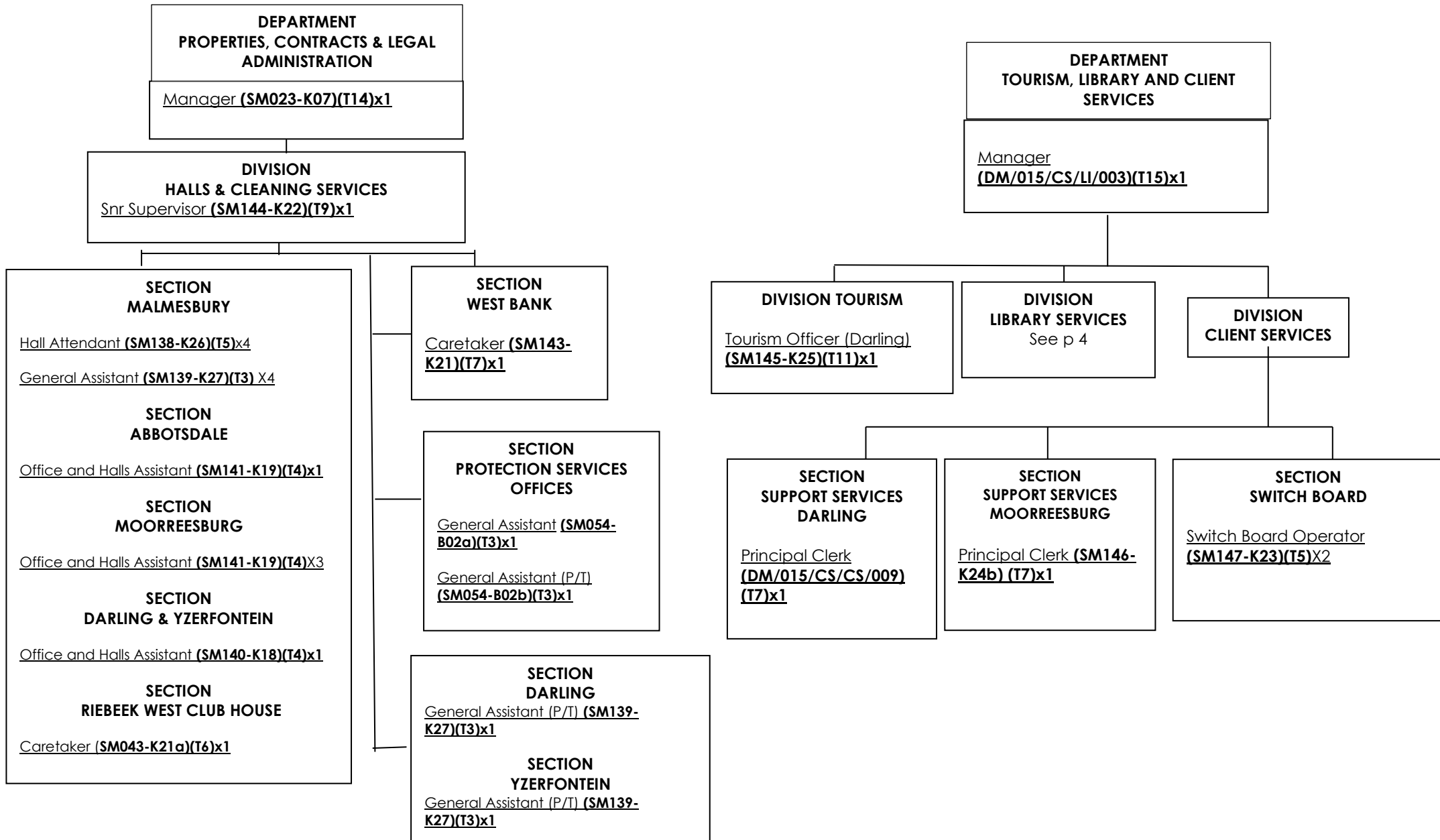
**SWARTLAND MUNICIPALITY
PROPOSED ORGANISATIONAL STRUCTURE
OFFICE OF THE MUNICIPAL MANAGER
Approved by Council on 26 January 2023**



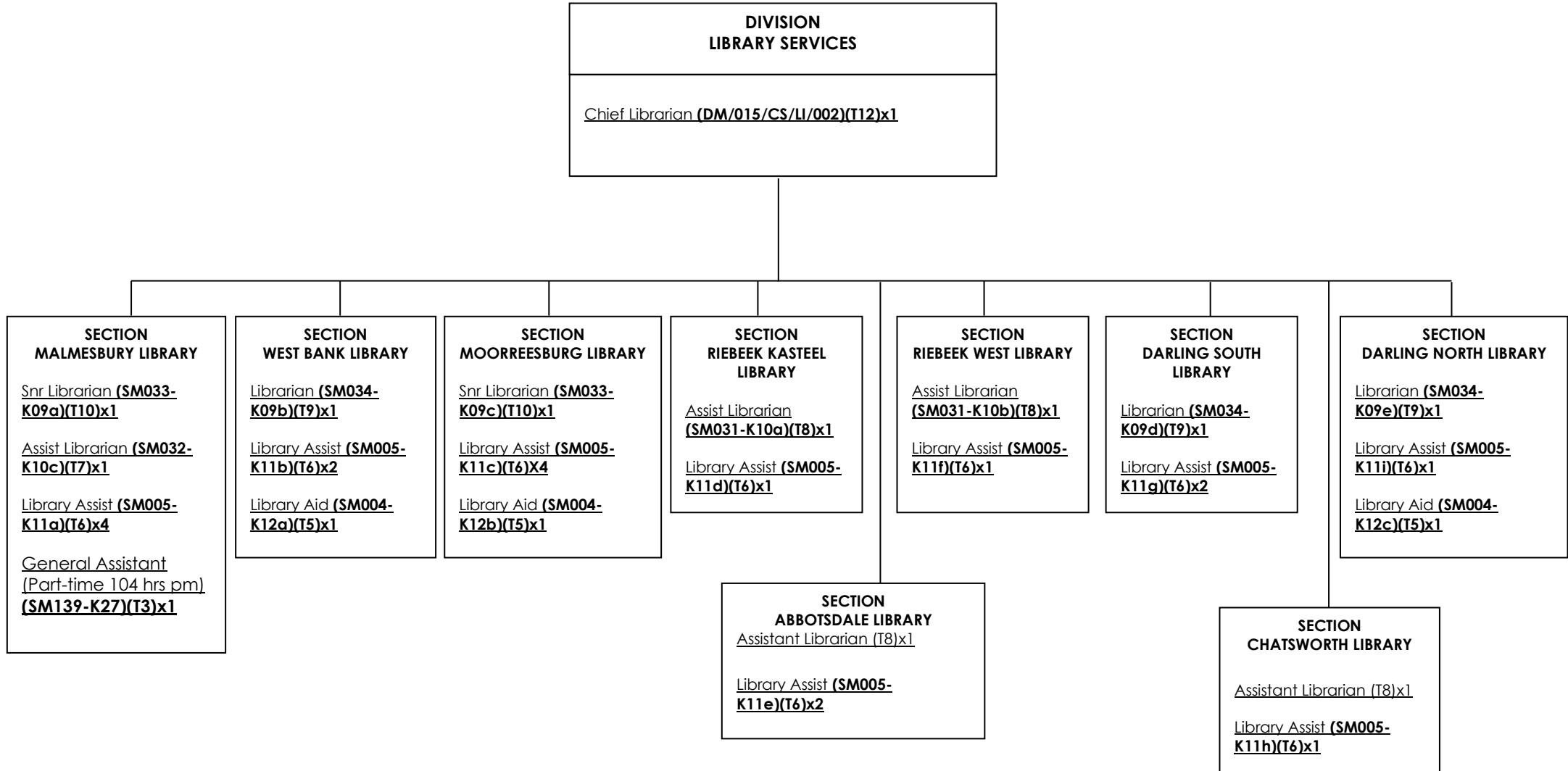
**SWARTLAND MUNICIPALITY
PROPOSED ORGANISATIONAL STRUCTURE
DIRECTORATE CORPORATE SERVICES
Approved by Council on 26 January 2023**



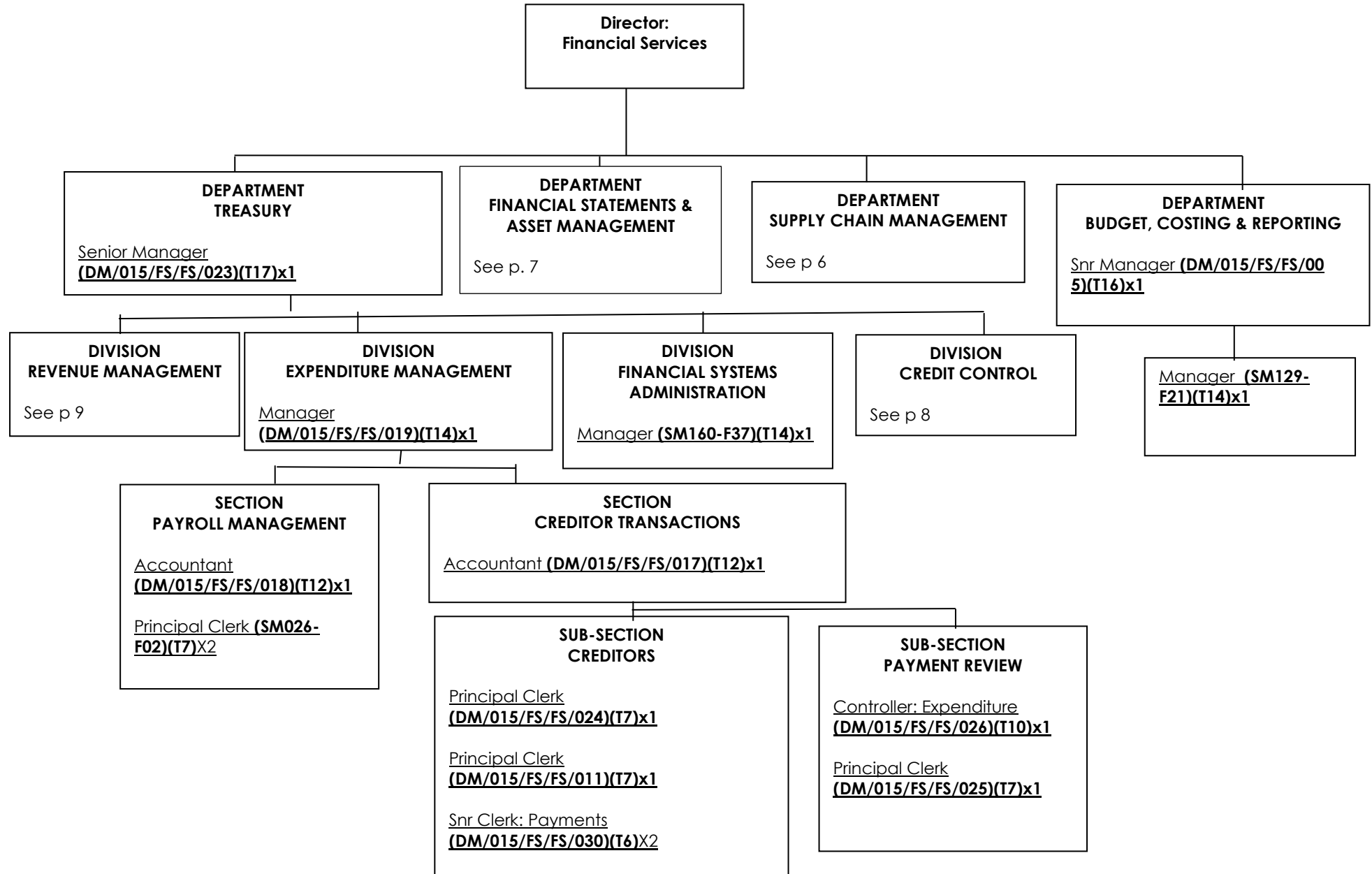
DIRECTORATE CORPORATE SERVICES



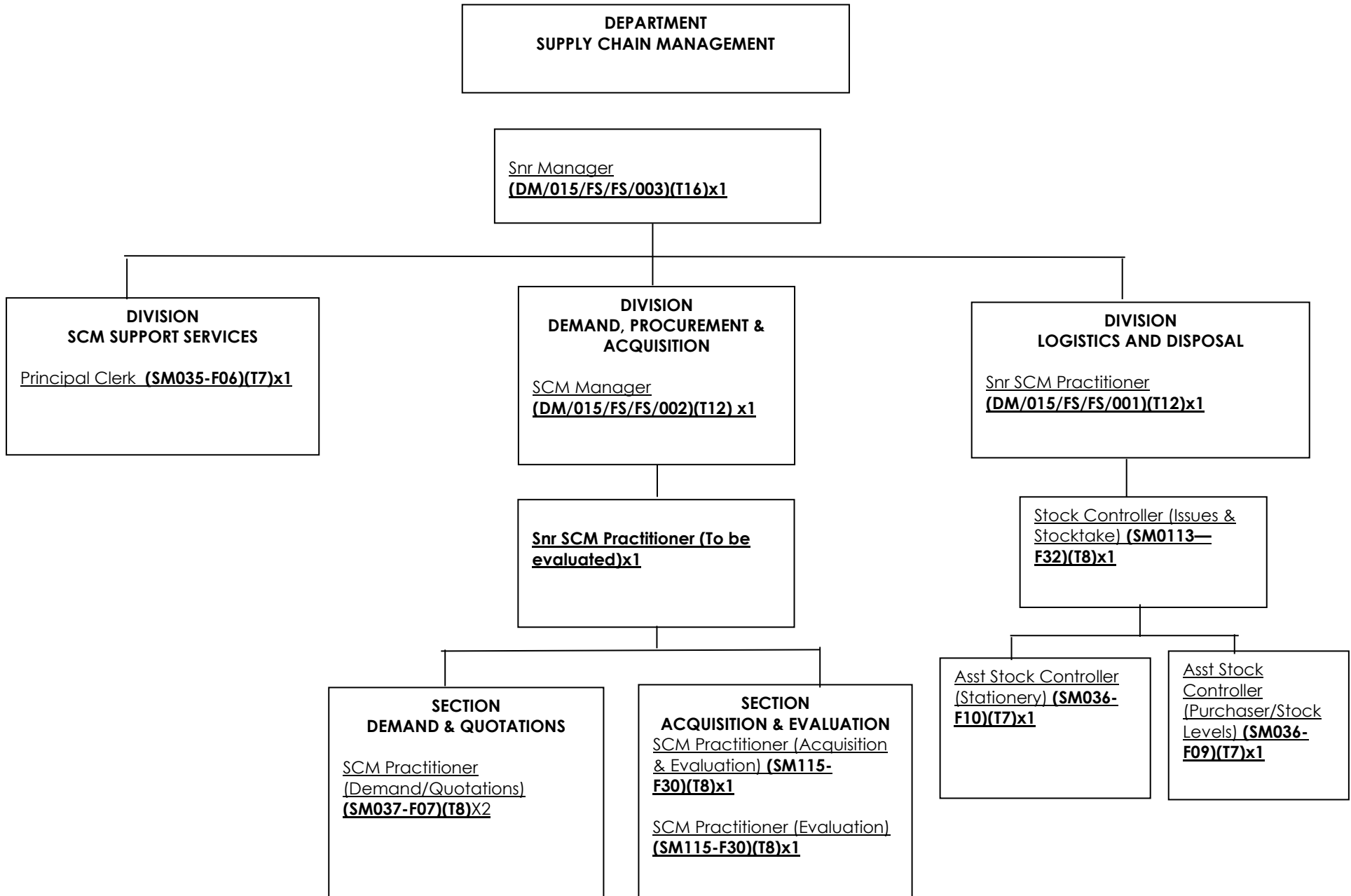
DIRECTORATE CORPORATE SERVICES

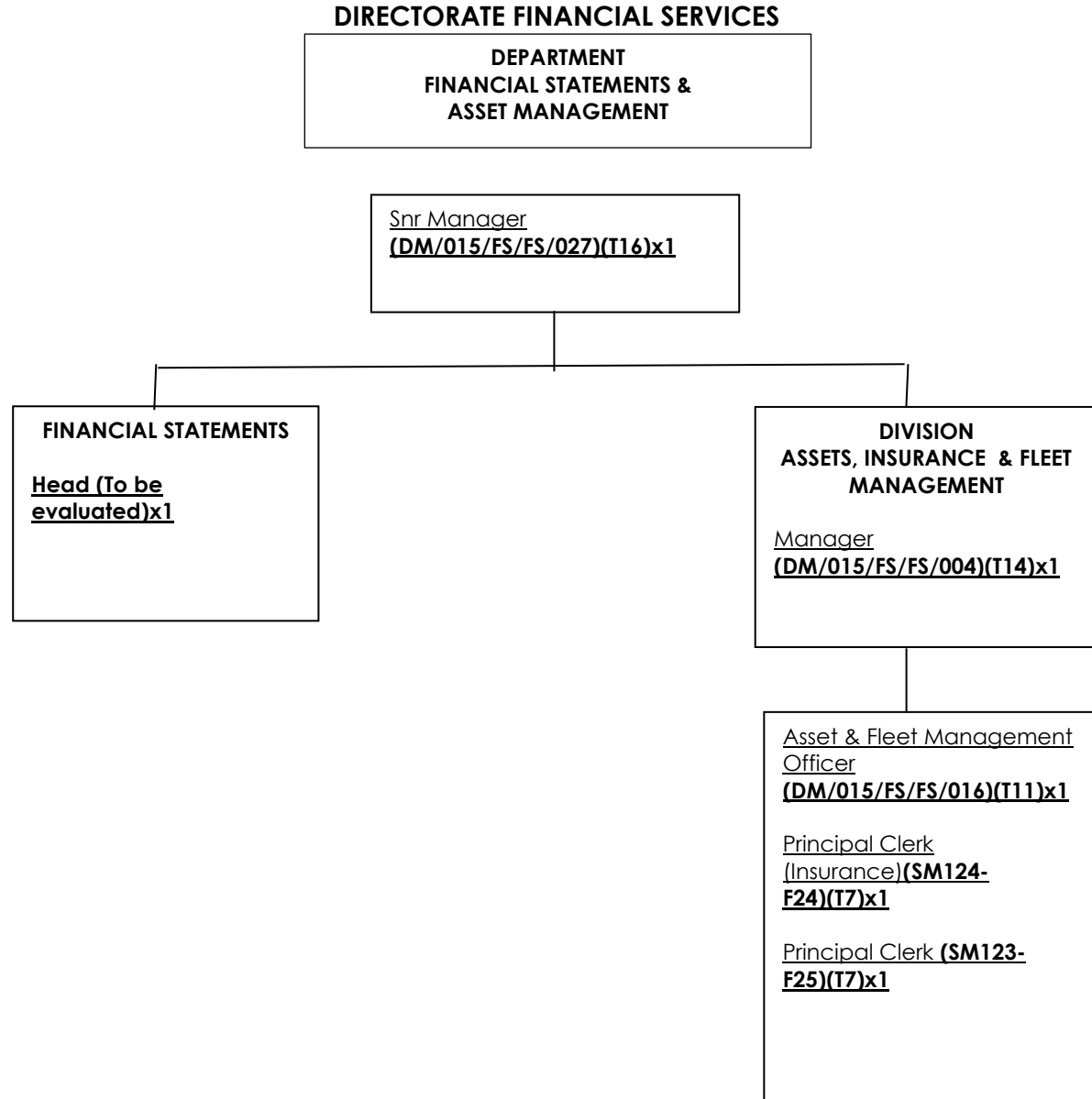


**SWARTLAND MUNICIPALITY
PROPOSED ORGANISATIONAL STRUCTURE
DIRECTORATE FINANCIAL SERVICES
Approved by Council on 26 January 2023**

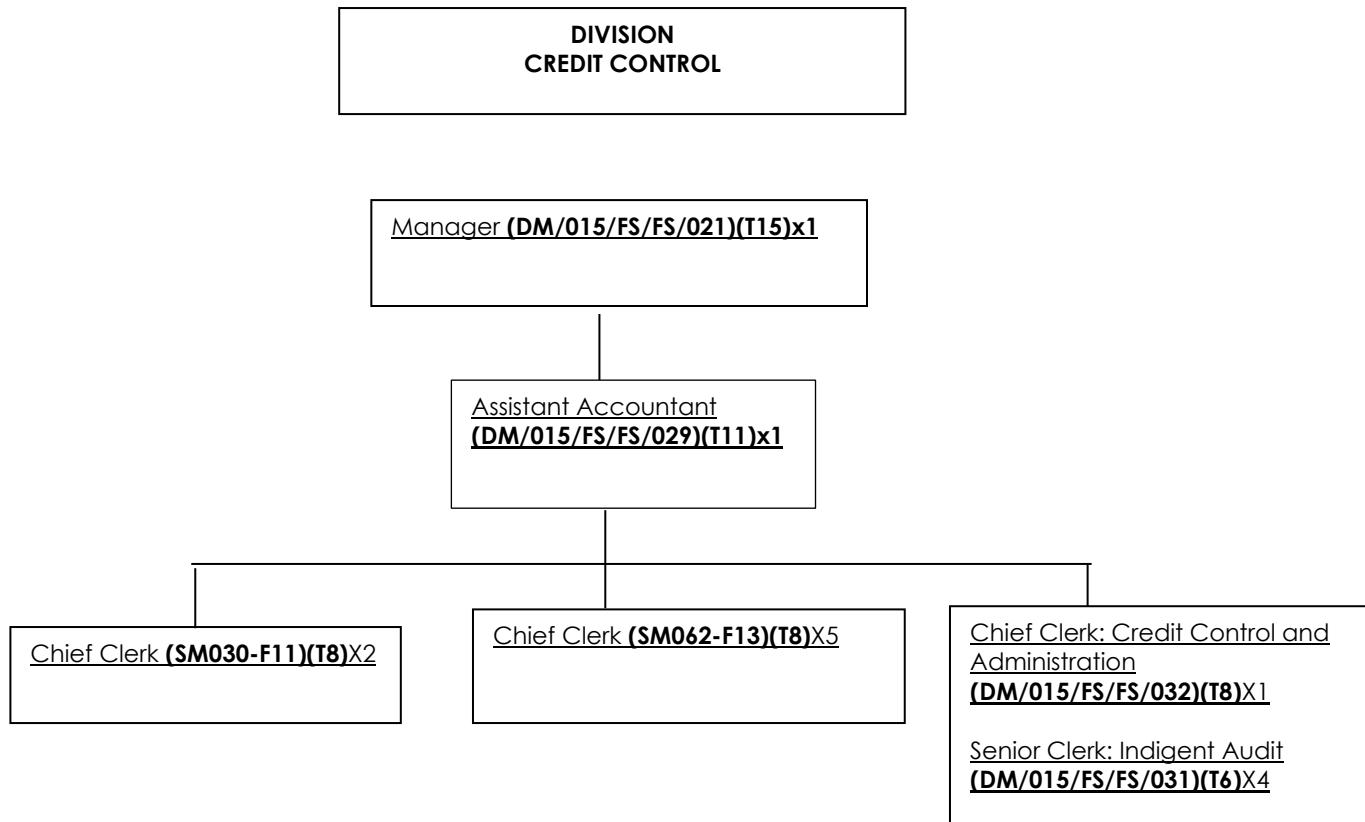


DIRECTORATE FINANCIAL SERVICES

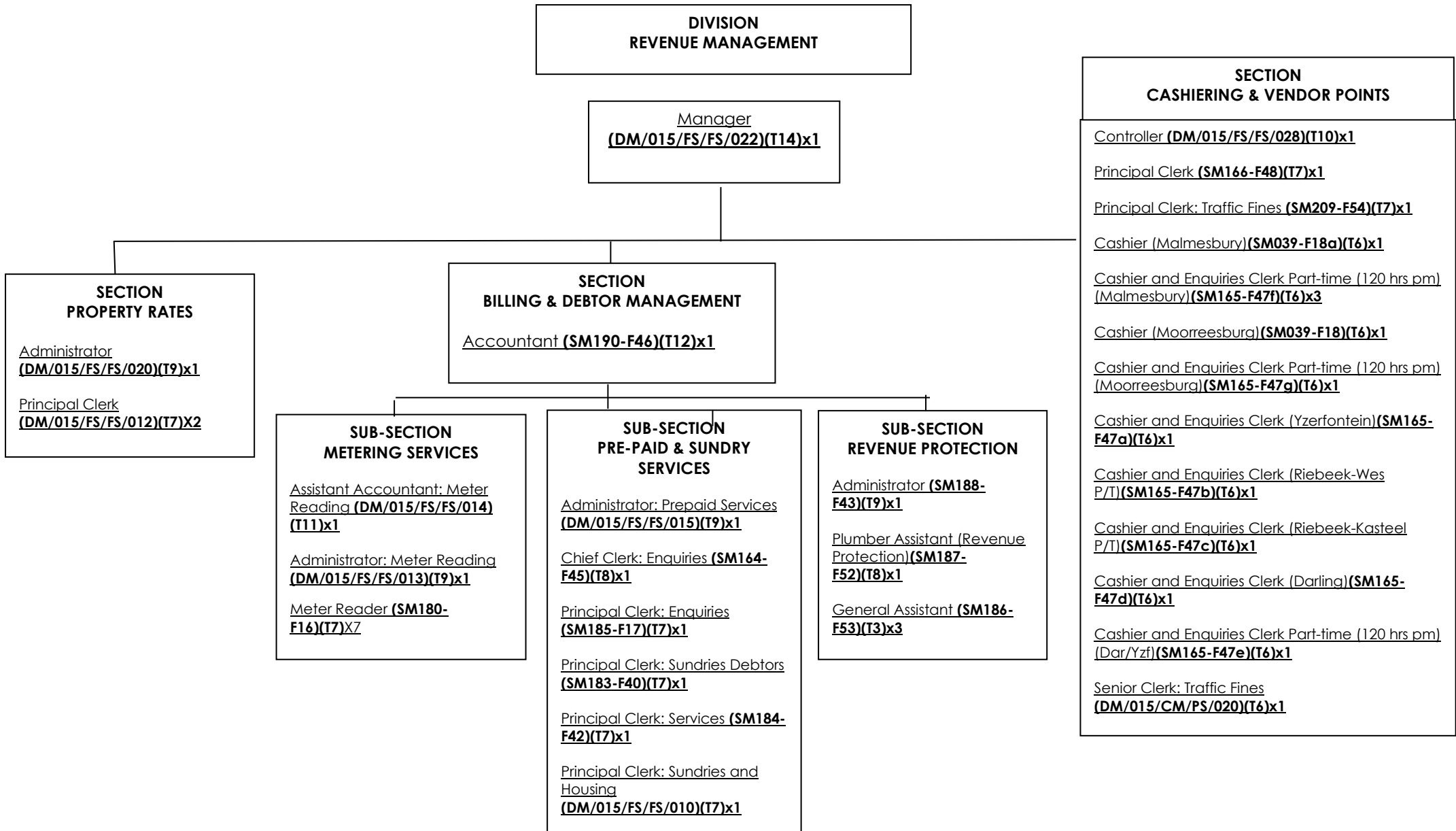




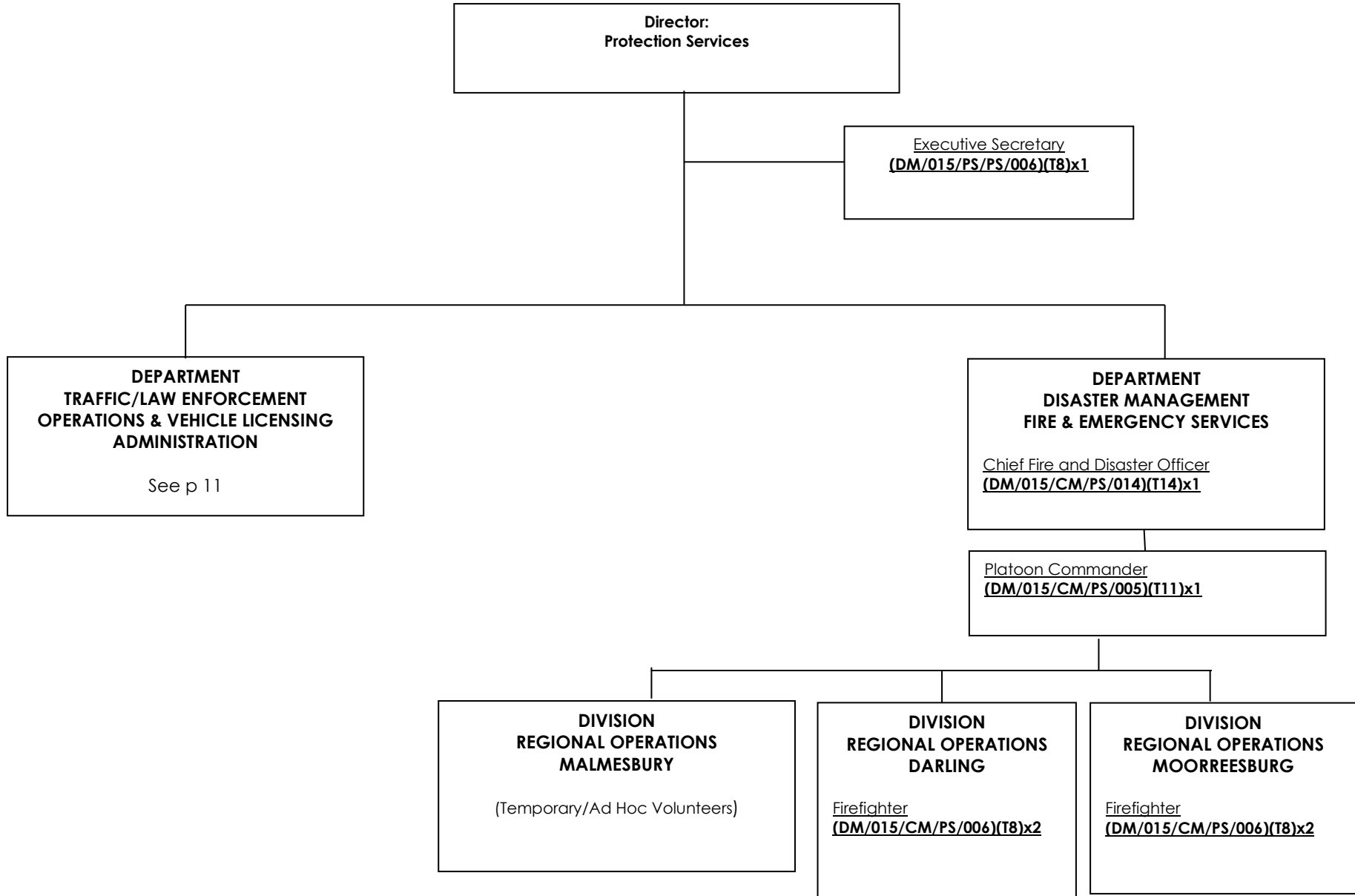
DIRECTORATE FINANCIAL SERVICES



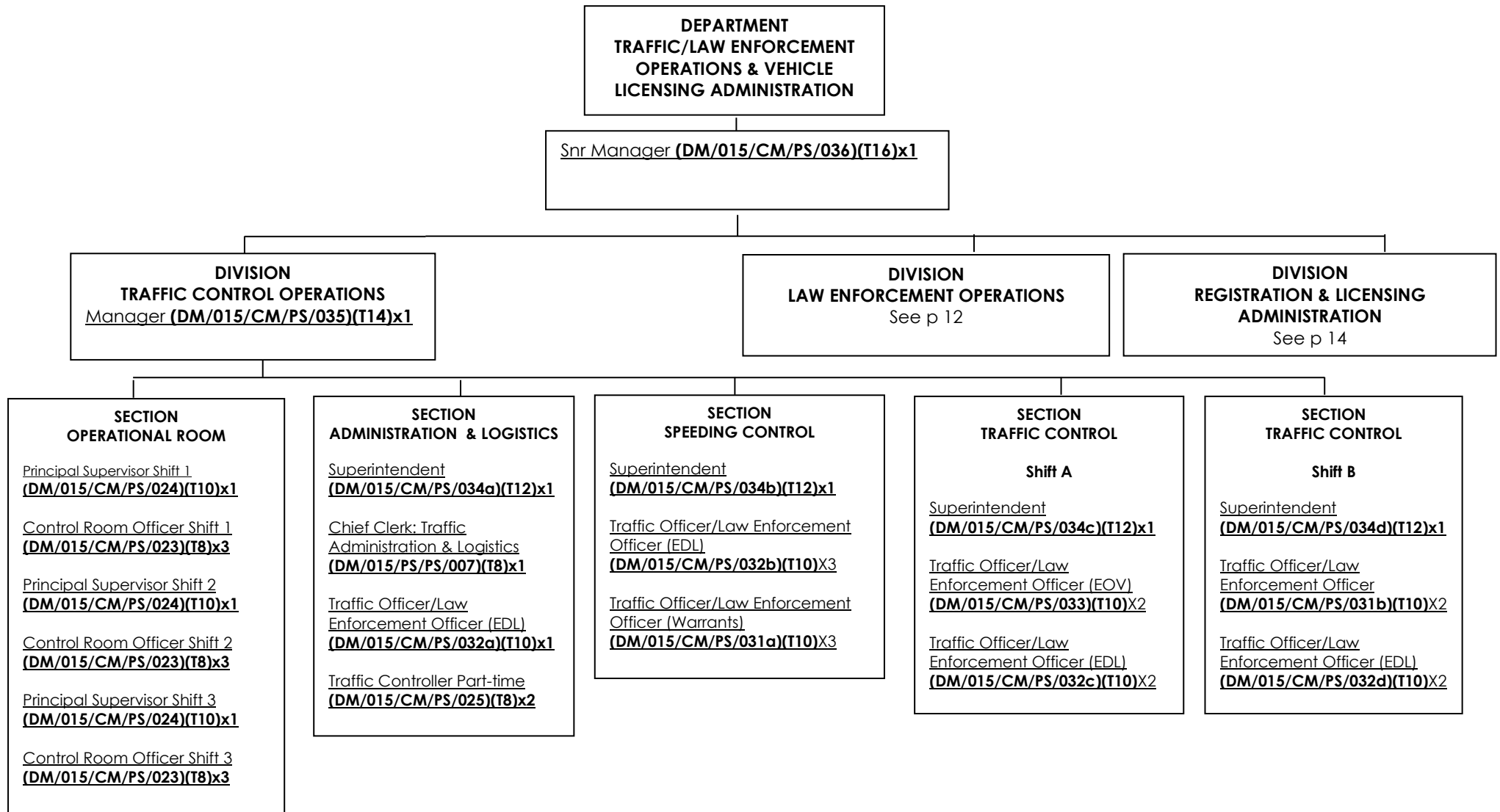
DIRECTORATE FINANCIAL SERVICES



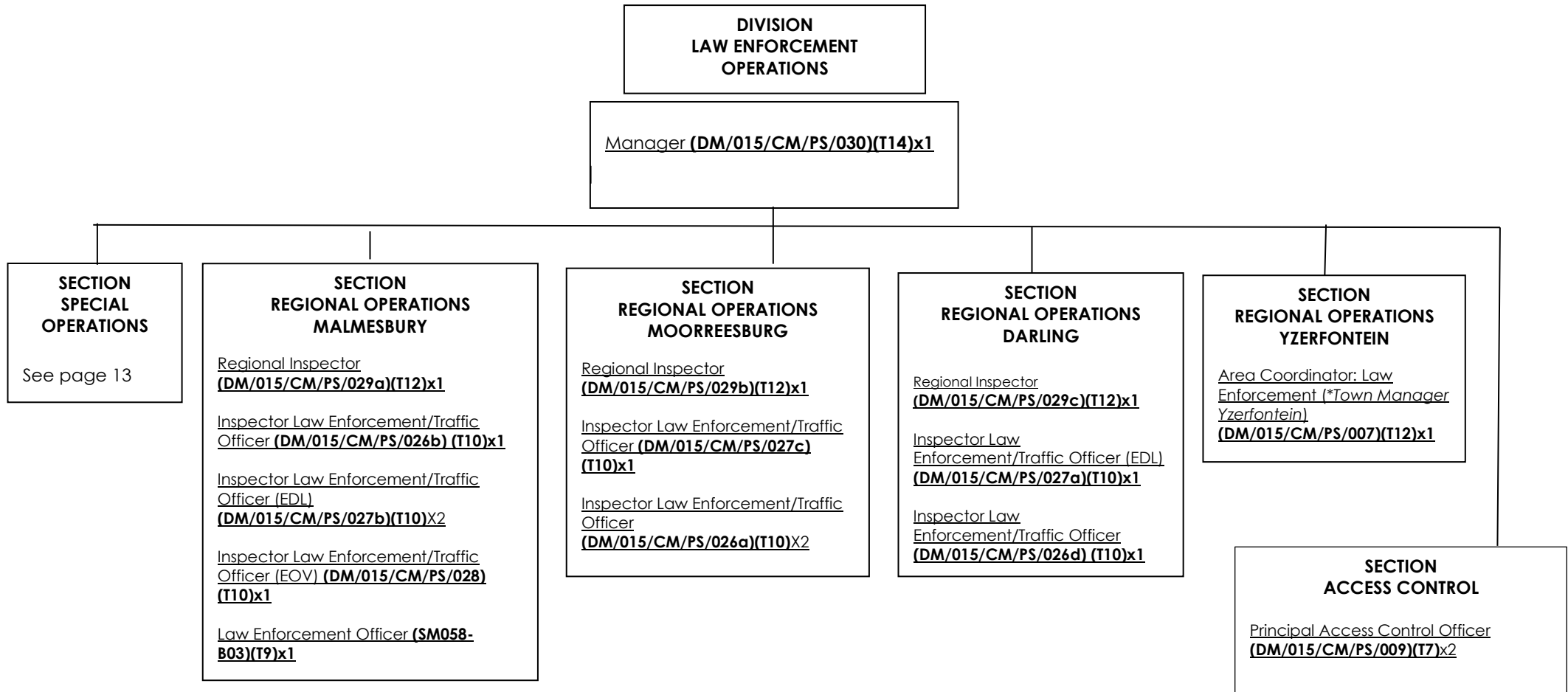
**SWARTLAND MUNICIPALITY
PROPOSED ORGANISATIONAL STRUCTURE
DIRECTORATE PROTECTION SERVICES
Approved by Council on 26 January 2023**



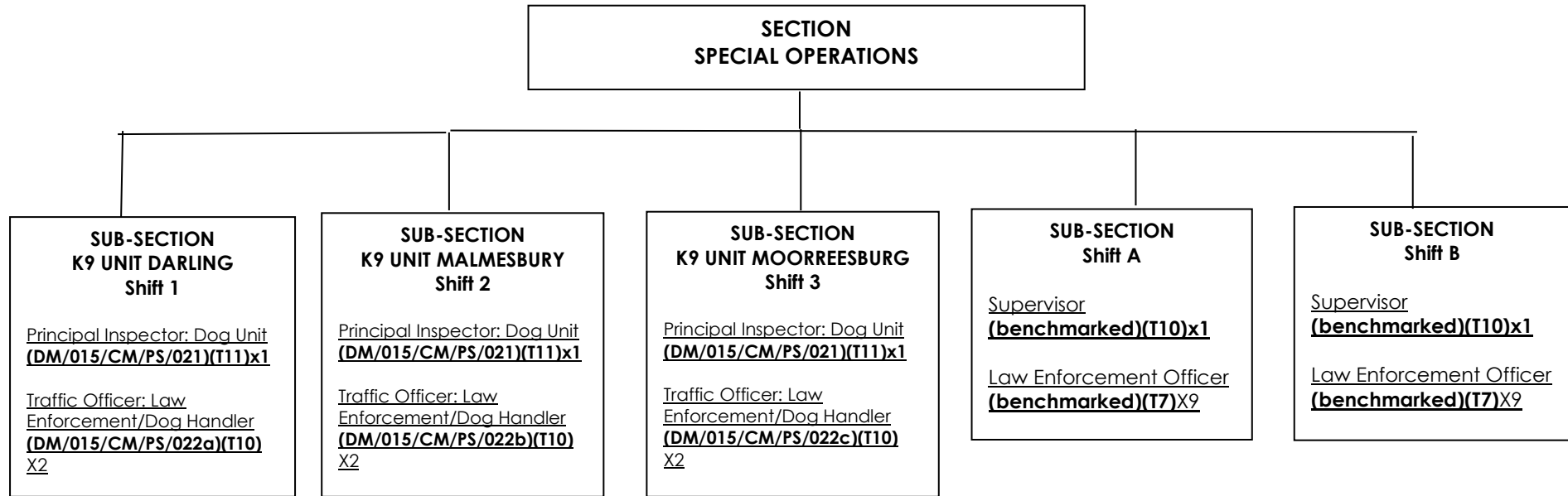
DIRECTORATE PROTECTION SERVICES



DIRECTORATE PROTECTION SERVICES



DIRECTORATE PROTECTION SERVICES



DIRECTORATE PROTECTION SERVICES

**DIVISION
REGISTRATION & LICENSING ADMINISTRATION**
Manager (DM/015/CM/PS/013)(T14)x1

**SECTION
REGISTRATION & LICENSING**
Administrator (SM085-B17)(T10)x1

**SECTION
DRIVING LICENSE & ROADWORTHY
TESTING**

**SUB-SECTION
MALMESBURY & DARLING**
Principal Clerk: Registration and Licensing (SM084-B18)(T7)x5
Clerk: Registration and Licensing (SM083-B19)(T5)x1
Filing Clerk (SM086-B24)(T4)x1

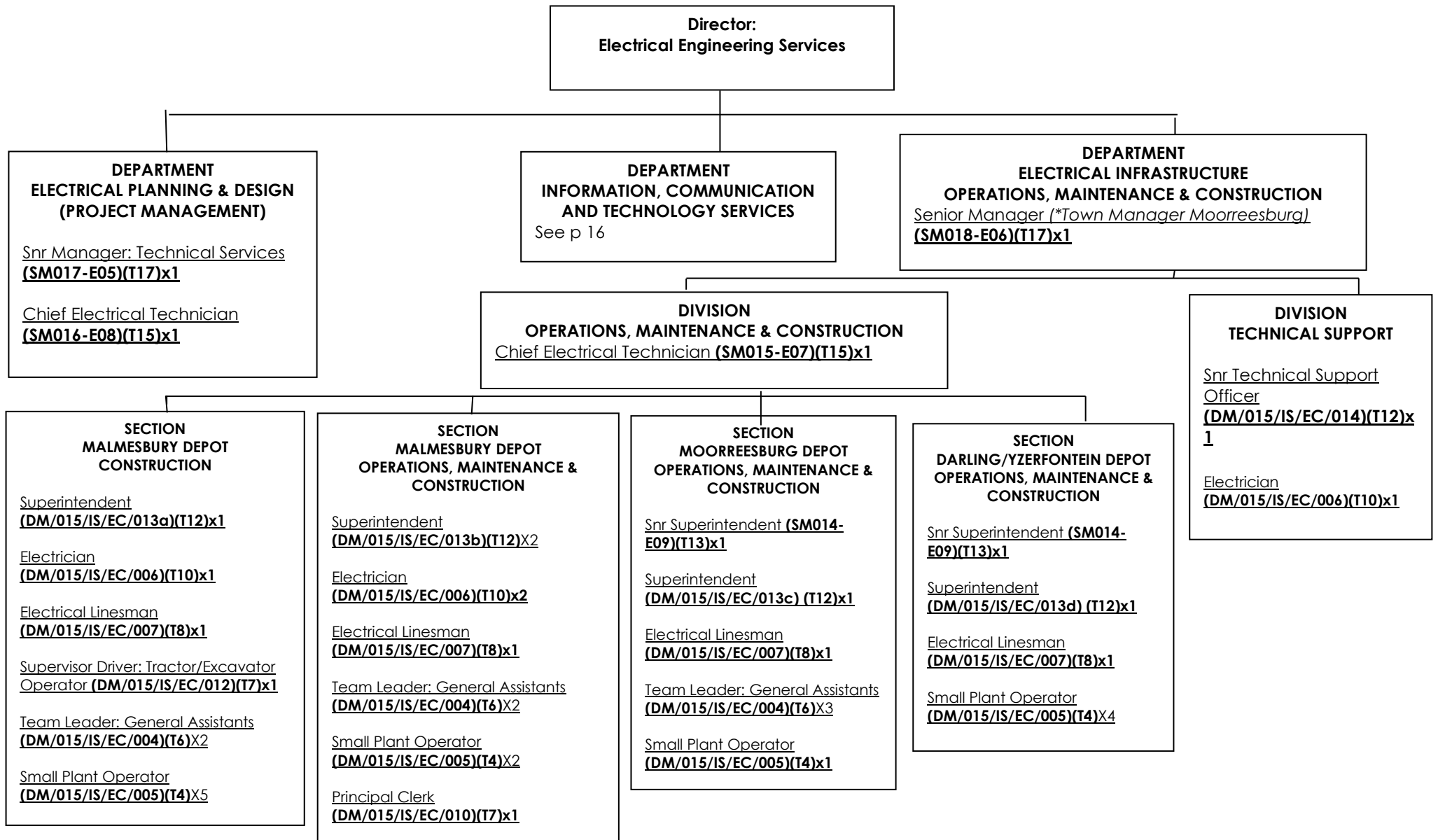
**SUB-SECTION
DARLING**
Principal Clerk: Registration and Licensing (SM084-B18)(T7)x1

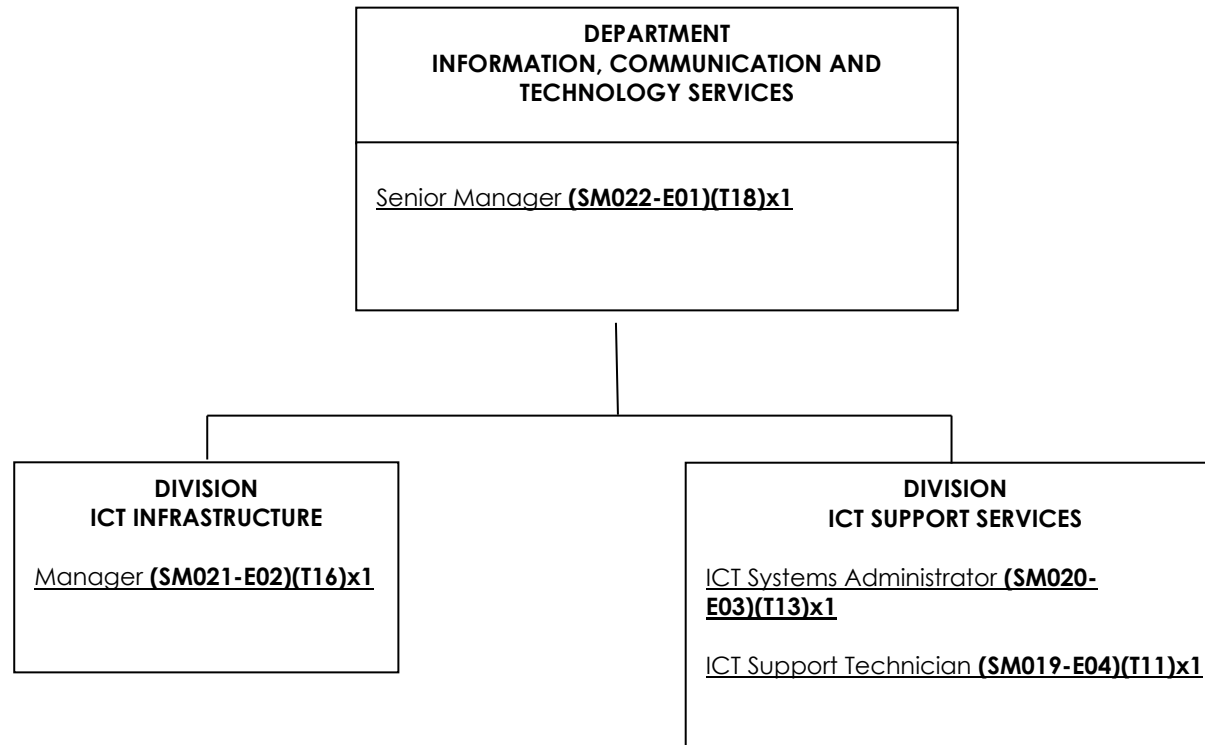
**SUB-SECTION
MOORREESBURG**
Principal Clerk: Registration and Licensing (SM084-B18)(T7)x2

**SUB-SECTION
MALMESBURY**
Superintendent (DLTC/VTS/Public Transport) (DM/015/CM/PS/012)(T12)x1
Examiner of Driving Licenses (Grade A) (SM089-B22)(T9)x1
Examiner of Driving Licenses (Grade L) (SM088-B23)(T7)x1
Examiner of Motor Vehicles (Grade A) (SM087-B20)(T9)x1
Roadworthy Assistant (SM082-B21)(T3)x1

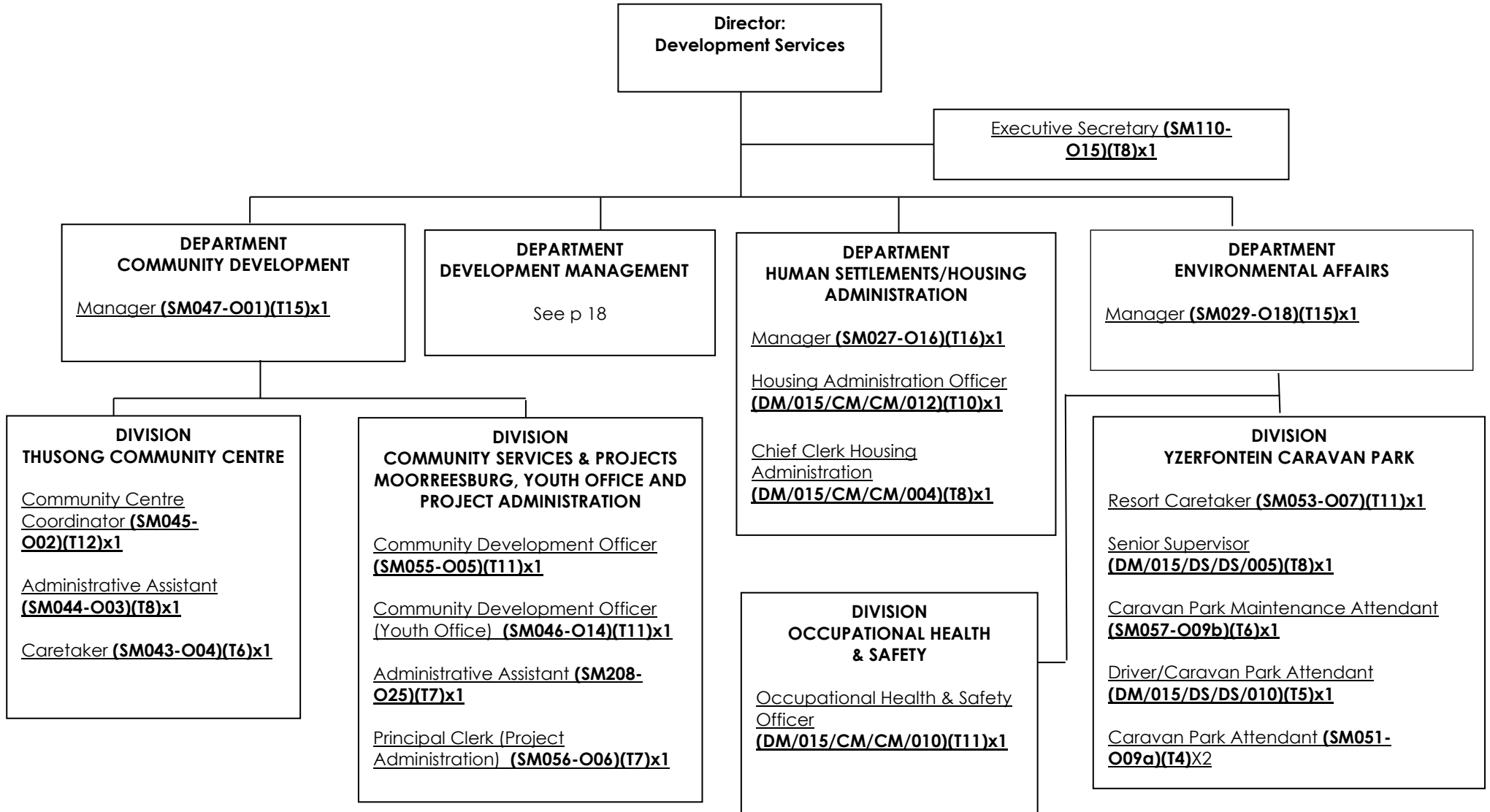
**SUB-SECTION
MOORREESBURG**
Management Representative for DLTC/VTS (SM090-B16a)(T11)x1
Examiner of Driving Licenses (Grade A) (SM089-B22)(T9)x1
Examiner of Driving Licenses (Grade L) (SM088-B23)(T7)x1
Examiner of Motor Vehicles (Grade A) (SM087-B20)(T9)x1
Roadworthy Assistant (SM082-B21)(T3)x1

**SWARTLAND MUNICIPALITY
PROPOSED ORGANISATIONAL STRUCTURE
DIRECTORATE ELECTRICAL ENGINEERING SERVICES
Approved by Council on 26 January 2023**

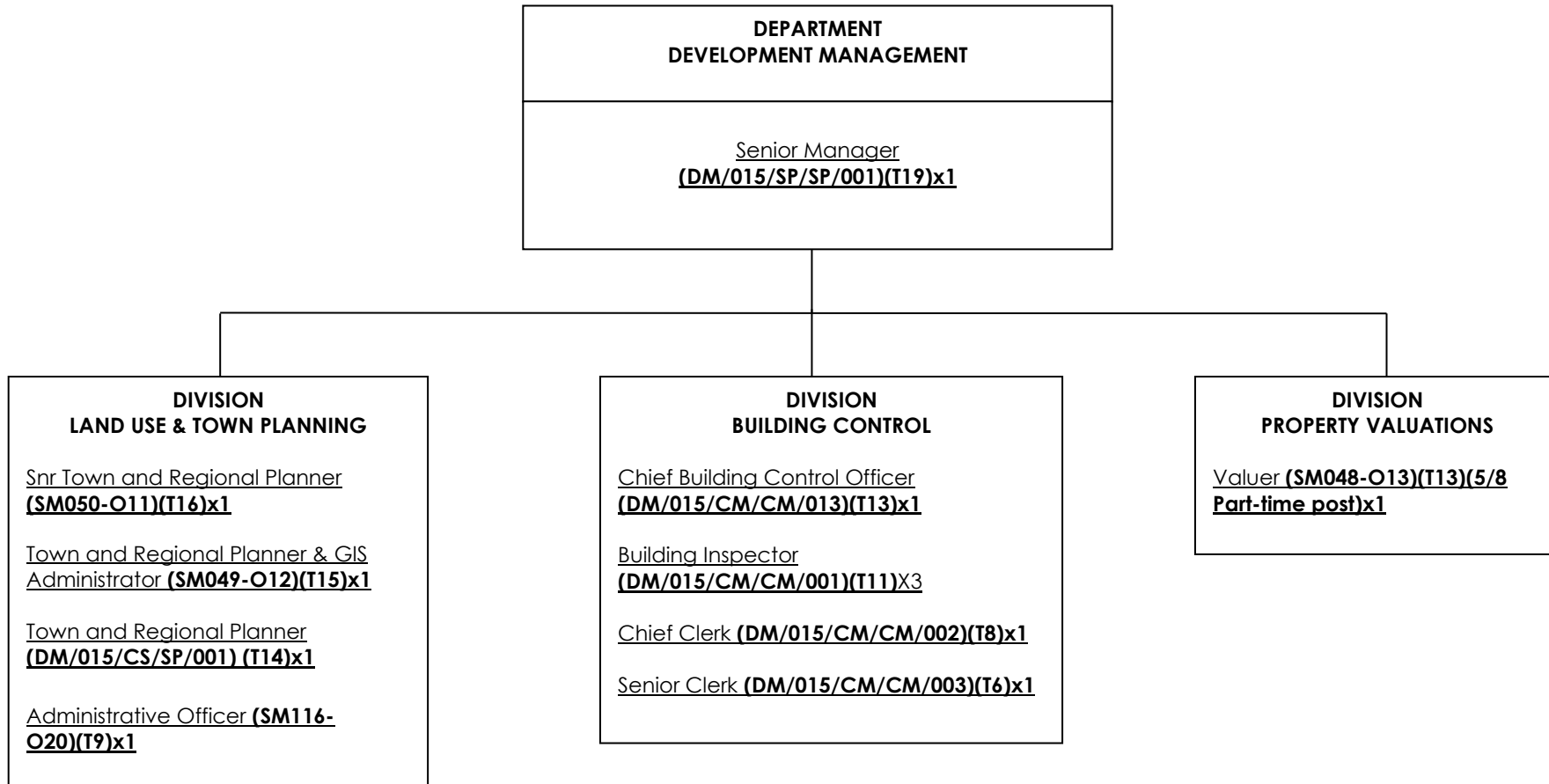


DIRECTORATE ELECTRICAL ENGINEERING SERVICES

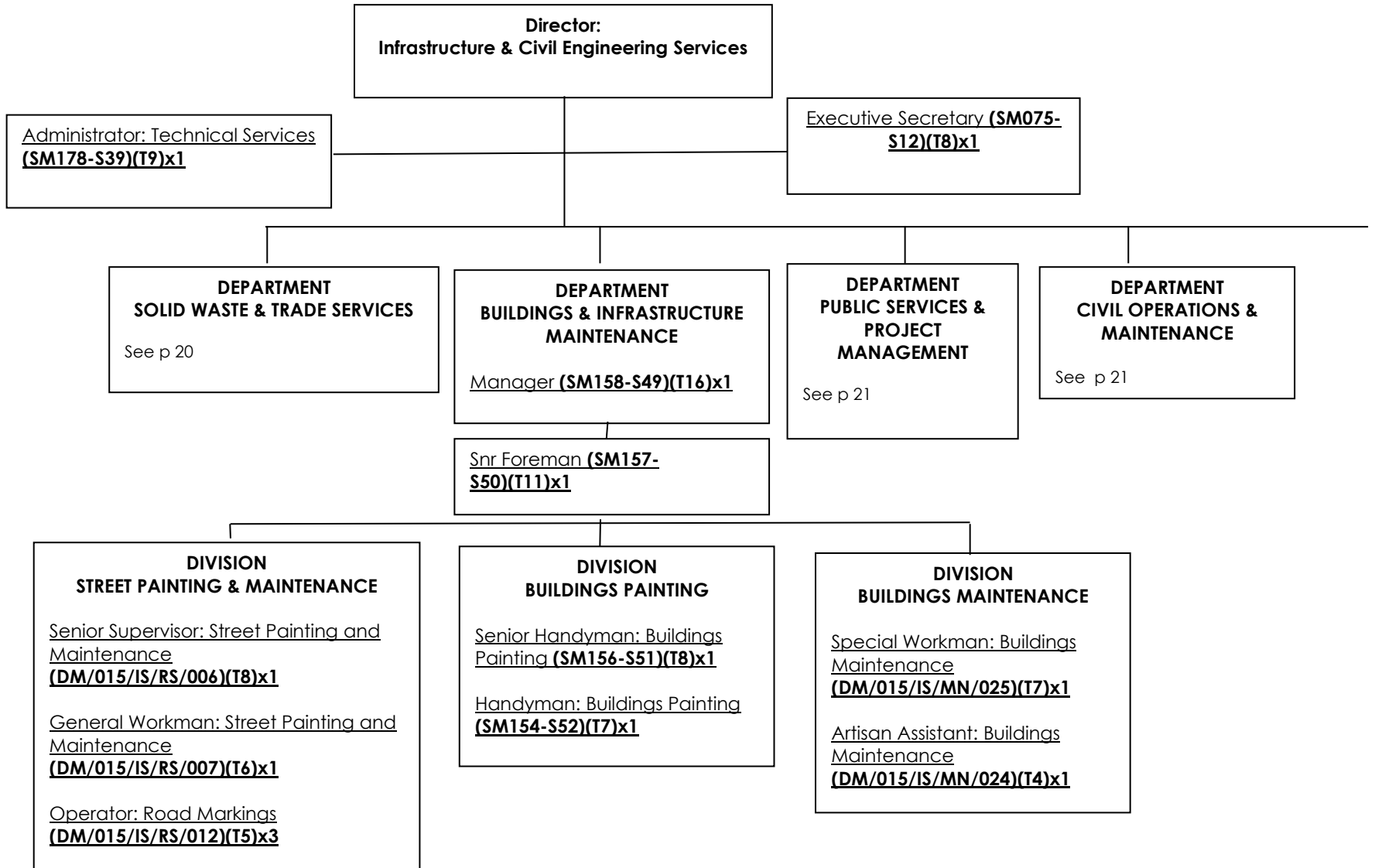
**SWARTLAND MUNICIPALITY
PROPOSED ORGANISATIONAL STRUCTURE
DIRECTORATE DEVELOPMENT SERVICES
Approved by Council on 26 January 2023**

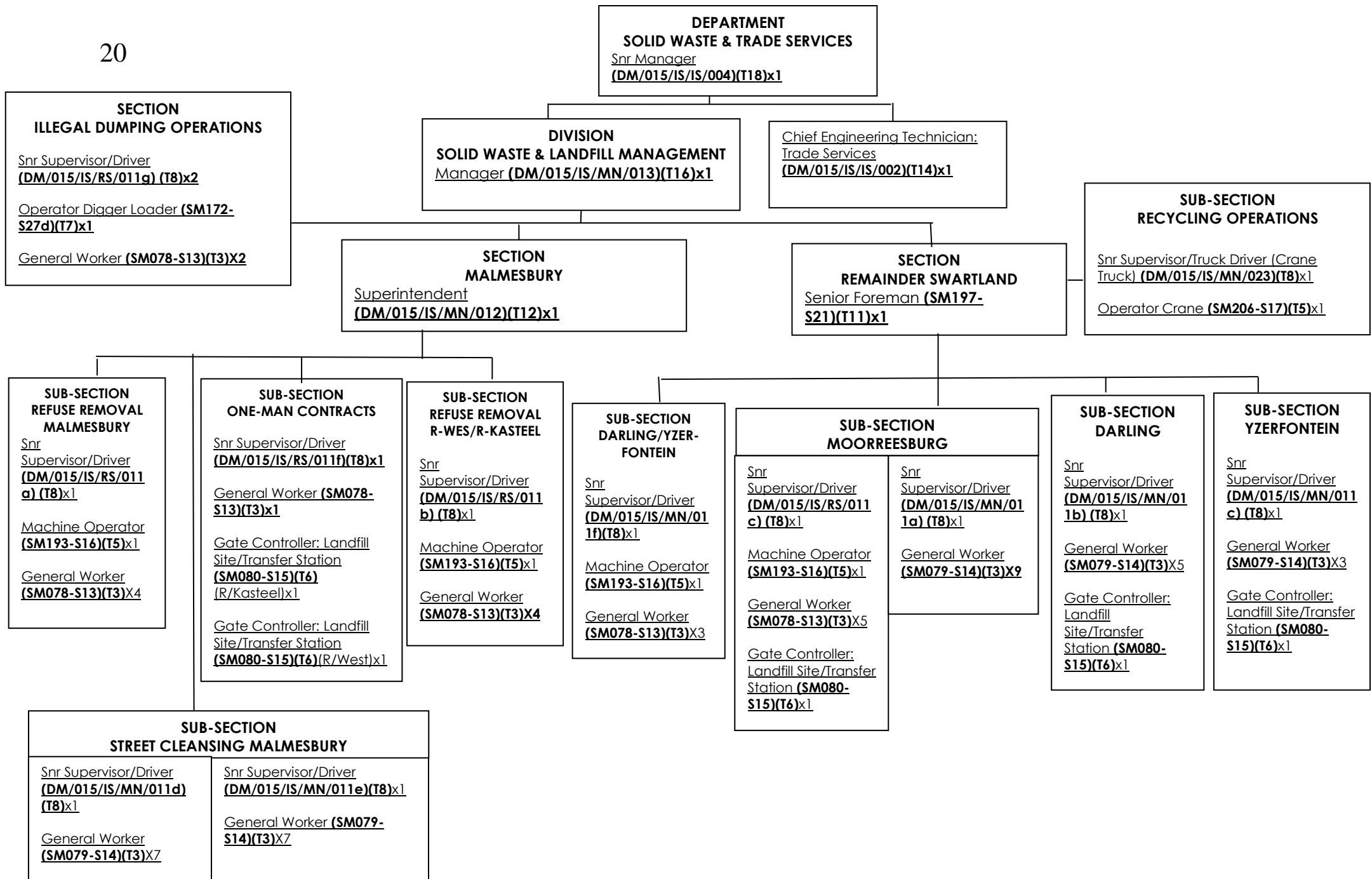


DIRECTORATE DEVELOPMENT SERVICES



**SWARTLAND MUNICIPALITY
PROPOSED ORGANISATIONAL STRUCTURE
DIRECTORATE INFRASTRUCTURE & CIVIL ENGINEERING SERVICES
Approved by Council on 26 January 2023**





DIRECTORATE INFRASTRUCTURE & CIVIL ENGINEERING SERVICES

**DEPARTMENT
CIVIL OPERATIONS & MAINTENANCE**

Snr Manager (DM/015/IS/MN/022)(T17)x1

**DEPARTMENT
PUBLIC SERVICES & PROJECT MANAGEMENT**

Snr Manager (DM/015/IS/IS/003)(T17)x1

Chief Engineering Technician:
Public Services
(DM/015/IS/IS/001)(T14)x1

Manager PMU
(DM/015/IS/IS/006)(T15)x
1

EPWP Data Capturer
(Contract)x1

**DIVISION
WATER SERVICES**
See p 22

**DIVISION
SEWER & WASTE WATER TREATMENT WORKS**

Area Superintendent (SM163-S43)(T13)x1

**DIVISION
ROADS AND STORM
WATER**
See p 23

**DIVISION
PARKS AND RECREATION**
See p 24

**SECTION
SEWER TANK SERVICES**

Snr Supervisor/Truck Driver
(DM/015/IS/MN/030)(T8)x3

Small Plant Operator
(SM067-S03i)(T4)x3

**SECTION
BLOCKAGES AND PUMP
STATIONS**

Foreman
(DM/015/IS/MN/018)(T9)x1

Snr Supervisor: Truck Driver
(DM/015/IS/MN/017)(T8)x1

Small Plant Operator
(SM067-S03j)(T4)x3

Sewer & WWTW Attendant
(DM/015/IS/MN/027)(T4)x2

**SECTION
MALMESBURY WASTE
WATER TREATMENT
WORKS**

Chief Controller Class V
(DM/015/IS/MN/032)(T12)x1

Principal Controller Class IV
(DM/015/IS/MN/031)(T11)x2

Process Controller Class I
(DM/015/IS/MN/028)(T6)x1

General Assistant
(DM/015/IS/MN/026a)(T3)x1

General Assistant
(DM/015/IS/MN/026b)(T3)x1

**SECTION
PPC/MOORREESBURG
WASTE WATER TREATMENT
WORKS**

Principal Process Controller
Class III
(DM/015/IS/MN/016a)(T9)x1

Process Controller Class II
(DM/015/IS/MN/029) (T7)x1

Snr Small Plant Operator
(DM/015/IS/MN/035b) (T5)x2

**SECTION
DARLING
WASTE WATER TREATMENT
WORKS**

Principal Process Controller
Class III
(DM/015/IS/MN/016b)(9)x1

Process Controller Class II
(DM/015/IS/MN/015)(T7)x1

Snr Small Plant Operator
(DM/015/IS/MN/035a)(T5)x1

General Assistant
(DM/015/IS/MN/026c)x1

**SECTION
RIEBEEK KASTEEL
WASTE WATER TREATMENT
WORKS**

Principal Process Controller
Class III
(DM/015/IS/MN/016c)(T9)x1

Process Controller Class II
(DM/015/IS/MN/014)(T7)x1

General Assistant
(DM/015/IS/MN/026)(T3)x2

DIRECTORATE INFRASTRUCTURE & CIVIL ENGINEERING SERVICES

**DEPARTMENT
CIVIL OPERATIONS & MAINTENANCE**

**DIVISION
WATER SERVICES**

Area Superintendent (SM200-S42)(T13)x1

**SECTION
WATER SERVICES MAINTENANCE
MALMESBURY**

**SECTION
WATER SERVICES MAINTENANCE
DARLING**

⁽¹⁾
Snr Supervisor/Truck Driver (SM192-S30f)(T8)x1

Small Plant Operator (SM067-S03a)(T4)x1

General Assistant (SM169-S01x)(T3)x1

⁽³⁾
Operator Digger Loader (SM172-S27d)(T7)x1

Supervisor/Storeman (SM170-S25a)(T7)x1

⁽⁴⁾
Plumber (DM/015/IS/MN/020)(T10)x1

Supervisor / Driver (DM/015/IS/MN/021)(T7)x1

Small Plant Operator (SM067-S03p)(T4)x1

Team Leader (Gen Assts)(SM066-S02i)(T6)x1

General Assistant (SM169-S01r)(T3)x1

⁽⁵⁾
Plumber (DM/015/IS/MN/020)(T10)x1

Small Plant Operator (SM067-S03s)(T4)x1

Team Leader (Gen Assts)(SM066-S02i)(T6)x1

General Assistant (SM169-S01a)(T3)x2

⁽⁶⁾
Plumber (DM/015/IS/MN/020)(T10)x1

Small Plant Operator (SM067-S03r)(T4)x1

Team Leader (Gen Assts)(SM066-S02k)(T6)x1

General Assistant (SM169-S01u)(T3)x1

⁽⁷⁾
Plumber (DM/015/IS/MN/020)(T10)x1

Small Plant Operator (SM067-S03t)(T4)x1

General Assistant (SM169-S01v)(T3)x2

Plumber (DM/015/IS/MN/020)(T10)x1

Small Plant Operator (DM/015/IS/MN/019(b))(T4)x2

General Assistant (SM169-S01w)(T3)x1

⁽²⁾
Bricklayer (SM069-S06d)(T9)x1

General Assistant (SM169-S01t)(T3)x2

**SECTION
WATER SERVICES MAINTENANCE
MOORREESBURG**

Plumber (DM/015/IS/MN/020)(T10)x1

Team Leader (Gen Assts)(SM066-S02f)(T6)x1

Small Plant Operator (DM/015/IS/MN/019a)(T4)x1

General Assistant (SM169-S01s)(T3)x2

DIRECTORATE INFRASTRUCTURE & CIVIL ENGINEERING SERVICES

**DEPARTMENT
CIVIL OPERATIONS & MAINTENANCE**

**DIVISION
ROADS AND STORM WATER**
Area Superintendent (SM201-S41)(T13)x1

Supervisor/Storeman (SM170-S25b)(T7)x1

SECTION DARLING
Asst Superintendent (DM/015/IS/RS/005a)(T11)x1
Artisan/Bricklayer (DM/015/IS/RS/003c)(T9)x1
Operator Grader (Final Layer)(SM173-S28c)(T9)x1
Snr Supervisor/Truck Driver (SM192-S30d)(T8)x2
Operator Digger Loader (SM172-S27c)(T7)x1
Supervisor/Storeman (SM170-S25c)(T7)x1
Team Leader (Gen Assts)(SM066-S02e)(T6)x1
Small Plant Operator (DM/015/IS/RS/010b)(T4)
General Assistant (SM169-S01h)(T3)x4

SECTION CONSTRUCTION & MAINTENANCE Team A
Asst Superintendent (DM/015/IS/IS/005b)(T11)x1
Artisan/Bricklayer (DM/015/IS/RS/003b)(T9)x1
Snr Supervisor/Truck Driver (SM192-S30c)(T8)x1
Team Leader (Gen Assts)(SM066-S02d)(T6)x1
Small Plant Operator [CT2] (SM067-S03c)(T4)x2
General Assistant [CT2] (SM169-S01d)(T3)x5

SUB-SECTION MAINTENANCE: SIDEWALKS & STORM WATER RIEBEKE
Snr Supervisor/Truck Driver (SM192-S30a)(T8)x1
Team Leader (Gen Assts)(SM066-S02c)(T6)x1
Small Plant Operator [ST2] (DM/015/IS/RS/010a)(T4)x6

SUB-SECTION CONSTRUCTION & MAINTENANCE: GRADING
Operator Grader (Final Layer)(SM173-S28a)(T9)x1
General Assistant [CT1] (SM169-S01b)(T3)x1

SECTION CONSTRUCTION & MAINTENANCE Team B
Asst Superintendent (DM/015/IS/IS/005b)(T11)x1
Artisan/Bricklayer (DM/015/IS/RS/003b)(T9)x1
Snr Supervisor/Truck Driver (SM192-S30c)(T8)x1
Operator Loader (SM171-S26a)(T6)x1
Small Plant Operator [CT1] (SM067-S03d)(T4)x2
General Assistant [CT3] (SM169-S01e)(T3)x5
SUB-SECTION MAINTENANCE: SIDEWALKS & STORM WATER MALMESBURY
Snr Supervisor/Truck Driver (SM192-S30a)(T8)x1
Small Plant Operator [ST1] (SM067-S03a)(T4)x1
General Assistant [ST1] (SM169-S01c)(T3)x2

SECTION MAINTENANCE: PATCHWORK
Foreman (DM/015/IS/RS/004)(T9)x1
Team Leader (Gen Assts)(SM066-S02b)(T6)x1
Small Plant Operator (SM067-S03b)(T4)x1
General Assistant (SM169-S01f)(T3)x4

SECTION MOORREESBURG
Asst Superintendent (DM/015/IS/RS/005c)(T11)x1
Artisan/Bricklayer (DM/015/IS/RS/003a)(T9)x1
Snr Supervisor/Truck Driver (SM192-S30b)(T8)x1
Operator Grader (Final Layer) (SM173-S28b)(T9)x1
Operator Digger Loader (SM172-S27a)(T7)x1
Team Leader (Gen Assts)(SM066-S02a)(T6)x1
Small Plant Operator (SM067-S03f)(T4)x1
General Assistant (SM169-S01a)(T3)x5

SUB-SECTION MAINTENANCE: SIDEWALKS & STORM WATER YZERFONTEIN
Snr Supervisor/Truck Driver (DM/015/IS/RS/011)(T8)x1
Small Plant Operator (DM/015/IS/RS/010b)(T4)x1
General Assistant (SM169-S01h)(T3)x1

DIRECTORATE INFRASTRUCTURE & CIVIL ENGINEERING SERVICES

**DEPARTMENT
CIVIL OPERATIONS & MAINTENANCE**

**DIVISION
PARKS AND RECREATION**

Area Superintendent (SM162-S44)(T13)x1

Supervisor/Storeman (DM/015/IS/PC/004)(T7)x1

Senior Coordinator: Sports (DM/015/IS/PC/018) (T11)x1

**SECTION
PARKS & FACILITIES MOORREESBURG**

<i>Senior Foreman (DM/015/IS/PC/017c)(T10)x1</i>	<i>Handyman (DM/015/IS/PC/011)(T5)x1</i>
<i>Supervisor/ Truck Driver (DM/015/IS/PC/015)(T8)x1</i>	<i>Handyman (Koringberg)(DM/015/IS/PC/013)(T5)x1</i>
<i>Supervisor/Tractor Driver (SM191-S29b)(T7)x2</i>	<i>General Assistant (SM169-S01o)(T3)x6</i>
<i>Caretaker Sports Fields (Gene Louw)(SM137-S36b)(T7)x1</i>	SUB-SECTION SWIMMING POOL
<i>Caretaker Sports Fields (Rosenhof)(SM137-S36a)(T7)x1</i>	<i>Lifeguard/Caretaker (SM068-S05b)(T9)x1</i>
<i>Handyman (DM/015/IS/PC/012a)(T5)x4</i>	

**SECTION
PARKS, OPEN AREAS,
CEMETERIES & SPORTS FIELDS
MALMESBURY**

Senior Foreman (DM/015/IS/PC/017a)(T10)x1

Supervisor/Tractor Driver (SM191-S29a)(T7)x4

Snr Team Leader (Gen Assts) (DM/015/IS/PC/008)(T6)x1

Handyman (DM/015/IS/PC/005a)(T5)x5

General Assistant (SM169-S01i)(T3)x7

**SUB-SECTION
PARKS, OPEN AREAS,
CEMETERIES & SPORTS FIELDS
RIEBEEK-WEST/ RIEBEEK- KASTEEL**

Supervisor/Tractor Driver (DM/015/IS/PC/010)(T7)x1

Handyman (DM/015/IS/PC/009)x2

**SUB-SECTION
SWIMMING POOL MALMESBURY**

Lifeguard/Caretaker (SM068-S05c)(T9)x2

Handyman: Swimming Pool (DM/015/IS/PC/006)(T5)x1

**SUB-SECTION
GENERAL MAINTENANCE &
GARDENING
MALMESBURY**

Foreman/Truck Driver (DM/015/IS/PC/016)(T8)x1

General Assistant (SM169-S01y)(T3)x3

SUB-SECTION SPORTS FIELDS

Caretaker Sports Fields (Wesbank)(SM137-S36c)(T7)x1

Caretaker Sports Fields (Chatsw)(SM137-S36d)(T7)x1

Groundsman (DM/015/IS/PC/014)(T6)x1

**SECTION
PARKS AND FACILITIES
DARLING**

Senior Foreman (DM/015/IS/PC/017b)(T10)x1

Supervisor/Tractor Driver (SM191-S29c)(T7)x1

Snr Caretaker: Sports Fields (DM/015/IS/PC/007)(T7)x1

Handyman (DM/015/IS/PC/005c)(T5)x4

General Assistant (SM169-S01m)(T3)x3

General Assistant (Yzerfontein) (SM169-S01n)(T3)

**SUB-SECTION
SWIMMING POOL**

Lifeguard/Caretaker (SM068-S05a)(T9)x1