



CLEAN AUDITS SINCE 2010/11



*Ons gee gestalte aan 'n beter toekoms!
We shape a beter future!
Sibumba ikamva elingcono!*

File ref: 15/3/13-8/Erf 675, 12521

Enquiries:
A. de Jager

3 March 2022

David Hellig and Abrahamse Land Surveyors
P.O. Box 18
PAARL
7622

For attention: M. Botha

Per Registered Post

Dear Sir/Madam

PROPOSED EXEMPTION FROM APPROVAL FOR THE REGISTRATION OF A SERVITUDE OVER THE REMAINDER OF ERF 675, MALMESBURY, IN FAVOUR OF ERF 12521, MALMESBURY

Your application, with reference number M175/21, dated 14 February 2022, on behalf of J.W. Spencer Liebenberg, J. van der Merwe, the Messrs Egan Prop Group (Pty) Ltd, Malmesbury Village (Pty) Ltd, Ashprop Inv Number 3 (Pty) Ltd, Blackthorn Game (Pty) Ltd and Pangolin Design (Pty) Ltd, refers.

The registration of a servitude pipeline area (136m² in extent) over the Remainder of Erf 675, Malmesbury, in favour of Erf 12521, Malmesbury, complies with the requirements of Section 34 of Swartland Municipality: Municipal Land Use Planning By-Law (PG 8226 of 25 March 2020) and is thus exempted from approval from Swartland Municipality.

Yours sincerely


MUNICIPAL MANAGER
per Department Development Services
A.J.J.s

Copies: *Land Surveyor General Private Bag X9028, Cape Town, 8000*
Director: Civil Engineering Services

Rig'asseblief alle korrespondensie aan:

Die Munisipale Bestuurder
Privaatsak X52
Malmesbury 7299

Darling Tel: 022 492 2237

Tel: 022 487 9400

Faks/Fax: 022 487 9440

Epos/Email: swartlandmun@swartland.org.za

Moorreesburg Tel: 022 433 2246

Kindly address all correspondence to:

The Municipal Manager
Private Bag X52
Malmesbury 7299

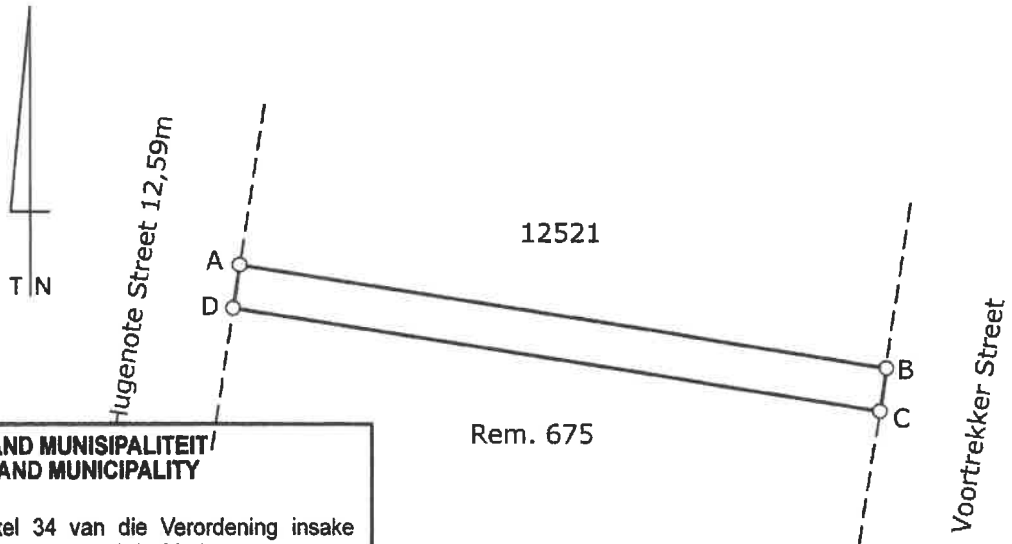
Yzerfontein Tel: 022 451 2366

DAVID HELLIG & ABRAHAMSE, LAND SURVEYORS

SIDES Metres		ANGLES OF DIRECTION	CO-ORDINATES Y System WG 19° X			S.G. No.
		Constant		± 0,00	+3 700 000,00	
AB	45,22	278 54 20	A	+25 185,59	+ 3 384,12	Approved
BC	3,00	8 45 00	B	+25 140,92	+ 3 391,12	
CD	45,23	98 55 00	C	+25 141,38	+ 3 394,09	
DA	3,00	188 55 10	D	+25 186,06	+ 3 387,08	
		8 H6	⊕	+25 410,80	+ 3 228,01	for Surveyor-General
		14 H6	⊕	+25 198,91	+ 3 430,07	

Beacon Description:

A B C D 12 mm iron peg



**SWARTLAND MUNISIPALITEIT/
SWARTLAND MUNICIPALITY**

Vrygestel ingevolge artikel 34 van die Verordening insake Munisipale Grondgebruikbeplanning (PK 8226 van 25 Maart 2020).

Exempted in terms of section 34 of the Municipal Land Use Planning By-Law (PN 8226 of 25 March 2020).

2022/03/03

DATUM/DATE

MUNISIPALE BESTUURDER
MUNICIPAL MANAGER

Scale 1: 500

The figure **A B C D** represents **136 square metres** of land, being

A Servitude Pipeline Area over the Remainder of Erf 675 Malmesbury

Situate in **the Swartland Municipality**

Administrative District of **Malmesbury**

Province of the Western Cape

Surveyed in **July 2021**

by me

S G Dreyer
S G DREYER

Professional Land Surveyor
(PLS1028)

This diagram is annexed to No. dated i.f.o.

Registrar of Deeds

The original diagram is No. 799/1886 annexed to Transfer No. 1886. .93

File No.
S.R. No.
Comp. BHNY-4124 (7035)