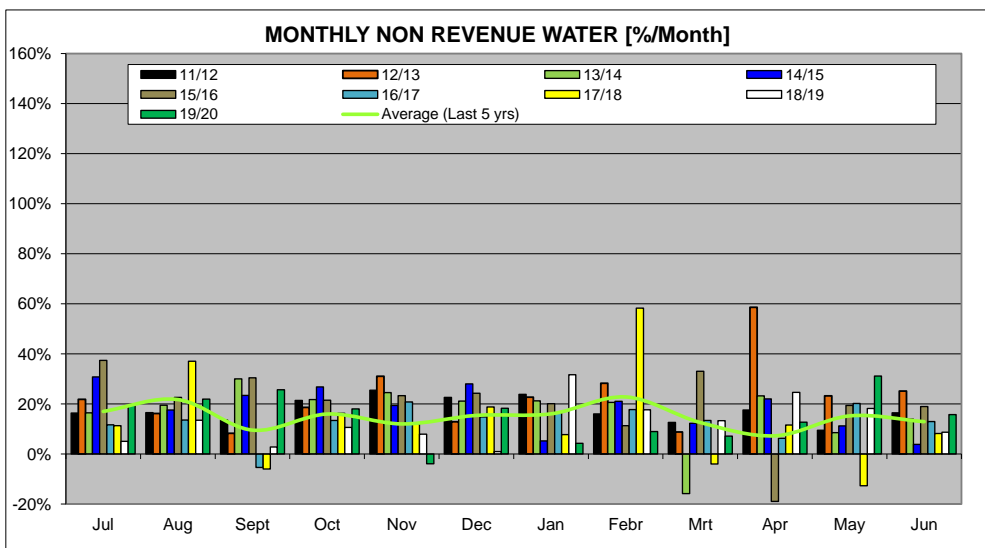
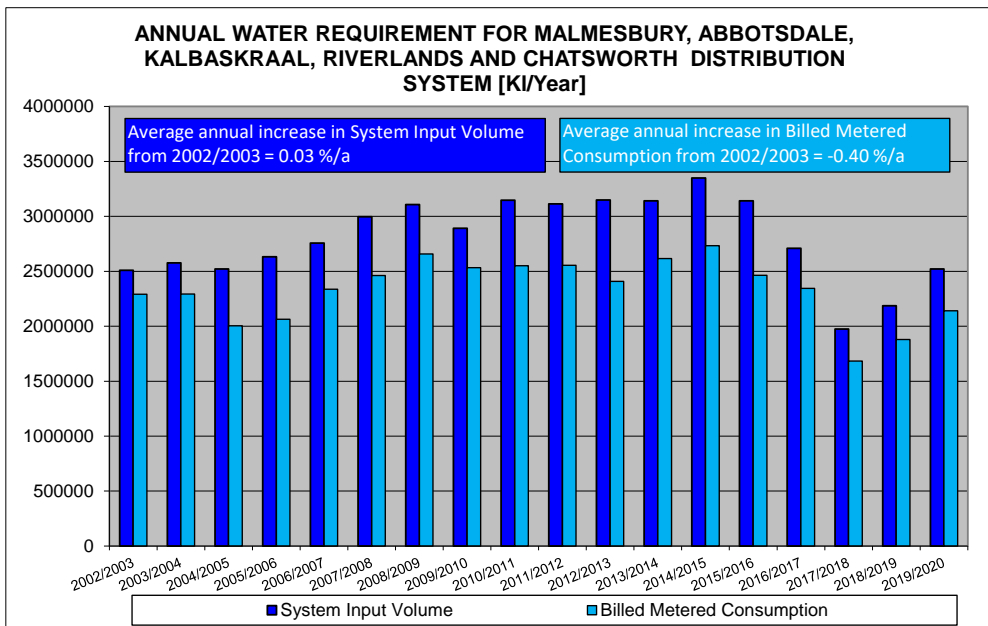
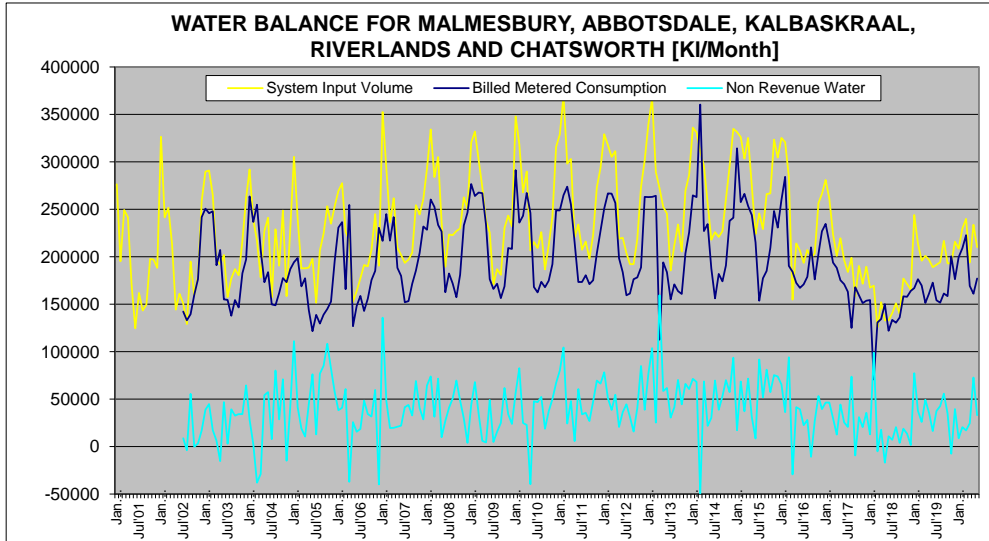
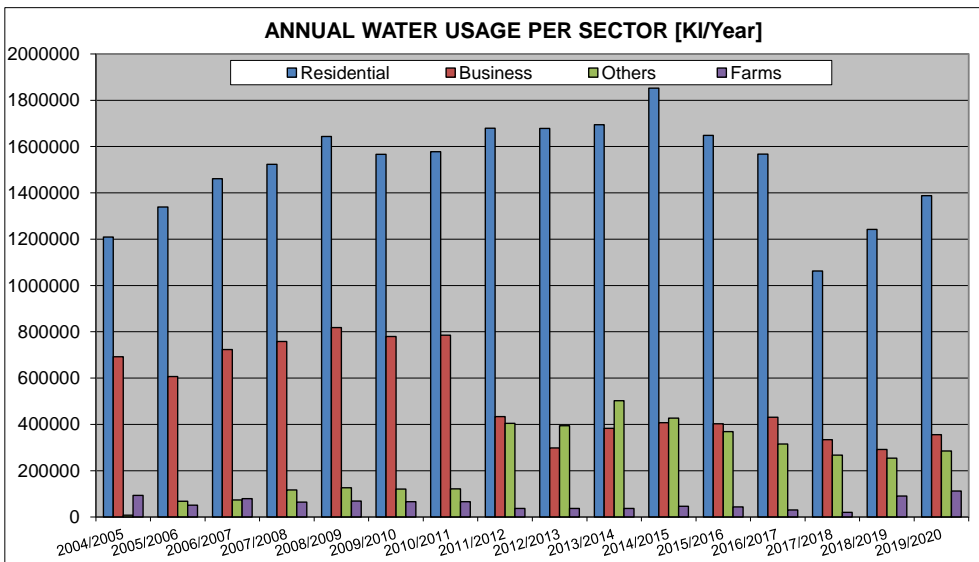
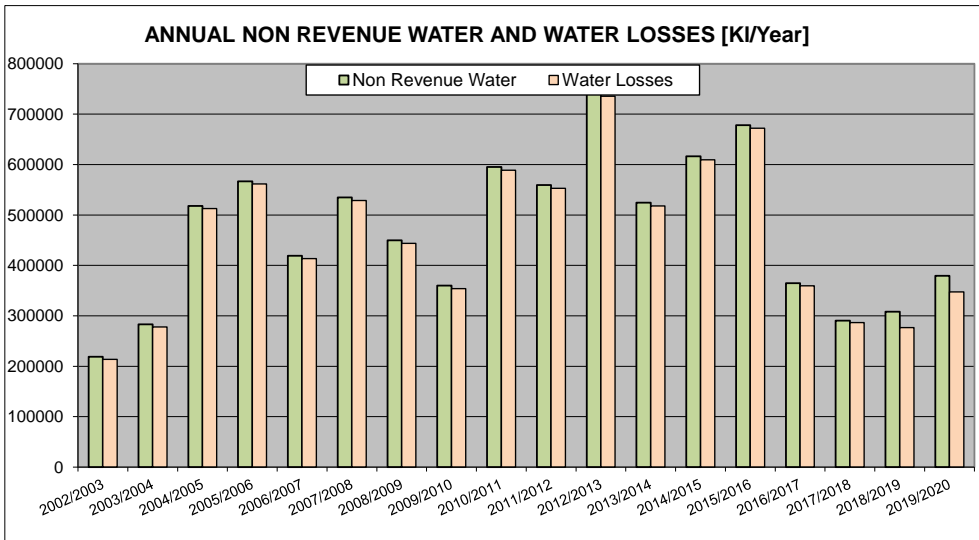
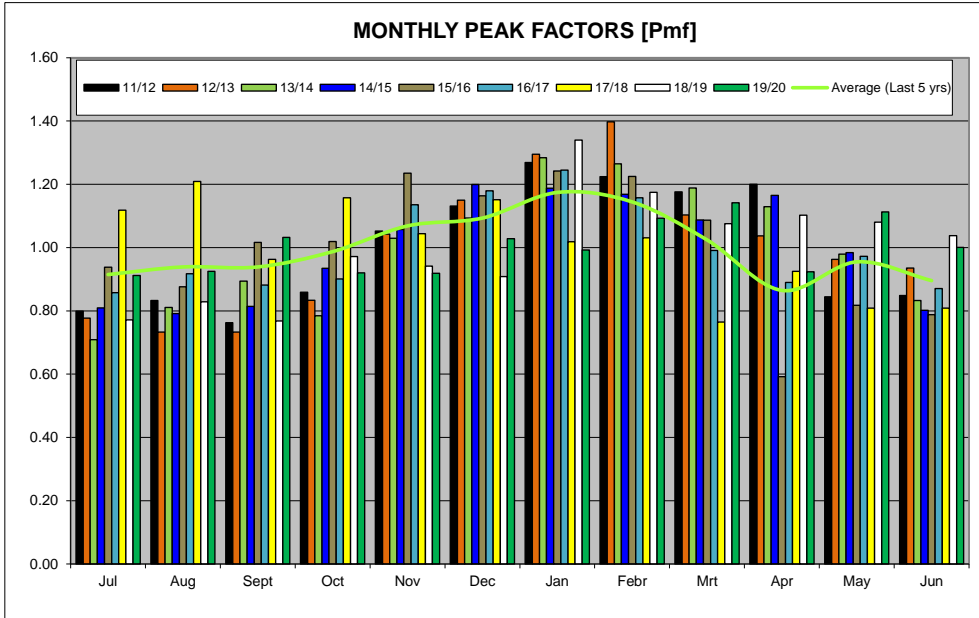


SWARTLAND MUNICIPALITY																						
Malmesbury, Abbotdale, Kalbaskraal, Riverlands, Chatsworth																						
TREATED WATER SUPPLY																						
Month	Year	System Input Values										Non Revenue Water (NRW)										
		Revenue Water										Non Revenue Water (NRW)										
		Boreholes	Paasdam/Dam	WCDM	Total	Billed Metered Consumption	Unbilled Un-metered Consumption	Monthly NRW	Monthly NRW	Annual NRW	Annual NRW	Unbilled Metered Consumption	Unbilled Un-metered Consumption	Apparent Losses			Real Losses		Monthly Water Losses	Monthly Water Losses	Annual Water Losses	Annual Water Losses
[m³]	[m³]	[m³]	[m³]	[m³]	[m³]	[m³]	[m³]	[m³]	[m³]	[m³]	[m³]	[m³]	[m³]	[m³]	[m³]	[m³]	[m³]	[m³]	[m³]	[m³]	[m³]	[m³]
Jan12	2012	10884	19253	20412	19253	0	44489	0	44489	0	489	892	426	2294	2294	3697	4491	4491	2145	0	75402	23.4%
Feb12	2012	10157	18183	19231	18183	0	41136	0	41136	0	385	875	3975	1539	1539	2524	3071	3071	1800	0	75402	23.4%
Mar12	2012	12680	20320	21507	20320	0	42851	0	42851	0	469	909	3647	171	171	3841	4571	4571	2571	0	75402	23.4%
Apr12	2012	14289	20424	21475	20424	0	42677	0	42677	0	438	824	4019	2009	2009	4387	4019	4019	1843	0	75402	23.4%
May12	2012	11138	17528	18566	17528	0	38574	0	38574	0	427	807	3557	4738	4738	3474	3474	3474	1938	0	75402	23.4%
Jun12	2012	2502	27823	30179	27823	0	38772	0	38772	0	864	781	3617	1904	1904	1186	3818	3818	1261	0	75402	23.4%
Jul12	2012	11138	17528	18566	17528	0	38574	0	38574	0	427	807	3557	4738	4738	3474	3474	3474	1938	0	75402	23.4%
Aug12	2012	2502	27823	30179	27823	0	38772	0	38772	0	864	781	3617	1904	1904	1186	3818	3818	1261	0	75402	23.4%
Sept12	2012	11138	17528	18566	17528	0	38574	0	38574	0	427	807	3557	4738	4738	3474	3474	3474	1938	0	75402	23.4%
Oct12	2012	11138	17528	18566	17528	0	38574	0	38574	0	427	807	3557	4738	4738	3474	3474	3474	1938	0	75402	23.4%
Nov12	2012	11138	17528	18566	17528	0	38574	0	38574	0	427	807	3557	4738	4738	3474	3474	3474	1938	0	75402	23.4%
Dec12	2012	11138	17528	18566	17528	0	38574	0	38574	0	427	807	3557	4738	4738	3474	3474	3474	1938	0	75402	23.4%
Jan13	2013	11138	17528	18566	17528	0	38574	0	38574	0	427	807	3557	4738	4738	3474	3474	3474	1938	0	75402	23.4%
Feb13	2013	11138	17528	18566	17528	0	38574	0	38574	0	427	807	3557	4738	4738	3474	3474	3474	1938	0	75402	23.4%
Mar13	2013	11138	17528	18566	17528	0	38574	0	38574	0	427	807	3557	4738	4738	3474	3474	3474	1938	0	75402	23.4%
Apr13	2013	11138	17528	18566	17528	0	38574	0	38574	0	427	807	3557	4738	4738	3474	3474	3474	1938	0	75402	23.4%
May13	2013	11138	17528	18566	17528	0	38574	0	38574	0	427	807	3557	4738	4738	3474	3474	3474	1938	0	75402	23.4%
Jun13	2013	11138	17528	18566	17528	0	38574	0	38574	0	427	807	3557	4738	4738	3474	3474	3474	1938	0	75402	23.4%
Jul13	2013	11138	17528	18566	17528	0	38574	0	38574	0	427	807	3557	4738	4738	3474	3474	3474	1938	0	75402	23.4%
Aug13	2013	11138	17528	18566	17528	0	38574	0	38574	0	427	807	3557	4738	4738	3474	3474	3474	1938	0	75402	23.4%
Sept13	2013	11138	17528	18566	17528	0	38574	0	38574	0	427	807	3557	4738	4738	3474	3474	3474	1938	0	75402	23.4%
Oct13	2013	11138	17528	18566	17528	0	38574	0	38574	0	427	807	3557	4738	4738	3474	3474	3474	1938	0	75402	23.4%
Nov13	2013	11138	17528	18566	17528	0	38574	0	38574	0	427	807	3557	4738	4738	3474	3474	3474	1938	0	75402	23.4%
Dec13	2013	11138	17528	18566	17528	0	38574	0	38574	0	427	807	3557	4738	4738	3474	3474	3474	1938	0	75402	23.4%
Jan14	2014	11138	17528	18566	17528	0	38574	0	38574	0	427	807	3557	4738	4738	3474	3474	3474	1938	0	75402	23.4%
Feb14	2014	11138	17528	18566	17528	0	38574	0	38574	0	427	807	3557	4738	4738	3474	3474	3474	1938	0	75402	23.4%
Mar14	2014	11138	17528	18566	17528	0	38574	0	38574	0	427	807	3557	4738	4738	3474	3474	3474	1938	0	75402	23.4%
Apr14	2014	11138	17528	18566	17528	0	38574	0	38574	0	427	807	3557	4738	4738	3474	3474	3474	1938	0	75402	23.4%
May14	2014	11138	17528	18566	17528	0	38574	0	38574	0	427	807	3557	4738	4738	3474	3474	3474	1938	0	75402	23.4%
Jun14	2014	11138	17528	18566	17528	0	38574	0	38574	0	427	807	3557	4738	4738	3474	3474	3474	1938	0	75402	23.4%
Jul14	2014	11138	17528	18566	17528	0	38574	0	38574	0	427	807	3557	4738	4738	3474	3474	3474	1938	0	75402	23.4%
Aug14	2014	11138	17528	18566	17528	0	38574	0	38574	0	427	807	3557	4738	4738	3474	3474	3474	1938	0	75402	23.4%
Sept14	2014	11138	17528	18566	17528	0	38574	0	38574	0	427	807	3557	4738	4738	3474	3474	3474	1938	0	75402	23.4%
Oct14	2014	11138	17528	18566	17528	0	38574	0	38574	0	427	807	3557	4738	4738	3474	3474	3474	1938	0	75402	23.4%
Nov14	2014	11138	17528	18566	17528	0	38574	0	38574	0	427	807	3557	4738	4738	3474	3474	3474	1938	0	75402	23.4%
Dec14	2014	11138	17528	18566	17528	0	38574	0	38574	0	427	807	3557	4738	4738	3474	3474	3474	1938	0	75402	23.4%
Jan15	2015	11138	17528	18566	17528	0	38574	0	38574	0	427	807	3557	4738	4738	3474	3474	3474	1938	0	75402	23.4%
Feb15	2015	11138	17528	18566	17528	0	38574	0	38574	0	427	807	3557	4738	4738	3474	3474	3474	1938	0	75402	23.4%
Mar15	2015	11138	17528	18566	17528	0	38574	0	38574	0	427	807	3557	4738	4738	3474	3474	3474	1938	0	75402	23.4%
Apr15	2015	11138	17528	18566	17528	0	38574	0	38574	0	427	807	3557	4738	4738	3474	3474	3474	1938	0	75402	23.4%
May15	2015	11138	17528	18566	17528	0	38574	0	38574	0	427	807	3557	4738	4738	3474	3474	3474	1938	0	75402	23.4%
Jun15	2015	11138	17528	18566	17528	0	38574	0	38574	0	427	807	3557	4738	4738	3474	3474	3474	1938	0	75402	23.4%
Jul15	2015	11138	17528	18566	17528	0	38574	0	38574	0	427	807	3557	4738	4738	3474	3474	3474	1938	0	75402	23.4%
Aug15	2015	11138	17528	18566	17528	0	38574	0	38574	0	427	807	3557	4738	4738	3474	3474	3474	1938	0	75402	23.4%
Sept15	2015	11138	17528	18566	17528	0	38574	0	38574	0	427	807	3557	4738	4738	3474	3474	3474	1938	0	75402	23.4%
Oct15	2015	11138	17528	18566	17528	0	38574	0	38574	0	427	807	3557	4738	4738	3474	3474	3474	1938	0	75402	23.4%
Nov15	2015	11138	17528	18566	17528	0	38574	0	38574	0	427	807	3557	4738	4738	3474	3474	3474	1938	0	75402	23.4%
Dec15	2015	11138	17528	18566	17528	0	38574	0	38574	0	427	807	3557	4738	4738	3474	3474	3474	1938	0	75402	23.4%
Jan16	2016	11138	17528	18566	17528	0	38574	0	38574	0	427	807	3557	4738	4738	3474	3474	3474	1938	0	75402	23.4%
Feb16	2016	11138	17528	18566	17528	0	38574	0	38574	0	427	807	3557	4738	4738	3474	3474	3474	1938	0	75402	23.4%
Mar16	2016	11138	17528	18566	17528	0	38574	0	38574	0	427	807	3557	4738	4738	3474	3474	3474	1938	0	75402	23.4%
Apr16	2016	11138	17528	18566	17528	0	38574	0	38574	0	427											

WATER BALANCE AND USAGE FOR MALMESBURY DISTRIBUTION SYSTEM



WATER BALANCE AND USAGE FOR MALMESBURY DISTRIBUTION SYSTEM



WATER BALANCE AND USAGE FOR MALMESBURY DISTRIBUTION SYSTEM

