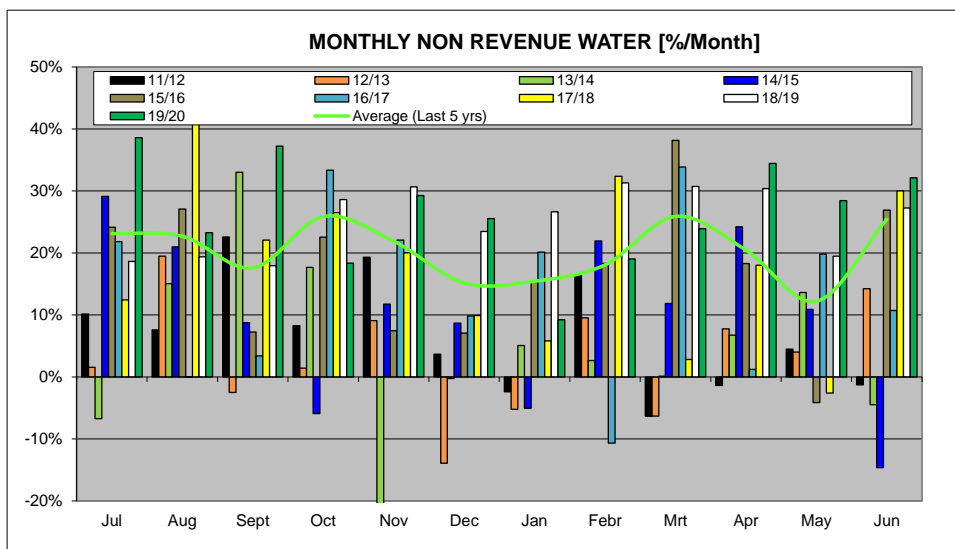
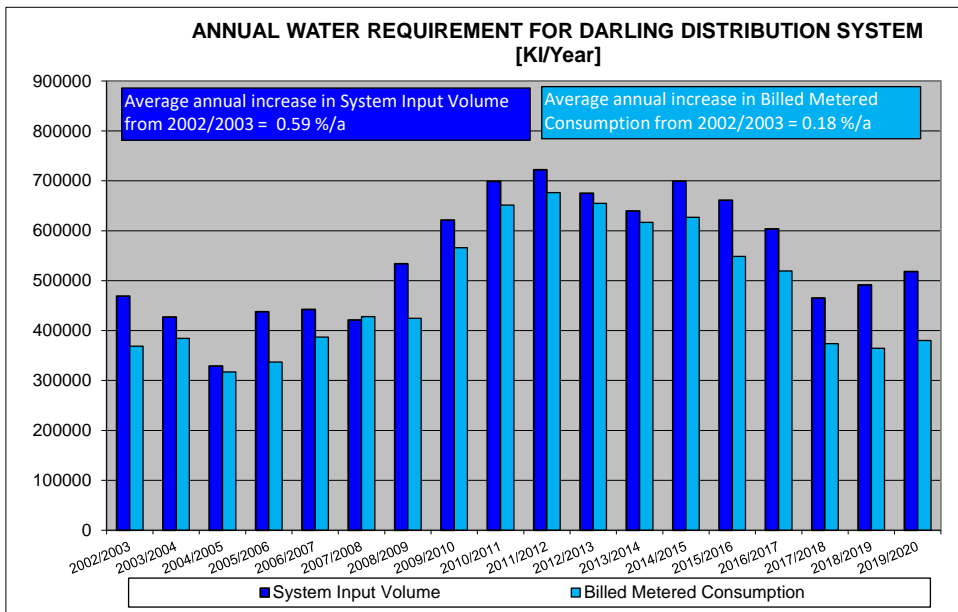
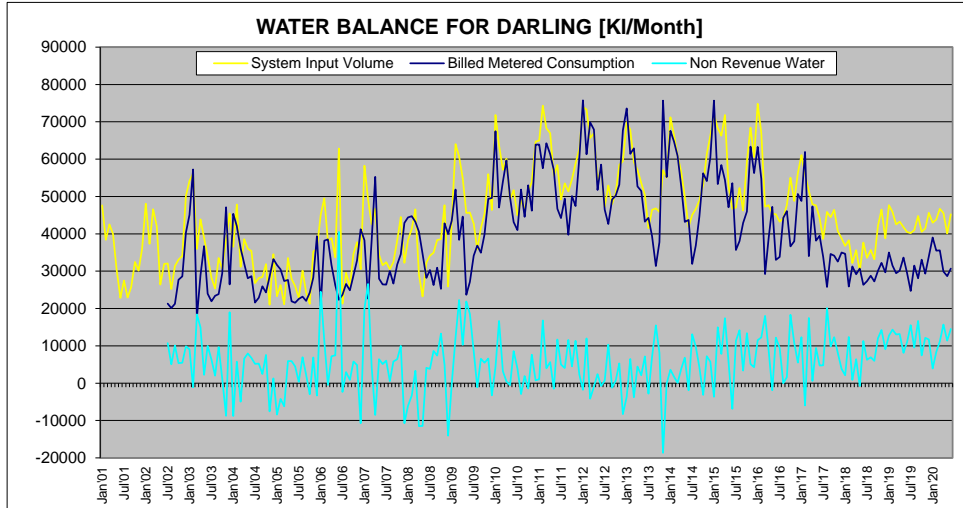


SWARTLAND MUNICIPALITY																		
Darling																		
Month	Year	TREATED WATER SUPPLY																
		System Input Volume		Revenue Water				Non Revenue Water (NRW)										
		Treated Water from WTW	Billed Metered Consumption	Billed Un-metered Consumption	Monthly NRW	Monthly NRW	Annual NRW	Annual NRW	Unbilled Metered Consumption	Unbilled Un-metered Consumption	Apparent Losses				Monthly Water Losses	Monthly Water Losses	Annual Water Losses	Annual Water Losses
											Illegal Connections	Inaccurate Meters	Administrative Errors	Leak, Reservoirs overflow, etc.				
[m³]	[m³]	[m³]	[m³]	[%]	[m³]	[%]	[m³]	[m³]	2%	10%	5%	85%	[m³]	[%]	[m³]	[%]		
Estimated Percentages (Variables)										Estimated Percentages (Variables)								
Jan01		47610																
Feb01		38360																
Mar01		42530																
Apr01		49000																
May01		30450																
Jun01		22860																
Jul01		27450																
Aug01		22710																
Sep01		30450																
Oct01		30120																
Nov01		36160																
Dec01		37930																
Jan02		46620																
Feb02		41980																
Mar02		26430																
Apr02		31660																
May02		35990	2131	0	10729	33.5%	0	64	213	1066	633	8852	10685	30.3%				
Jun02		25190	20110	0	6080	20.2%	0	460	101	603	603	4179	4030	20.0%				
Sep02		31370	23261	0	8113	25.9%	0	63	201	1006	503	8347	10056	32.1%				
Oct02		33380	27723	0	5367	16.2%	0	66	106	529	265	4391	5291	16.9%				
Nov02		34880	26546	0	5449	15.6%	0	68	168	544	211	4441	4441	12.8%				
Dec02		40170	45298	0	3872	9.7%	0	100	195	100	489	6110	9772	19.9%				
Jan03		54170	46079	0	6091	11.2%	0	108	180	688	449	7456	6863	12.7%				
Feb03		46150	37323	0	1183	2.6%	0	112	24	430	430	462	11105	2.1%				
Mar03		39570	17568	0	1842	4.7%	0	12	367	184	817	15222	18340	46.6%				
Apr03		39570	17568	0	1842	4.7%	0	12	367	184	817	15222	18340	46.6%				
May03		38960	36706	0	2254	5.8%	0	108	28	44	109	1296	1486	3.8%				
Jun03		33330	23849	0	6981	20.9%	0	68	108	691	346	6228	6113	20.2%				
Jul03		29220	21918	0	7301	25.0%	0	61	378	1890	646	5669	5669	19.2%				
Aug03		25410	23396	0	2014	7.9%	0	61	39	196	88	1620	1963	7.7%				
Sep03		33540	28844	0	1596	4.8%	0	62	67	360	199	2692	2692	8.0%				
Oct03		30630	28482	0	1148	3.7%	0	61	51	32	109	1087	1087	3.5%				
Nov03		36390	47393	0	4713	12.9%	0	77	178	479	439	7286	6770	22.3%				
Dec03		42480	24592	0	1906	4.5%	0	69	64	150	148	374	6212	7484	24.3%			
Jan04		36550	45348	0	8738	24.1%	0	73	177	487	444	7363	8871	24.3%				
Feb04		34490	35268	0	1772	5.1%	0	68	114	569	284	4711	4711	13.7%				
Mar04		31160	36118	0	4958	15.9%	0	62	100	502	291	4167	5020	16.1%				
Apr04		36990	31979	0	6611	17.1%	0	77	131	653	737	5423	6534	16.2%				
May04		36000	29268	0	7338	20.4%	0	62	91	378	197	6069	7666	21.3%				
Jun04		35400	28642	0	6758	19.1%	0	71	134	669	344	6550	6557	18.9%				
Jul04		28190	21603	0	1189	4.2%	0	64	24	123	61	3941	4139	14.6%				
Aug04		28150	22873	0	5271	18.7%	0	56	104	521	261	4328	5219	18.5%				
Sep04		28450	25285	0	2485	8.7%	0	67	49	243	121	2016	2428	8.5%				
Oct04		31870	24363	0	7498	23.5%	0	69	64	150	148	374	6212	7484	24.3%			
Nov04		21010	28979	0	7769	36.0%	0	42	182	743	381	6317	7611	36.2%				
Dec04		24860	28399	0	3539	14.3%	0	43	164	814	411	4213	4213	17.0%				
Jan05		23270	31666	0	8396	36.1%	0	47	189	844	422	7007	8443	36.3%				
Feb05		26290	30473	0	4193	16.0%	0	43	186	425	212	3624	4246	16.2%				
Mar05		21160	29237	0	8177	38.7%	0	42	214	624	311	5162	6219	29.4%				
Apr05		33550	27645	0	5905	17.6%	0	67	117	684	292	4845	5638	17.4%				
May05		29100	28197	0	1090	3.7%	0	56	108	569	284	4661	4661	16.4%				
Jun05		26030	21222	0	5028	17.3%	0	52	108	446	223	3698	4468	17.1%				
Jul05		22910	22229	0	381	1.7%	0	46	7	34	17	272	335	1.5%				
Aug05		30110	23163	0	6947	23.1%	0	49	116	689	344	5716	6897	22.9%				
Sep05		24320	22075	0	2245	9.2%	0	49	44	220	110	1828	2197	9.0%				
Oct05		29770	28246	0	1524	5.1%	0	50	106	564	282	4661	4661	14.2%				
Nov05		36200	28311	0	6889	19.0%	0	60	136	684	341	6669	6818	19.4%				
Dec05		36300	36360	0	13320	36.7%	0	72	268	1332	170	2816	3352	9.4%				
Jan06		42140	36447	0	5693	13.5%	0	63	100	688	438	6129	7484	24.3%				
Feb06		46500	38172	0	11328	24.4%	0	69	225	1123	561	9120	11229	24.2%				
Mar06		38340	38166	0	454	1.2%	0	74	74	368	184	3684	3684	9.6%				
Apr06		38860	31617	0	7243	18.6%	0	78	143	716	368	6847	7165	18.4%				
May06		33700	26248	0	7452	22.1%	0	67	148	738	369	6129	7385	21.9%				
Jun06		42842	22430	0	4202	9.8%	0	69	109	499	219	4097	4097	14.4%				
Jul06		21304	23666	0	2362	11.1%	0	43	148	240	120	1986	2405	11.3%				
Aug06		28460	28196	0	466	1.6%	0	46	10	51	26	466	466	1.6%				
Sep06		2790	2481	0	389	13.9%	0	42	87	474	42	84	84	3.0%				
Oct06		34980	28853	0	5837	16.8%	0	69	115	677	288	4787	5788	16.8%				
Nov06		37700	32968	0	4632	12.3%	0	63	109	678	338	3664	4778	12.6%				
Dec06		30520	41219	0	10689	35.1%	0	61	215	1076	538	8931	10760	35.3%				
Jan07		45080	38164	0	6916	15.3%	0	147	242	1338	675	10689	10689	23.7%				
Feb07		42660	22666	0	20054	47.0%	0	69	269	2690	1325	21991	26435	63.8%				
Mar07		42810	38109	0	4205	10.0%	0	65	148	689	442	2411	3668	14.2%				
Apr07		46740	29237	0	8497	18.2%	0	63	173	699	430	7172	8991	18.4%				
May07		34400	27963	0	6437	18.7%	0	69	127	637	318	5286	6347	18.4%				
Jun07		31810	28492	0	1158	3.4%	0	65	162	816	408	4928	5098	16.0%				
Jul07		32420	26399	0	6021	18.6%	0	65	119	696	298	4844	4959	18.4%				
Aug07		30260	30329	0	531	1.7%	0	61	19	47	23	384	370	1.5%				
Sep07		32960	26660	0	5790	17.6%	0	65	115	673	292	4725	5725	17.6%				
Oct07		38210	31758	0	6452	16.9%	0	76	128	638	319	5292	6376	16.7%				
Nov07		44300	34576	0	9724	22.0%	0	63	107	688	344	6028	6888	22.2%				
Dec07		52210	42623	0	10713	20.5%	0	64	216	1078	539	8945	10777	20.5%				
Jan08		38310	44424	0	4694	12.2%	0	77	123	417	209	5122	6171	16.1%				
Feb08		41420	44720	0	3300	7.9%	0	63	109	638	169	2698	3383	8.2%				
Mar08		46550	43210	0	3340	7.2%	0	53	85	325	162	2695	3247	7.9%				
Apr08		29950	49556	0	11520	38.5%	0	65	158	878	439	6911	11522	38.5%				
May08		23210	34861	0	11451	49.3%	0	48	230	1150	575	8453	11497	49.5%				
Jun08		32310	28218	0	4092	12.7%	0	66	84	493	241	3434	4027	12.5%				
Jul08		34130	30421	0	3649	10.7%	0	69	89	478	189	3178	3781	11.1%				
Aug08		34970	26311	0	8659	24.8%	0	70	122	859	429	7129	8589	24.8%				
Sep08		36880	30948	0	7132	19.3%	0	67	147	734	367	6021	7325	19.9%				
Oct08		38670	29297	0	13273	34.4%	0	77	284	1320	660	10953	13196	34.4%				
Nov08		478																

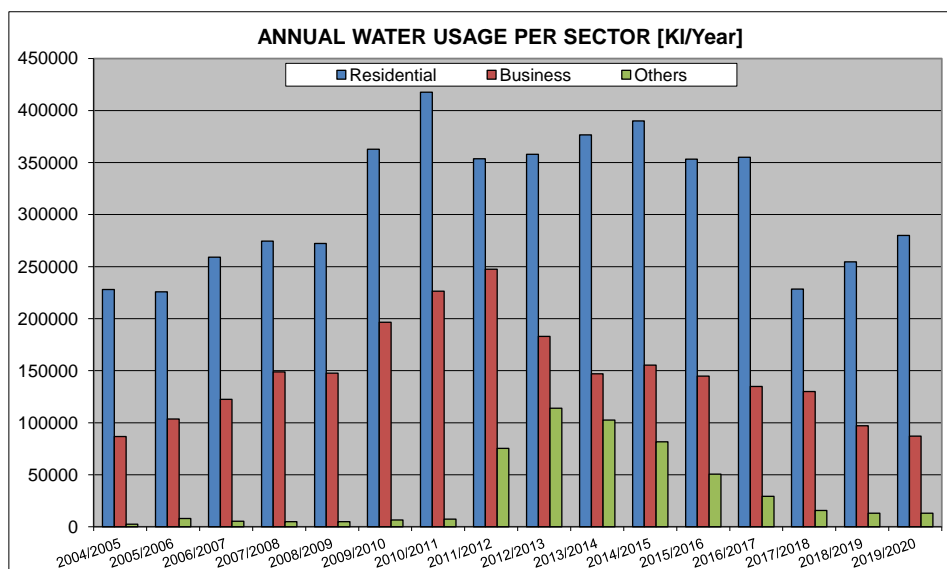
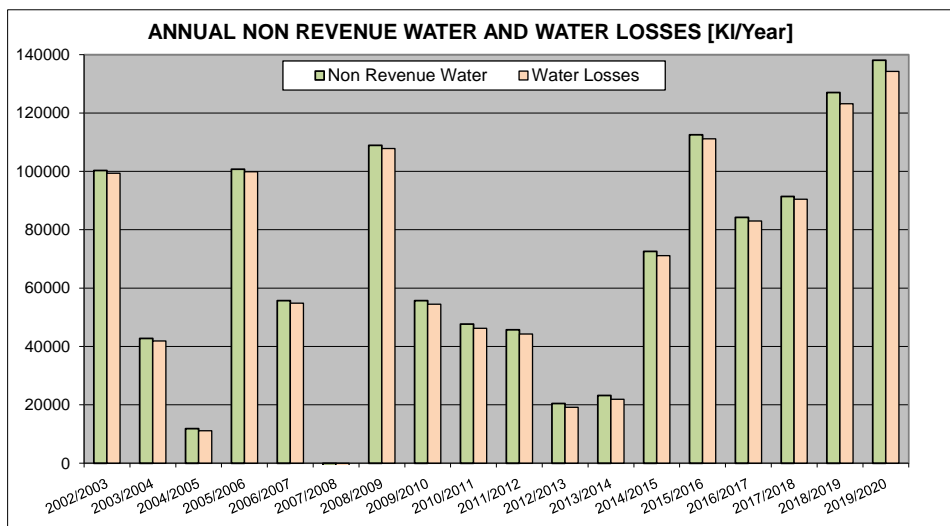
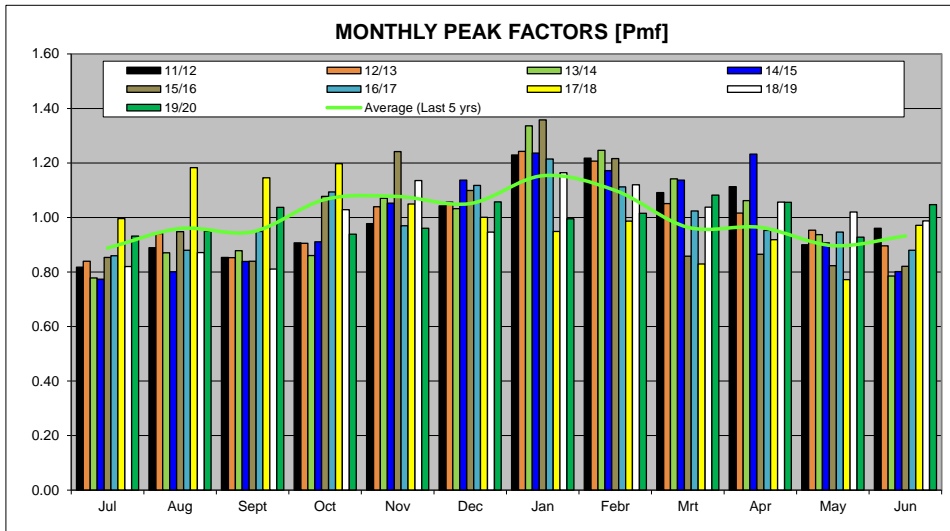
SWARTLAND MUNICIPALITY																			
Darling																			
TREATED WATER SUPPLY																			
Month	Year	Revenue Water				Non Revenue Water (NRW)													
		Treated Water from WTW	Billed Metered Consumption	Billed Un-metered	Monthly NRW	Monthly NRW	Annual NRW	Annual NRW	Unbilled Metered Consumption	Unbilled Un-metered	Illegal Connections	Inaccurate Meters	Administrative Errors	Leaks, Reserv. overflow, etc.	Monthly Water Losses	Monthly Water Losses	Annual Water Losses	Annual Water Losses	
Apr14		45077	31945	0	13132	29.1%			0	90	261	1304	652	10525	13042	28.9%			
Apr14		46684	36721	0	9763	21.0%			0	93	334	1726	893	14322	17255	24.0%			
Apr14		48909	44627	0	4282	8.8%			0	98	84	418	209	3473	4184	8.6%			
Oct14		43102	32626	0	10476	24.3%			0	106	265	1363	652	12893	15522	36.0%			
Nov14		61390	54162	0	7228	11.8%			0	102	132	142	708	2654	2756	11.5%			
Dec14		66277	60590	0	5787	8.7%	7254	10.4%	0	133	112	691	281	4650	5614	8.5%	71155	10.2%	
Jan15		72036	70971	0	1065	1.5%			0	144	146	378	189	3137	3273	4.5%			
Feb15		66298	63315	0	14881	21.9%			0	137	297	1484	742	12361	14844	21.9%			
Mar15		66276	64113	0	7863	11.9%			0	143	166	773	387	6416	7740	11.7%			
Apr15		71811	54411	0	17299	24.1%			0	144	345	1729	893	14322	17255	24.0%			
May15		52843	47087	0	5756	10.9%			0	106	113	565	283	4650	5650	10.7%			
Jun15		46739	43074	0	3665	7.8%			0	93	130	593	346	575	620	14.8%			
Jul15		47634	39663	0	11965	25.1%			0	84	225	1127	564	8925	11271	24.0%			
Aug15		52242	38085	0	14157	27.1%			0	104	281	1405	703	11664	14053	26.9%			
Sep15		46292	42981	0	3311	7.2%			0	90	65	326	163	2708	3298	7.6%			
Oct15		59366	49974	0	13392	22.6%			0	119	465	1327	664	11017	13273	22.4%			
Nov15		69508	63934	0	5574	7.9%			0	137	99	497	248	4123	4967	7.3%			
Dec15		62068	60688	0	4380	7.1%			0	121	61	416	208	3452	4159	6.9%	111193	16.8%	
Jan16		74826	63038	0	11788	15.8%			0	150	227	1137	568	8436	11368	15.2%			
Feb16		67014	54734	0	12280	18.3%			0	134	243	1215	607	10081	12146	18.1%			
Mar16		47295	29243	0	18052	38.2%			0	95	369	1795	897	14886	17947	38.0%			
Apr16		47695	38987	0	8708	18.3%			0	95	172	862	431	7157	8623	18.1%			
May16		45373	47242	0	16531	36.4%			0	95	267	1396	694	11027	13680	29.7%			
Jun16		45227	33049	0	12178	26.9%			0	80	242	1209	604	10033	12038	26.7%			
Jul16		43234	33900	0	9334	21.6%			0	86	197	935	467	7758	9348	21.6%			
Aug16		44343	44262	0	81	0.0%			0	89	28	141	45	491	107	4.2%			
Sep16		47703	46079	0	1624	3.4%			0	95	31	153	76	1289	1529	3.2%			
Oct16		55032	36664	0	18368	33.3%			0	110	365	1823	911	15129	18228	33.1%			
Nov16		40176	36016	0	10760	26.8%			0	96	213	1067	534	8627	10671	21.1%			
Dec16		56184	50660	0	5524	9.8%	84219	14.0%	0	112	108	542	271	4500	5422	9.6%	83012	13.8%	
Jan17		61983	48778	0	13205	20.1%			0	122	244	1218	609	10112	12183	19.9%			
Feb17		59068	610140	0	30654	51.9%			0	132	112	409	326	5098	4094	10.9%			
Mar17		61689	34045	0	17443	28.3%			0	103	347	1734	867	14392	17340	33.7%			
Apr17		47387	47307	0	880	1.9%			0	96	100	449	25	490	492	1.0%			
May17		47612	47307	0	304	0.6%			0	96	187	934	467	775	939	19.9%			
Jun17		44446	39894	0	4552	10.2%			0	89	93	466	233	3870	4663	10.6%			
Jul17		48420	43444	0	4976	10.3%			0	87	86	428	218	3608	4286	12.4%			
Aug17		45873	42078	0	2005	4.3%			0	92	400	2000	1000	16603	20003	43.6%			
Sep17		44440	34627	0	9813	22.1%			0	89	194	972	486	8071	9724	21.9%			
Oct17		46444	34134	0	12310	26.5%			0	81	104	1223	613	10146	12217	26.3%			
Nov17		40706	32049	0	8657	20.0%			0	81	182	808	454	6703	8076	19.8%			
Dec17		38820	34978	0	3842	9.9%			0	78	75	376	188	3124	3764	9.7%	90466	19.4%	
Jan18		39783	36442	0	3341	8.4%			0	74	41	207	103	1746	2067	5.6%			
Feb18		36265	25895	0	10370	28.6%			0	77	246	1230	615	10212	12303	32.2%			
Mar18		32162	31209	0	952	2.9%			0	64	10	46	42	495	498	1.5%			
Apr18		36919	29198	0	6421	18.9%			0	71	127	636	317	5270	6350	17.8%			
May18		29331	30709	0	778	2.6%			0	60	117	84	42	466	438	1.2%			
Jun18		46292	28261	0	17031	36.8%			0	80	146	1129	569	11223	11223	29.2%			
Jul18		33684	27322	0	6362	18.9%			0	90	119	598	298	4847	5961	17.9%			
Aug18		39693	29777	0	9916	24.4%			0	95	132	681	331	4487	6811	18.9%			
Sep18		33002	27242	0	5760	17.4%			0	90	113	566	283	4603	5660	17.0%			
Oct18		42129	30074	0	12055	28.6%			0	916	235	1174	587	9741	11737	27.9%			
Nov18		46509	32253	0	14256	30.7%			0	327	279	1393	696	11561	13929	29.9%			
Dec18		39172	29672	0	9500	24.3%			0	810	112	178	879	439	628	878	22.7%		
Jan19		47885	34977	0	12708	26.6%			0	329	248	1238	619	10274	12379	26.9%			
Feb19		49676	31036	0	14340	28.9%			0	326	281	1494	702	11857	14944	30.6%			
Mar19		43029	29348	0	13684	31.6%			0	319	255	1273	642	10570	12735	30.0%			
Apr19		43588	30113	0	13156	30.4%			0	321	297	1283	642	10653	12834	29.7%			
May19		41437	29466	0	11971	28.9%			0	316	156	782	391	8948	9634	18.1%			
Jun19		45462	29437	0	11025	24.2%			0	314	184	861	436	8948	10710	26.5%			
Jul19		46233	24702	0	19531	42.2%			0	314	304	1522	761	12630	15217	37.8%			
Aug19		41913	31476	0	10437	24.9%			0	317	268	1162	601	9650	9621	22.9%			
Sep19		44784	28115	0	16669	37.2%			0	324	327	1635	817	13667	16345	36.9%			
Oct19		40237	33097	0	7140	18.4%			0	315	142	712	356	6914	7125	17.6%			
Nov19		41474	29338	0	12136	29.3%			0	317	268	1162	601	9650	11619	28.5%			
Dec19		45644	33976	0	11668	25.6%			0	325	227	1134	567	8416	11343	24.9%			
Jan20		42969	36040	0	3899	9.2%			0	320	163	803	402	3020	3639	8.5%			
Feb20		43644	35020	0	8624	19.8%			0	322	161	803	402	3020	3639	8.5%			
Mar20		46717	36551	0	11166	23.9%			0	327	217	1084	542	8956	10839	23.2%			
Apr20		46098	29898	0	11500	24.4%			0	326	247	1137	569	9760	11375	24.7%			
May20		40989	28674	0	11395	27.8%			0	319	14	222	1108	644	9191	11081	27.7%		
Jun20		45215	30992	0	14223	31.4%			0	324	264	1340	710	11786	14199	31.4%			

ANNUAL TOTALS																	
Year	Revenue Water				Non Revenue Water (NRW)												
	Treated Water from WTW	Billed Metered Consumption	Billed Un-metered	Monthly NRW	Monthly NRW	Annual NRW	Annual NRW	Unbilled Metered Consumption	Un								

WATER BALANCE AND USAGE FOR DARLING DISTRIBUTION SYSTEM



WATER BALANCE AND USAGE FOR DARLING DISTRIBUTION SYSTEM



WATER BALANCE AND USAGE FOR DARLING DISTRIBUTION SYSTEM

