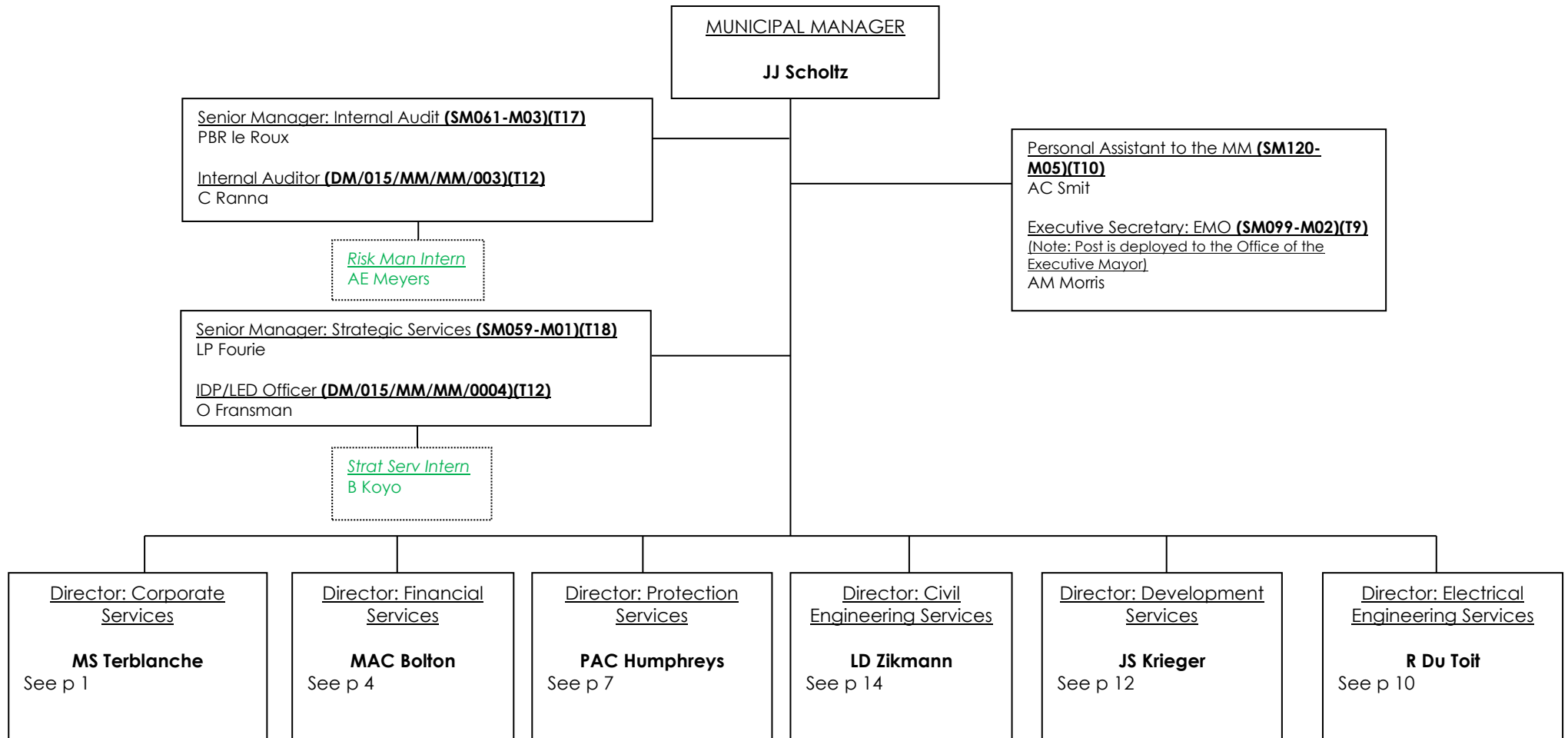
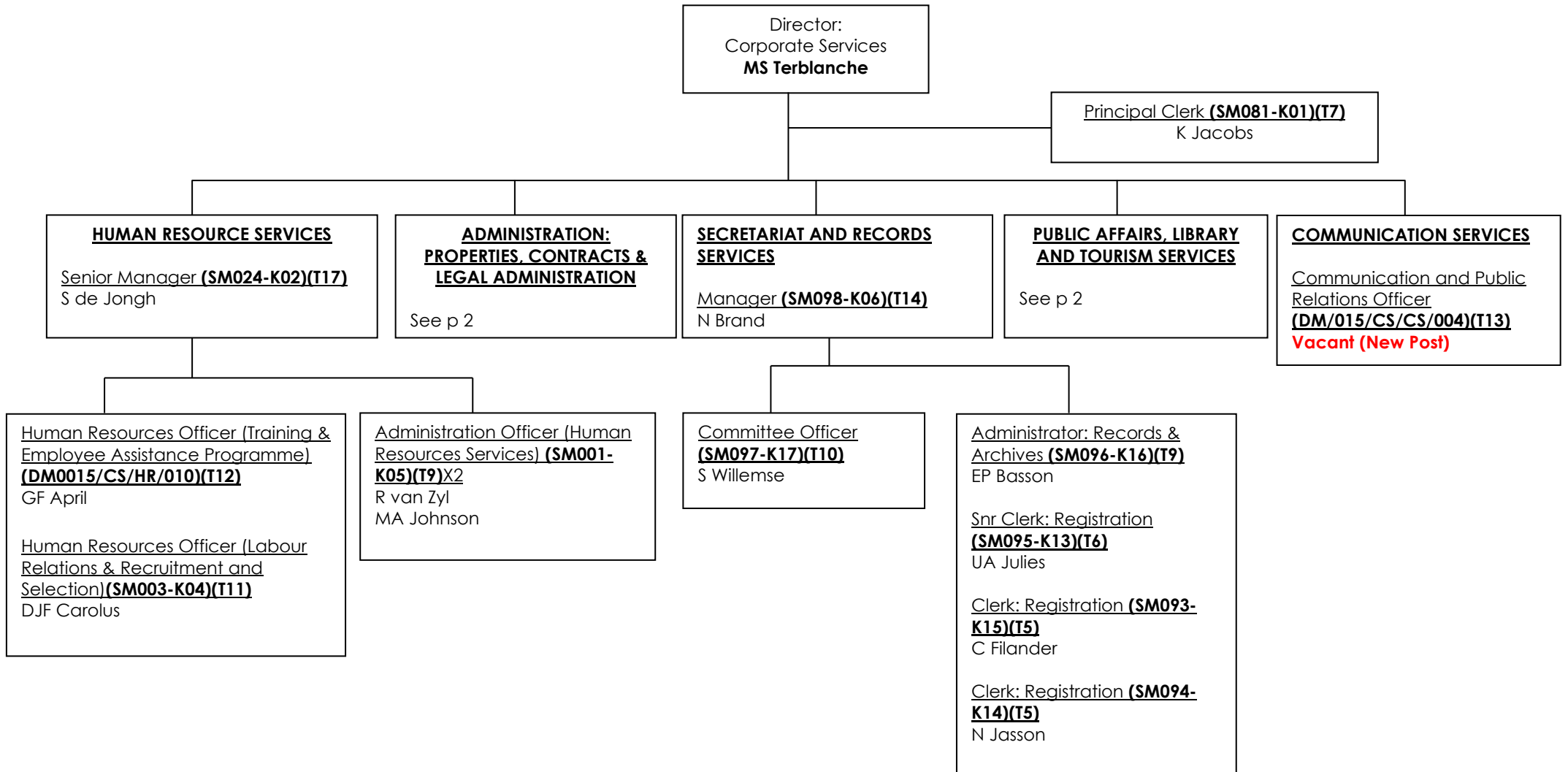


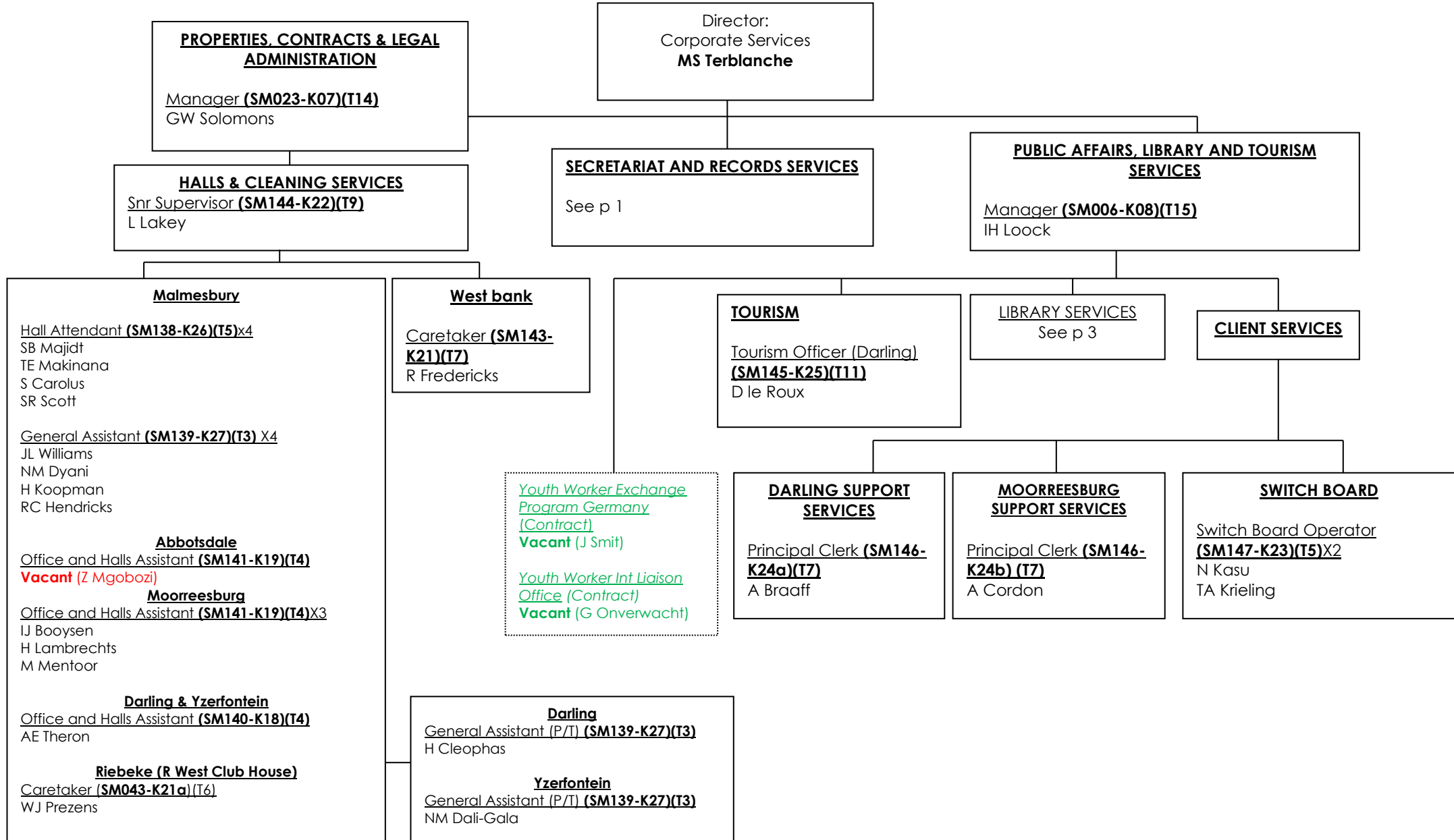
**SWARTLAND MUNICIPALITY**



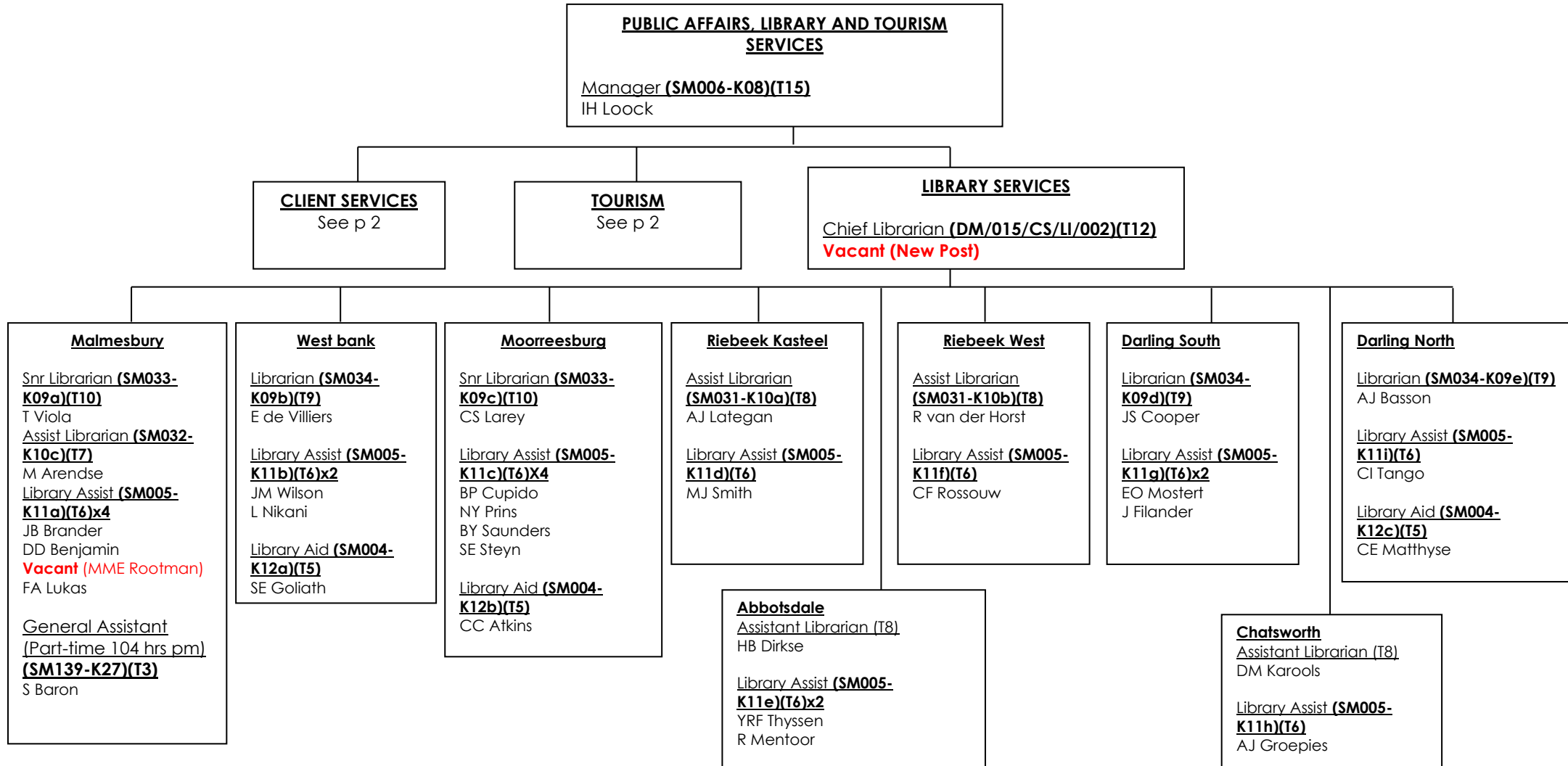
**CORPORATE SERVICES**



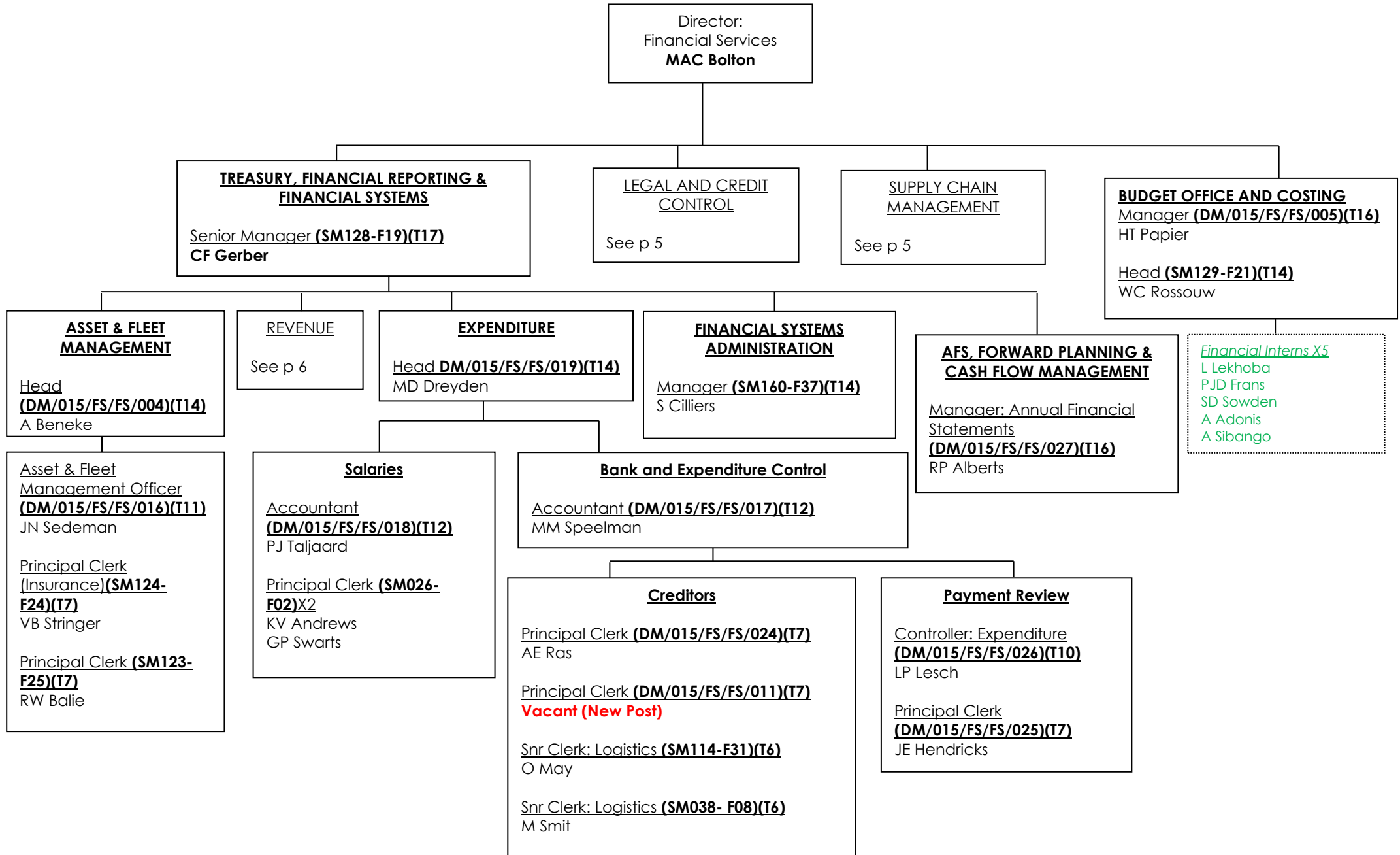
**CORPORATE SERVICES**



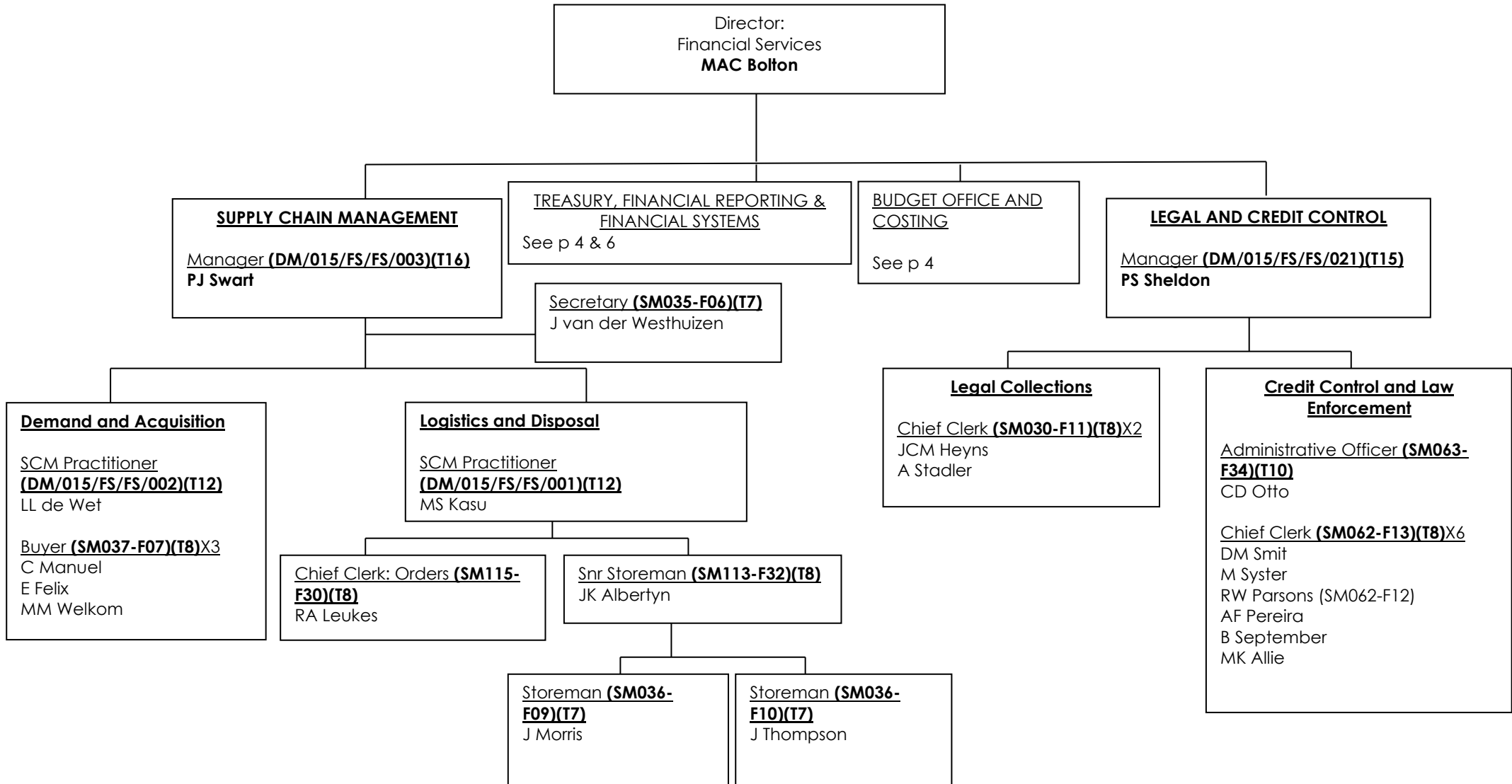
## CORPORATE SERVICES



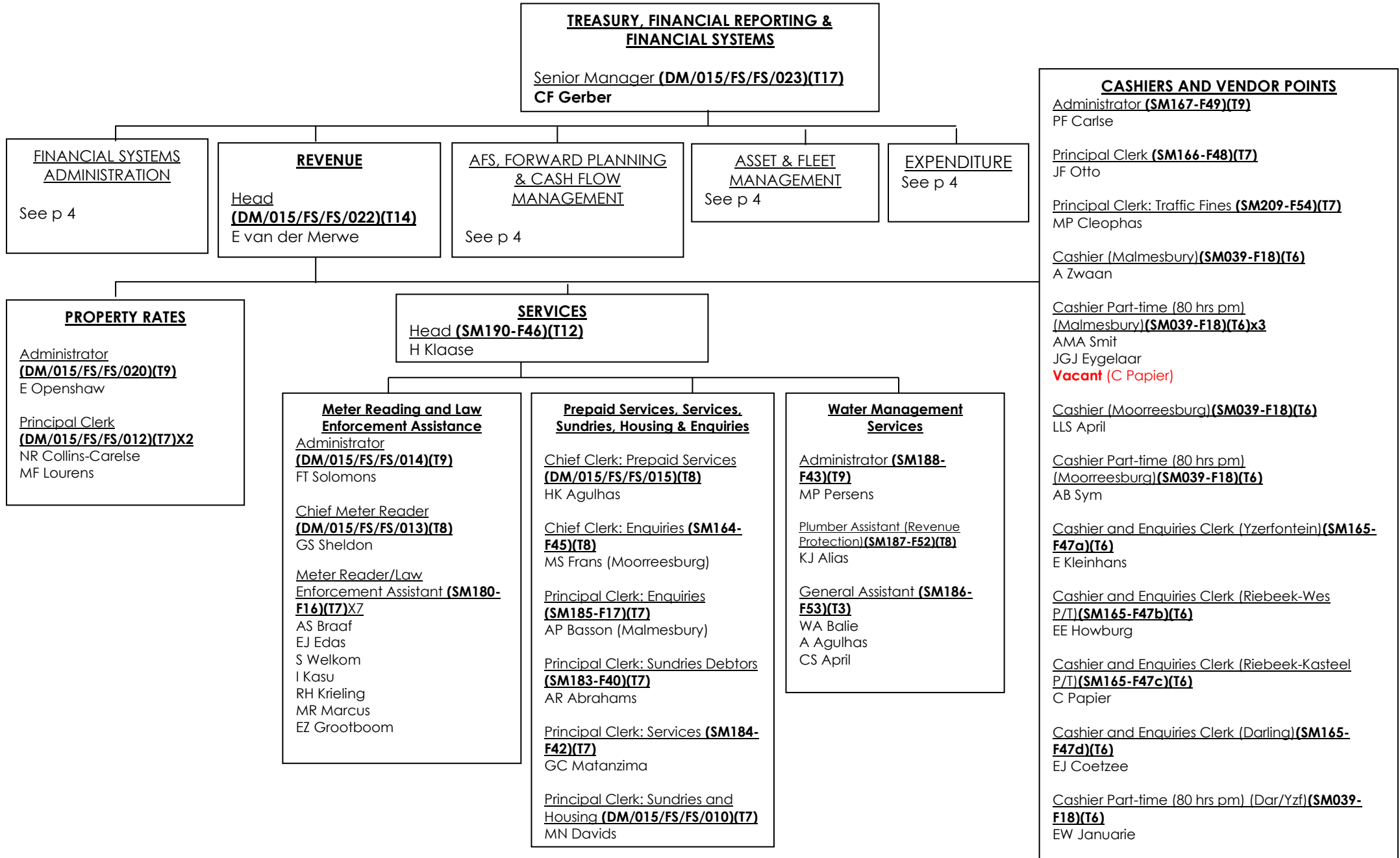
**FINANCIAL SERVICES**



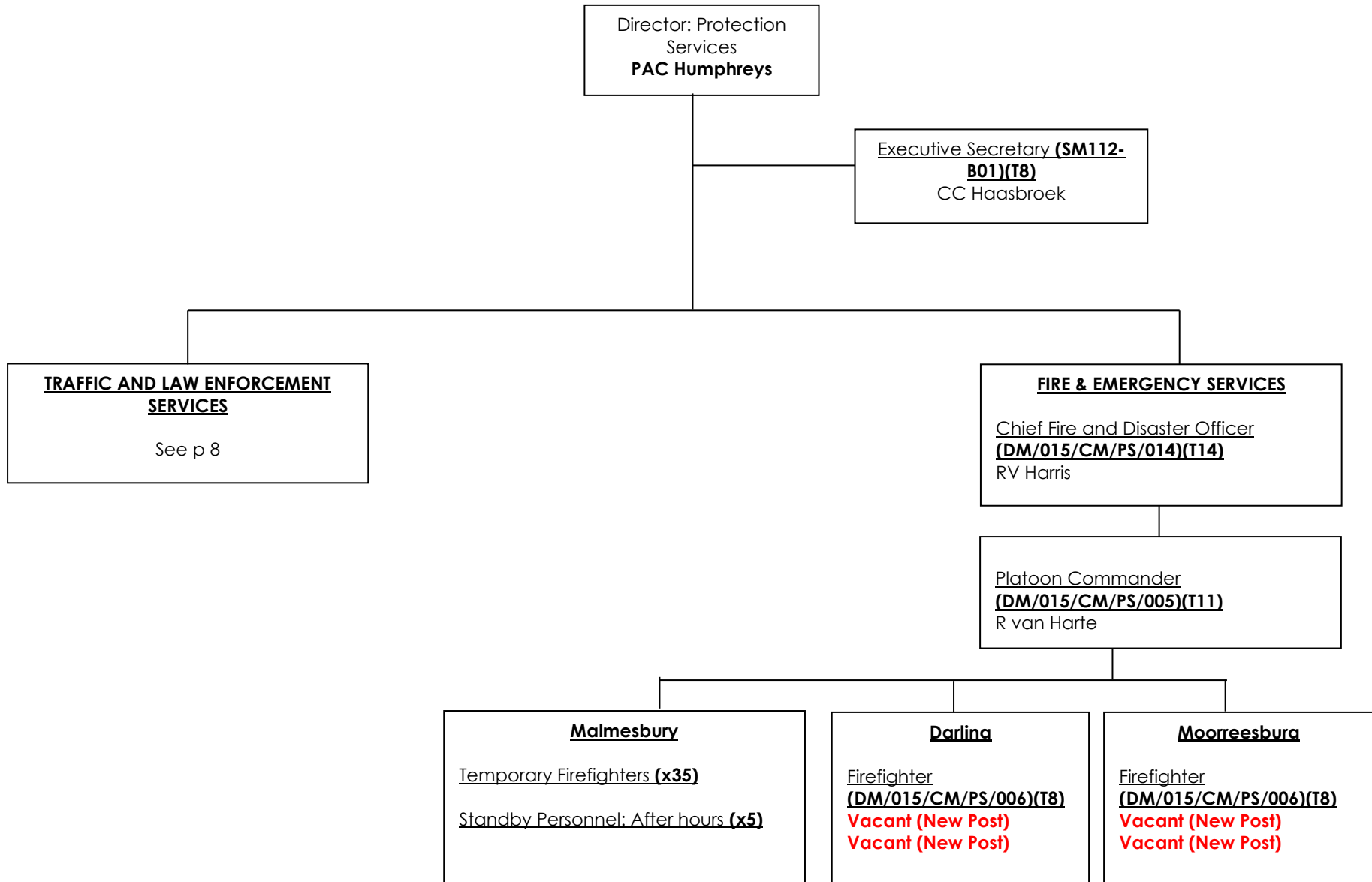
**FINANCIAL SERVICES**



## FINANCIAL SERVICES

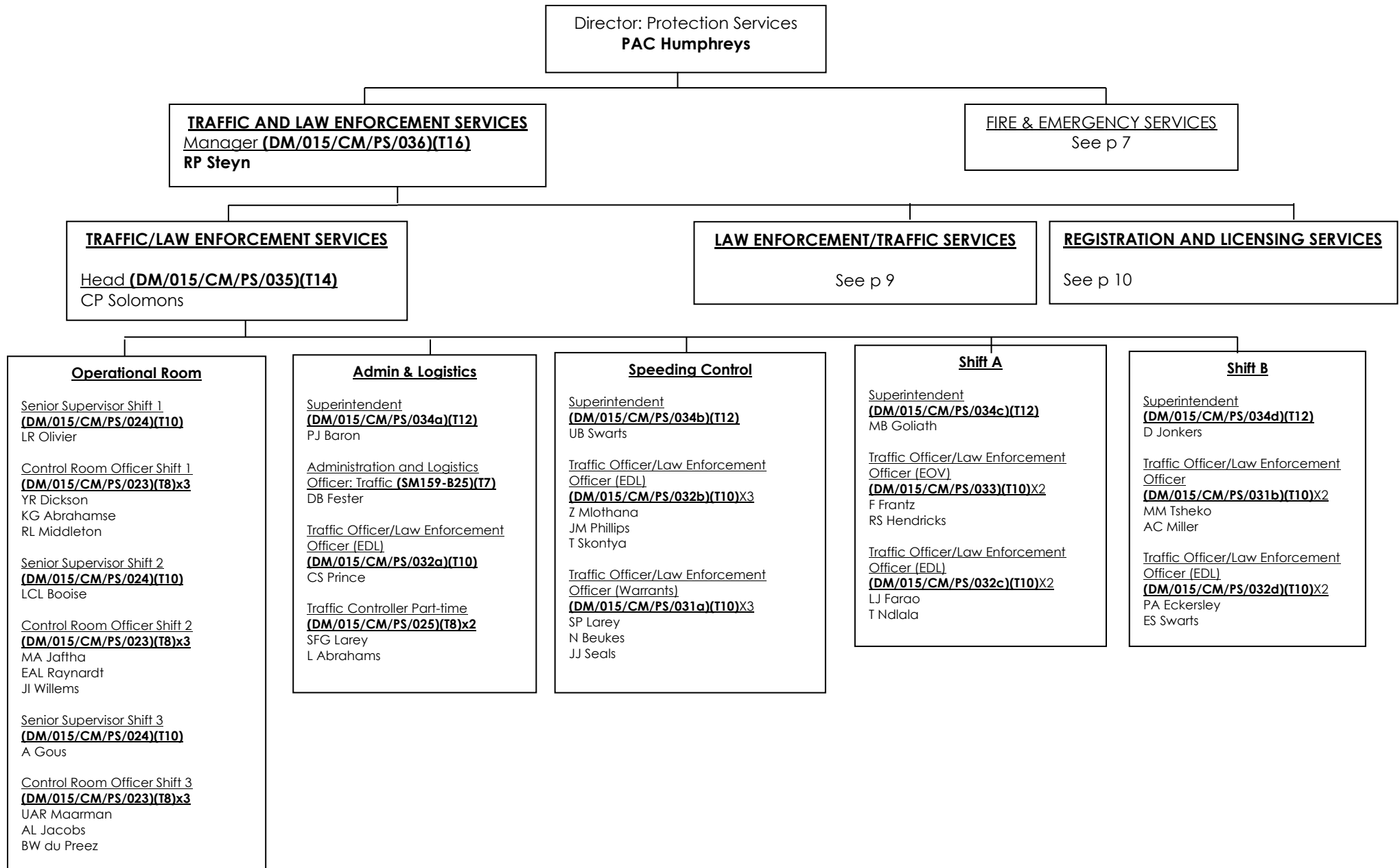


**PROTECTION SERVICES**





## PROTECTION SERVICES



**PROTECTION SERVICES**

Director: Protection Services  
**PAC Humphreys**

**TRAFFIC AND LAW ENFORCEMENT SERVICES**  
Manager **(SM109-B07)(T16)**  
**RP Steyn**

**FIRE & EMERGENCY SERVICES**  
See p 7

**TRAFFIC/LAW ENFORCEMENT SERVICES**

See p 8

**LAW ENFORCEMENT/TRAFFIC SERVICES**

Head **(DM/015/CM/PS/030)(T14)**  
**ND Matthys**

**REGISTRATION AND LICENSING SERVICES**

See p 10

**Malmesbury**

Regional Inspector  
**(DM/015/CM/PS/029a)(T12)**  
N Africa

Principal Inspector: Dog Unit  
**(DM/015/CM/PS/021)(T11)** Senior Inspector  
**(K9) (T11)**  
SC Botes

Traffic Officer: Law Enforcement/Dog Handler  
**(DM/015/CM/PS/022)(T10)X2**  
K Davids  
EZ Solomons

Inspector Law Enforcement/Traffic Officer  
**(DM/015/CM/PS/026b) (T10)**  
BO Matthee

Inspector Law Enforcement/Traffic Officer  
**(EDL) (DM/015/CM/PS/027b)(T10)X2**  
NO Breedekamp  
ED Goliath

Inspector Law Enforcement/Traffic Officer  
**(EOV) (DM/015/CM/PS/028) (T10)**  
A Papier

Law Enforcement Officer **(SM058-B03)(T9)**  
JH Willemse

**Moorreesburg**

Regional Inspector  
**(DM/015/CM/PS/029b)(T12)**  
MS Cloete

Principal Inspector: Dog Unit  
**(DM/015/CM/PS/021)(T11)**  
FG Herwels

Traffic Officer: Law Enforcement/Dog  
Handler **(DM/015/CM/PS/022)(T10)X2**  
JY Willemse  
B Herman

Inspector Law Enforcement/Traffic  
Officer **(DM/015/CM/PS/026c) (T10)**  
RY Booizen

Inspector Law Enforcement/Traffic  
Officer **(DM/015/CM/PS/026a)(T10)X2**  
AWJ Adonis  
AF Larey

**Darling**

Regional Inspector  
**(DM/015/CM/PS/029c)(T12)**  
MPJ Humphreys

Principal Inspector: Dog Unit  
**(DM/015/CM/PS/021)(T11)**  
**Vacant (unfunded)**

Traffic Officer: Law Enforcement/Dog  
Handler **(DM/015/CM/PS/022)(T10)X2**  
**Vacant (unfunded)**  
**Vacant (unfunded)**

Inspector Law Enforcement/Traffic  
Officer (EDL)  
**(DM/015/CM/PS/027a)(T10)**  
DC Baron

Inspector Law Enforcement/Traffic  
Officer **(DM/015/CM/PS/026b) (T10)**  
JP La Meyer

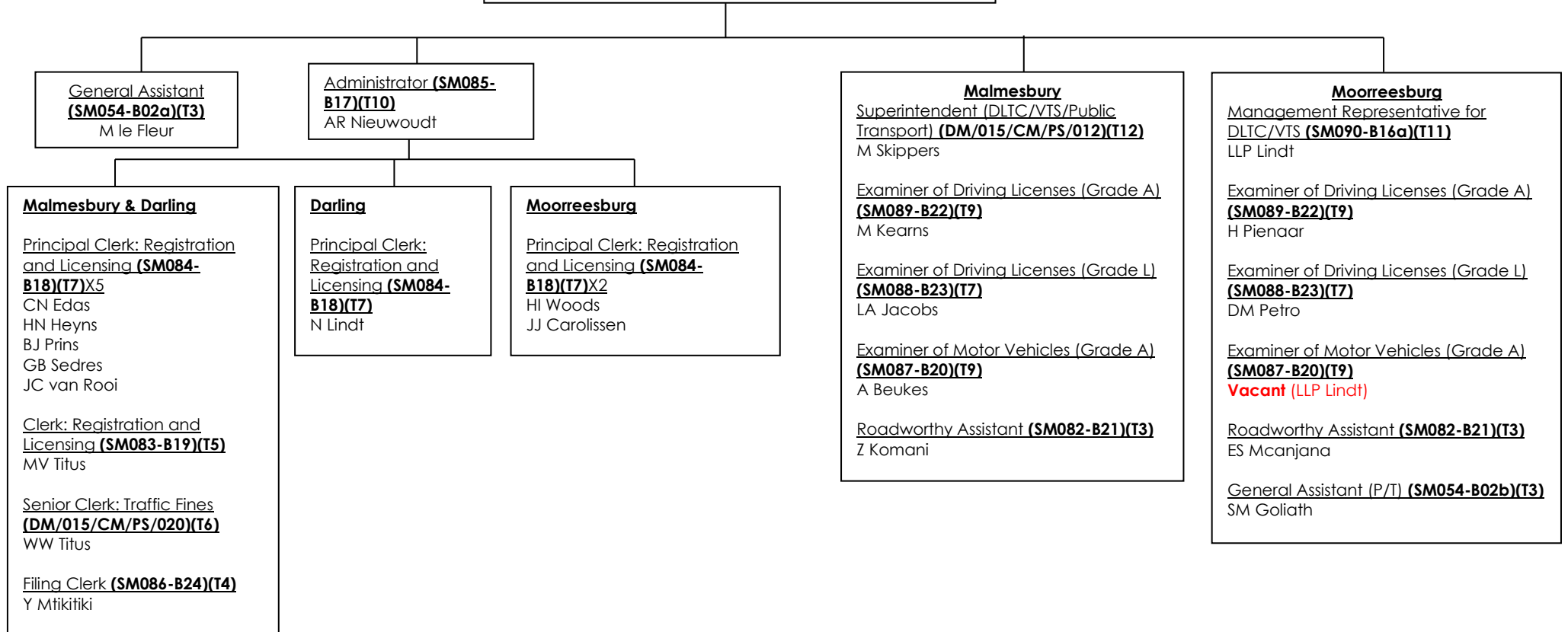
**Yzerfontein**

Law Enforcement/Traffic Officer  
**(\*Town Manager Yzerfontein)**  
**(SM102-B15)(T11)**  
C Lakey

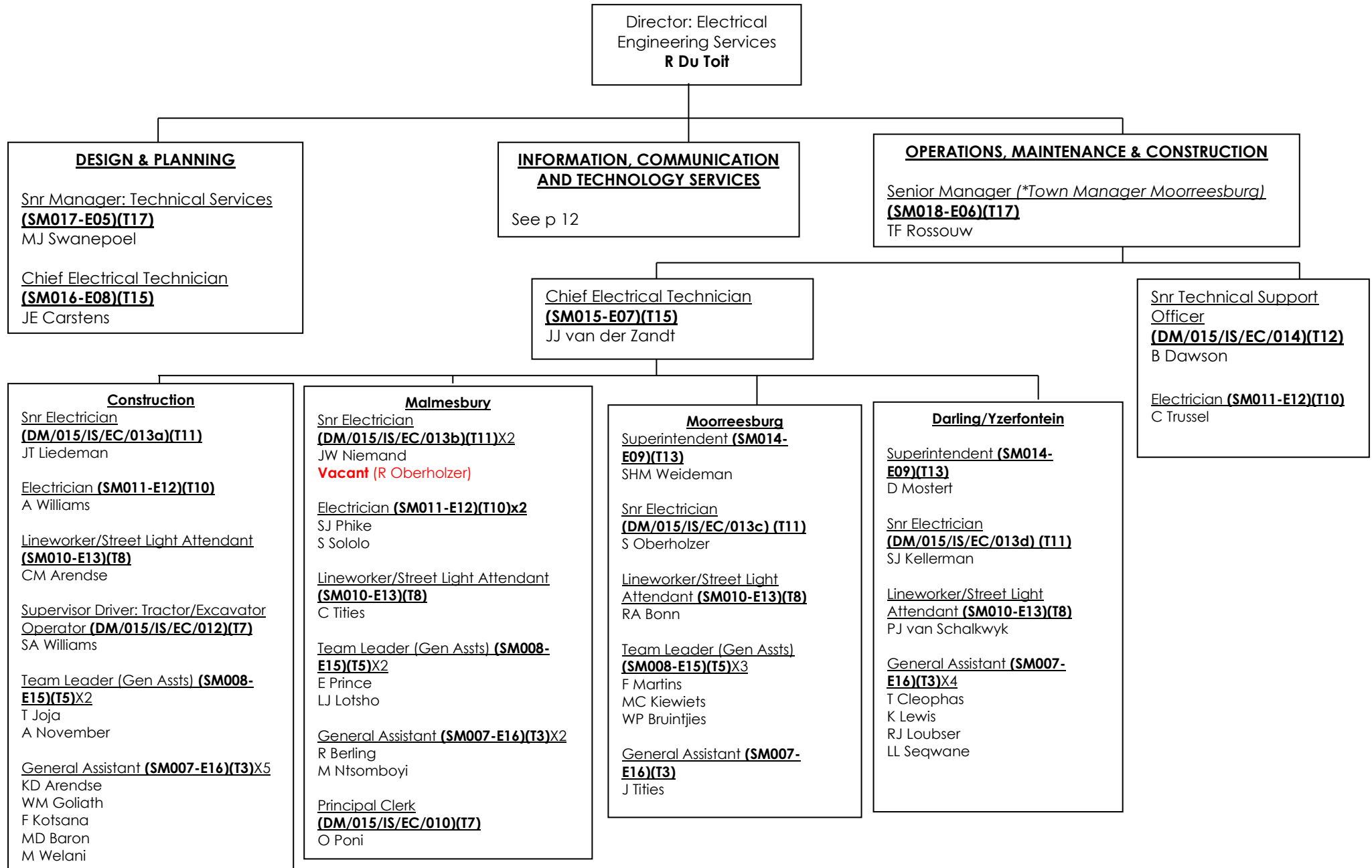
## PROTECTION SERVICES

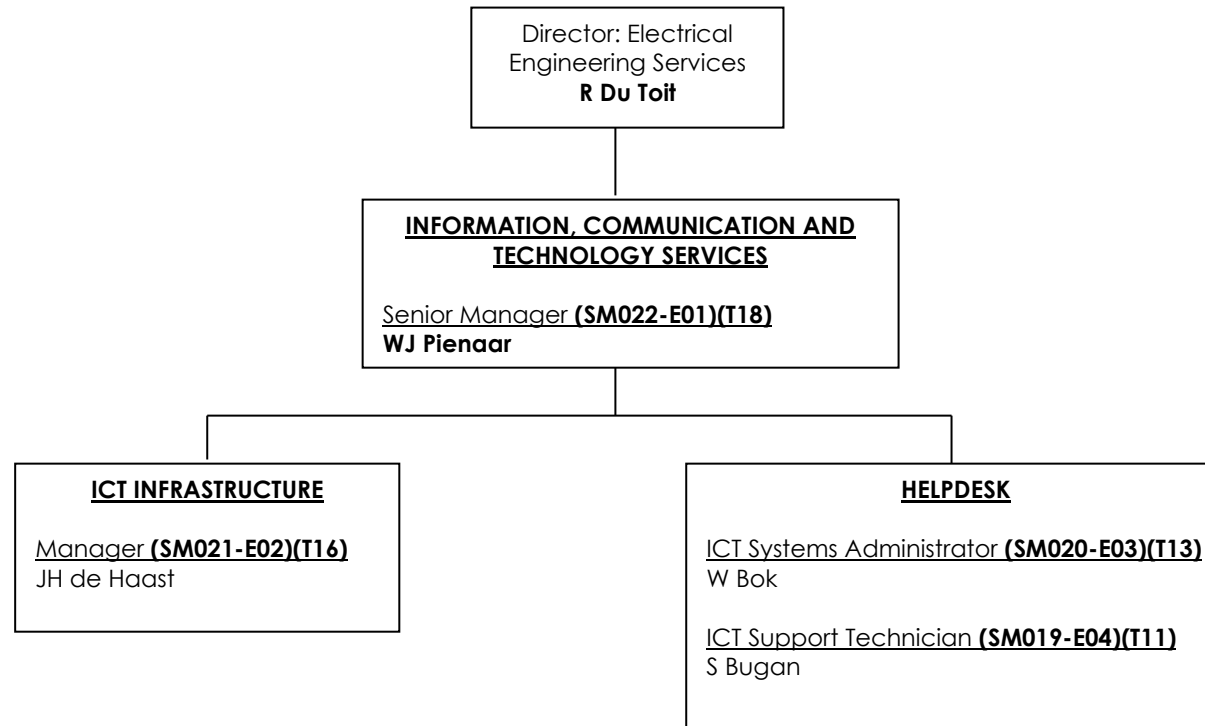
### REGISTRATION AND LICENSING SERVICES

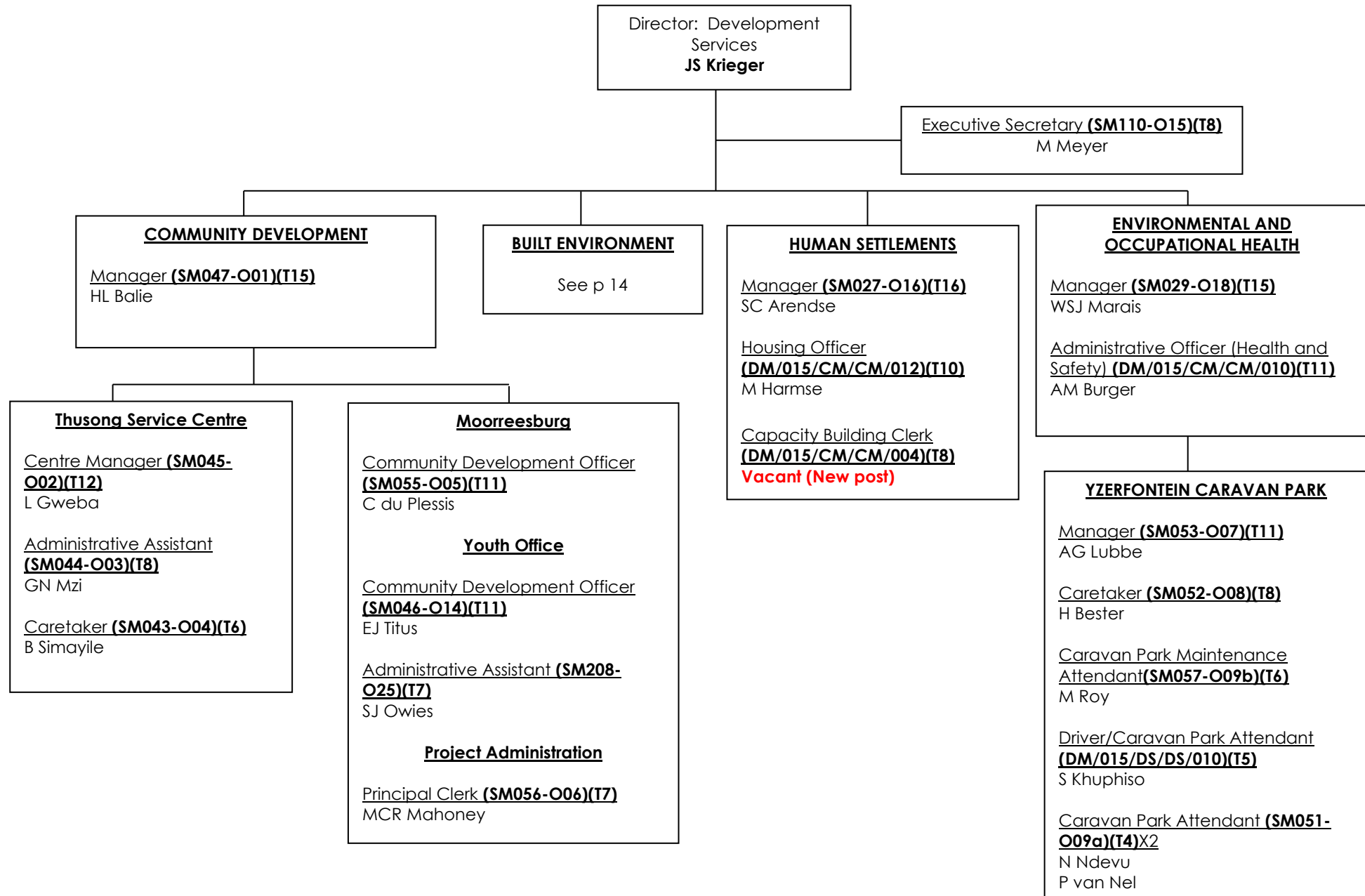
Head: Traffic Administration **(DM/015/CM/PS/013)(T14)**  
**HS Mouton**



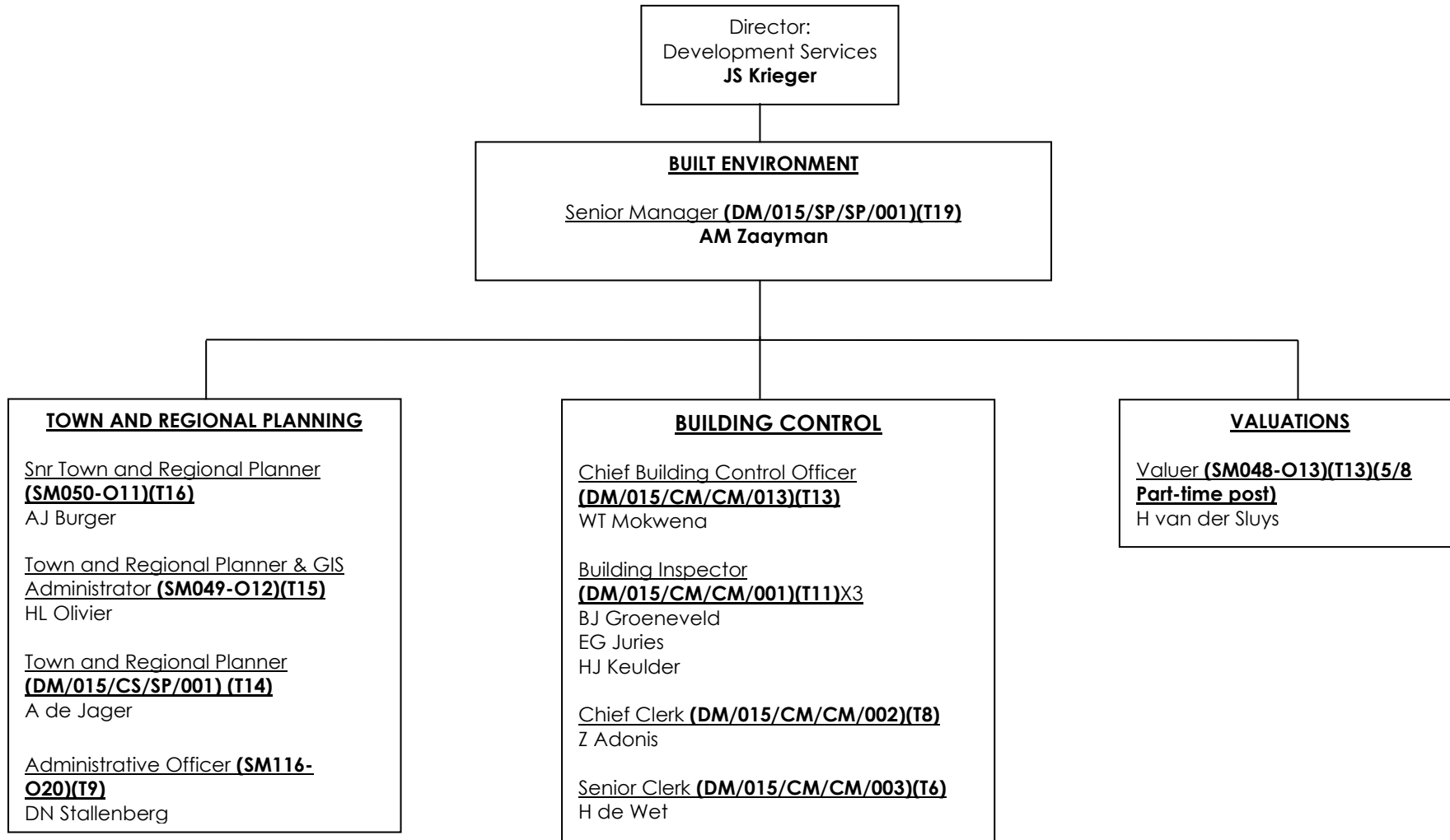
**ELECTRICAL ENGINEERING SERVICES**



**ELECTRICAL ENGINEERING SERVICES**

**DEVELOPMENT SERVICES**

**DEVELOPMENT SERVICES**



**CIVIL ENGINEERING SERVICES**

