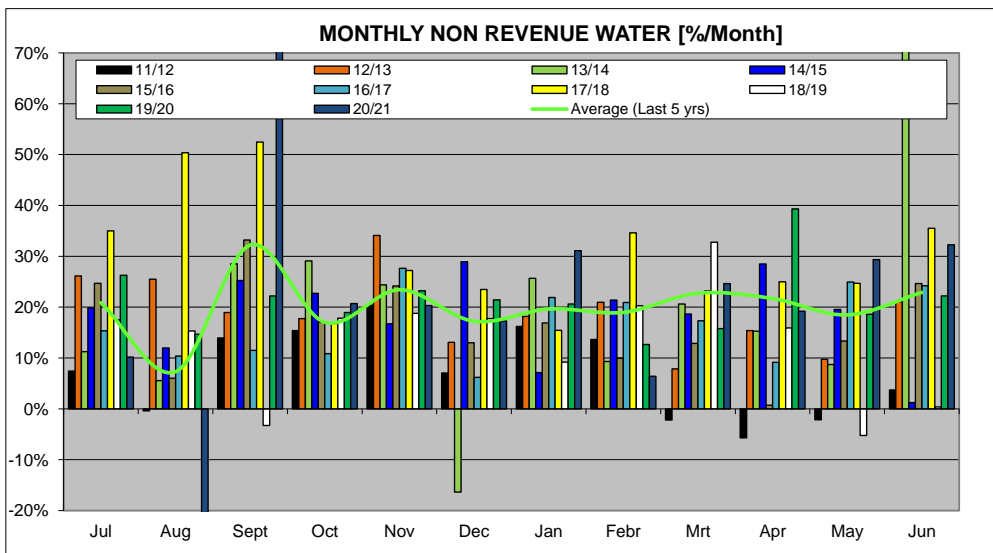
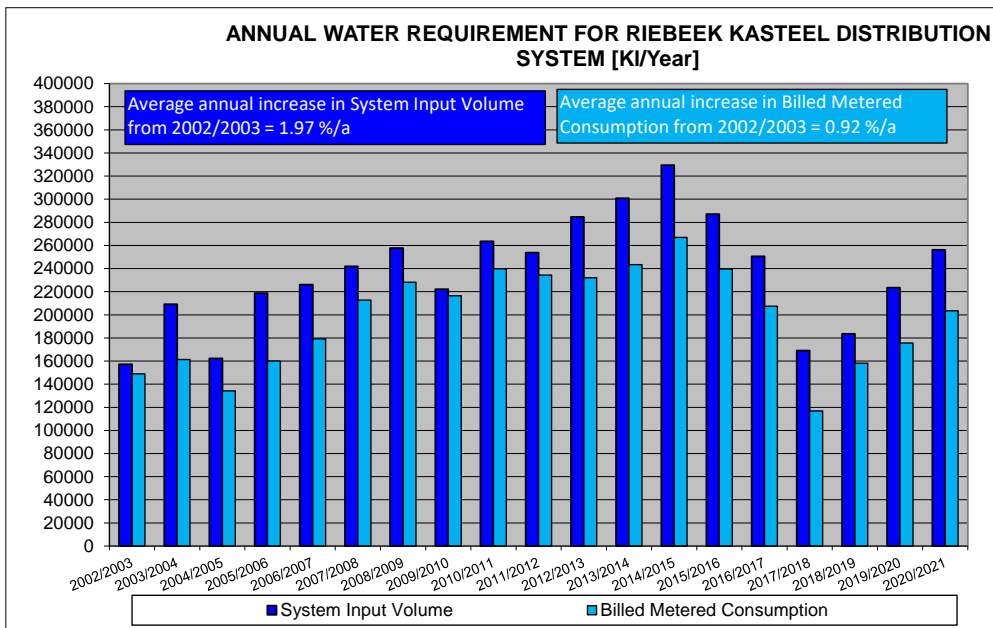
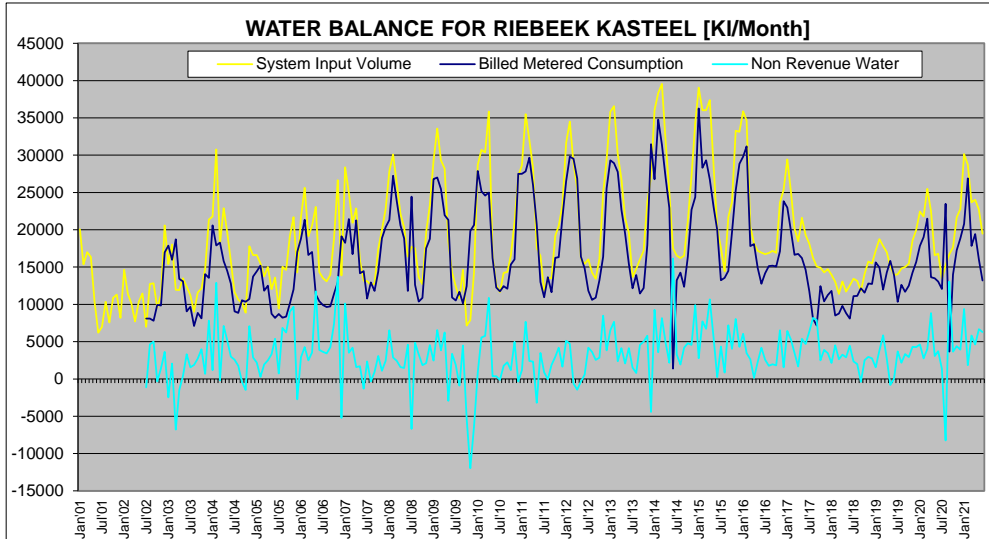


SWARTLAND MUNICIPALITY																			
Riebeeck Kasteel																			
Month	Year	TREATED WATER SUPPLY																	
		System Input Volume			Revenue Water			Non Revenue Water (NRW)											
		Treated Water from WTW	Billed Metered Consumption	Billed Un-metered Consumption	Monthly NRW	Monthly NRW	Annual NRW	Annual NRW	Unbilled Metered Consumption	Unbilled Un-metered Consumption	Apparent Losses			Real Losses		Monthly Water Losses	Monthly Water Losses	Annual Water Losses	Annual Water Losses
											Illegal Connections	Inaccurate Meters	Administrative Errors	Leaks, Reservoirs overflow, etc.					
[m³]	[m³]	[m³]	[m³]	[%]	[m³]	[%]	[m³]	[m³]	[m³]	[m³]	[m³]	[m³]	[m³]	[m³]	[m³]	[m³]	[m³]	[m³]	
[m³]	[m³]	[m³]	[m³]	[%]	[m³]	[%]	[m³]	[m³]	[m³]	[m³]	[m³]	[m³]	[m³]	[m³]	[m³]	[m³]	[m³]	[m³]	[m³]
Jan01	00/01	20061																	
Feb01		15367																	
Mar01		16899																	
Apr01		16349																	
May01		10331																	
Jun01	01/02	6207																	
Jul01		6991																	
Aug01		10346																	
Sep01		7594																	
Oct01		10871																	
Nov01	11310																		
Dec01	8199																		
Jan02	14636																		
Feb02	11382																		
Mar02	10128																		
Apr02	7712																		
May02	10331																		
Jun02	11443																		
Jul02	6991	8105	0	-1114	-15.9%			0	14	-23	-113	-56	-936	-1128	-16.1%				
Aug02	12737	8107	0	4630	36.4%			0	25	92	460	230	3822	4605	36.2%				
Sep02	12635	7816	0	5018	39.1%			0	26	100	499	250	4144	4993	38.9%				
Oct02	9600	9926	0	-19	-0.2%			0	19	-7	-35	-17	-287	-345	-3.8%				
Nov02	11266	9843	0	1423	12.6%			0	23	28	140	70	1162	1400	12.4%				
Dec02	20596	16963	0	3633	17.6%			0	41	72	359	180	2981	3592	17.4%				
Jan03	15998	17873	0	-2475	-16.1%			0	31	-50	-251	-125	-2080	-2508	-16.3%			7985	5.1%
Feb03	18812	16962	0	2055	11.4%	8299	5.3%	0	35	40	202	107	1676	2019	11.2%				
Mar03	11960	18732	0	-6772	-56.6%			0	24	-136	-680	-340	-5641	-6796	-56.8%				
Apr03	11927	13421	0	-1494	-12.5%			0	24	-30	-152	-76	-1260	-1518	-12.7%				
May03	13489	13095	0	394	2.9%			0	27	7	37	18	305	367	2.7%				
Jun03	12999	9073	0	3926	29.8%			0	25	66	330	165	2740	3301	26.8%				
Jul03	11233	9668	0	1565	13.9%			0	22	31	154	77	1280	1543	13.7%				
Aug03	8989	7115	0	1874	20.8%			0	18	37	186	93	1540	1856	20.6%				
Sep03	11608	8870	0	2738	23.6%			0	23	54	271	136	2253	2715	23.4%				
Oct03	12126	8139	0	3987	32.9%			0	24	79	396	198	3289	3983	32.7%				
Nov03	14745	14655	0	990	4.7%			0	29	13	66	33	548	681	4.8%				
Dec03	21362	13566	0	7806	36.5%			0	43	155	776	388	6444	7763	36.3%			47443	22.7%
Jan04	21788	20595	0	1193	5.5%			0	44	23	115	57	574	1149	5.3%				
Feb04	30782	17909	0	12873	41.8%			0	62	256	1281	641	10633	12811	41.8%				
Mar04	18107	18286	0	-179	-1.0%			0	36	-4	-22	-11	-179	-215	-1.2%				
Apr04	22899	15787	0	7112	31.1%			0	46	141	707	353	5865	7066	30.9%				
May04	19722	14504	0	5218	26.5%			0	39	104	518	259	4298	5179	26.3%				
Jun04	15781	12797	0	2984	18.9%			0	32	59	295	148	2451	2952	18.7%				
Jul04	11881	9070	0	2811	23.2%			0	23	51	257	128	2131	2588	22.0%				
Aug04	10636	8862	0	1774	16.7%			0	21	35	175	88	1455	1753	16.5%				
Sep04	10171	10539	0	-368	-3.6%			0	20	-8	-39	-19	-322	-388	-3.8%				
Oct04	8875	10343	0	-1468	-16.5%			0	18	-30	-149	-74	-1233	-1486	-16.7%				
Nov04	17793	10712	0	7081	39.8%			0	36	141	705	352	5848	7045	39.6%				
Dec04	16599	13736	0	2863	17.2%			0	33	57	283	141	2349	2830	17.0%				
Jan05	16633	14423	0	2210	13.3%			0	33	44	218	109	1807	2177	13.1%				
Feb05	15467	15190	0	277	1.8%			0	31	5	25	12	204	246	1.6%				
Mar05	13773	11842	0	1931	14.0%			0	28	38	190	95	1580	1903	13.8%				
Apr05	15010	12511	0	2499	16.6%			0	29	49	247	123	2040	2489	16.4%				
May05	12043	8732	0	3311	27.5%			0	24	66	329	164	2728	3287	27.3%				
Jun05	13593	8196	0	5397	39.7%			0	27	107	537	268	4487	5370	39.6%				
Jul05	9440	8699	0	741	7.8%			0	19	14	72	36	599	722	7.6%				
Aug05	15653	8204	0	6849	43.5%			0	34	136	682	341	5680	6819	45.3%				
Sep05	14595	8360.8	0	6234	42.7%			0	29	124	621	310	5150	6205	42.5%				
Oct05	19150	10109.37	0	9041	47.2%			0	38	180	900	450	7472	9002	47.0%				
Nov05	21700	12011.83	0	9688	44.6%			0	43	193	964	482	8005	9645	44.4%				
Dec05	14293	17032	0	-2739	-19.2%			0	29	-55	-277	-138	-2297	-2768	-19.4%				
Jan06	21695	18796	0	2899	13.4%			0	43	57	286	143	2370	2855	13.2%			58223	26.6%
Feb06	25621	21338	0	4283	16.7%			0	51	85	423	212	3513	4232	16.5%				
Mar06	19136	16633	0	2503	13.1%			0	38	49	247	123	2046	2465	12.9%				
Apr06	20568	17034	0	3534	17.2%			0	41	70	349	175	2899	3493	17.0%				
May06	23071	11331	0	11740	50.9%			0	46	234	1169	585	9706	11694	50.7%				
Jun06	14329	10442	0	3887	27.1%			0	29	77	386	193	3202	3858	26.9%				
Jul06	13526	9904	0	3622	26.8%			0	27	72	359	180	2984	3595	26.6%				
Aug06	13092	9650	0	3442	26.3%			0	26	68	342	171	2635	3416	26.1%				
Sep06	13864	9719	0	4145	29.9%			0	28	84	422	211	3600	4217	30.2%				
Oct06	18837	11422	0	7415	39.4%			0	38	148	738	369	6123	7377	39.2%				
Nov06	26663	12976	0	13687	51.3%			0	53	273	1363	682	11316	13633	51.1%				
Dec06	13883	19128	0	-5245	-37.8%			0	28	-105	-527	-264	-4376	-5273	-38.0%				
Jan07	26869	16568	0	10311	38.6%			0	57	201	1006	503	8345	10054	38.4%				
Feb07	24807	21430	0	3377	14.1%			0	47	84	442	221	3600	4421	15.0%				
Mar07	20932	16732	0	4200	20.1%			0	42	83	416	208	3452	4158	19.9%				
Apr07	22863	21257	0	1606	7.0%			0	46	31	156	78	1295	1560	6.8%				
May07	16886	14167	0	2719	16.0%			0	32	34	169	84	1400	1667	10.9%				
Jun07	13181	14471	0	-1290	-9.6%			0	29	-26	-132	-66	-1093	-1316	-10.0%				
Jul07	13127	10769	0	2358	18.0%			0	26	47	233	117	1935	2332	17.8%				
Aug07	12606	12930	0	-324	-2.6%			0	25	-7	-35	-17	-290	-349	-2.8%				
Sep07	12759	11912	0	847	7.4%			0	26	18	92	46	765	921	7.2%				
Oct07	17466	14399	0	3067	17.6%			0	33	60	303	152	2517	3033	17.4%				
Nov07	19970	18876	0	1094	5.5%			0	40	21	105	53	875	1054	5.3%				
Dec07	22796	20357	0	2439	10.7%			0	46	48	239	120	1986	2393	10.5%				
Jan08	27845	21317	0	6528	23.4%			0	56	129	647	324	5372	6472	23.2%			28573	11.8%
Feb08	30989	27233	0	3756	12.1%			0	60	56	281	140	2329	2806	9.3%				
Mar08	26287	23852	0	2435	9.3%			0	53	48	238	119	1977	2382	9.1%				
Apr08	22169	20577	0	1															

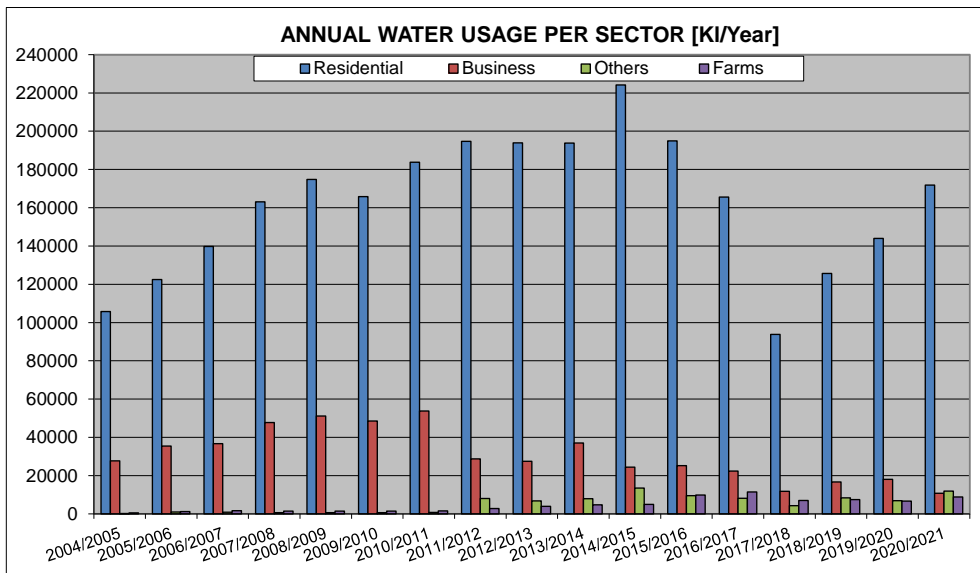
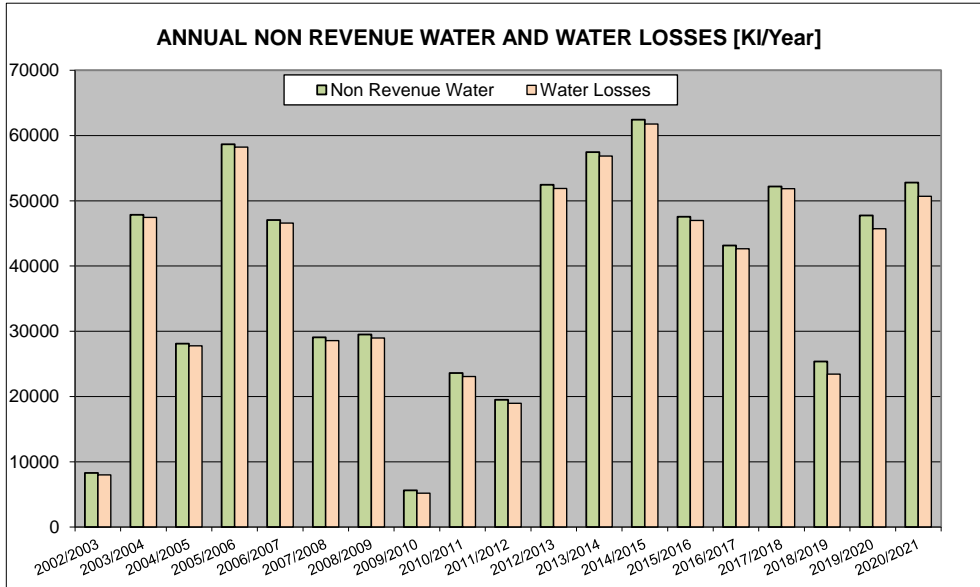
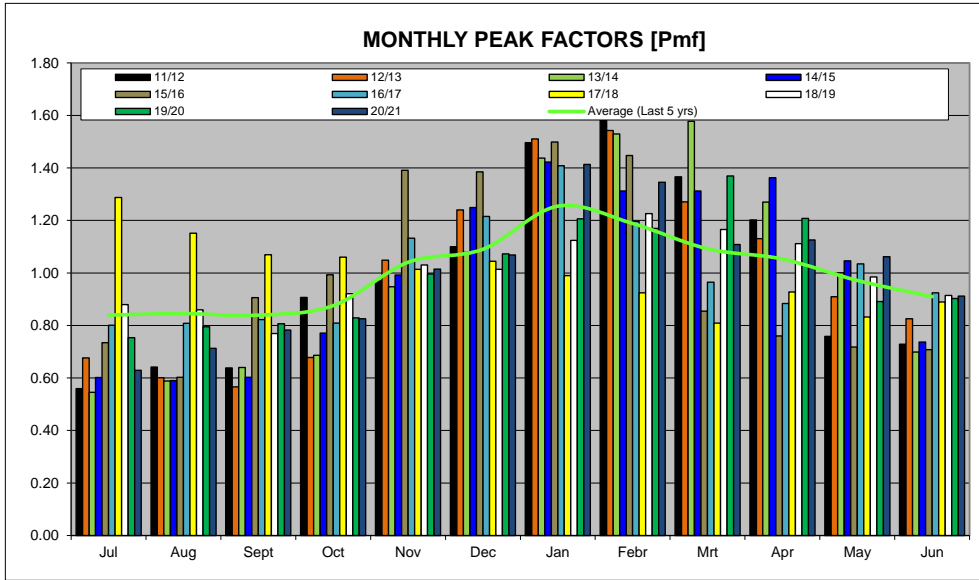
SWARTLAND MUNICIPALITY																					
Riebeeck Kasteel																					
TREATED WATER SUPPLY																					
Month	Year	System Input Volume			Revenue Water		Non Revenue Water (NRW)														
		Treated Water from WTW	Billed Metered Consumption	Billed Un-metered Consumption	Monthly NRW	Monthly NRW	Annual NRW	Annual NRW	Unbilled Metered Consumption	Unbilled Un-metered Consumption	Apparent Losses			Real Losses	Monthly Water Losses	Monthly Water Losses	Annual Water Losses	Annual Water Losses			
											Illegal Connections	Inaccurate Meters	Administrative Errors						Estimated Percentages (Variable)		
																			2%	10%	5%
[m³]	[m³]	[m³]	[m³]	[%]	[m³]	[%]	[m³]	[m³]	[m³]	[m³]	[m³]	[m³]	[m³]	[m³]	[m³]	[m³]	[m³]				
Jul14		16522	13239	0	3283	19.9%			33	65	325	162	2697	3250	19.7%						
Aug14		16209	14267	0	1942	12.0%			34	38	191	95	1585	1910	11.8%						
Sep14		16537	12362	0	4175	25.2%			33	83	414	207	3438	4142	25.0%						
Oct14		21155	16351	0	4804	22.7%			42	95	476	238	3952	4762	22.5%						
Nov14		27250	22898	0	4352	16.7%			55	90	451	225	3741	4508	16.5%						
Dec14		34292	24378	0	9914	28.9%			69	197	985	492	8172	9845	28.7%						
Jan15		39051	36259	0	2792	7.1%	62430	19.0%	78	54	271	136	2253	2714	6.9%	61771	18.8%				
Feb15		36032	28322	0	7710	21.4%			72	153	764	382	6338	7638	21.2%						
Mar15		36039	29307	0	6732	18.7%			72	133	665	333	5520	6651	18.5%						
Apr15		37404	26746	0	10658	28.5%			75	212	1058	529	8784	10583	28.3%						
May15		28728	23111	0	5617	19.6%			57	111	556	278	4614	5560	19.4%						
Jun15		20230	19280	0	250	1.2%			40	21	21	10	210	210	1.0%						
Jul15		17297	13229	0	4068	23.7%			35	86	430	215	3971	4303	24.9%						
Aug15		14421	13551	0	870	6.0%			29	17	84	42	698	841	5.8%						
Sep15		21686	14482	0	7204	33.2%			43	143	716	358	5943	7161	33.0%						
Oct15		23759	19706	0	4053	17.1%			48	80	401	200	3325	4059	18.8%						
Nov15		33295	25241	0	8054	24.2%			62	160	798	399	6921	7977	24.0%						
Dec15		33145	28838	0	4307	13.0%	47555	16.6%	66	85	424	212	3520	4241	12.8%	46981	16.4%				
Jan16		35989	29808	0	6090	16.9%			72	120	599	299	4970	5988	16.7%						
Feb16		34641	31190	0	3451	10.0%			69	68	338	169	2807	3382	9.8%						
Mar16		20455	17922	0	2533	12.4%			41	52	229	130	2151	2592	12.7%						
Apr16		18198	18069	0	129	0.7%			38	2	9	5	77	93	0.5%						
May16		17168	14878	0	2290	13.3%			34	45	228	113	1872	2256	13.1%						
Jun16		16949	12771	0	4178	24.4%			34	83	414	207	3438	4142	24.4%						
Jul16		16932	14161	0	2771	16.4%			33	51	264	127	2106	2538	15.0%						
Aug16		16886	15130	0	1756	10.4%			34	34	172	86	1429	1722	10.2%						
Sep16		17169	15197	0	1972	11.5%			34	39	194	97	1608	1938	11.3%						
Oct16		16903	15088	0	1815	10.7%			36	89	484	242	3849	4637	24.0%						
Nov16		23942	17110	0	6832	27.8%			47	130	648	324	5392	6486	27.4%						
Dec16		25384	23812	0	1572	6.2%	43154	17.2%	51	30	152	76	1263	1521	6.0%	42653	17.0%				
Jan17		29418	22973	0	6445	21.9%			59	128	639	319	5301	6386	21.7%						
Feb17		28041	20996	0	5222	20.9%			50	104	518	259	4297	5177	20.7%						
Mar17		20146	16659	0	3487	17.3%			49	69	349	172	2881	3447	17.1%						
Apr17		18449	16763	0	1686	9.1%			37	68	333	165	1369	1649	8.9%						
May17		21616	16221	0	5395	25.0%			43	107	535	268	4442	5352	24.8%						
Jun17		18308	14936	0	4616	34.2%			38	89	484	232	3849	4637	24.0%						
Jul17		18738	11799	0	6939	36.8%			36	126	631	316	5240	6933	34.8%						
Aug17		16227	8055	0	8172	50.4%			32	163	814	407	6756	8140	50.2%						
Sep17		15070	7166	0	7904	52.4%			30	157	787	394	6535	7874	52.2%						
Oct17		14636	12434	0	2202	16.8%			30	49	247	124	2052	2472	16.8%						
Nov17		14285	10399	0	3886	27.2%			29	77	386	193	3202	3887	27.0%						
Dec17		14715	11259	0	3456	23.5%	52180	30.9%	29	69	343	171	2844	3427	23.3%	51842	30.7%				
Jan18		13949	11797	0	2152	15.4%			28	42	212	106	1763	2124	15.2%						
Feb18		13617	8510	0	4507	34.6%			26	90	448	224	3719	4481	34.4%						
Mar18		13401	8754	0	4646	34.7%			23	52	263	131	2176	2622	23.0%						
Apr18		13067	9802	0	3265	25.0%			26	65	324	162	2688	3239	24.8%						
May18		11721	8629	0	2892	24.7%			23	57	287	143	2381	2869	24.5%						
Jun18		12535	8685	0	3850	30.6%			29	88	454	221	3673	4469	35.6%						
Jul18		13445	11091	0	2354	17.5%			29	44	220	110	1822	2165	16.3%						
Aug18		13144	11131	0	2013	15.3%			158	37	185	93	1639	1855	14.1%						
Sep18		11786	12150	0	384	3.3%			156	-11	-24	-27	1448	1448	12.3%						
Oct18		14083	11372	0	2511	17.8%			160	47	238	119	1951	2351	16.7%						
Nov18		15751	12796	0	2955	18.8%			164	56	279	140	2317	2791	17.7%						
Dec18		15495	12745	0	2750	17.7%			163	52	299	129	2147	2597	16.7%						
Jan19		17189	15612	0	1576	9.2%			166	28	141	71	1171	1411	8.2%	23426	12.8%				
Feb19		16743	14944	0	1799	20.3%			169	73	363	181	3012	3630	19.4%						
Mar19		17815	11976	0	5839	32.6%			168	113	567	284	4707	5671	31.8%						
Apr19		16988	14288	0	2700	15.9%			166	51	253	127	2103	2534	14.9%						
May19		15055	15842	0	767	5.2%			162	-19	-95	-47	-788	-949	-6.3%						
Jun19		13972	13922	0	50	0.4%			160	-2	-11	-5	91	-110	-0.9%						
Jul19		14021	10335	0	3686	26.3%			160	71	353	176	2927	3686	26.1%						
Aug19		14796	12628	0	2168	14.7%			162	40	201	100	1665	2006	13.6%						
Sep19		15009	11679	0	3330	22.2%			162	63	317	158	2629	3168	21.1%						
Oct19		15439	12512	0	2927	19.0%			163	55	276	138	2294	2754	17.8%						
Nov19		16557	14245	0	2312	13.9%			169	83	414	207	3439	4143	22.3%						
Dec19		19989	15991	0	4278	21.4%			172	82	411	205	3408	4108	20.8%						
Jan20		22460	16531	0	4629	20.6%	47762	21.4%	167	89	445	223	3696	4452	19.8%	45732	20.5%				
Feb20		21776	19022	0	2754	12.6%			158	52	258	129	2140	2579	11.8%						
Mar20		25500	21478	0	4022	15.8%			183	77	384	192	3186	3839	15.1%						
Apr20		22483	19644	0	2839	12.6%			177	173	866	433	7189	8662	38.5%						
May20		16594	13509	0	3085	18.6%			165	58	292	146	2423	2920	17.8%						
Jun20		16891	13069	0	3722	22.2%			168	71	357	178	2960	3566	21.2%						
Jul20		13427	12362	0	1065	7.9%			160	24	121	60	1001	1208	9.0%						
Aug20		15223	23469	0	-8246	-54.2%			162	-168	-841	-420	-6979	-8408	-55.2%						
Sep20		16715	3655	0	13060	78.1%			165	258	1289	645	10703	12895	77.1%						
Oct20		17634	13982	0	3652	20.7%			167	89	445	223	3696	4452	19.8%						
Nov20		21881	17258	0	4623	21.1%			175	85	423	211	3509	4227	19.3%						
Dec20		22808	18870	0	3938	17.3%			178	75	378	188	3121	3761	16.5%						
Jan21		30770	20182	0	10588	34.4%			188	103	508	254	4080	5080	30.5%						
Feb21		28720	26877	0	1843	6.4%			189	83	415	207	3439	4143	22.3%						
Mar21		23670	17839	0	5831	24.6%			179	113	565	283	4691	5652	23.9%						
Apr21		24340	19425	0	4915	19.2%			186	89	444	222	3681	4435	18.4%						
May21		22677	16017	0	6660	29.4%			177	130	648	324	5390	6482	28.8%						
Jun21		19473	13193	0	6280	32.2%			171	122	611	305	5070	6109	31.4%						

ANNUAL TOTALS																				
Year	System Input Volume			Revenue Water		Non Revenue Water (NRW)														
	Treated Water from WTW	Billed Metered Consumption	Billed Un-metered Consumption	Monthly NRW	Monthly NRW	Annual NRW	Annual NRW	Unbilled Metered Consumption	Unbilled Un-metered Consumption	Apparent Losses			Real Losses	Monthly Water Losses	Monthly Water Losses	Annual Water Losses	Annual Water Losses			
										Illegal Connections	Inaccurate Meters	Administrative Errors						Estimated Percentages (Variable)		

**WATER BALANCE AND USAGE FOR RIEBEEK KASTEEL DISTRIBUTION SYSTEM**



**WATER BALANCE AND USAGE FOR RIEBEEK KASTEEL DISTRIBUTION SYSTEM**



**WATER BALANCE AND USAGE FOR RIEBEEK KASTEEL DISTRIBUTION SYSTEM**

