

SWARTLAND MUNICIPALITY													
Yzerfontein													
Month	Year	BULK WATER SUPPLY				TREATED WATER SUPPLY				TOTALS (ONLY NETWORK NRW)			
		Raw Water Supply	System Input Volume	Monthly NRW [m³]	Monthly NRW [%]	System Input Volume	Billed Metered Consumption	Monthly NRW [m³]	Monthly NRW [%]	Monthly NRW [m³]	Monthly NRW [%]	Annual NRW [m³]	Annual NRW [%]
Jul12	12/13					15548	13375	2173	14.0	2173	14.0		
Aug12						15399	11479	3920	25.5	3920	25.5		
Sep12						15093	14829	284	1.7	284	1.7		
Oct12						21127	17152	3975	18.8	3975	18.8		
Nov12						26038	21482	4556	17.5	4556	17.5		
Dec12						31490	36660	-5170	-16.4	-5170	-16.4	22302	7.1%
Jan13						51120	43437	7683	15.0	7683	15.0		
Feb13						35497	28595	6902	19.4	6902	19.4		
Mar13						29385	30503	-1118	-3.8	-1118	-3.8		
Apr13						29759	29096	662	2.2	662	2.2		
May13						22337	29716	-6781	-29.6	-6781	-29.6		
Jun13						20031	14795	5236	26.1	5236	26.1		
Jul13	13/14				15055	14323	732	4.9	732	4.9			
Aug13					15981	15161	710	4.5	710	4.5			
Sep13					16185	12007	4178	25.8	4178	25.8			
Oct13					18977	15990	3087	16.3	3087	16.3			
Nov13					26549	25785	764	3.0	764	3.0			
Dec13					27064	32488	-5404	-20.0	-5404	-20.0	6907	2.2%	
Jan14					51161	61688	-10527	-20.6	-10527	-20.6			
Feb14					33024	34124	-297	-0.9	-297	-0.9			
Mar14					32151	30063	2088	6.4	2088	6.4			
Apr14					30536	28533	4003	13.1	4003	13.1			
May14					27290	21620	5669	20.7	5669	20.7			
Jun14					19046	16163	1923	10.7	1923	10.7			
Jul14	14/15				17538	12031	5507	31.4	5507	31.4			
Aug14					16625	15050	1575	9.5	1575	9.5			
Sep14					19975	15817	4158	20.8	4158	20.8			
Oct14					25805	27696	-1890	-7.3	-1890	-7.3			
Nov14					33205	48988	-15783	-47.5	-15783	-47.5	34235	9.3%	
Dec14					41649	36059	5590	13.4	5590	13.4			
Jan15					52420	42605	9815	18.7	9815	18.7			
Feb15					37535	31081	6454	17.2	6454	17.2			
Mar15					34710	28842	5868	16.9	5868	16.9			
Apr15					39054	29807	9247	23.7	9247	23.7			
May15					28010	24470	3540	12.6	3540	12.6			
Jun15					20955	20771	184	0.8	184	0.8			
Jul15	15/16				19352	14268	3084	15.8	3084	15.8			
Aug15					17083	16998	85	0.5	85	0.5			
Sep15					22327	20061	2266	10.1	2266	10.1			
Oct15					26808	24542	2266	8.5	2266	8.5			
Nov15					35620	31230	4390	12.3	4390	12.3			
Dec15					35516	34564	962	2.7	962	2.7			
Jan16					48106	44796	3310	6.9	3310	6.9			
Feb16					37682	28932	10750	28.5	10750	28.5	43238	13.6%	
Mar16					18890	14061	4829	25.6	4829	25.6			
Apr16					21960	17427	4533	20.6	4533	20.6			
May16					16465	15368	3097	16.8	3097	16.8			
Jun16					15230	11524	3706	24.3	3706	24.3			
Jul16	16/17				15704	12928	2776	17.7	2776	17.7			
Aug16					15204	13602	1602	11.8	1602	11.8			
Sep16					17173	13441	3732	21.7	3732	21.7			
Oct16					17452	15569	1883	10.8	1883	10.8			
Nov16					30121	248573	5665	24.0	5665	24.0			
Dec16					26909	27677	-1068	-4.0	-1068	-4.0	33577	13.5%	
Jan17					36703	30988	6005	16.4	6005	16.4			
Feb17					22746	19341	3405	15.0	3405	15.0			
Mar17					20157	15014	5043	25.1	5043	25.1			
Apr17					18090	20454	-2364	-13.1	-2364	-13.1			
May17					19505	14910	4595	23.6	4595	23.6			
Jun17					14342	15538	1893	12.6	1893	12.6			

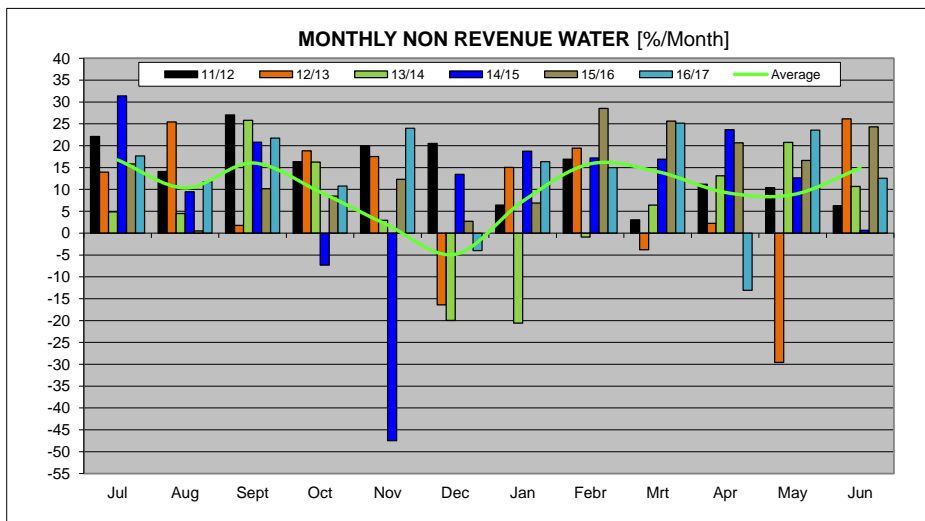
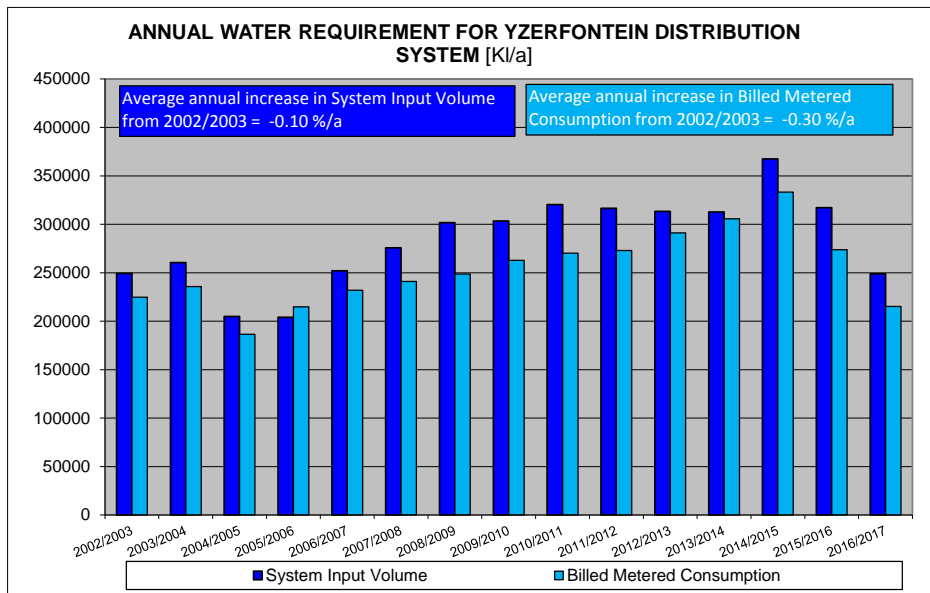
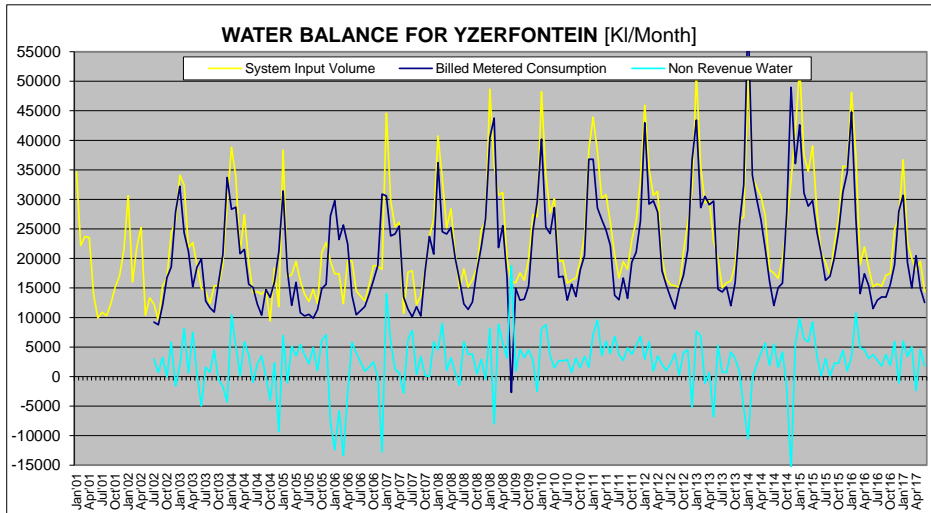
ANNUAL TOTALS				
Year	System Input Volume	Billed Metered Consumption	NRW m³	NRW %
2001/2002	204890			
2002/2003	249211	224660	24551	9.9%
2003/2004	260440	235822	24618	9.5%
2004/2005	204773	188419	18354	9.0%
2005/2006	203059	214877	-10818	-5.4%
2006/2007	251914	231937	19977	7.9%
2007/2008	275702	241062	34650	12.6%
2008/2009	301621	248573	53048	17.6%
2009/2010	303482	262708	40776	13.4%
2010/2011	320386	270159	50227	15.7%
2011/2012	316852	272941	43811	13.8%
2012/2013	313423	291151	22302	7.1%
2013/2014	312719	305812	6907	2.2%
2014/2015	367432	333187	34235	9.3%
2015/2016	317029	273801	43238	13.6%
2016/2017	248845	215268	33577	13.5%

Water Balance Components		Water Balance Volumes					
Component	Units	2011/2012	2012/2013	2013/2014	2014/2015	2015/2016	2016/2017
Consumer Units	Number of connections	1185	1211	1251	1283	1331	1368
System Input Volume	l/connection/day	732	709	695	785	653	499
Average Billed Metered Cons.	l/connection/day	631	659	670	712	564	432
Non-Revenue Water	l/connection/day	101	50	15	73	89	67

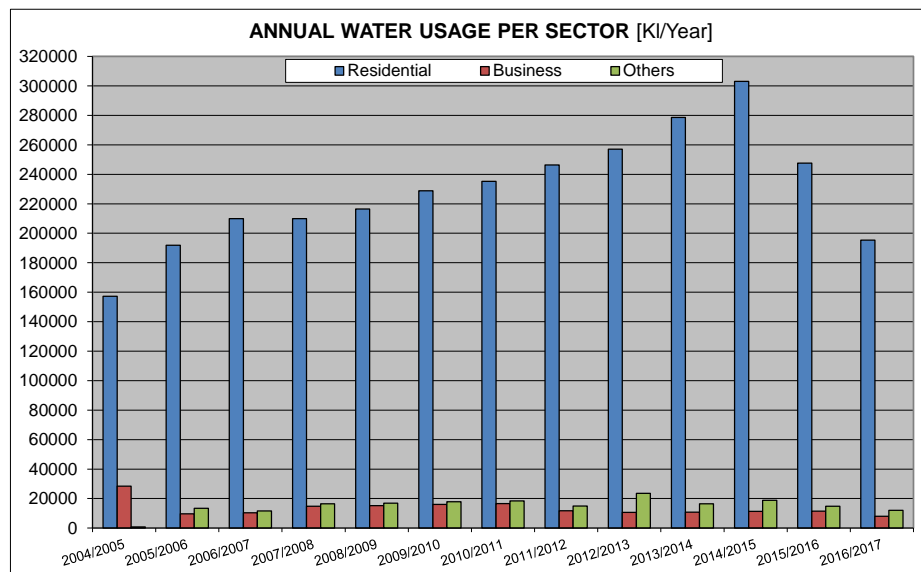
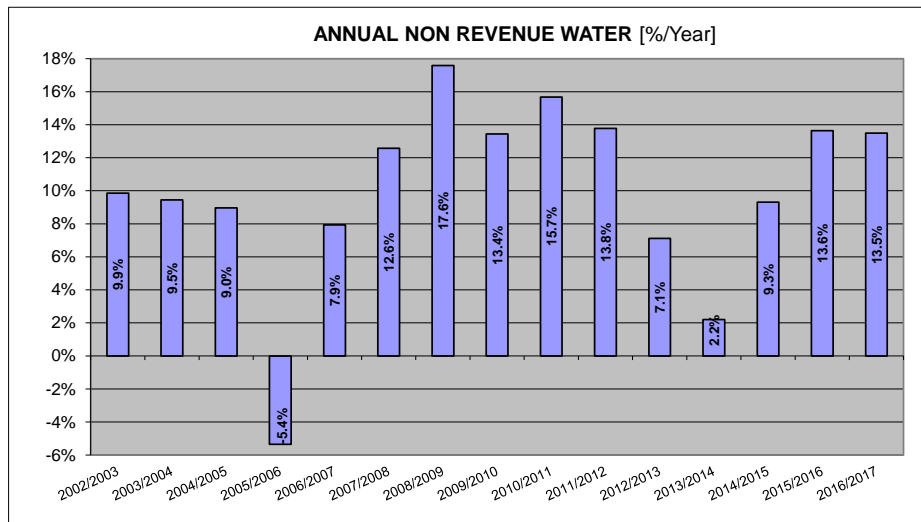
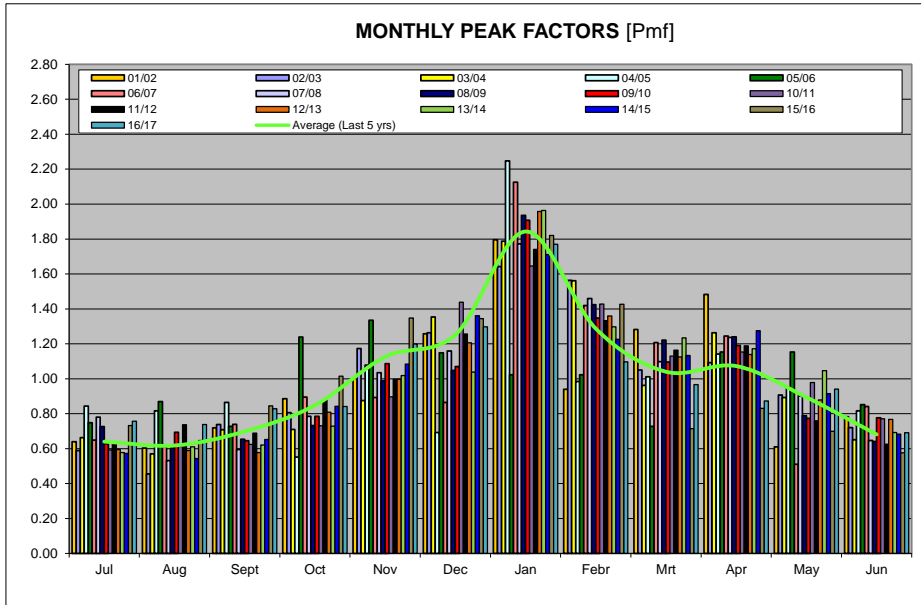
Water Balance Components		Percentage Change in Volumes in l/connection/day, year on year					
Component	Units	2011/2012	2012/2013	2013/2014	2014/2015	2015/2016	2016/2017
System Input Volume	% Change in Volume	-	-3.11%	-3.11%	11.57%	-18.33%	-23.82%
Average Billed Metered Cons.	% Change in Volume	-	-4.37%	1.69%	6.24%	-20.75%	-23.39%
Non-Revenue Water	% Change in Volume	-	-49.96%	-70.02%	383.29%	21.74%	-24.33%

Water Balance Components		Did volume in l/connection/day Rise or Fall, year on year?					
Component	Units	2011/2012	2012/2013	2013/2014	2014/2015	2015/2016	2016/2017
System Input Volume	Rise or Fall	-	Fall	Fall	Rise	Fall	Fall
Average Billed Metered Cons.	Rise or Fall	-	Rise	Rise	Rise	Fall	Fall
Non-Revenue Water	Rise or Fall	-	Fall	Fall	Rise	Rise	Fall

WATER BALANCE AND USAGE FOR YZERFONTEIN DISTRIBUTION



WATER BALANCE AND USAGE FOR YZERFONTEIN DISTRIBUTION



WATER BALANCE AND USAGE FOR YZERFONTEIN DISTRIBUTION

