



SWARTLAND MUNICIPALITY														
Riebeeck Wes														
Month	Year	BULK WATER SUPPLY				TREATED WATER SUPPLY				TOTALS ( ONLY NETWORK NRW)				
		Raw Water Supply	System Input Volume	Monthly NRW [m <sup>3</sup> ]	Monthly NRW [%]	System Input Volume	Billed Metered Consumption	Monthly NRW [m <sup>3</sup> ]	Monthly NRW [%]	Monthly NRW [m <sup>3</sup> ]	Monthly NRW [%]	Annual NRW [m <sup>3</sup> ]	Annual NRW [%]	
Jul12	12/13		11571			11571	9744	1827	15.8		1827	15.8	22376	12.0%
Aug12			11935			11935	9291	2644	22.2	2644	22.2			
Sep12			11032			11032	11454	-422	-3.8	-422	-3.8			
Oct12			13070			13070	10552	2518	19.3	2518	19.3			
Nov12			16844			16844	12222	4622	27.4	4622	27.4			
Dec12			17405			17405	18679	-1274	-7.3	-1274	-7.3			
Jan13			20616			20616	16862	3754	18.2	3754	18.2			
Feb13			20513			20513	19473	2040	9.9	2040	9.9			
Mar13			18214			18214	16381	1833	10.1	1833	10.1			
Apr13			15691			15691	15389	302	1.9	302	1.9			
May13			15824			15824	12841	2983	18.9	2983	18.9			
Jun13			14028			14028	12490	1539	11.0	1549	11.0			
Jul13	13/14		10162			10162	15159	-4997	-49.2	-4997	-49.2	-8750	-4.8%	
Aug13			12330			12330	11638	692	5.6	692	5.6			
Sep13			11718			11718	11553	165	1.4	165	1.4			
Oct13			13420			13420	11903	1517	11.3	1517	11.3			
Nov13			16181			16181	16023	158	0.9	158	0.9			
Dec13			15790			15790	15623	167	1.1	167	1.1			
Jan14			23167			23167	20876	2291	9.9	2291	9.9			
Feb14			19272			19272	28900	-9628	-50.0	-9628	-50.0			
Mar14			19096			19096	17699	1397	7.3	1397	7.3			
Apr14			16223			16223	16608	-385	-2.4	-385	-2.4			
May14			14169			14169	15582	-1713	-12.1	-1713	-12.1			
Jun14			12712			12712	11096	1616	12.7	1616	12.7			
Jul14	14/15		13072			13072	12807	265	2.0	265	2.0	24966	11.9%	
Aug14			12879			12879	11543	1336	10.4	1336	10.4			
Sep14			13595			13595	11464	2131	15.7	2131	15.7			
Oct14			15060			15060	14064	996	6.6	996	6.6			
Nov14			17573			17573	15446	2127	12.1	2127	12.1			
Dec14			19914			19914	15398	4416	22.3	4416	22.3			
Jan15			23614			23614	23839	-225	-1.0	-225	-1.0			
Feb15			20117			20117	16282	3835	19.1	3835	19.1			
Mar15			19784			19784	17507	2277	11.5	2277	11.5			
Apr15			20616			20616	15575	5041	24.5	5041	24.5			
May15			18021			18021	15743	2278	12.6	2278	12.6			
Jun15			15082			15082	14595	487	3.2	487	3.2			
Jul15	15/16		14038			14038	10603	3432	24.5	3432	24.5	31570	16.7%	
Aug15			13976			13976	11432	2544	18.2	2544	18.2			
Sep15			18514			18514	12788	5726	30.9	5726	30.9			
Oct15			15806			15806	12820	2986	18.9	2986	18.9			
Nov15			20132			20132	16937	3195	15.9	3195	15.9			
Dec15			18958			18958	16925	2033	10.7	2033	10.7			
Jan16			20322			20322	17774	2548	12.5	2548	12.5			
Feb16			16969			16969	18263	-1295	-8.3	-1295	-8.3			
Mar16			12824			12824	10616	2208	17.2	2208	17.2			
Apr16			12983			12983	11722	1261	9.7	1261	9.7			
May16			12826			12826	9809	3017	23.5	3017	23.5			
Jun16			12197			12197	8181	4016	32.9	4016	32.9			
Jul16	16/17		11838			11838	11213	625	5.3	625	5.3	11134	6.7%	
Aug16			12509			12509	11919	590	4.7	590	4.7			
Sep16			11774			11774	21759	-9985	-84.9	-9985	-84.9			
Oct16			11110			11110	11139	-29	-0.3	-29	-0.3			
Nov16			14518			14518	10866	3652	25.2	3652	25.2			
Dec16			16092			16092	15604	488	3.0	488	3.0			
Jan17			17466			17466	13541	3927	22.5	3927	22.5			
Feb17			16458			16458	13192	3266	19.8	3266	19.8			
Mar17			14894			14894	11380	3514	23.6	3514	23.6			
Apr17			11507			11507	11507	0	0.0	0	0.0			
May17			13672			13672	11189	2483	18.2	2483	18.2			
Jun17			12322			12322	10634	1688	13.7	1688	13.7			

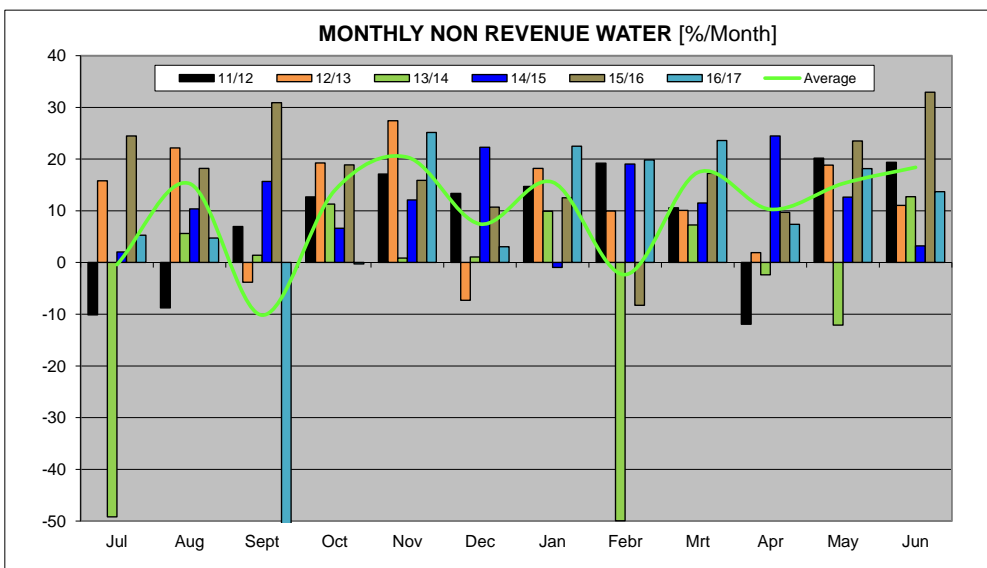
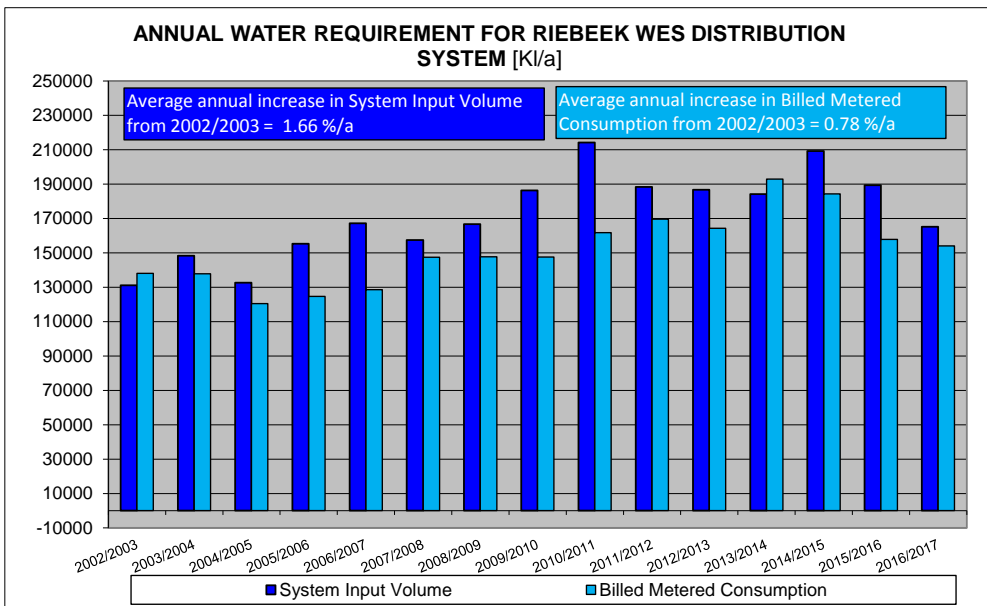
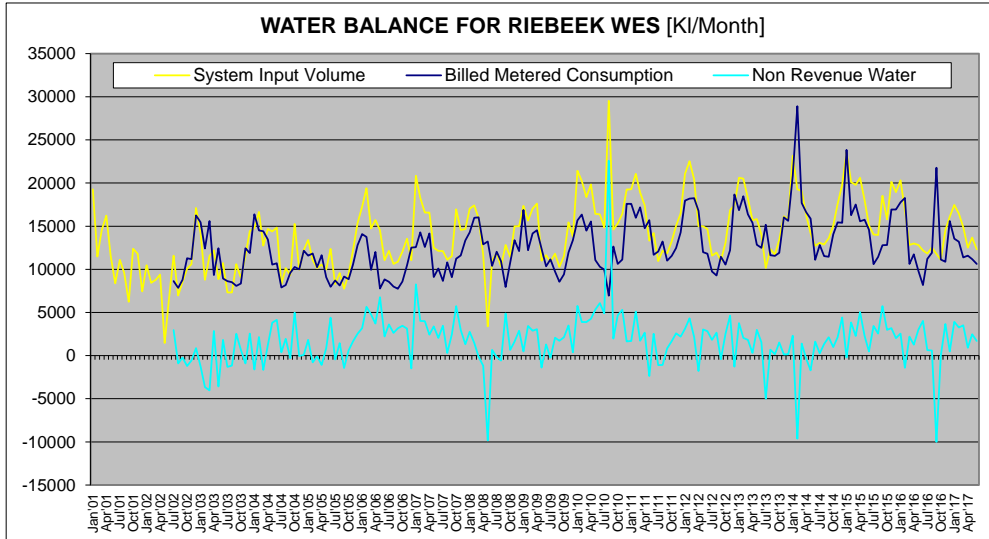
ANNUAL TOTALS				
Year	System Input Volume	Billed Metered Consumption	NRW m <sup>3</sup>	NRW %
2001/2002	103715			
2002/2003	131151	138118	-6968	-5.3%
2003/2004	148353	137899	10454	7.0%
2004/2005	132657	120439	12218	9.2%
2005/2006	155286	124638	30648	19.7%
2006/2007	167235	129855	37380	22.3%
2007/2008	157435	147476	9959	6.3%
2008/2009	166745	147890	19055	11.4%
2009/2010	186384	147610	38774	20.8%
2010/2011	214216	161779	52437	24.5%
2011/2012	188371	169603	18768	10.0%
2012/2013	186744	164368	22376	12.0%
2013/2014	184210	192960	-8750	-4.8%
2014/2015	209227	184261	24966	11.9%
2015/2016	189440	157870	31570	16.7%
2016/2017	165162	154028	11134	6.7%

Water Balance Components			Water Balance Volumes					
Component	Units		2011/2012	2012/2013	2013/2014	2014/2015	2015/2016	2016/2017
Consumer Units	Number of connections		757	762	766	777	783	779
System Input Volume	l/connection/day		692	677	659	738	653	591
Average Billed Metered Cons.	l/connection/day		614	591	690	650	552	542
Non-Revenue Water	l/connection/day		68	80	-31	88	110	39

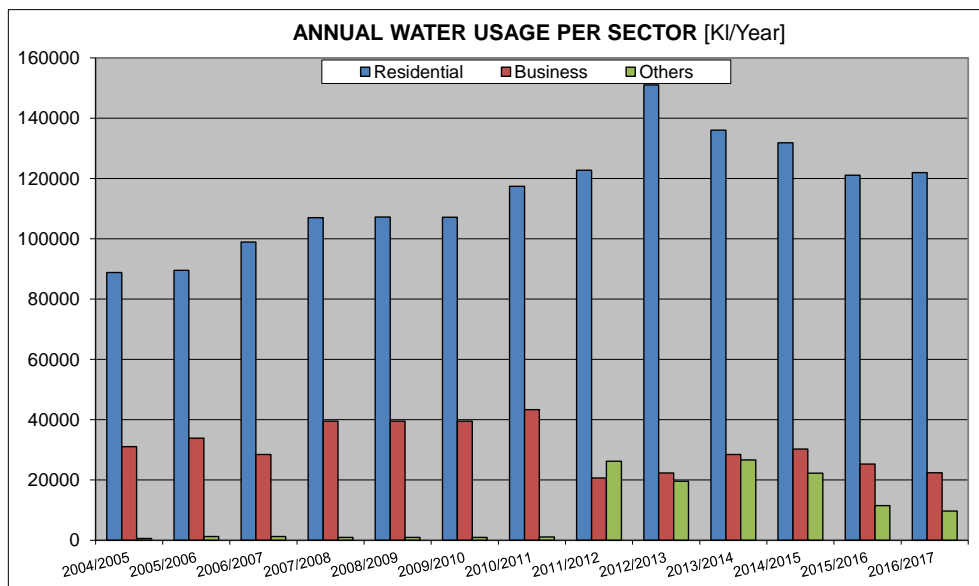
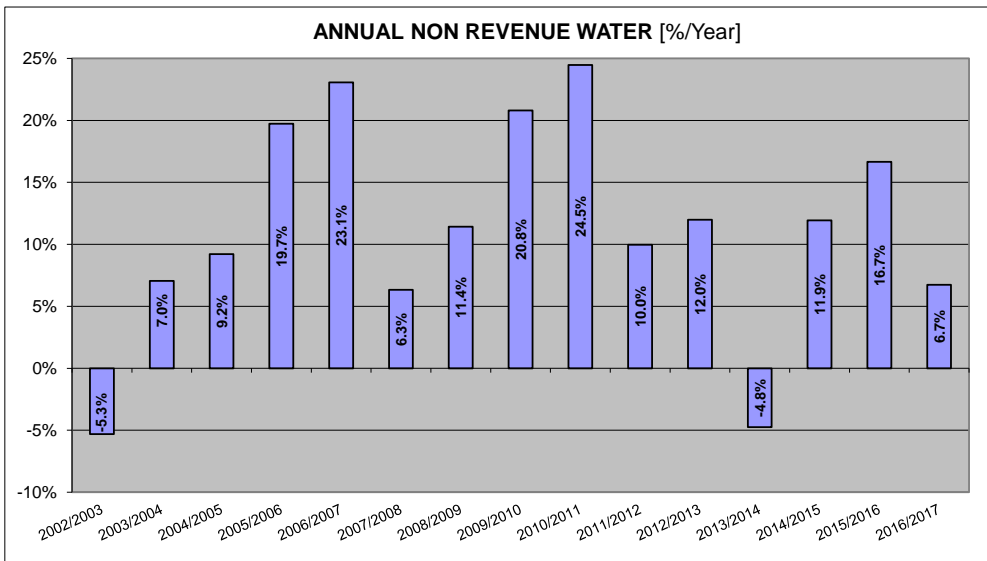
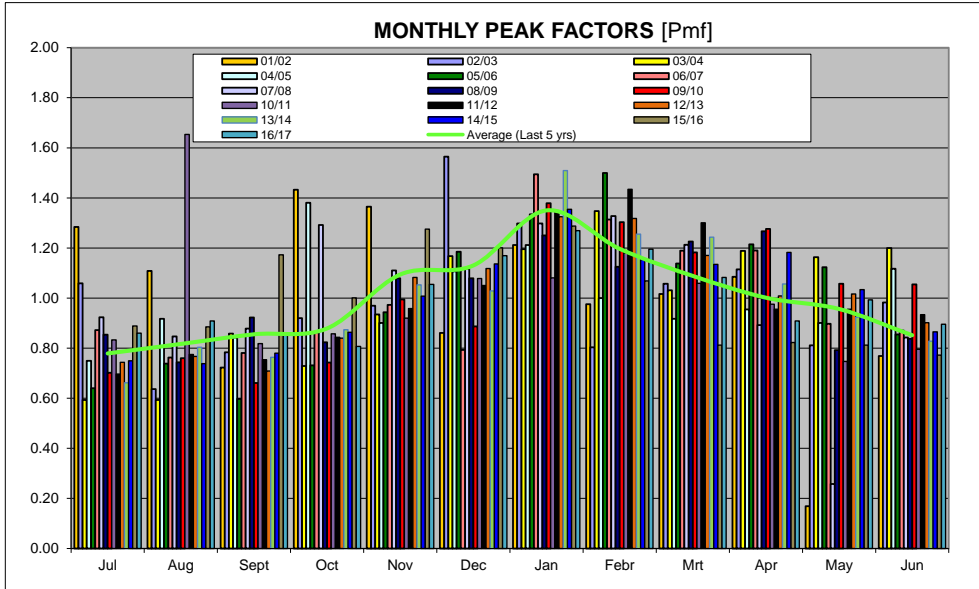
Water Balance Components			Percentage Change in Volumes in l/connection/day, year on year					
Component	Units		2011/2012	2012/2013	2013/2014	2014/2015	2015/2016	2016/2017
System Input Volume	% Change in Volume		-	-1.51%	-1.87%	11.87%	-10.15%	-12.37%
Average Billed Metered Cons.	% Change in Volume		-	-3.72%	16.78%	-5.96%	-14.98%	-1.93%
Non-Revenue Water	% Change in Volume		-	18.44%	-138.90%	-381.29%	25.48%	-64.55%

Water Balance Components			Did volume in l/connection/day Rise or Fall, year on year?					
Component	Units		2011/2012	2012/2013	2013/2014	2014/2015	2015/2016	2016/2017
System Input Volume	Rise or Fall		-	Fall	Fall	Rise	Fall	Fall
Average Billed Metered Cons.	Rise or Fall		-	Fall	Rise	Fall	Fall	Fall
Non-Revenue Water	Rise or Fall		-	Rise	Fall	Rise	Rise	Fall

**WATER BALANCE AND USAGE FOR RIEBEEK WES DISTRIBUTION SYSTEM**



**WATER BALANCE AND USAGE FOR RIEBEEK WES DISTRIBUTION SYSTEM**



**WATER BALANCE AND USAGE FOR RIEBEEK WES DISTRIBUTION SYSTEM**

