

SWARTLAND MUNICIPALITY													
Riebeeck Kasteel													
Month	Year	BULK WATER SUPPLY				TREATED WATER SUPPLY				TOTALS (ONLY NETWORK NRW)			
		Raw Water Supply	System Input Volume	Monthly NRW [m³]	Monthly NRW [%]	System Input Volume	Billed Metered Consumption	Monthly NRW [m³]	Monthly NRW [%]	Monthly NRW [m³]	Monthly NRW [%]	Annual NRW [m³]	Annual NRW [%]
Jul12	12/13					16037	11847	4190	26.1	4190	26.1	52455	18.4%
Aug12						14244	10612	3632	25.5	3632	25.5		
Sep12						13437	10890	2547	19.0	2547	19.0		
Oct12						16079	13224	2855	17.8	2855	17.8		
Nov12						24578	16389	8478	34.1	8478	34.1		
Dec12						29400	25552	3848	13.1	3848	13.1		
Jan13						35813	29298	6515	18.2	6515	18.2		
Feb13						36379	29916	7661	20.9	7661	20.9		
Mar13						30145	27778	2367	7.9	2367	7.9		
Apr13						26815	22883	4132	15.4	4132	15.4		
May13						21572	19472	2100	9.7	2100	9.7		
Jun13						19566	15457	4129	21.1	4129	21.1		
Jul13	13/14					13678	12142	1536	11.2	1536	11.2		
Aug13						14762	13944	818	5.5	818	5.5		
Sep13						16038	11461	4577	29.5	4577	29.5		
Oct13						17504	12198	5006	29.1	5006	29.1		
Nov13						23766	17974	5792	24.4	5792	24.4		
Dec13						27040	31463	-4423	-18.4	-4423	-18.4		
Jan14						36338	26781	9257	25.7	9257	25.7		
Feb14						38337	34758	3579	9.3	3579	9.3		
Mar14						39554	31405	8149	20.6	8149	20.6		
Apr14						31841	26963	4858	15.3	4858	15.3		
May14						25925	22308	2184	8.7	2184	8.7		
Jun14						17517	1393	16124	92.0	16124	92.0		
Jul14	14/15					16522	13239	3283	19.9	3283	19.9		
Aug14						16208	14267	1942	12.0	1942	12.0		
Sep14						16537	12362	4175	25.2	4175	25.2		
Oct14						21155	16351	4804	22.7	4804	22.7		
Nov14						27250	24588	4562	16.7	4562	16.7		
Dec14						34292	24378	9914	29.9	9914	29.9		
Jan15						39051	36259	2792	7.1	2792	7.1		
Feb15						36032	28322	7710	21.4	7710	21.4		
Mar15						36030	26020	9723	18.7	9723	18.7		
Apr15						37404	26746	10658	28.5	10658	28.5		
May15						28728	23111	5617	19.6	5617	19.6		
Jun15						20230	19980	250	1.2	250	1.2		
Jul15	15/16					17567	13229	4338	24.7	4338	24.7		
Aug15						14421	13551	870	6.0	870	6.0		
Sep15						21886	14482	7204	33.2	7204	33.2		
Oct15						23759	19706	4053	17.1	4053	17.1		
Nov15						33285	25241	8044	24.2	8044	24.2		
Dec15						33145	28838	4307	13.0	4307	13.0		
Jan16						35868	29930	6060	16.9	6060	16.9		
Feb16						34541	31150	3451	10.0	3451	10.0		
Mar16						20455	17822	2633	12.9	2633	12.9		
Apr16						18198	18069	129	0.7	129	0.7		
May16						17168	14876	2290	13.3	2290	13.3		
Jun16						16947	12771	4176	24.6	4176	24.6		
Jul16	16/17					16732	14161	2571	15.4	2571	15.4		
Aug16						16886	15130	1756	10.4	1756	10.4		
Sep16						17169	17169	1512	11.5	1512	11.5		
Oct16						16903	15068	1835	10.9	1835	10.9		
Nov16						23642	17110	6532	27.6	6532	27.6		
Dec16						25304	23812	1512	6.2	1512	6.2		
Jan17						29416	22973	6445	21.9	6445	21.9		
Feb17						24983	19756	5227	20.9	5227	20.9		
Mar17						20146	18659	3487	17.3	3487	17.3		
Apr17						18440	16763	1668	9.1	1668	9.1		
May17						21616	16221	5395	25.0	5395	25.0		
Jun17						19308	14632	4676	24.2	4676	24.2		

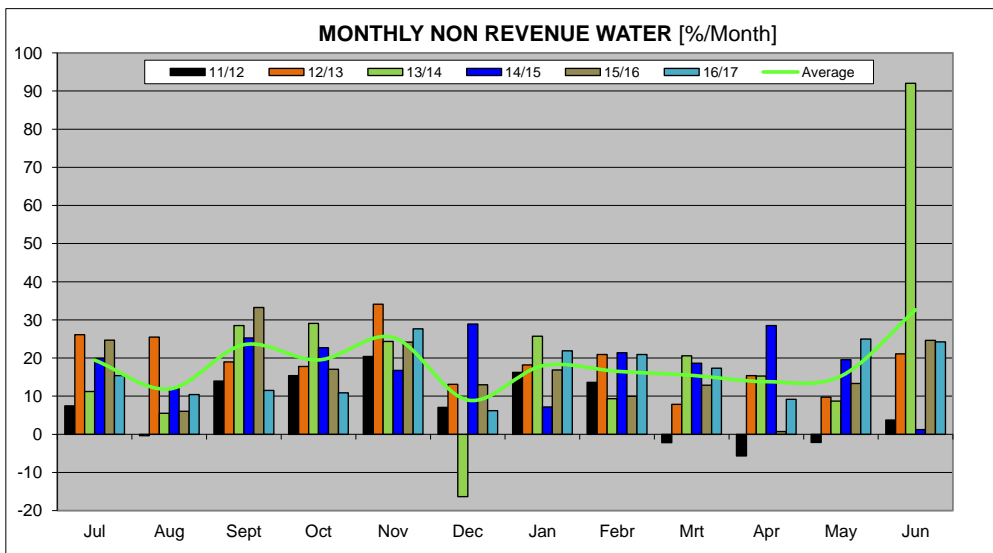
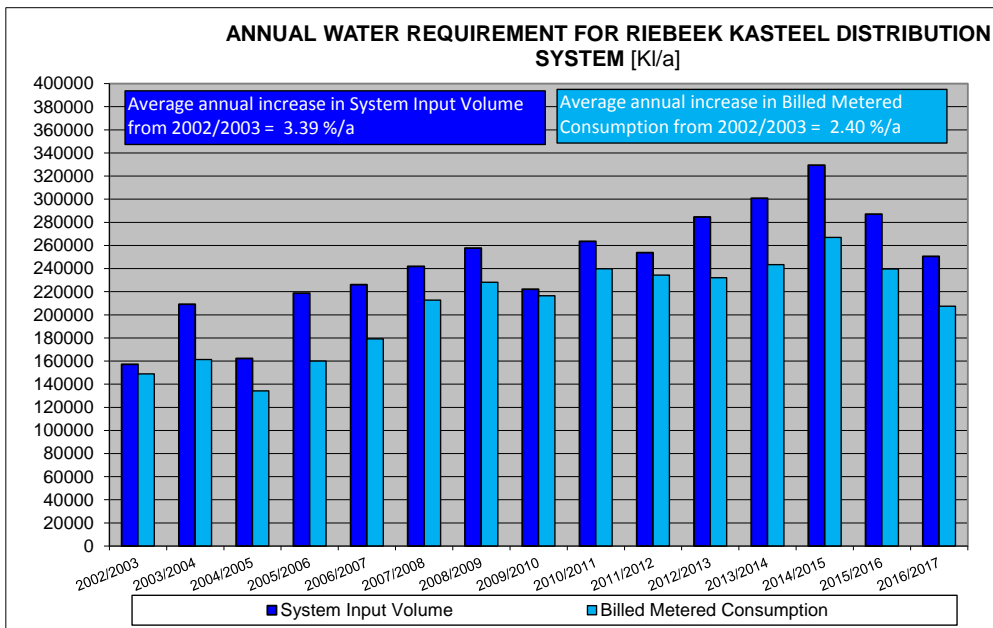
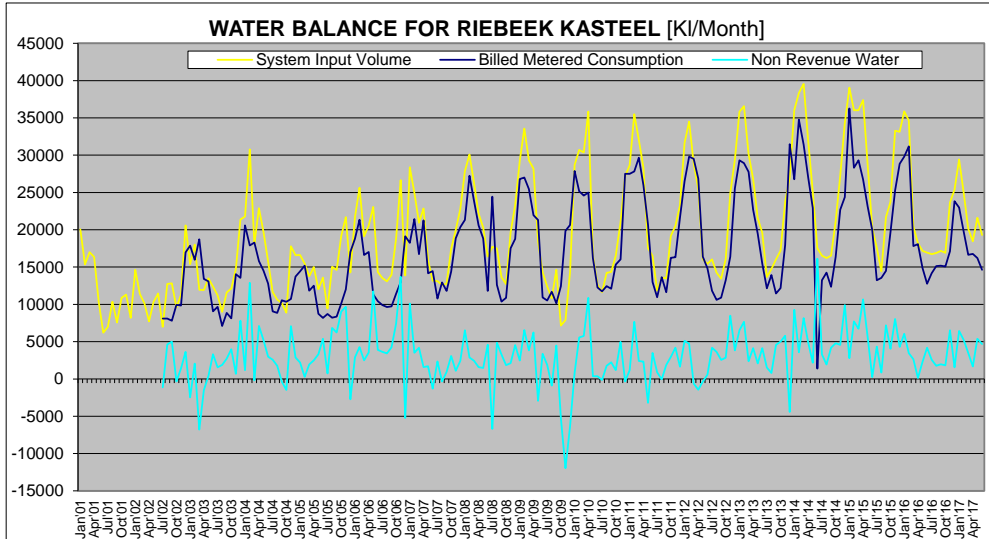
ANNUAL TOTALS				
Year	System Input Volume	Billed Metered Consumption	NRW m³	NRW %
2001/2002	120933			
2002/2003	157215	148916	8299	5.3%
2003/2004	209142	161281	47861	22.9%
2004/2005	162254	134156	28098	17.3%
2005/2006	218651	159991	58660	26.8%
2006/2007	225158	179115	47043	20.8%
2007/2008	241840	212784	29056	12.0%
2008/2009	257634	228137	29497	11.4%
2009/2010	222052	216428	5624	2.5%
2010/2011	263487	239870	23617	9.0%
2011/2012	253825	234337	19488	7.7%
2012/2013	284585	232130	52455	18.4%
2013/2014	300867	243410	57457	19.1%
2014/2015	329440	267010	62430	19.0%
2015/2016	287140	239585	47555	16.6%
2016/2017	250636	207482	43154	17.2%

Water Balance Components		Water Balance Volumes					
Component	Units	2011/2012	2012/2013	2013/2014	2014/2015	2015/2016	2016/2017
Consumer Units	Number of connections	1113	1125	1141	1136	1151	1153
System Input Volume	l/connection/day	625	693	722	795	883	596
Average Billed Metered Cons.	l/connection/day	577	565	584	644	570	493
Non-Revenue Water	l/connection/day	48	128	138	151	113	103

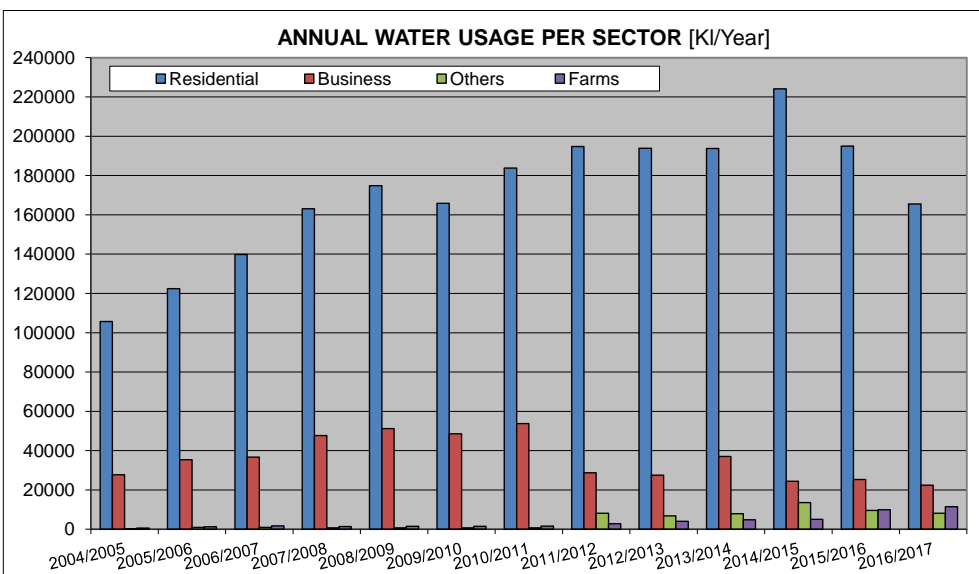
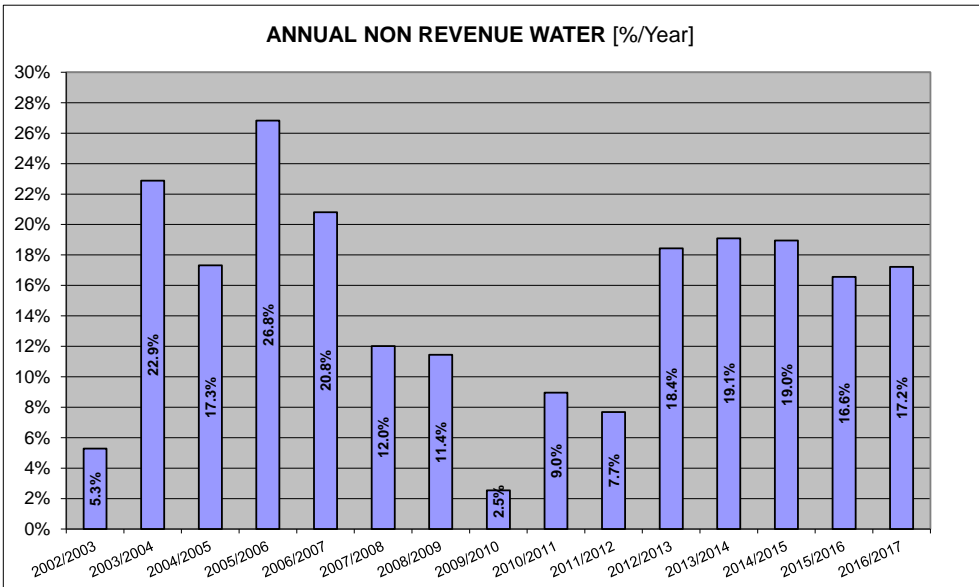
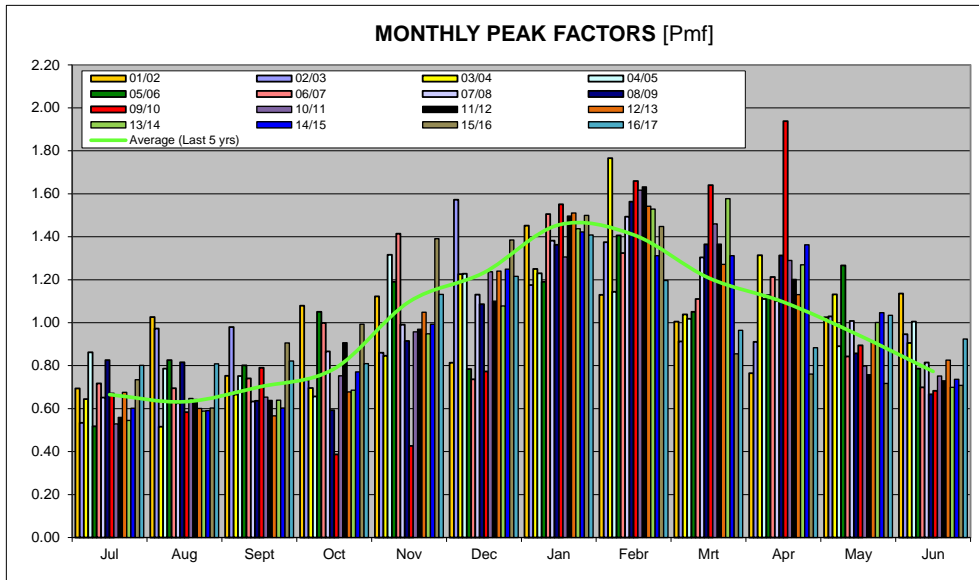
Water Balance Components		Percentage Change in Volumes in l/connection/day, year on year					
Component	Units	2011/2012	2012/2013	2013/2014	2014/2015	2015/2016	2016/2017
System Input Volume	% Change in Volume	-	10.92%	4.24%	9.98%	-13.98%	-12.86%
Average Billed Metered Cons.	% Change in Volume	-	-2.00%	3.39%	10.18%	-11.44%	-13.55%
Non-Revenue Water	% Change in Volume	-	166.29%	8.00%	9.13%	-24.82%	-9.41%

Water Balance Components		Did volume in l/connection/day Rise or Fall, year on year?					
Component	Units	2011/2012	2012/2013	2013/2014	2014/2015	2015/2016	2016/2017
System Input Volume	Rise or Fall	-	Rise	Rise	Rise	Fall	Fall
Average Billed Metered Cons.	Rise or Fall	-	Fall	Rise	Rise	Fall	Fall
Non-Revenue Water	Rise or Fall	-	Rise	Rise	Rise	Fall	Fall

WATER BALANCE AND USAGE FOR RIEBEEK KASTEEL DISTRIBUTION SYSTEM



WATER BALANCE AND USAGE FOR RIEBEEK KASTEEL DISTRIBUTION SYSTEM



WATER BALANCE AND USAGE FOR RIEBEEK KASTEEL DISTRIBUTION SYSTEM

