

SWARTLAND MUNICIPALITY													
Ongegend (PPC)													
Month	Year	BULK WATER SUPPLY				TREATED WATER SUPPLY				TOTALS (ONLY NETWORK NRW)			
		Raw Water Supply	System Input Volume	Monthly NRW [m³]	Monthly NRW [%]	System Input Volume	Billed Metered Consumption	Monthly NRW [m³]	Monthly NRW [%]	Monthly NRW [m³]	Monthly NRW [%]	Annual NRW [m³]	Annual NRW [%]
Jul12	12/13					2463	1544	919	37.3	919	37.3	15737	26.7%
Aug12						5405	1486	3919	72.5	3919	72.5		
Sep12						6107	1684	4423	72.4	4423	72.4		
Oct12						6441	1746	4695	72.9	4695	72.9		
Nov12						3381	3134	247	7.3	247	7.3		
Dec12						7076	6467	609	8.6	609	8.6		
Jan13						7590	6879	711	9.4	711	9.4		
Feb13						2339	1982	458	19.4	458	19.4		
Mar13						7350	4692	2658	36.2	2658	36.2		
Apr13						4416	3988	428	9.7	428	9.7		
May13						4036	2898	1138	28.2	1138	28.2		
Jun13						2253	1670	583	25.9	583	25.9		
Jul13	13/14				1480	2834	-1354	-91.5	-1354	-91.5	4128	8.5%	
Aug13					2512	2079	433	17.2	433	17.2			
Sep13					1124	1980	-856	-77.0	-856	-77.0			
Oct13					2807	1816	991	35.3	991	35.3			
Nov13					3368	2733	635	18.9	635	18.9			
Dec13					3566	3591	-25	-0.7	-25	-0.7			
Jan14					7046	4930	2116	30.0	2116	30.0			
Feb14					7195	5066	2129	29.6	2129	29.6			
Mar14					7238	8209	-971	-13.4	-971	-13.4			
Apr14					5432	4416	1016	24.2	1016	24.2			
May14					4263	3652	611	13.4	611	13.4			
Jun14					2583	3431	-848	-32.8	-848	-32.8			
Jul14	14/15				2885	1300	1585	56.4	1585	56.4	10743	22.1%	
Aug14					2527	1654	873	34.5	873	34.5			
Sep14					2588	1679	909	35.1	909	35.1			
Oct14					3592	2733	859	23.9	859	23.9			
Nov14					5267	3925	1342	25.5	1342	25.5			
Dec14					6291	3749	2542	40.3	2542	40.3			
Jan15					4843	6003	-1160	-24.0	-1160	-24.0			
Feb15					5251	3730	1521	29.0	1521	29.0			
Mar15					4532	4532	0	0.0	0	0.0			
Apr15					3911	4100	-189	-4.6	-189	-4.6			
May15					5145	2864	2281	44.3	2281	44.3			
Jun15					2533	2395	138	5.3	138	5.3			
Jul15	15/16				2254	1974	280	12.4	280	12.4	14966	34.4%	
Aug15					1761	1680	81	4.6	81	4.6			
Sep15					2921	1750	1171	40.1	1171	40.1			
Oct15					5432	4416	1016	24.2	1016	24.2			
Nov15					3797	2948	849	22.4	849	22.4			
Dec15					4210	3641	569	13.5	569	13.5			
Jan16					5231	3515	1716	32.8	1716	32.8			
Feb16					6203	4769	1434	23.1	1434	23.1			
Mar16					4259	1754	2505	58.8	2505	58.8			
Apr16					3636	1974	1662	45.7	1662	45.7			
May16					3531	1291	2240	49.0	2240	49.0			
Jun16					3735	1212	2523	67.6	2523	67.6			
Jul16	16/17				2767	1641	1126	40.7	1126	40.7	17748	45.2%	
Aug16					3193	1530	1663	52.1	1663	52.1			
Sep16					3801	1761	2040	57.1	2040	57.1			
Oct16					3511	1449	2062	58.7	2062	58.7			
Nov16					3856	1742	2114	54.8	2114	54.8			
Dec16					3715	2298	1417	39.2	1417	39.2			
Jan17					4218	2453	1765	41.8	1765	41.8			
Feb17					3875	1963	1912	49.3	1912	49.3			
Mar17					3262	1945	1417	43.4	1417	43.4			
Apr17					3555	1786	1769	50.1	1769	50.1			
May17					3145	1826	1319	41.9	1319	41.9			
Jun17					2388	1284	1104	46.2	1104	46.2			

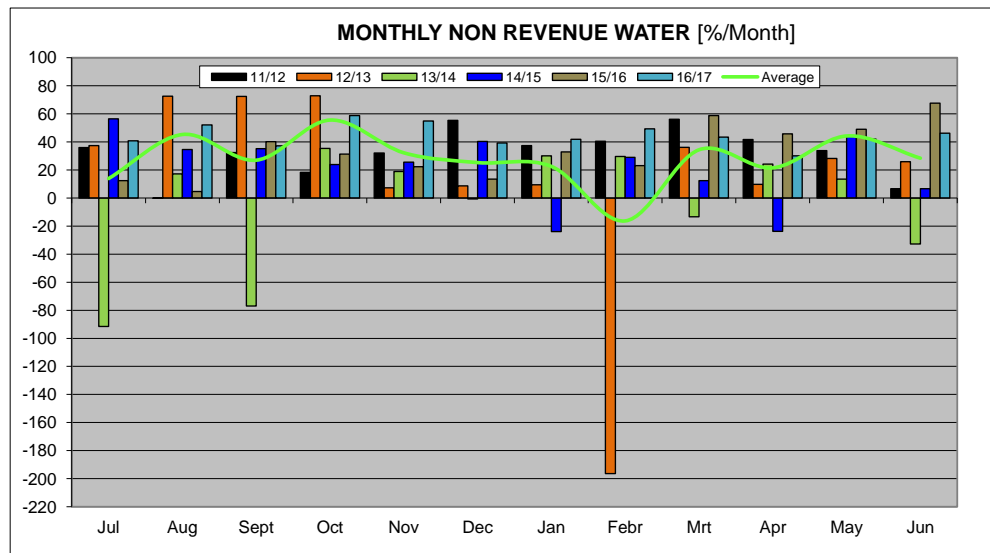
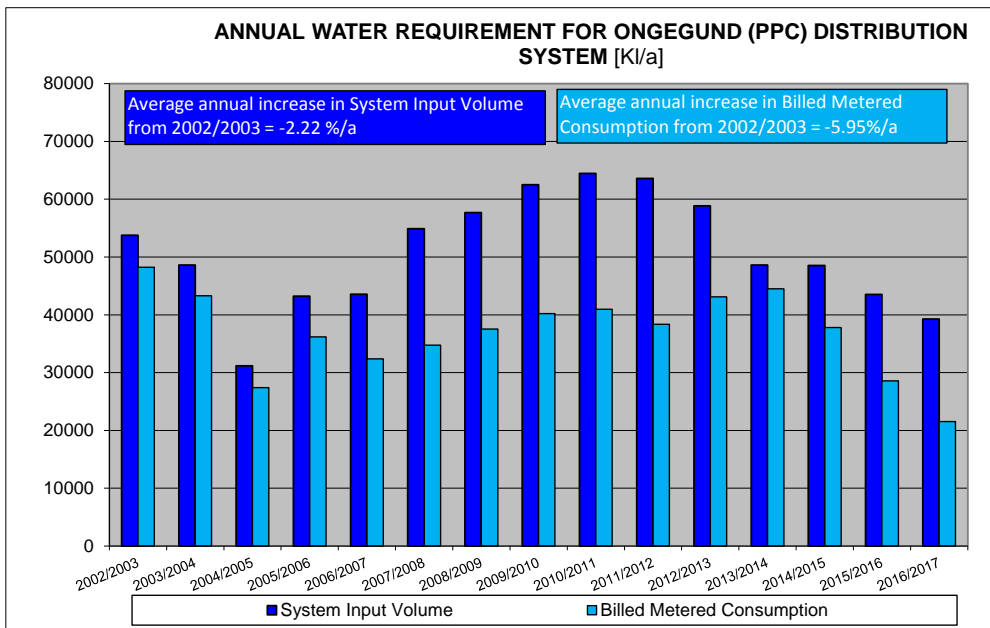
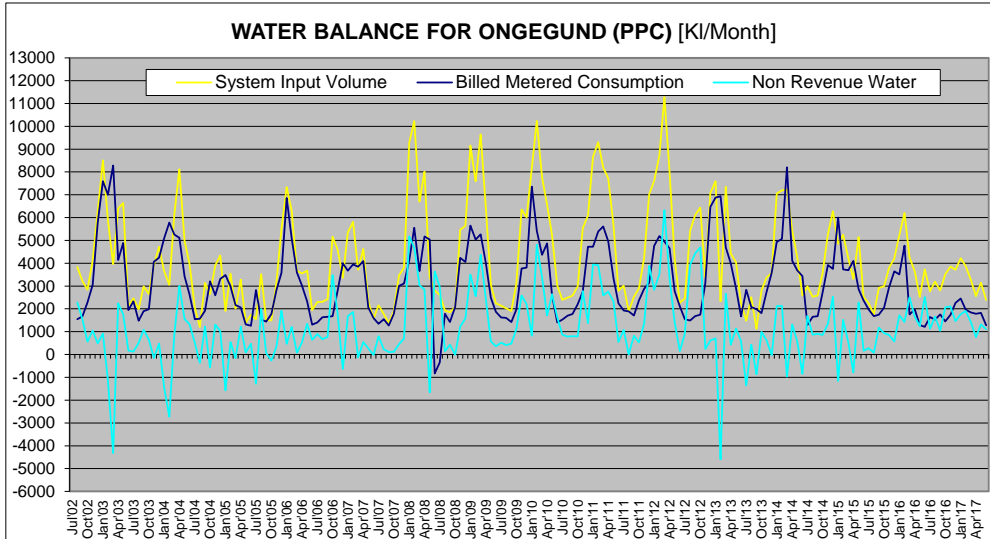
ANNUAL TOTALS				
Year	System Input Volume	Billed Metered Consumption	NRW m³	NRW %
2002/2003	53765	48212	5553	10.3%
2003/2004	48600	43302	5298	10.9%
2004/2005	31170	27421	3749	12.0%
2005/2006	43225	36179	7046	16.3%
2006/2007	43555	32383	11172	25.7%
2007/2008	54875	34759	20116	36.7%
2008/2009	57676	37546	20130	34.9%
2009/2010	62512	40194	22318	35.7%
2010/2011	64439	40963	23476	36.4%
2011/2012	63600	38364	25236	39.7%
2012/2013	58857	43120	15737	26.7%
2013/2014	48614	44466	4128	8.5%
2014/2015	49839	37796	10743	22.1%
2015/2016	43529	28563	14966	34.4%
2016/2017	39286	21538	17748	45.2%

Water Balance Components		Water Balance Volumes					
Component	Units	2011/2012	2012/2013	2013/2014	2014/2015	2015/2016	2016/2017
Consumer Units	Number of connections	96	99	100	101	102	100
System Input Volume	l/connection/day	1615	1629	1332	1317	1169	1076
Average Billed Metered Cons.	l/connection/day	1095	1193	1219	1025	767	590
Non-Revenue Water	l/connection/day	720	436	113	291	402	486

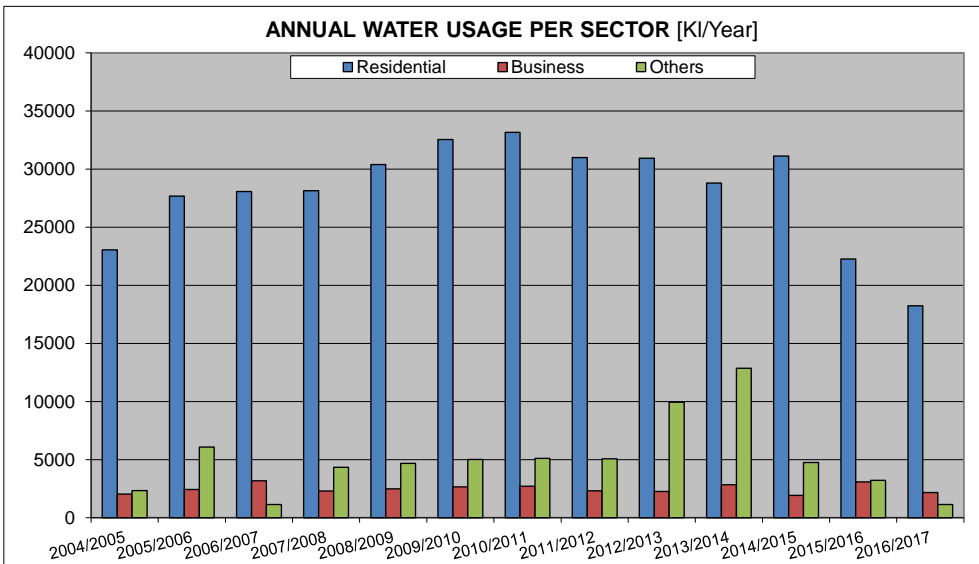
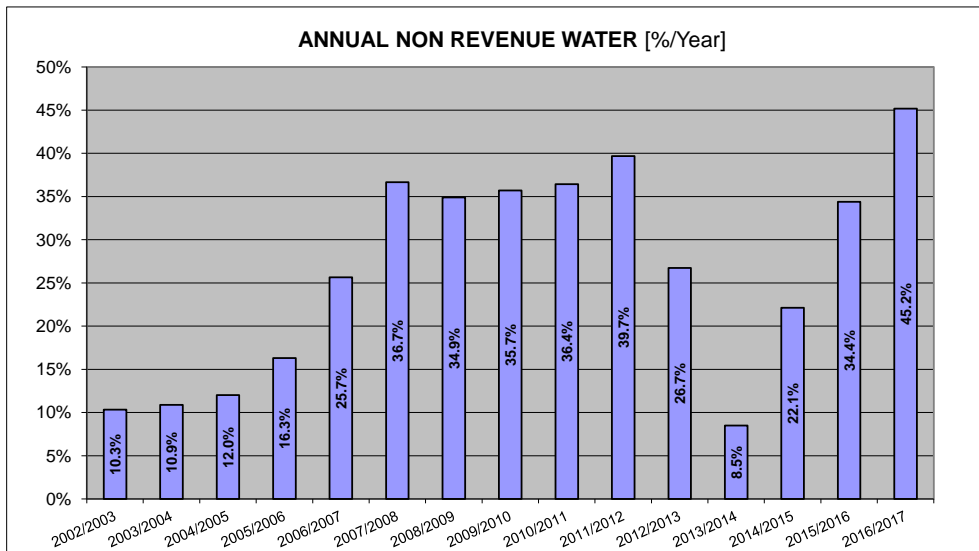
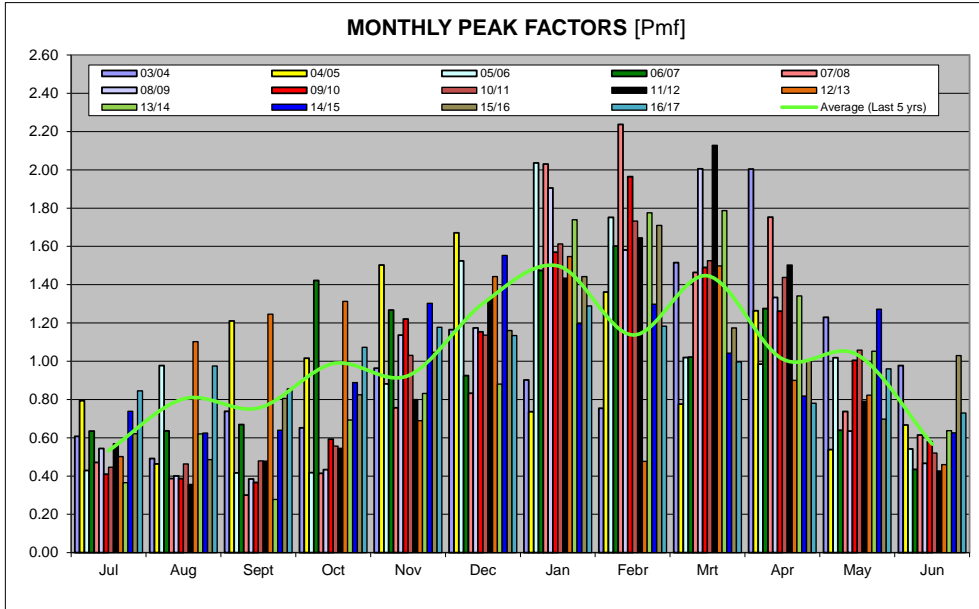
Water Balance Components		Percentage Change in Volumes in l/connection/day, year on year					
Component	Units	2011/2012	2012/2013	2013/2014	2014/2015	2015/2016	2016/2017
System Input Volume	% Change in Volume	-	-10.26%	-18.23%	-1.14%	-11.20%	-7.64%
Average Billed Metered Cons.	% Change in Volume	-	8.99%	2.14%	-15.88%	-25.17%	-23.09%
Non-Revenue Water	% Change in Volume	-	-39.53%	-74.03%	157.67%	37.94%	20.96%

Water Balance Components		Did volume in l/connection/day Rise or Fall, year on year?					
Component	Units	2011/2012	2012/2013	2013/2014	2014/2015	2015/2016	2016/2017
System Input Volume	Rise or Fall	-	Fall	Fall	Fall	Fall	Fall
Average Billed Metered Cons.	Rise or Fall	-	Rise	Rise	Fall	Fall	Fall
Non-Revenue Water	Rise or Fall	-	Fall	Fall	Rise	Rise	Rise

WATER BALANCE AND USAGE FOR THE PPC DISTRIBUTION SYSTEM



WATER BALANCE AND USAGE FOR THE PPC DISTRIBUTION SYSTEM



WATER BALANCE AND USAGE FOR THE PPC DISTRIBUTION SYSTEM

