

SWARTLAND MUNICIPALITY													
Moorreesburg													
Month	Year	BULK WATER SUPPLY				TREATED WATER SUPPLY				TOTALS (ONLY NETWORK NRW)			
		Raw Water Supply	System Input Volume	Monthly NRW [m³]	Monthly NRW [%]	System Input Volume	Billed Metered Consumption	Monthly NRW [m³]	Monthly NRW [%]	Monthly NRW [m³]	Monthly NRW [%]	Annual NRW [m³]	Annual NRW [%]
Jan01	00/01	76360											
Feb01		62430											
Mrt01		72570											
Apr01		59510											
May01		43860											
Jun01		31430											
Jul01		36190											
Aug01		38790											
Sep01		36440											
Oct01		41970											
Nov01		47390											
Dec01		67860											
Jan02	01/02	78150											
Feb02		61740											
Mrt02		80490											
Apr02		63630											
May02		49380											
Jun02		44490											
Jul02		43120	34012	9108	21.1	9108	21.1						
Aug02		43980	27804	16176	36.8	16176	36.8						
Sep02		43180	32993	10187	23.6	10187	23.6						
Oct02		55080	45337	9743	17.7	9743	17.7						
Nov02		58180	51542	6638	11.4	6638	11.4						
Dec02		83900	78904	13997	14.9	13997	14.9						
Jan03	02/03	85125	80412	4713	5.5	4713	5.5				84196	11.4%	
Feb03		82234	70695	11540	14.0	11540	14.0						
Mrt03		67800	75633	-7833	-11.6	-7833	-11.6						
Apr03		71970	59757	12214	17.0	12214	17.0						
May03		33240	55816	-22576	-67.9	-22576	-67.9						
Jun03		42340	42340	20291	32.5	20291	32.5						
Jul03		48700	40883	7817	16.1	7817	16.1						
Aug03		39935	42553	-2618	-6.6	-2618	-6.6						
Sep03		46450	35662	10888	23.4	10888	23.4						
Oct03		50940	41949	8991	17.5	8991	17.5						
Nov03		57100	59569	-2469	-4.3	-2469	-4.3						
Dec03		77240	73256	3984	5.2	3984	5.2						
Jan04	03/04	90335	84251	6084	6.7	6084	6.7				71533	9.4%	
Feb04		70180	74876	-4696	-6.7	-4696	-6.7						
Mrt04		90400	79034	11366	19.2	11366	19.2						
Apr04		67600	61897	5703	9.3	5703	9.3						
May04		63300	48092	15208	24.0	15208	24.0						
Jun04		57590	52115	5475	9.5	5475	9.5						
Jul04		42170	34597	7573	18.0	7573	18.0						
Aug04		52930	37529	15322	29.0	15322	29.0						
Sep04		51670	44747	6923	13.4	6923	13.4						
Oct04		61910	45359	16552	26.7	16552	26.7						
Nov04		63566	52565	11001	17.3	11001	17.3						
Dec04		60899	61400	-501	-0.8	-501	-0.8						
Jan05	04/05	85180	89858	26222	30.8	26222	30.8				111956	16.7%	
Feb05		61080	54065	7016	11.5	7016	11.5						
Mrt05		49490	47363	2127	4.3	2127	4.3						
Apr05		53420	46954	6466	12.1	6466	12.1						
May05		39640	39687	-47	-0.1	-47	-0.1						
Jun05		50400	37089	13313	26.4	13313	26.4						
Jul05		42940	37772	5168	14.4	5168	14.4						
Aug05		46590	39382	7198	15.5	7198	15.5						
Sep05		43070	38748	4322	10.0	4322	10.0						
Oct05		60900	42770	18130	29.8	18130	29.8						
Nov05		60930	52655	8276	13.6	8276	13.6						
Dec05		65260	73608	-8348	-12.8	-8348	-12.8						
Jan06	05/06	95910	73566	22354	23.3	22354	23.3				98363	13.0%	
Feb06		79100	75287	3813	4.8	3813	4.8						
Mrt06		77800	69991	7809	14.1	7809	14.1						
Apr06		64740	71411	-6671	-10.3	-6671	-10.3						
May06		62970	47821	15349	24.4	15349	24.4						
Jun06		59010	38187	16823	30.6	16823	30.6						
Jul06		51090	39624	11467	22.4	11467	22.4						
Aug06		71030	46421	24609	34.8	24609	34.8						
Sep06		52170	40069	12101	23.2	12101	23.2						
Oct06		44150	47446	-3296	-7.5	-3296	-7.5						
Nov06		78180	65186	12994	16.6	12994	16.6						
Dec06		59930	75315	-15385	-25.7	-15385	-25.7						
Jan07	06/07	103790	69075	34715	34.0	34715	34.0				148029	17.6%	
Feb07		88230	77941	10290	11.7	10290	11.7						
Mrt07		72340	67047	5293	7.3	5293	7.3						
Apr07		64460	70975	13496	16.0	13496	16.0						
May07		69190	49614	19578	28.3	19578	28.3						
Jun07		66080	43438	22642	34.3	22642	34.3						
Jul07		83080	29574	53506	68.0	53506	68.0						
Aug07		49000	47566	444	0.9	444	0.9						
Sep07		63880	42536	21344	33.4	21344	33.4						
Oct07		49010	52568	-3548	-7.2	-3548	-7.2						
Nov07		71880	60198	11682	16.0	11682	16.0						
Dec07		70440	70884	-444	-0.6	-444	-0.6						
Jan08	07/08	78960	70829	8131	10.3	8131	10.3				138609	16.8%	
Feb08		81670	75857	6013	7.4	6013	7.4						
Mrt08		71960	68666	3294	4.0	3294	4.0						
Apr08		81640	69520	12120	14.8	12120	14.8						
May08		84710	58454	26256	30.9	26256	30.9						
Jun08		58010	42710	15300	26.4	15300	26.4						
Jul08		49730	39519	10211	20.5	10211	20.5						
Aug08		48480	46867	1613	3.3	1613	3.3						
Sep08		57950	43199	14651	25.3	14651	25.3						
Oct08		51370	47248	4121	8.0	4121	8.0						
Nov08		65780	60486	5294	8.0	5294	8.0						
Dec08		83200	64325	18875	22.7	18875	22.7						
Jan09	08/09	74140	74970	-830	-1.1	-830	-1.1				109572	13.6%	
Feb09		92060	73700	18360	19.9	18360	19.9						
Mrt09		95020	69127	25893	27.3	25893	27.3						
Apr09		77390	72099	4901	6.3	4901	6.3						
May09		52870	59466	-6596	-12.5	-6596	-12.5						
Jun09		55790	38211	17579	31.5	17579	31.5						
Jul09		59990	42959	17032	28.4	17032	28.4						
Aug09		37510	41794	-4284	-11.4	-4284	-11.4						
Sep09		81090	38789	22301	36.5	22301	36.5						
Oct09		54070	45406	8664	16.0	8664	16.0						
Nov09		72930	57216	15612	21.4	15612	21.4						
Dec09		76140	61155	14985	19.7	14985	19.7						
Jan10	09/10	83980	82132	1848	2.2	1848	2.2				131529	16.5%	
Feb10		86740	62863	23877	28.2	23877	28.2						
Mrt10		75390	67499	7891	10.5	7891	10.5						
Apr10		78540	74763	3777	4.8	3777	4.8						
May10		66360	49698	16662	26.6	16662	26.6						
Jun10		42810	42696	124	0.3	124	0.3						
Jul10		45750	41183	4567	10.0	4567	10.0						
Aug10		56250	46700	9550	17.0	9550	17.0						
Sep10		50270	42460	7810	15.5	7810	15.5						
Oct10		63970	52991	10979	16.8	10979	16.8						
Nov10		61560	45567	16003	26.0	16003	26.0						
Dec10		70300	59016	11284	16.1	11284	16.1						
Jan11	10/11	86000	59016	26984	32.9	26984	32.9				93032	12.2%	
Feb11		86320	71050	15270	17.7	15270	17.7						
Mrt11		69977	77444	-7467	-10.7	-7467	-10.7						
Apr11		68401	69329	-528	-0.8	-528	-0.8						
May11		45026	38567	-13541	-30.1	-13541	-30.1						
Jun11		56500	45679	10821	19.2	10821	19.2						
Jul11		38073	44379	-6306	-16.6	-6306	-16.6						
Aug11		88213	50490	37813	42.9	37813	42.9						
Sep11		59100	42108	16992	28.8	16992	28.8						
Oct11		48190	49620	-1430	-3.0	-1430	-3.0						
Nov11		67750	53989	13865	20.5	13865	20.5						
Dec11		106404	87596	43648	41.0	43648	41.0						
Jan12	11/12	775											

SWARTLAND MUNICIPALITY													
Moorreesburg													
Month	Year	BULK WATER SUPPLY				TREATED WATER SUPPLY				TOTALS (ONLY NETWORK NRW)			
		Raw Water Supply	System Input Volume	Monthly NRW [m³]	Monthly NRW [%]	System Input Volume	Billed Metered Consumption	Monthly NRW [m³]	Monthly NRW [%]	Monthly NRW [m³]	Monthly NRW [%]	Annual NRW [m³]	Annual NRW [%]
Jul12	12/13					48281	38851	9430	19.5			86457	11.0%
Aug12						46733	38818	7915	16.9				
Sep12						46123	44260	1863	4.0				
Oct12						52377	45515	6862	13.1				
Nov12						74051	63154	10897	14.7				
Dec12						75733	80068	-4335	-5.7				
Jan13						86397	79057	7340	8.7				
Feb13						89760	74830	14930	16.6				
Mar13						75836	68823	7013	9.2				
Apr13						85022	82518	2504	3.9				
May13						71889	59265	12624	17.6				
Jun13						52738	44324	8414	16.0				
Jul13	13/14				46822	39272	7550	16.1			61799	7.9%	
Aug13					46331	47310	-979	-2.1					
Sep13					49816	40241	9575	19.9					
Oct13					51093	45815	5278	10.3					
Nov13					73342	64079	9263	12.6					
Dec13					73200	66141	7059	9.6					
Jan14					90043	82216	7827	8.7					
Feb14					87489	87588	-99	-0.1					
Mar14					78949	87661	11268	14.3					
Apr14					72114	89208	3906	5.4					
May14					54872	59643	-4672	-8.5					
Jun14					54972	49869	6002	10.9					
Jul14	14/15				54968	45068	16100	23.8			113346	13.2%	
Aug14					46980	43035	3945	8.4					
Sep14					56496	48561	7935	14.0					
Oct14					82134	82410	-276	-0.4					
Nov14					84387	84387	0	0.0					
Dec14					78467	69590	8877	11.3					
Jan15					92663	89382	3281	3.5					
Feb15					84160	87352	13408	15.9					
Mar15					82000	70602	11398	13.9					
Apr15					88984	67711	21273	23.9					
May15					73091	60982	12109	16.6					
Jun15					66976	56044	834	1.5					
Jul15	15/16				52752	39409	13343	25.3			120689	15.5%	
Aug15					47740	44229	3511	7.4					
Sep15					57422	49750	8672	15.1					
Oct15					68045	59439	8606	12.6					
Nov15					89720	72602	17118	19.1					
Dec15					80914	82780	18134	22.4					
Jan16					82707	80714	387	0.4					
Feb16					82958	74230	8728	10.5					
Mar16					55315	41640	13675	24.7					
Apr16					56150	50167	5983	10.6					
May16					54678	43606	11173	20.4					
Jun16					51155	39022	12133	23.7					
Jul16	16/17				55679	42553	13126	23.6			89636	13.6%	
Aug16					41474	42503	-1029	-2.5					
Sep16					51197	39764	11433	22.3					
Oct16					46202	50379	-4177	-9.0					
Nov16					59848	43485	16363	25.9					
Dec16					84533	60683	23850	27.9					
Jan17					68013	60347	7666	11.3					
Feb17					65320	49431	15889	24.3					
Mar17					54249	43534	10315	19.0					
Apr17					51845	50090	1755	3.4					
May17					54057	43067	10990	20.3					
Jun17					48168	43313	4855	10.1					

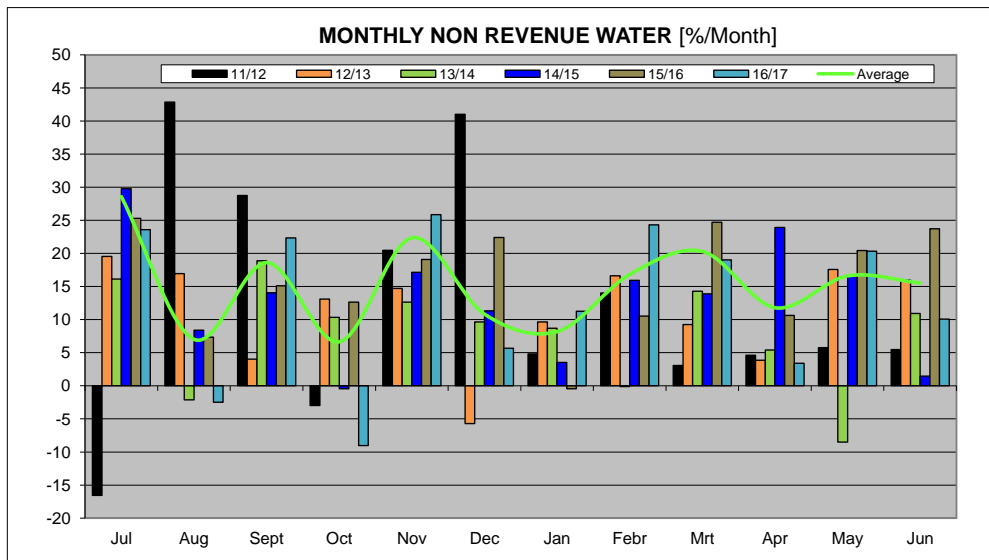
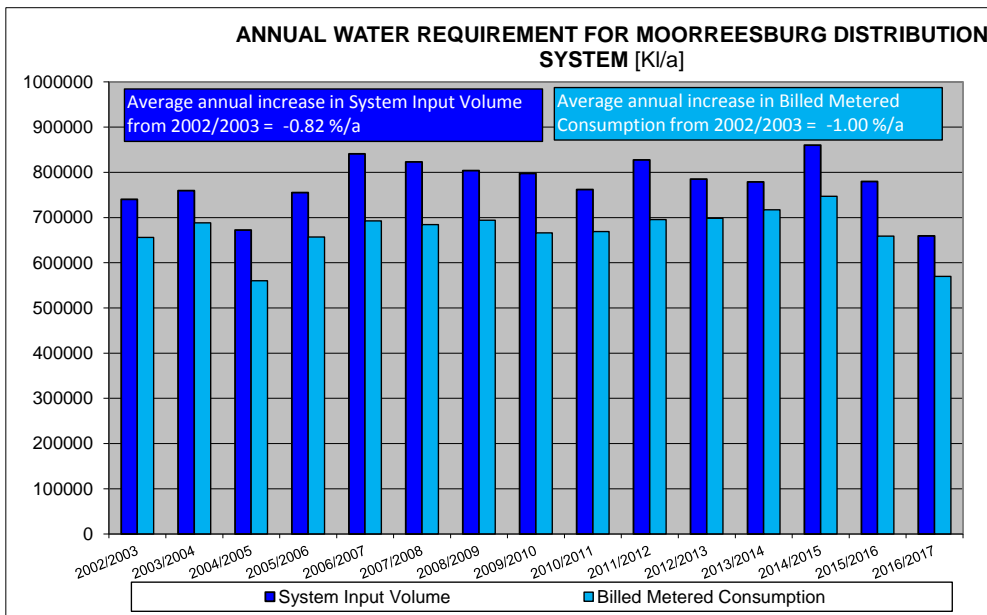
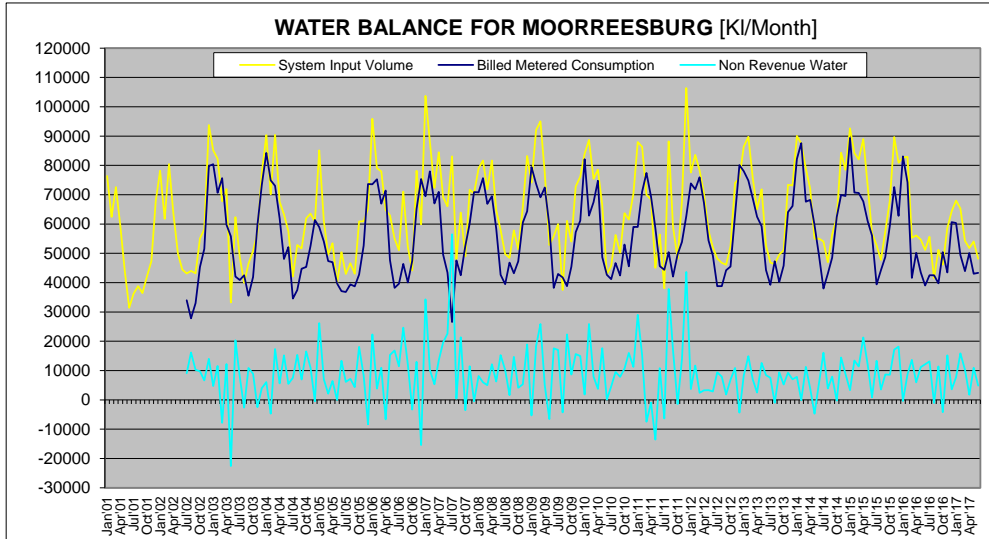
ANNUAL TOTALS				
Year	System Input Volume	Billed Metered Consumption	NRW m³	NRW %
2001/2002	647020			
2002/2003	740349	655853	84196	11.4%
2003/2004	759670	688137	71533	9.4%
2004/2005	672255	560300	111956	16.7%
2005/2006	755340	658977	96363	13.0%
2006/2007	840580	692551	148029	17.6%
2007/2008	822940	684331	138609	16.8%
2008/2009	803680	694108	109572	13.6%
2009/2010	797450	669921	131529	16.5%
2010/2011	762024	688992	93032	12.2%
2011/2012	827452	695643	131849	15.9%
2012/2013	798340	696483	86457	11.0%
2013/2014	778942	717143	61799	7.9%
2014/2015	860288	746942	113346	13.2%
2015/2016	779557	658968	120689	15.5%
2016/2017	658180	605545	89636	13.6%

Water Balance Components		Water Balance Volumes					
Component	Units	2011/2012	2012/2013	2013/2014	2014/2015	2015/2016	2016/2017
Consumer Units	Number of connections	3014	3017	3023	3030	3041	3023
System Input Volume	l/connection/day	752	706	778	778	702	597
Average Billed Metered Cons.	l/connection/day	632	634	650	675	594	516
Non-Revenue Water	l/connection/day	120	78	122	102	109	81

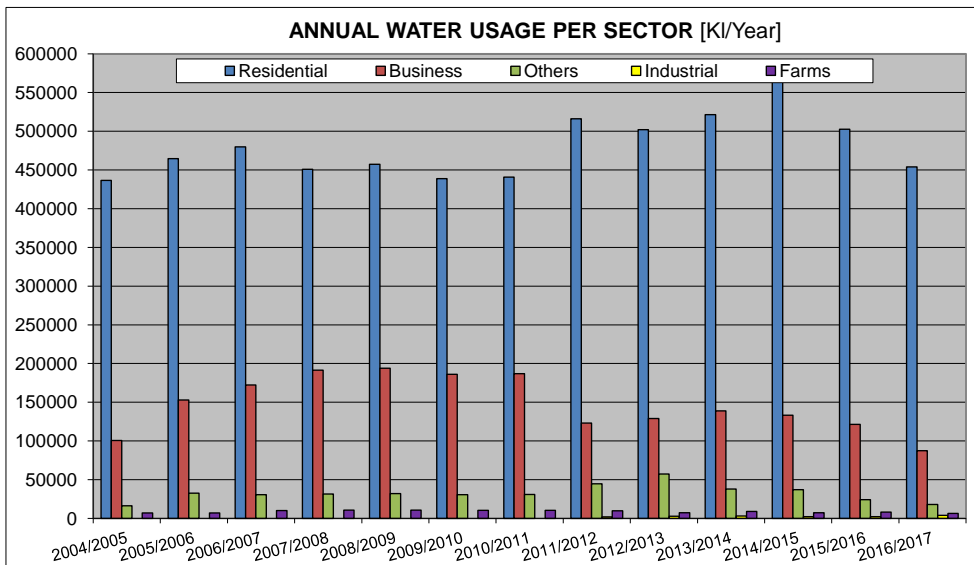
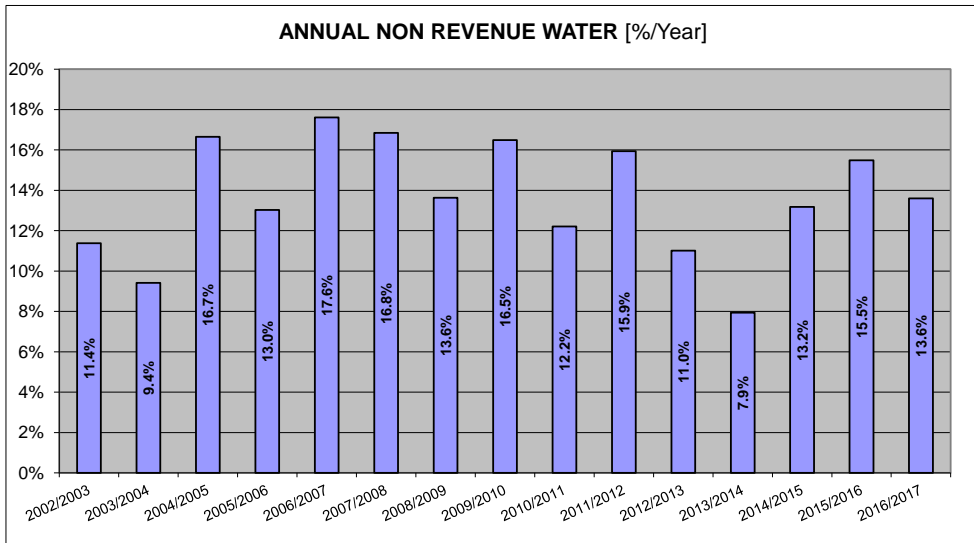
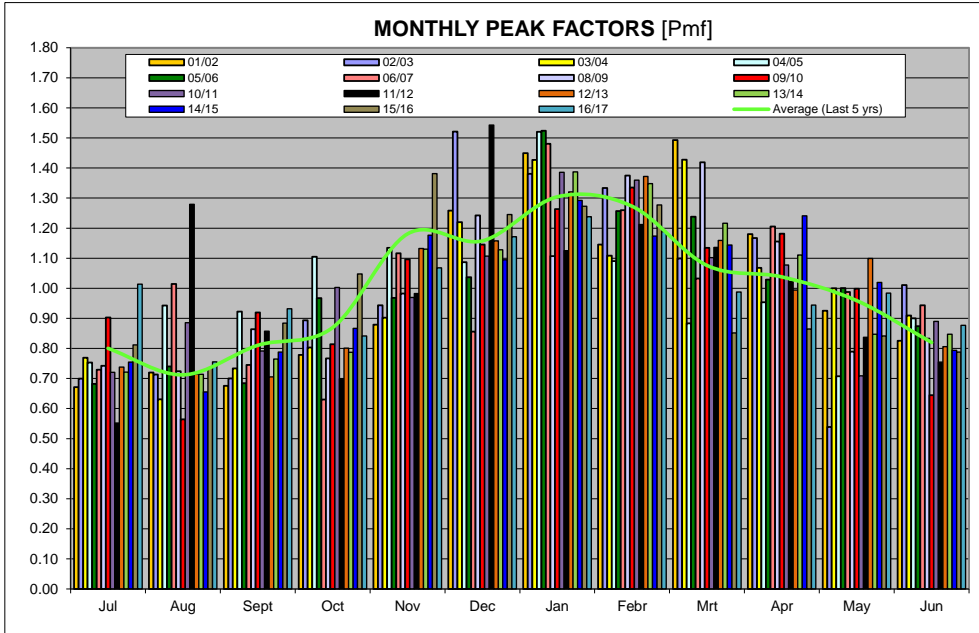
Water Balance Components		Percentage Change in Volumes in l/connection/day, year on year					
Component	Units	2011/2012	2012/2013	2013/2014	2014/2015	2015/2016	2016/2017
System Input Volume	% Change in Volume	-	-5.24%	-0.96%	10.19%	-9.71%	-14.94%
Average Billed Metered Cons.	% Change in Volume	-	0.31%	2.47%	3.91%	-12.11%	-13.04%
Non-Revenue Water	% Change in Volume	-	-34.49%	-28.66%	82.99%	6.09%	-25.29%

Water Balance Components		Did volume in l/connection/day Rise or Fall, year on year?					
Component	Units	2011/2012	2012/2013	2013/2014	2014/2015	2015/2016	2016/2017
System Input Volume	Rise or Fall	-	Fall	Fall	Fall	Fall	Fall
Average Billed Metered Cons.	Rise or Fall	-	Rise	Rise	Rise	Fall	Fall
Non-Revenue Water	Rise or Fall	-	Fall	Fall	Rise	Rise	Fall

WATER BALANCE AND USAGE FOR MOORREESBURG DISTRIBUTION SYTEM



WATER BALANCE AND USAGE FOR MOORREESBURG DISTRIBUTION SYTEM



WATER BALANCE AND USAGE FOR MOORREESBURG DISTRIBUTION SYTEM

