

SWARTLAND MUNICIPALITY																
Malmesbury, Abbotdale, Kalbaskraal, Riverlands, Chatsworth																
Month	Year	BULK WATER SUPPLY				TREATED WATER SUPPLY								TOTALS (ONLY NETWORK NRW)		
		Raw Water Supply	System Input Volume	Monthly NRW [m³]	Monthly NRW [%]	Boreholes	Paardeberg Dam	WCDM	Total System Input Volume	Billed Metered Consumption	Monthly NRW [m³]	Monthly NRW [%]	Monthly NRW [m³]	Monthly NRW [%]	Annual NRW [m³]	Annual NRW [%]
Jan01	00/01							276500	276500							
Feb01								195120	195120							
Mtr01								249450	249450							
Apr01								241850	241850							
May01								170940	170940							
Jun01								124650	124650							
Jul01								161890	161890							
Aug01								143370	143370							
Sep01								149620	149620							
Oct01								197760	197760							
Nov01								197106	197106							
Dec01								183306	183306							
Jan02	01/02							326296	326296							
Feb02								241570	241570							
Mtr02								251730	251730							
Apr02								213300	213300							
May02								144360	144360							
Jun02								161090	161090							
Jul02								149070	149070	142296	8884	5.8	8884	5.8		
Aug02								129210	129210	133061	-3851	-3.0	-3851	-3.0		
Sep02								194880	194880	139432	55448	28.5	55448	28.5		
Oct02								159750	159750	159551	-201	-0.1	-201	-0.1		
Nov02								178610	178610	176336	2274	1.3	2274	1.3		
Dec02								258660	258660	241695	16965	6.6	16965	6.6	218886	8.7%
Jan03	02/03					4320	3289	282000	250756	38853	13.4	38853	13.4			
Feb03						5217	15212	270310	290739	248007	44732	15.4	44732	15.4		
Mtr03						3027	24276	237090	265173	247801	17272	6.5	17272	6.5		
Apr03						3014	11729	182600	197343	191012	6331	3.2	6331	3.2		
May03						4119	53	187500	191672	207038	-15366	-8.0	-15366	-8.0		
Jun03						2525	192	198740	201857	185112	48745	23.2	48745	23.2		
Jul03						2546	1321	153800	157667	154580	3087	2.0	3087	2.0		
Aug03						2782	17535	156840	177157	137944	39213	22.1	39213	22.1		
Sep03						3159	9983	173670	187012	154403	32609	17.4	32609	17.4		
Oct03						2900	13138	164900	180638	146485	34153	16.9	34153	16.9		
Nov03						5493	5496	205790	216179	182625	34154	15.8	34154	15.8		
Dec03						3429	5484	252800	261713	197283	64430	24.6	64430	24.6		
Jan04	03/04					4947	287110	292057	263602	28455	9.7	28455	9.7			
Feb04						7024	4823	235189	239283	236761	2502	1.0	2502	1.0		
Mtr04						3320	4189	212566	216755	254752	-37997	-17.5	-37997	-17.5		
Apr04						4944	173953	178317	207049	-28732	-16.1	-28732	-16.1			
May04						3923	22387	227290	173196	54154	23.8	54154	23.8			
Jun04						3074	238110	241184	143859	53275	23.8	53275	23.8			
Jul04						4798	12975	139890	157463	149699	7764	4.9	7764	4.9		
Aug04						4500	11726	228626	228626	148835	79991	35.0	79991	35.0		
Sep04						5733	4287	180640	190680	161987	28673	15.0	28673	15.0		
Oct04						7024	3828	232650	248602	177866	70736	28.5	70736	28.5		
Nov04						7454	3321	147880	158455	173294	-14839	-9.4	-14839	-9.4		
Dec04						9022	4006	216600	229528	187009	42519	18.5	42519	18.5		
Jan05	04/05					11970	2719	226930	305319	194248	111071	36.4	111071	36.4		
Feb05						11123	6007	220830	239860	169574	41386	17.2	41386	17.2		
Mtr05						6641	1142	180150	187933	169828	19005	10.1	19005	10.1		
Apr05						7118	3616	177090	187824	177308	10516	5.6	10516	5.6		
May05						4967	10458	173230	188653	143987	44716	23.7	44716	23.7		
Jun05						3723	39268	158940	197181	171614	70167	39.5	70167	39.5		
Jul05						3513	1908	146330	151751	138752	12999	8.6	12999	8.6		
Aug05						3497	8774	194360	206631	129735	76896	37.2	76896	37.2		
Sep05						3153	5756	163600	224259	199121	65138	36.0	65138	36.0		
Oct05						4286	49043	199800	253119	144882	108238	42.7	108238	42.7		
Nov05						4441	19399	211140	234980	152877	62103	34.9	62103	34.9		
Dec05						2368	23218	227783	253369	159932	57437	22.7	57437	22.7		
Jan06	05/06					3000	0	299177	299177	36396	14.3	36396	14.3			
Feb06						3000	0	274520	277520	236569	40951	14.8	40951	14.8		
Mtr06						3000	0	233440	226340	165803	60537	26.7	60537	26.7		
Apr06						3000	0	214350	217350	254552	-37202	-17.1	-37202	-17.1		
May06						3000	0	149690	152690	139838	25752	16.9	25752	16.9		
Jun06						3000	0	160830	163830	148237	15593	9.5	15593	9.5		
Jul06						3000	0	174250	177250	158640	18610	10.5	18610	10.5		
Aug06						3000	0	183800	191380	142894	48486	25.3	48486	25.3		
Sep06						3000	0	186930	198930	157022	34228	18.0	34228	18.0		
Oct06						3000	0	204310	207310	175589	31721	15.3	31721	15.3		
Nov06						3000	0	241870	244870	185173	59697	24.4	59697	24.4		
Dec06						3000	0	187740	190740	230598	-38818	-20.9	-38818	-20.9		
Jan07	06/07					3000	0	349640	352640	216747	132933	39.5	132933	39.5		
Feb07						3000	0	230080	233080	244972	48108	16.4	48108	16.4		
Mtr07						3000	0	233620	236620	217051	19469	8.2	19469	8.2		
Apr07						3000	0	258630	261630	241896	19774	7.6	19774	7.6		
May07						3000	0	286390	289390	198363	21017	10.0	21017	10.0		
Jun07						3000	0	198760	201760	178904	21956	10.9	21956	10.9		
Jul07						3000	0	190720	193720	152148	41572	21.5	41572	21.5		
Aug07						3000	0	194010	197010	153176	43334	22.2	43334	22.2		
Sep07						3000	0	201480	204480	171683	32797	16.0	32797	16.0		
Oct07						3000	0	251360	254360	185299	69061	27.2	69061	27.2		
Nov07						3000	0	241470	244470	203903	40567	16.6	40567	16.6		
Dec07						3000	0	257470	260470	212178	48677	19.0	48677	19.0		
Jan08	07/08					3000	0	289390	292390	229546	64384	22.0	64384	22.0		
Feb08						3000	0	331100	334100	260244	73856	22.1	73856	22.1		
Mtr08						3000	0	280900	283900	252464	31436	11.1	31436	11.1		
Apr08						3000	0	332100	335100	234364	100736	23.5	100736	23.5		
May08						3000	0	233510	236510	239558	9952	4.2	9952	4.2		
Jun08						3000	0	186530	189530	162544	26986	14.2	26986	14.2		
Jul08						3000	0	229410	232410	182440	49970	16.3	49970	16.3		
Aug08						3000	0	219220	222220	171918	50802	23.8	50802	23.8		
Sep08						3000	0	224700	227700	173767	53933	23.7	53933	23.7		
Oct08						3000	0	226790	229790	181011	48779	21.2	48779	21.2		
Nov08						3000	0	299590	302590	233007	29543	11.3	29543	11.3		
Dec08						3000	0	247560	250560	246601	3959	1.6	3959	1.6		
Jan09	08/09					3000	0	317520	320520	276645	43875	13.7	43875	13.7		
Feb09						3000	0	328930	331930	264036	67894	20.5	67894	20.5		
Mtr09						3000	0	299500	302500	267622	34878	11.5	34878	11.5		
Apr09																

SWARTLAND MUNICIPALITY																
Malmesbury, Abbotdale, Kalbaskraal, Riverlands, Chatsworth																
Month	Year	BULK WATER SUPPLY				TREATED WATER SUPPLY							TOTALS (ONLY NETWORK NRW)			
		Raw Water Supply	System Input Volume	Monthly NRW [m³]	Monthly NRW [%]	Boreholes	Paardeberg Dam	WCDM	Total System Input Volume	Billed Metered Consumption	Monthly NRW [m³]	Monthly NRW [%]	Monthly NRW [m³]	Monthly NRW [%]	Annual NRW [m³]	Annual NRW [%]
Jul12	12/13					193	10884	192935	204012	199523	44489	21.8	44489	21.8	741701	23.6%
Aug12						211	10157	181943	192311	181175	31136	16.2	31136	16.2		
Sep12						135	16640	175532	192307	178451	15856	8.2	15856	8.2		
Oct12						251	14260	242444	218775	178148	49827	19.6	49827	19.6		
Nov12						139	23515	250048	273705	188831	84874	31.0	84874	31.0		
Dec12						777	25792	275223	301792	263020	38772	12.8	38772	12.8		
Jan13						2348	11138	325855	339942	263882	77065	22.7	77065	22.7		
Feb13						2468	26408	337911	366785	263126	103659	28.3	103659	28.3		
Mar13						2636	20507	266378	289521	264174	25347	8.8	25347	8.8		
Apr13						789	24344	247072	272185	112634	159551	58.6	159551	58.6		
May13						849	16111	235894	232654	194094	56560	23.2	56560	23.2		
Jun13						1214	12953	222816	245423	183673	61750	25.2	61750	25.2		
Jul13	13/14					528	690	184302	185520	155046	30474	16.4	30474	16.4		
Aug13						971	16851	194345	212167	170845	41322	19.5	41322	19.5		
Sep13						953	13158	219878	233989	163764	70225	30.0	70225	30.0		
Oct13						472	16373	188802	205447	160838	44609	21.7	44609	21.7		
Nov13						420	26072	242950	299442	203432	66010	24.5	66010	24.5		
Dec13						958	37287	247979	286224	229642	69582	21.2	69582	21.2		
Jan14						2606	25756	307742	336104	264681	71423	21.3	71423	21.3		
Feb14						1489	25755	303898	331142	262886	69256	20.6	69256	20.6		
Mar14						1525	29702	288923	311650	360380	46339	15.8	46339	15.8		
Apr14						2393	21380	271793	295566	227004	68562	23.2	68562	23.2		
May14						2249	13454	240731	258404	234477	21927	8.8	21927	8.8		
Jun14						1645	14213	202096	217944	167566	30378	13.9	30378	13.9		
Jul14	14/15					415	10181	215247	225843	156289	69555	30.8	69555	30.8		
Aug14						566	9983	211258	220987	162022	38885	17.6	38885	17.6		
Sep14						2852	7741	216747	237170	174059	53111	23.4	53111	23.4		
Oct14						1976	23821	234884	260781	190844	69937	26.8	69937	26.8		
Nov14						677	18666	275794	295137	237865	57272	19.4	57272	19.4		
Dec14						763	16013	318223	334799	241174	93625	29.0	93625	29.0		
Jan15						94	2814	328997	331505	314299	17206	5.2	17206	5.2		
Feb15						6164	4462	315614	326240	267631	68609	21.0	68609	21.0		
Mar15						4682	4479	294400	303961	268284	37277	12.3	37277	12.3		
Apr15						2996	3037	319545	336178	263563	71855	22.0	71855	22.0		
May15						4307	2741	267573	274621	243874	30747	11.2	30747	11.2		
Jun15						3319	2500	217948	232787	215206	8581	3.8	8581	3.8		
Jul15	15/16					1028	565	244041	248614	163740	81874	37.4	81874	37.4		
Aug15						0	233	229031	229264	177384	51880	22.6	51880	22.6		
Sep15						2174	5011	259952	286137	185051	81086	30.5	81086	30.5		
Oct15						5	2309	284478	286793	293386	57407	21.5	57407	21.5		
Nov15						2031	801	320690	323422	248164	75258	23.3	75258	23.3		
Dec15						1472	1458	301604	304534	230684	73840	24.2	73840	24.2		
Jan16						1345	1854	315205	325137	258836	65301	20.1	65301	20.1		
Feb16						8781	1335	310499	320815	284300	36315	11.3	36315	11.3		
Mar16						6387	14	279087	284488	190436	94052	33.1	94052	33.1		
Apr16						2416	13	152529	154669	164261	26329	16.9	26329	16.9		
May16						489	0	213552	214051	172575	41478	19.4	41478	19.4		
Jun16						845	0	205498	206343	167181	39182	19.0	39182	19.0		
Jul16	16/17					1769	18	191774	193561	170925	22836	11.7	22836	11.7		
Aug16						1541	7	205440	207028	178915	28113	13.6	28113	13.6		
Sep16						2388	36	196680	199084	208825	-10741	-5.4	-10741	-5.4		
Oct16						1348	14	202255	203417	176207	27210	13.4	27210	13.4		
Nov16						0	0	256386	256386	203125	53261	20.8	53261	20.8		
Dec16						1	10	266305	266316	228666	39450	14.8	39450	14.8		
Jan17						2775	12	278219	281006	234719	46287	16.5	46287	16.5		
Feb17						4338	7	268972	281317	214687	46470	17.8	46470	17.8		
Mar17						5280	1	219466	223747	193781	29966	13.4	29966	13.4		
Apr17						2454	3	198494	200951	188305	12646	6.3	12646	6.3		
May17						4218	4	215263	219485	175272	44213	20.1	44213	20.1		
Jun17						4745	2	191839	196596	171165	25401	12.8	25401	12.8		

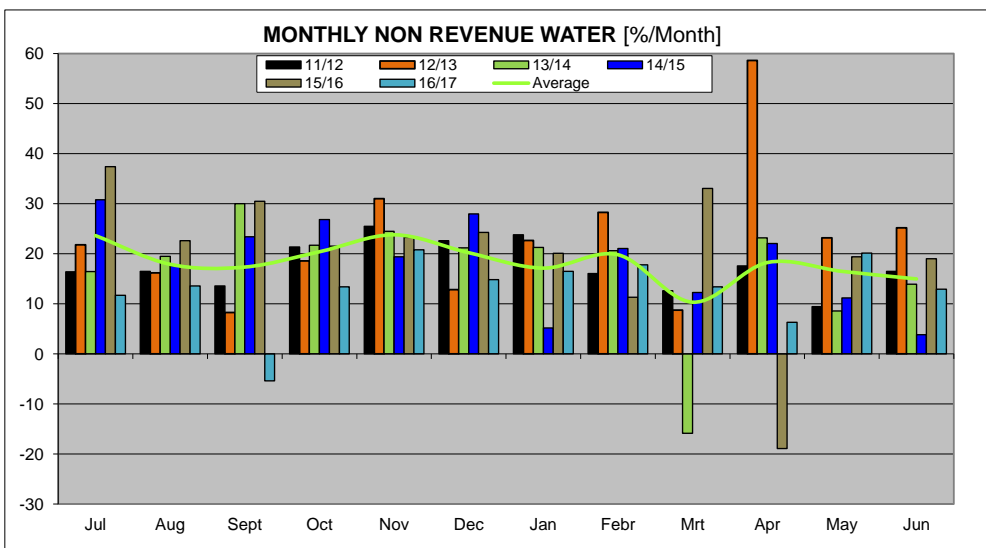
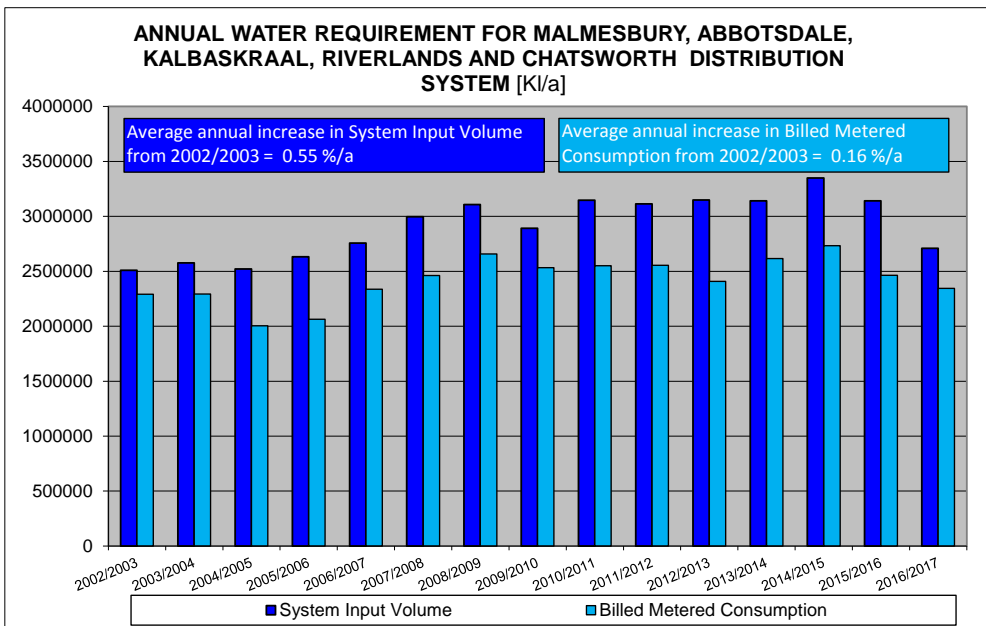
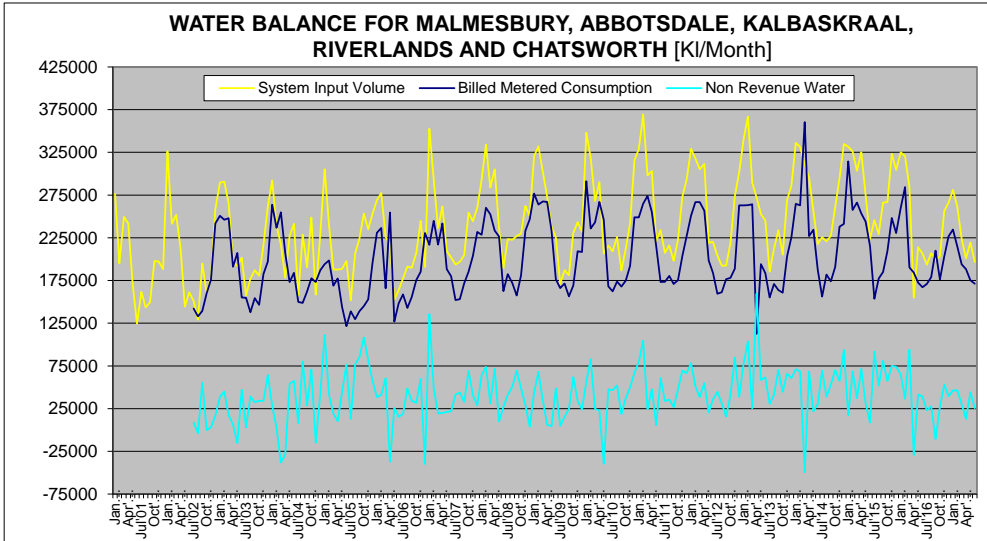
ANNUAL TOTALS				
Year	System Input Volume	Billed Metered Consumption	NRW m³	NRW %
2001/2002	2376180	2296587	218688	8.7%
2002/2003	2594473	2296587	218688	8.7%
2003/2004	2575852	2292479	203353	11.0%
2004/2005	2521004	2003099	517905	20.5%
2005/2006	2631087	2064270	566807	21.5%
2006/2007	2764470	2337350	419120	15.2%
2007/2008	2986580	2461823	534757	17.9%
2008/2009	3107700	2657791	449909	14.5%
2009/2010	2892103	2531108	359994	12.4%
2010/2011	3146105	2550992	595113	18.9%
2011/2012	3113432	2554057	559375	18.0%
2012/2013	3148412	2407711	741701	23.6%
2013/2014	3140989	2616661	524338	16.7%
2014/2015	3348489	2733069	616420	18.4%
2015/2016	3141358	2463008	678348	21.6%
2016/2017	2798884	2343872	364912	13.0%

Water Balance Components		Water Balance Volumes					
Component	Units	2011/2012	2012/2013	2013/2014	2014/2015	2015/2016	2016/2017
Consumer Lines	Number of connections	9198	9449	9578	9856	10148	10417
System Input Volume	l/connection/day	927	813	898	931	848	712
Average Billed Metered Cons.	l/connection/day	761	695	748	750	665	616
Non-Revenue Water	l/connection/day	167	215	150	171	183	95

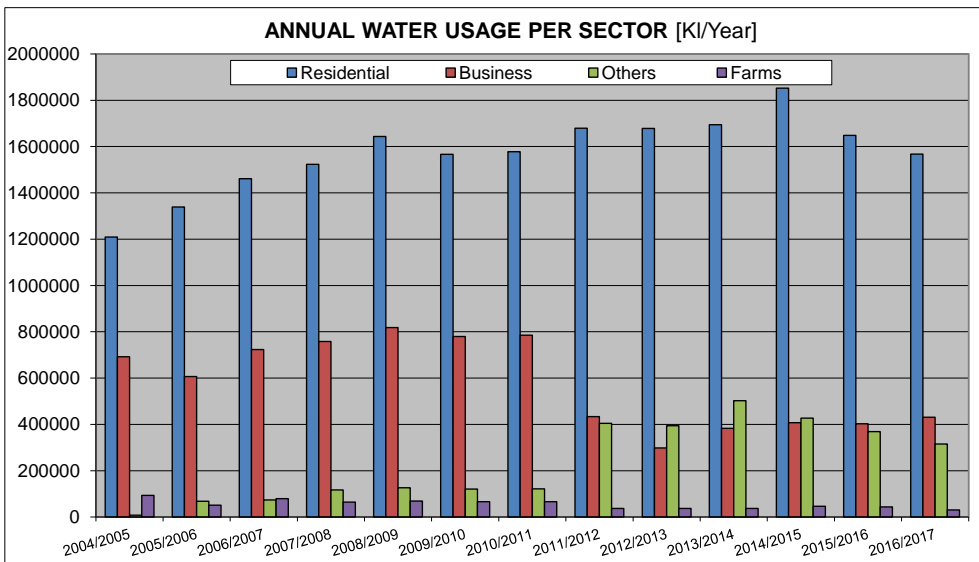
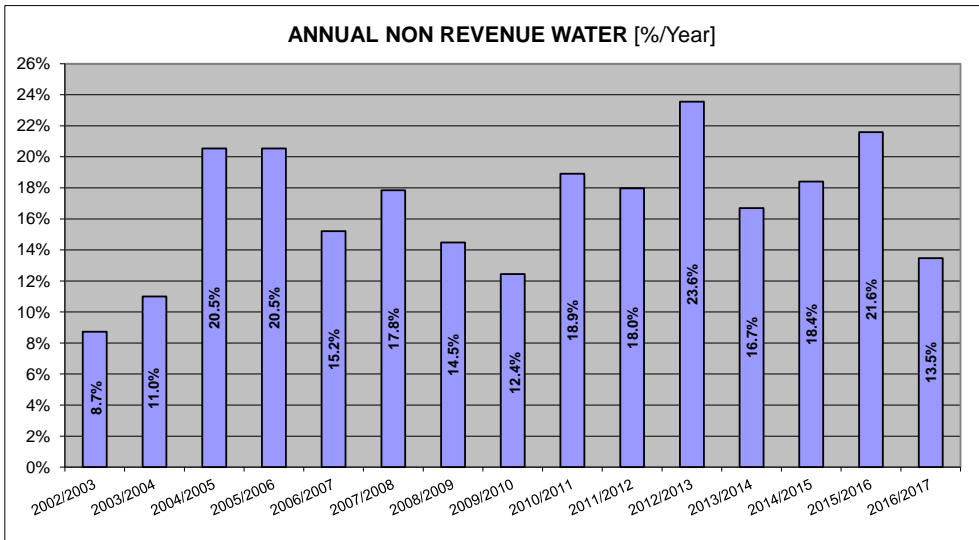
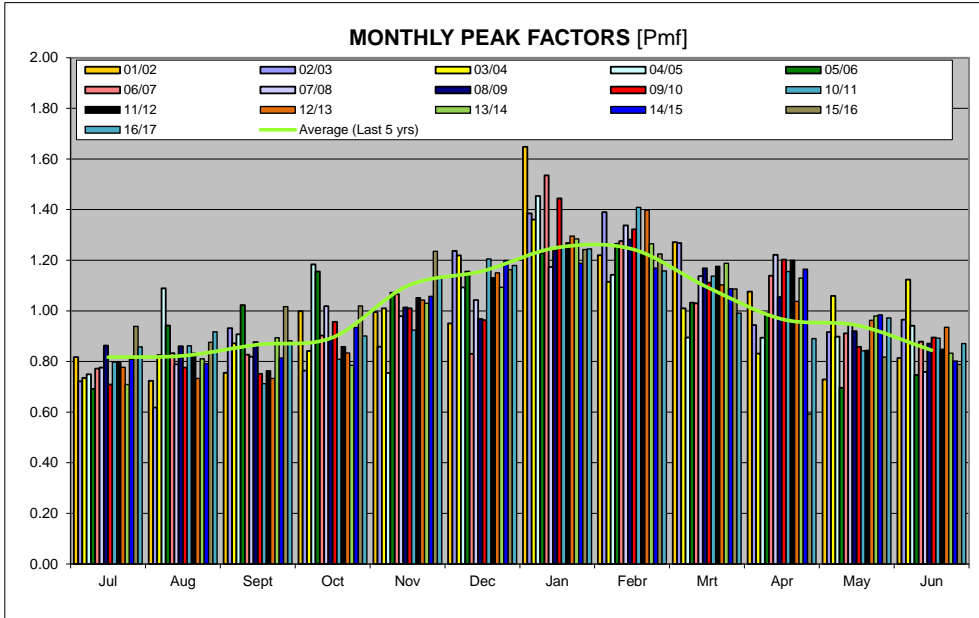
Water Balance Components		Percentage Change in Volumes in l/connection/day, year on year					
Component	Units	2011/2012	2012/2013	2013/2014	2014/2015	2015/2016	2016/2017
System Input Volume	% Change in Volume	-	-1.53%	-1.61%	3.63%	-8.91%	-15.99%
Average Billed Metered Cons.	% Change in Volume	-	-4.23%	7.21%	1.31%	-12.47%	-7.29%
Non-Revenue Water	% Change in Volume	-	29.07%	-30.24%	14.22%	6.88%	-47.59%

Water Balance Components		Did volume in l/connection/day Rise or Fall, year on year?					
Component	Units	2011/2012	2012/2013	2013/2014	2014/2015	2015/2016	2016/2017
System Input Volume	Rise or Fall	-	Fall	Fall	Rise	Fall	Fall
Average Billed Metered Cons.	Rise or Fall	-	Fall	Rise	Rise	Fall	Fall
Non-Revenue Water	Rise or Fall	-	Rise	Fall	Rise	Rise	Fall

WATER BALANCE AND USAGE FOR MALMESBURY DISTRIBUTION SYSTEM



WATER BALANCE AND USAGE FOR MALMESBURY DISTRIBUTION SYSTEM



WATER BALANCE AND USAGE FOR MALMESBURY DISTRIBUTION SYSTEM

