

SWARTLAND MUNICIPALITY													
Darling													
Month	Year	BULK WATER SUPPLY				TREATED WATER SUPPLY				TOTALS (ONLY NETWORK NRW)			
		Raw Water Supply	System Input Volume	Monthly NRW [m³]	Monthly NRW [%]	System Input Volume	Billed Metered Consumption	Monthly NRW [m³]	Monthly NRW [%]	Monthly NRW [m³]	Monthly NRW [%]	Annual NRW [m³]	Annual NRW [%]
Jul11	11/12					49205	44209	4997	10.2	4997	10.2	45687	6.3%
Aug11						53514	49465	4059	7.6	4059	7.6		
Sep11						51355	39777	11598	22.6	11598	22.6		
Oct11						54607	50088	4519	8.3	4519	8.3		
Nov11						58831	47462	11369	19.3	11369	19.3		
Dec11						62752	60448	2304	3.7	2304	3.7		
Jan12						73974	75749	-1775	-2.4	-1775	-2.4		
Feb12						73295	61300	11995	16.4	11995	16.4		
Mar12						65682	69850	-4168	-6.3	-4168	-6.3		
Apr12						66989	67911	-922	-1.4	-922	-1.4		
May12						54170	51731	2439	4.5	2439	4.5		
Jun12						57816	58544	-728	-1.3	-728	-1.3		
Jul12	12/13				47231	46492	739	1.6	739	1.6			
Aug12					52955	42633	10322	19.5	10322	19.5			
Sep12					47971	49175	-1204	-2.5	-1204	-2.5			
Oct12					50955	50237	718	1.4	718	1.4			
Nov12					58494	53179	5315	9.1	5315	9.1			
Dec12					59440	67708	-8268	-13.9	-8268	-13.9			
Jan13					69902	73559	-3657	-5.2	-3657	-5.2			
Feb13					67897	61435	6462	9.5	6462	9.5			
Mar13					59145	62869	-3724	-6.3	-3724	-6.3			
Apr13					57164	52722	4442	7.8	4442	7.8			
May13					53640	51493	2147	4.0	2147	4.0			
Jun13					52423	43236	9187	14.2	9187	14.2			
Jul13	13/14				41501	44293	-2792	-6.7	-2792	-6.7			
Aug13					46408	39422	6986	15.1	6986	15.1			
Sep13					46834	31372	15462	33.0	15462	33.0			
Oct13					45885	37770	8115	17.7	8115	17.7			
Nov13					57056	75704	-18648	-32.7	-18648	-32.7			
Dec13					55045	55184	-139	-0.3	-139	-0.3			
Jan14					71227	67609	3618	5.1	3618	5.1			
Feb14					66449	64691	1758	2.6	1758	2.6			
Mar14					60893	60812	81	0.1	81	0.1			
Apr14					56099	52793	3316	6.7	3316	6.7			
May14					49378	43178	6200	13.6	6200	13.6			
Jun14					41859	43736	-1877	-4.5	-1877	-4.5			
Jul14	14/15				45077	31945	13132	29.1	13132	29.1			
Aug14					46664	36871	9793	21.0	9793	21.0			
Sep14					48909	44627	4282	8.8	4282	8.8			
Oct14					53102	56228	-3126	-5.9	-3126	-5.9			
Nov14					61360	54152	7198	11.7	7198	11.7			
Dec14					66277	60530	5747	8.7	5747	8.7			
Jan15					72036	75671	-3635	-5.0	-3635	-5.0			
Feb15					68296	53315	14981	21.9	14981	21.9			
Mar15					66276	58413	7863	11.9	7863	11.9			
Apr15					71811	54412	17399	24.2	17399	24.2			
May15					52843	47067	5776	10.9	5776	10.9			
Jun15					46738	53574	-6836	-14.6	-6836	-14.6			
Jul15	15/16				47034	35669	11365	24.2	11365	24.2			
Aug15					52242	38085	14157	27.1	14157	27.1			
Sep15					46252	42901	3351	7.2	3351	7.2			
Oct15					59366	45974	13392	22.6	13392	22.6			
Nov15					68458	63354	5104	7.5	5104	7.5			
Dec15					90565	56288	4280	7.1	4280	7.1			
Jan16					74826	63308	11518	15.4	11518	15.4			
Feb16					67014	54734	12280	18.3	12280	18.3			
Mar16					47285	29243	18042	38.2	18042	38.2			
Apr16					47685	38967	8718	18.3	8718	18.3			
May16					45373	47242	-1869	-4.1	-1869	-4.1			
Jun16					45227	33049	12178	26.9	12178	26.9			
Jul16	16/17				43244	33820	9424	21.8	9424	21.8			
Aug16					44243	44262	-19	0.0	-19	0.0			
Sep16					47703	46079	1624	3.4	1624	3.4			
Oct16					55002	36664	18338	33.3	18338	33.3			
Nov16					48785	38016	10769	22.1	10769	22.1			
Dec16					56194	50660	5534	9.8	5534	9.8			
Jan17					61083	48778	12305	20.1	12305	20.1			
Feb17					55958	61840	-5882	-10.7	-5882	-10.7			
Mar17					51488	34045	17443	33.9	17443	33.9			
Apr17					47895	47307	588	1.2	588	1.2			
May17					47612	38178	9434	19.8	9434	19.8			
Jun17					44245	39494	4751	10.7	4751	10.7			

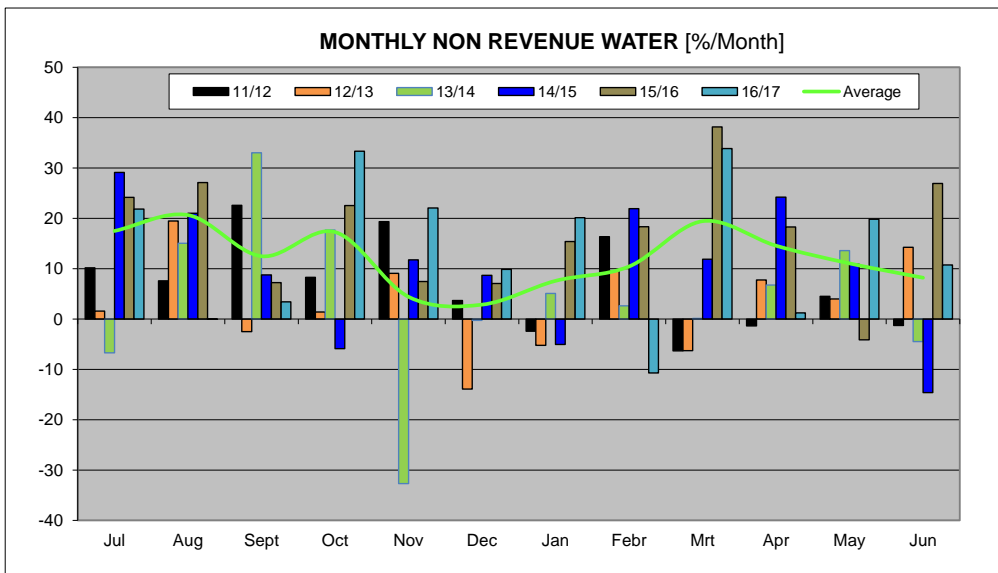
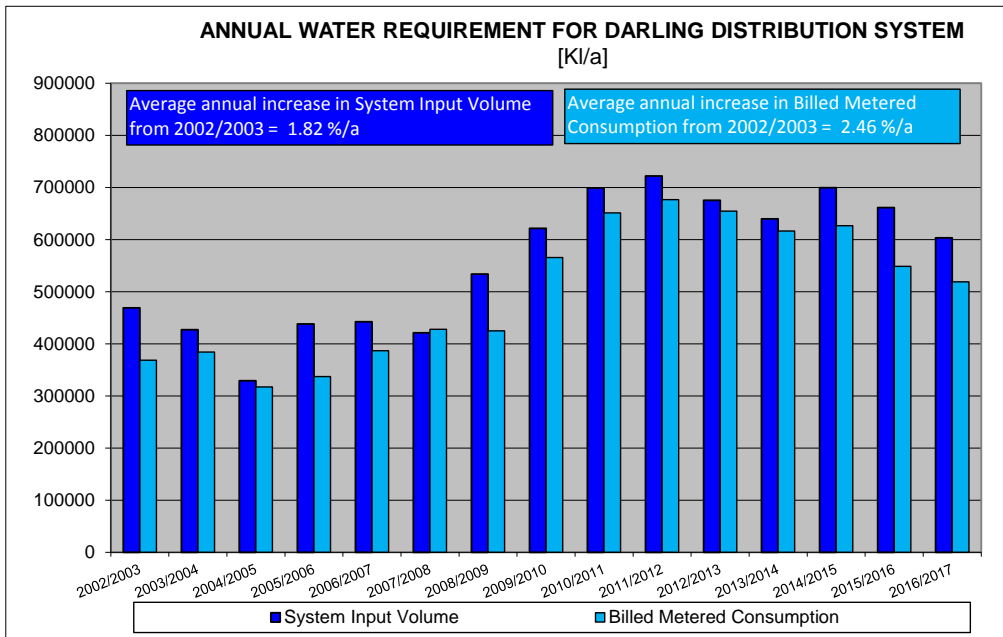
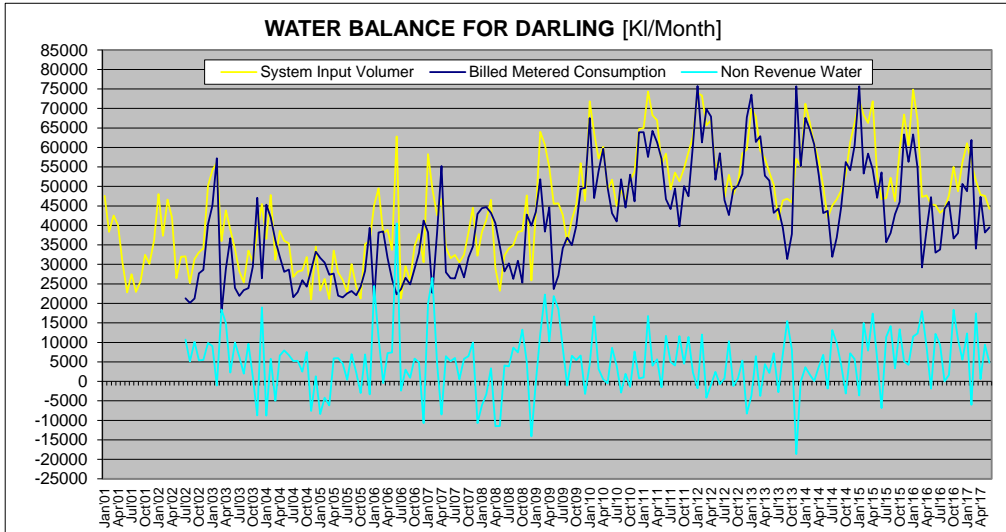
ANNUAL TOTALS				
Year	System Input Volume	Billed Metered Consumption	NRW m³	NRW %
2001/2002	407210			
2002/2003	468690	368709	100281	21.4%
2003/2004	427210	384476	42734	10.0%
2004/2005	329030	317224	11806	3.6%
2005/2006	437922	337200	100722	23.0%
2006/2007	442564	386820	55734	12.6%
2007/2008	421210	429072	-6862	-1.6%
2008/2009	533710	424793	108917	20.4%
2009/2010	621480	565785	55715	9.0%
2010/2011	699043	651406	47637	6.8%
2011/2012	722191	676504	45687	6.3%
2012/2013	675214	654737	20477	3.0%
2013/2014	639744	616564	23180	3.6%
2014/2015	699379	626825	72554	10.4%
2015/2016	661330	548814	112516	17.0%
2016/2017	603442	519223	84219	14.0%

Water Balance Components		Water Balance Volumes					
Component	Units	2011/2012	2012/2013	2013/2014	2014/2015	2015/2016	2016/2017
Consumer Units	Number of connections	2589	2598	2598	2595	2607	2598
System Input Volume	l/connection/day	764	712	675	738	695	636
Average Billed Metered Cons.	l/connection/day	716	690	650	662	577	548
Non-Revenue Water	l/connection/day	48	22	24	77	118	89

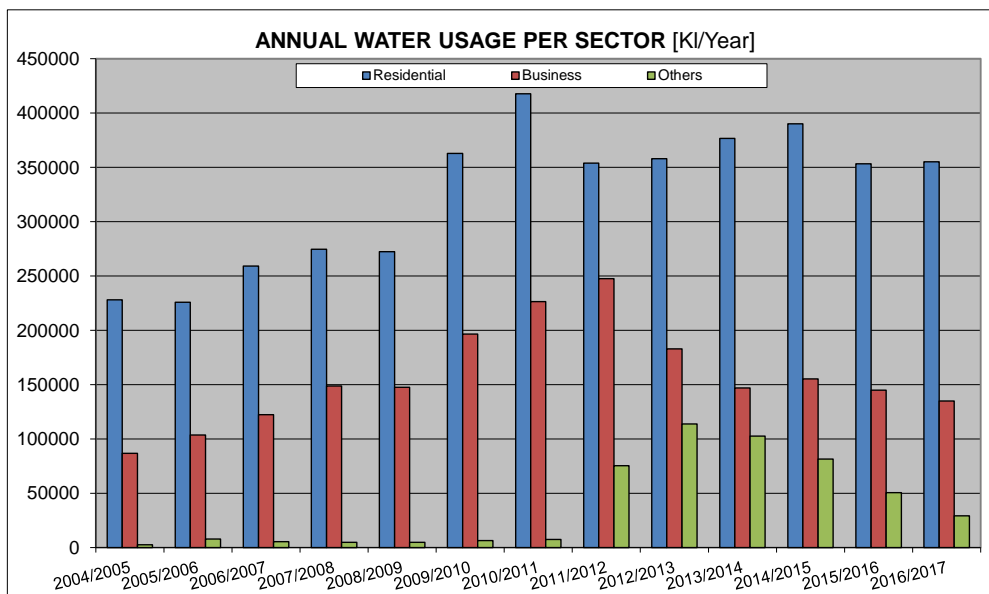
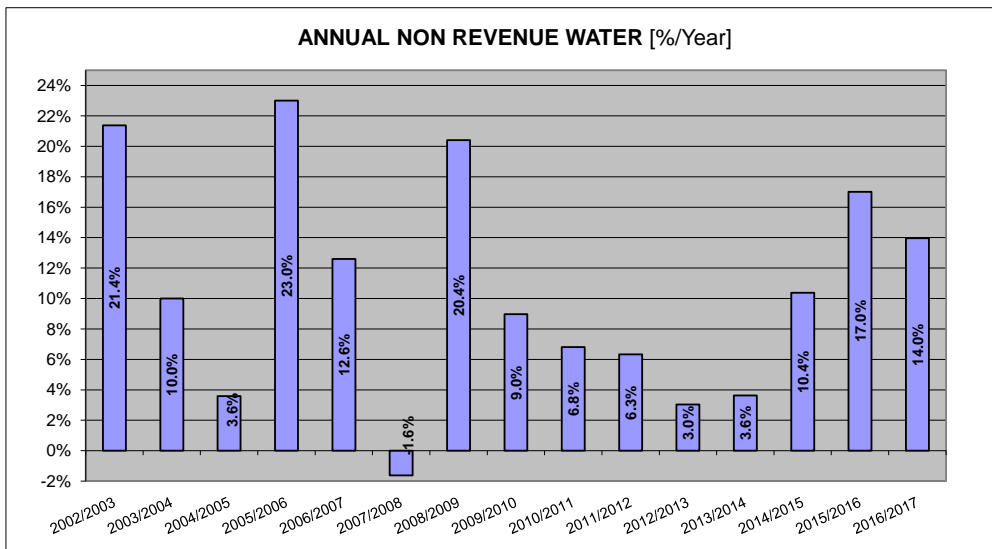
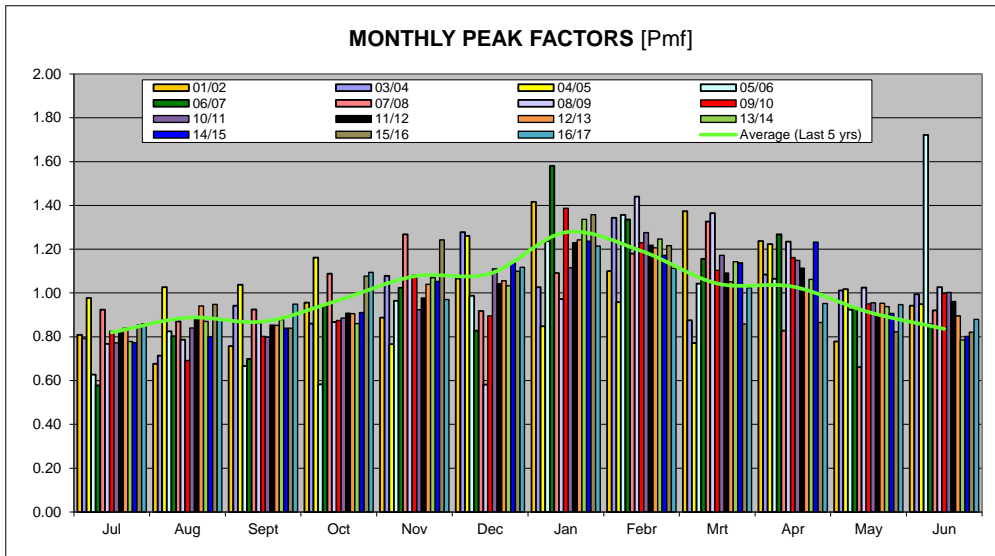
Water Balance Components		Percentage Change in Volumes in l/connection/day, year on year					
Component	Units	2011/2012	2012/2013	2013/2014	2014/2015	2015/2016	2016/2017
System Input Volume	% Change in Volume	-	-6.83%	-5.25%	9.45%	-5.88%	-8.44%
Average Billed Metered Cons.	% Change in Volume	-	-3.55%	-5.83%	1.78%	-12.85%	-5.06%
Non-Revenue Water	% Change in Volume	-	-55.34%	13.20%	213.36%	54.37%	-24.89%

Water Balance Components		Did volume in l/connection/day Rise or Fall, year on year?					
Component	Units	2011/2012	2012/2013	2013/2014	2014/2015	2015/2016	2016/2017
System Input Volume	Rise or Fall	-	Fall	Fall	Rise	Fall	Fall
Average Billed Metered Cons.	Rise or Fall	-	Fall	Fall	Rise	Fall	Fall
Non-Revenue Water	Rise or Fall	-	Fall	Rise	Rise	Rise	Fall

WATER BALANCE AND USAGE FOR DARLING DISTRIBUTION SYSTEM



WATER BALANCE AND USAGE FOR DARLING DISTRIBUTION SYSTEM



WATER BALANCE AND USAGE FOR DARLING DISTRIBUTION SYSTEM

