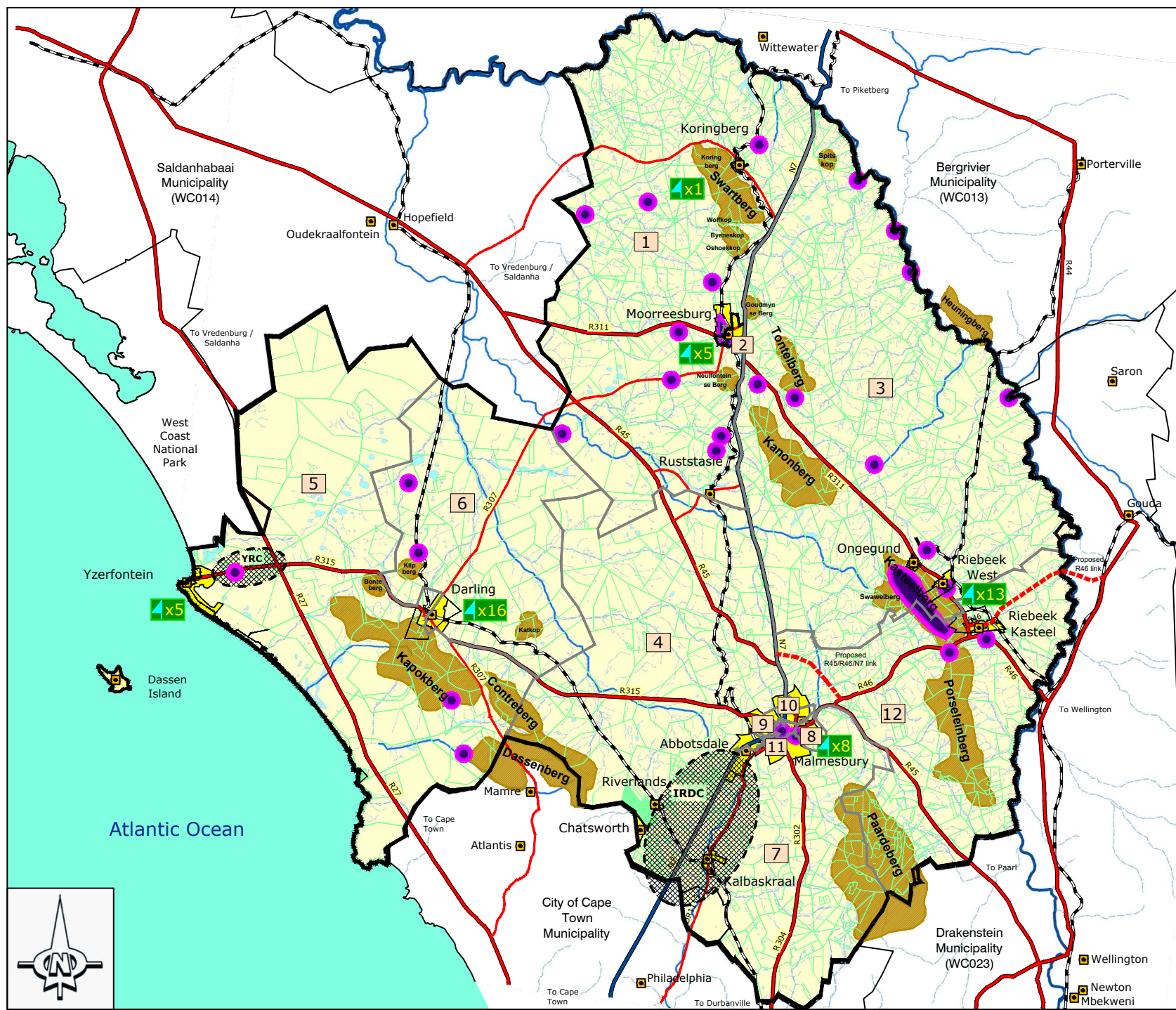


SWARTLAND MUNICIPALITY



STRATEGY 4 & 9:
Protect heritage resources & Grow cultural potential



KEY

- Towns / Urban areas
- N7 National Road
- Main Roads
- Secondary Roads
- Proposed R45/R46/N7 link
- Railway line
- Mountains and koppe
- Rivers and drainage

- Intensive Rural Development Corridor
- Yzerfontein Rural Corridor

- ### Tourism Development Areas
- Heritage sites
 - Festivals and celebrations

1 - 12 Swartland Wards

*** Note: Refer to Heritage Survey**

CREATED BY



C.K. RUMBOLL & PARTNERS
TOWN PLANNERS
PROFESSIONAL SURVEYORS
16 RAINIER STREET, MALMESBURY

