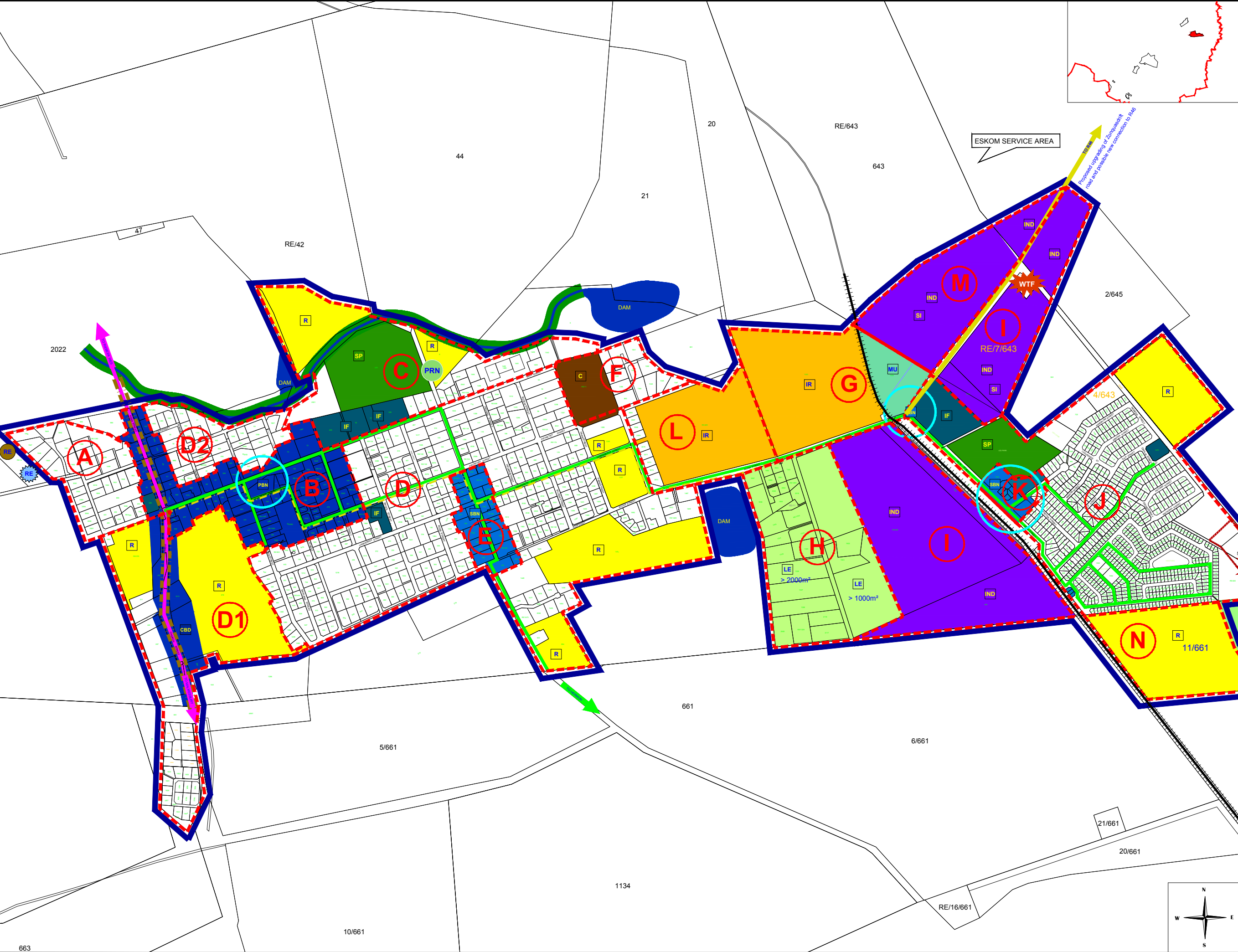


**KEY**

URBAN EDGE	
RESIDENTIAL	
INTEGRATED RESIDENTIAL DEVELOPMENT	
ESTATE ERVEN (RESIDENTIAL)	
PRIMARY BUSINESS NODE	
SECONDARY BUSINESS NODE	
MIXED USES: Light / Service Industry Commercial / Business Node	
INDUSTRIAL	
SERVICE INDUSTRY	
CENTRAL BUSINESS DISTRICT	
INSTITUTIONAL FACILITY	
CEMETERY	
URBAN AGRICULTURE	
SPORTS FACILITY	
PUBLIC RECREATIONAL NODE	
<b>INFRASTRUCTURE</b>	
ACTIVITY CORRIDOR	
ACTIVITY STREETS	
RAILWAY CONNECTION	
PROPOSED PEDESTRIAN NETWORK	
TOURISM ROUTES	
RIVER	
RIVER CORRIDOR	
DEVELOPMENTAL NODES	
RESERVOIR	
FUTURE RESERVOIR	
WASTEWATER TREATMENT WORKS New Sewer Pump Station with future upgrading potential	
WASTE MANAGEMENT SITE (Closed - await rehabilitation)	
WASTE TRANSFER FACILITY	



PROJECT:  
**SWARTLAND  
SPATIAL DEVELOPMENT FRAMEWORK**

CLIENT:  
  
SWARTLAND MUNICIPALITY

**RIEBEEK KASTEEL  
SPATIAL DEVELOPMENT  
LAND USE PROPOSALS**

PREPARED BY:  
  
C.K. RUMBOLL & PARTNERS  
TOWN & REGIONAL PLANNERS  
16 RAINIER STREET, MALMESBURY

AREA: SWARTLAND	DATE: MAY 2017
--------------------	-------------------

