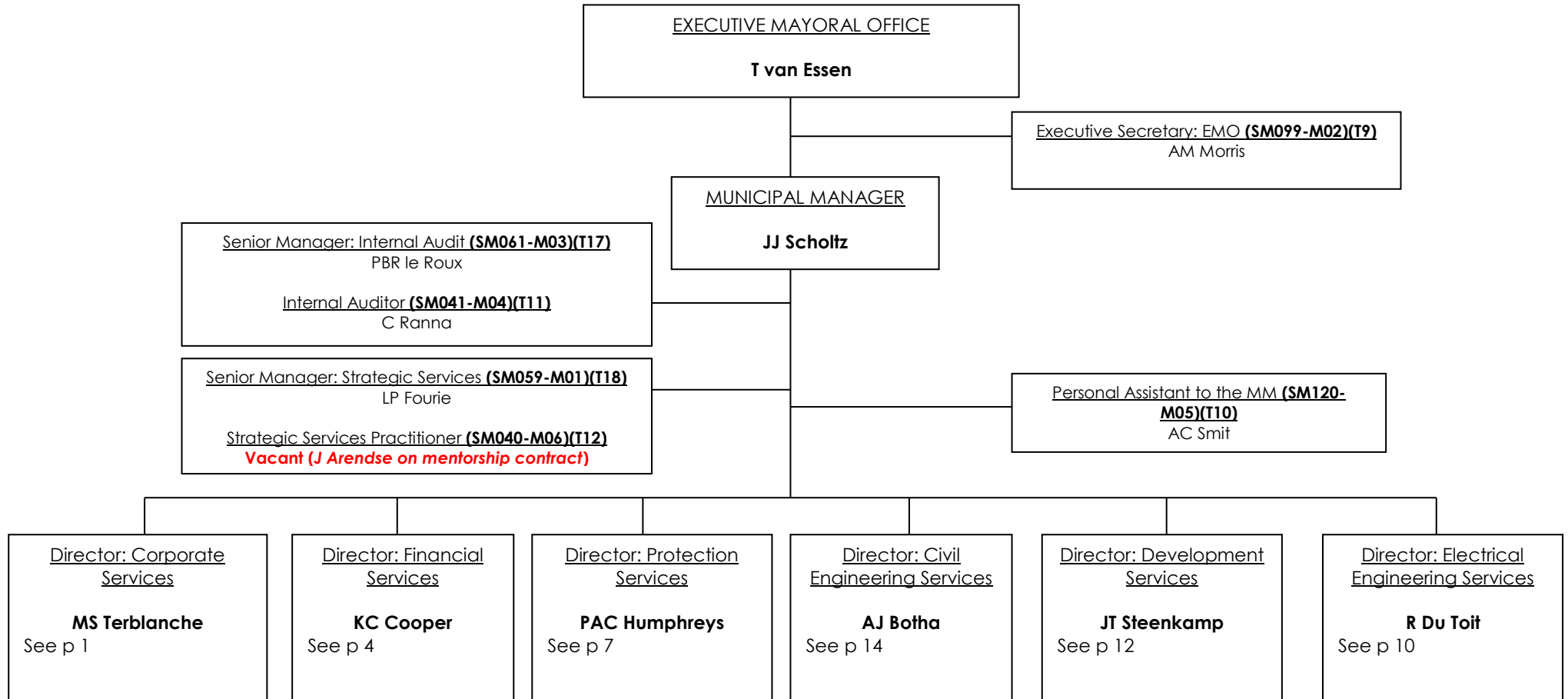
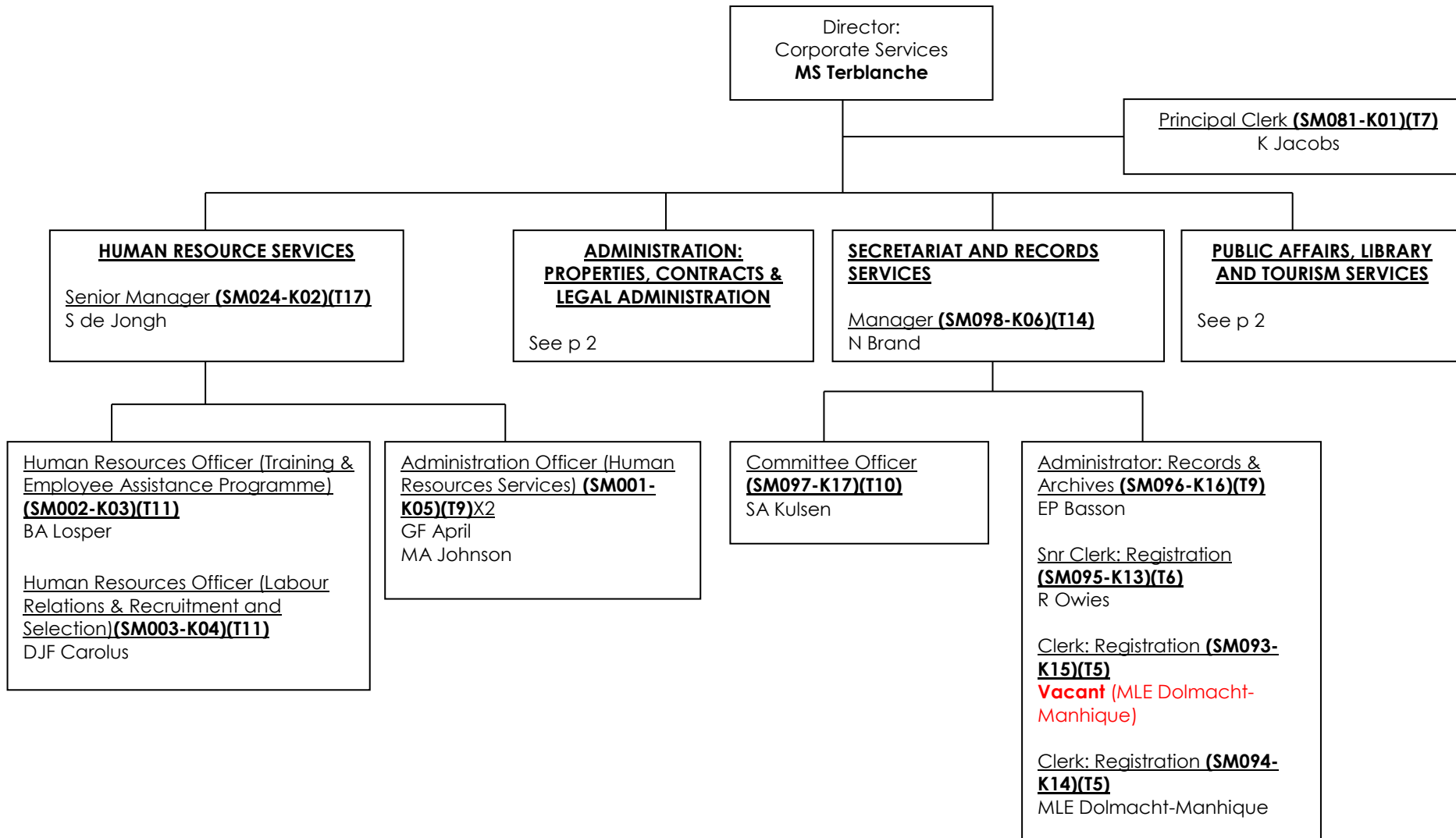


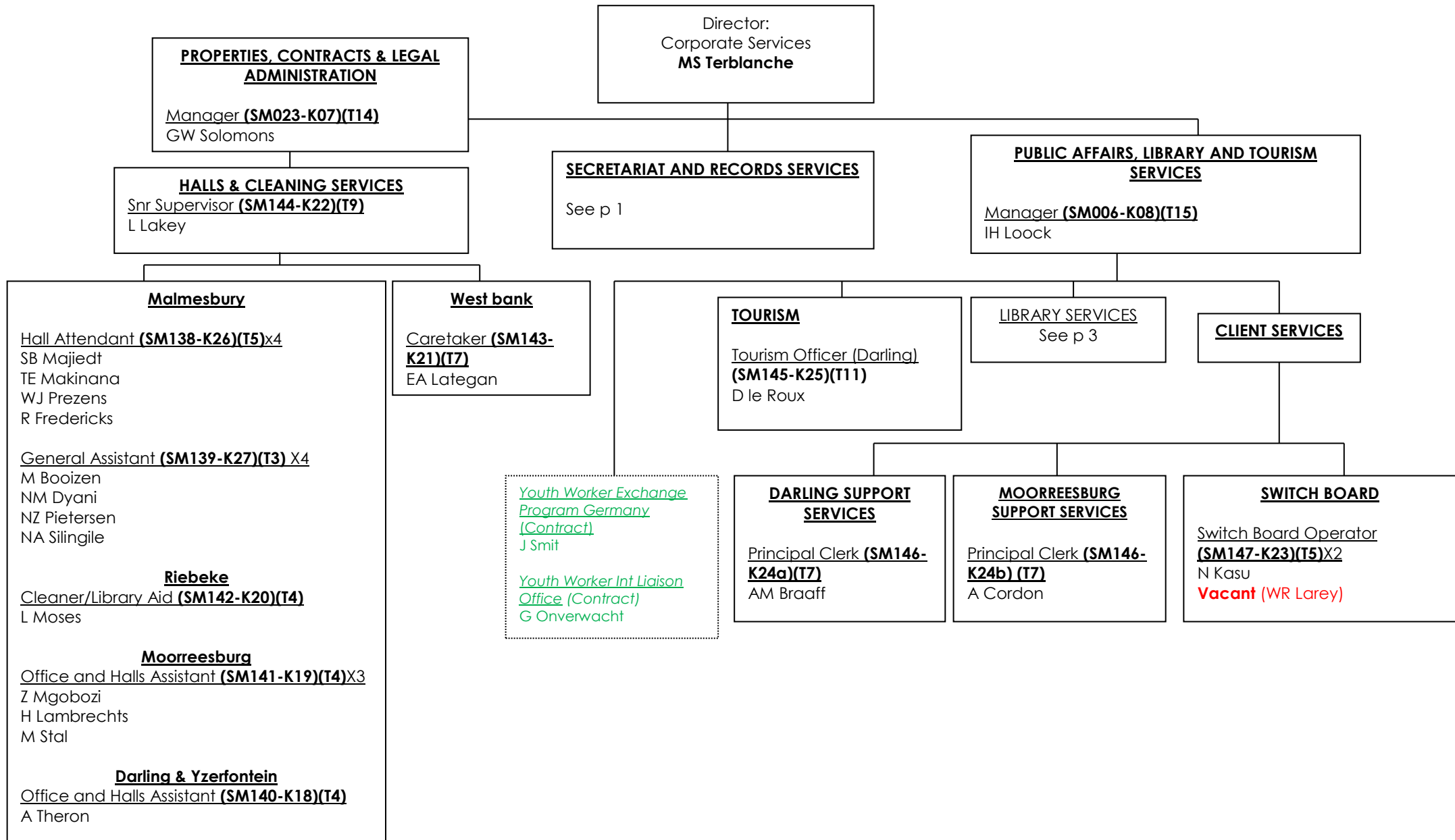
**SWARTLAND MUNICIPALITY**



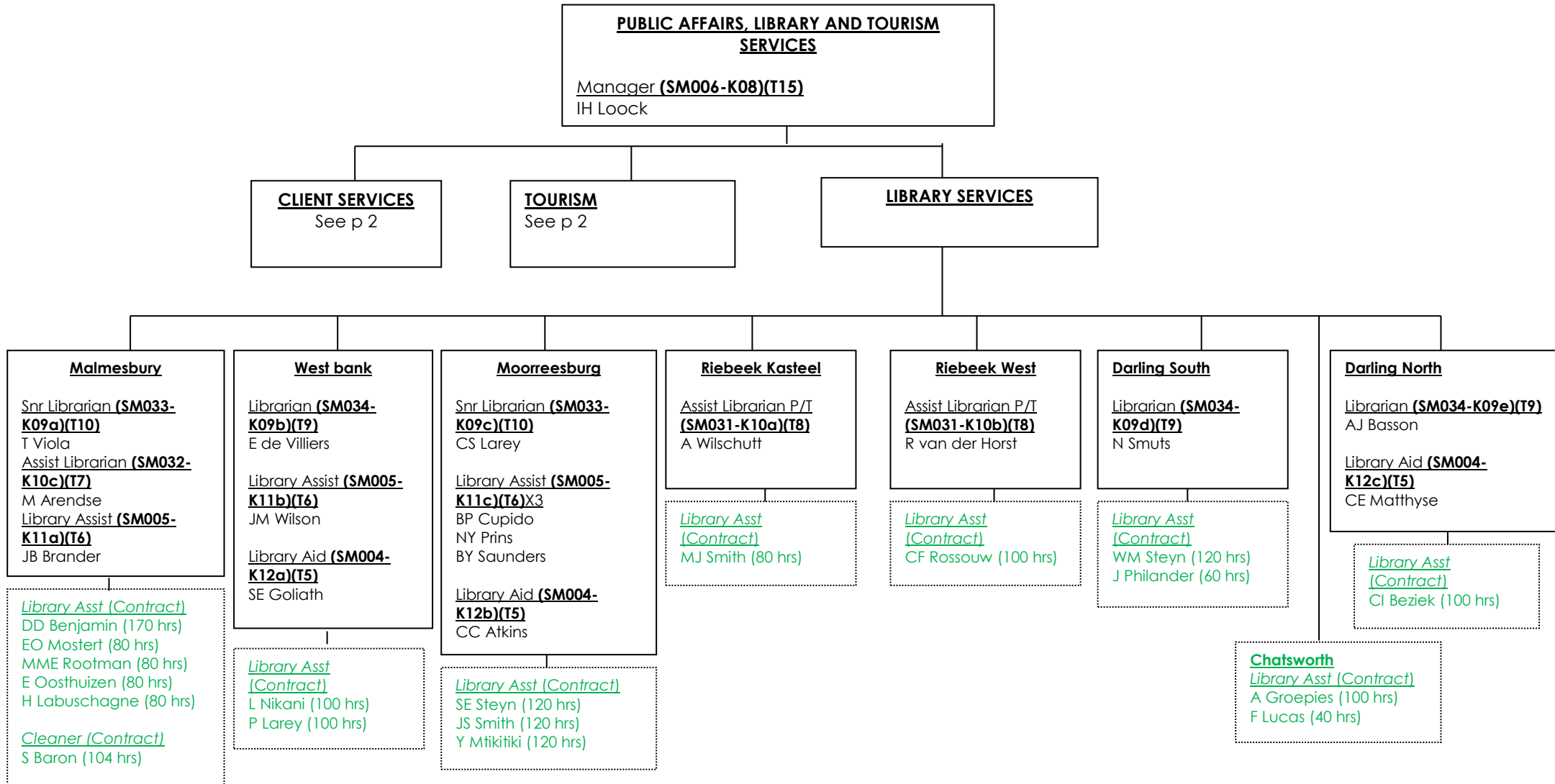
## CORPORATE SERVICES



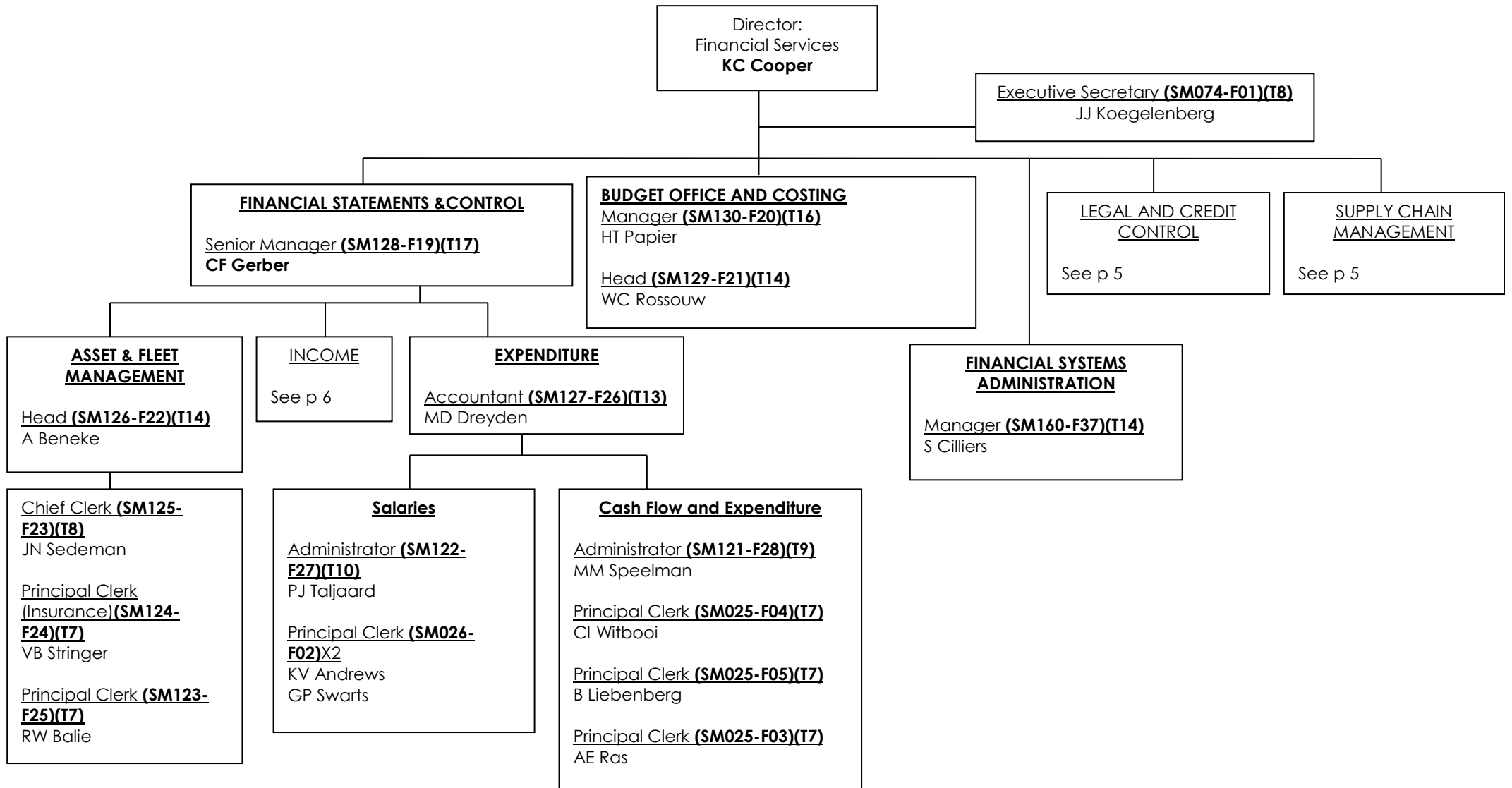
## CORPORATE SERVICES



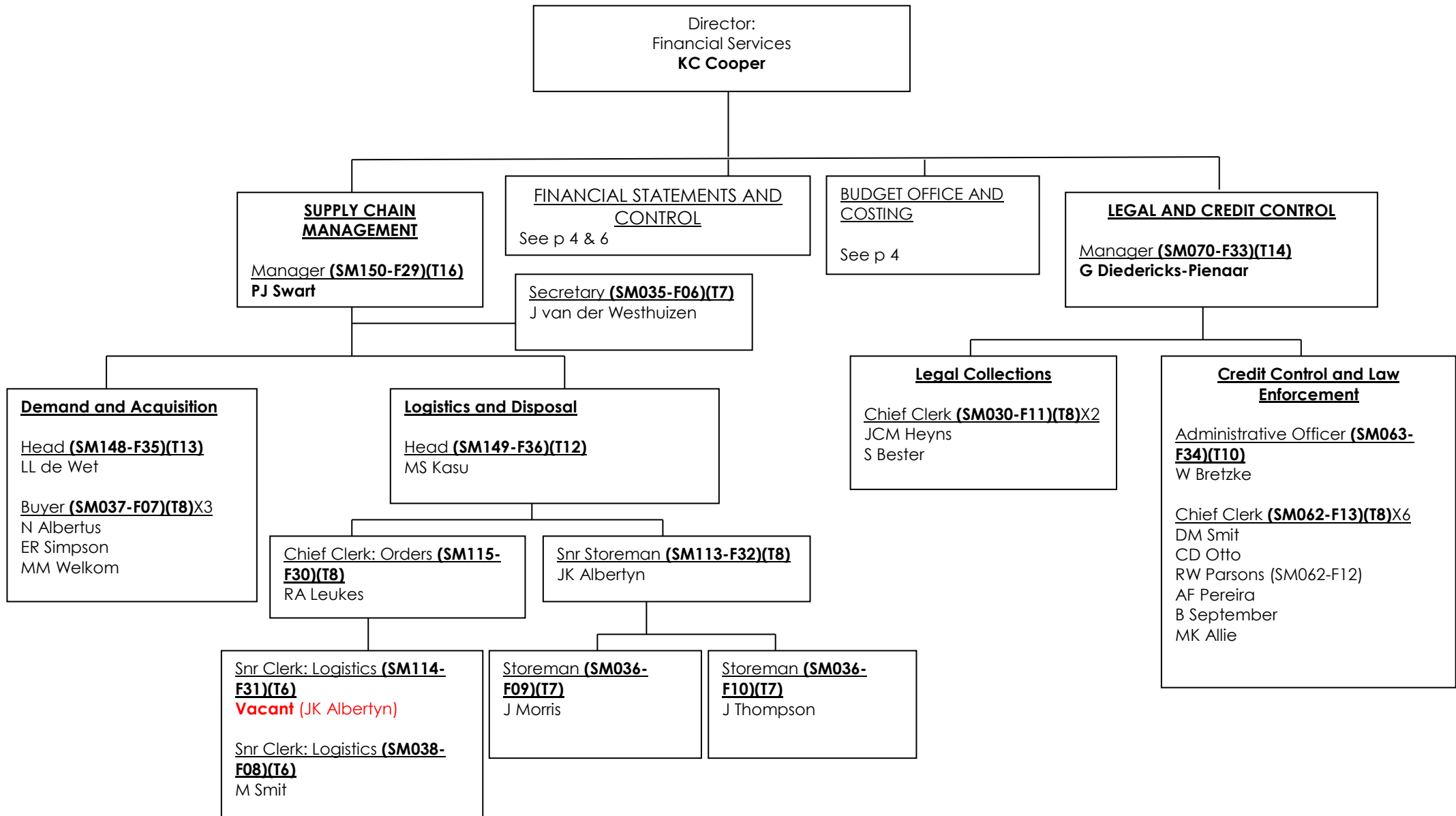
## CORPORATE SERVICES



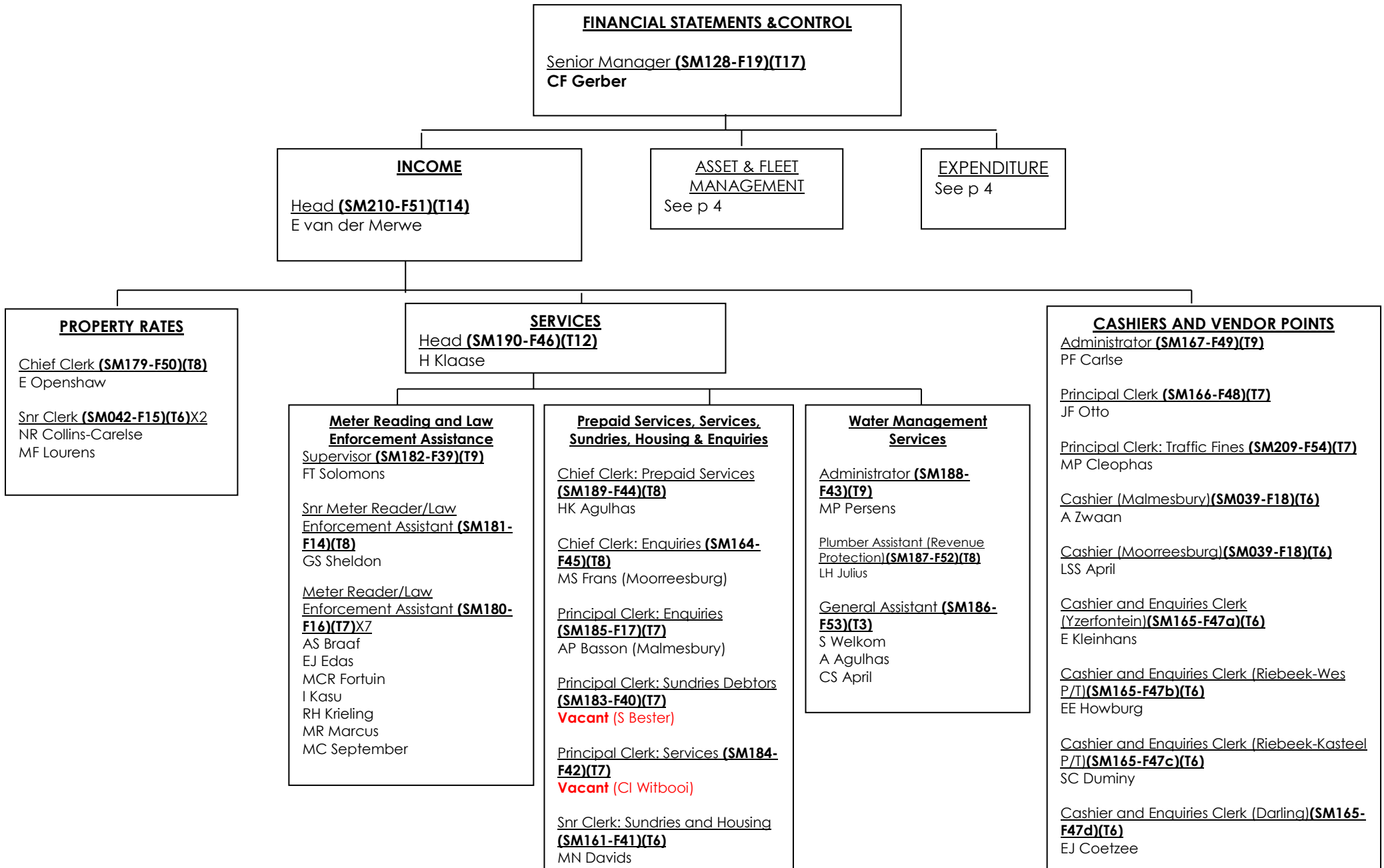
**FINANCIAL SERVICES**



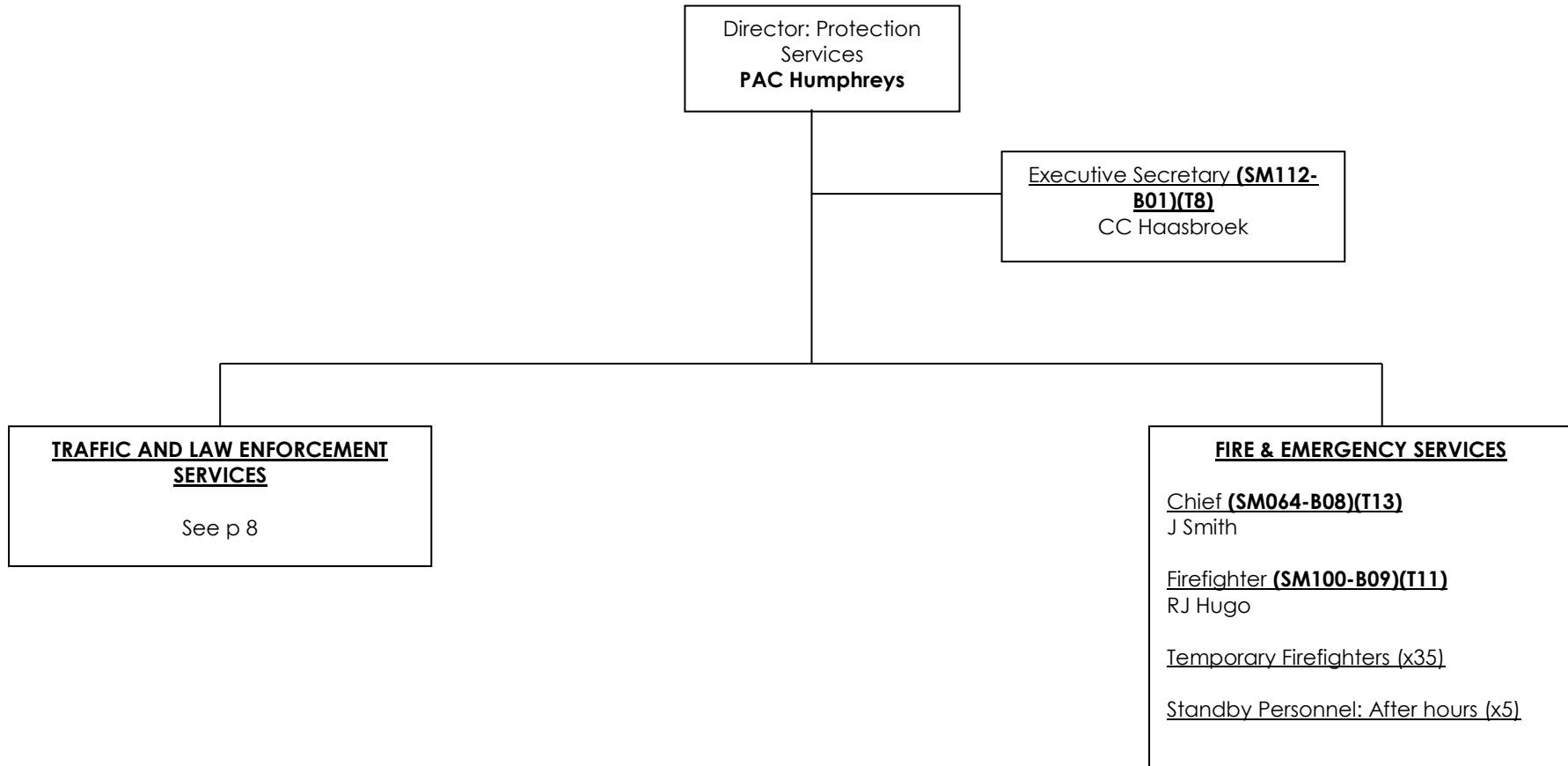
**FINANCIAL SERVICES**



## FINANCIAL SERVICES



**PROTECTION SERVICES**





# PROTECTION SERVICES

Director: Protection Services  
**PAC Humphreys**

**TRAFFIC AND LAW ENFORCEMENT SERVICES**  
Manager **(SM109-B07)(T16)**  
**RP Steyn**

**FIRE & EMERGENCY SERVICES**  
See p 7

**TRAFFIC/LAW ENFORCEMENT SERVICES**  
Head **(SM108-B06)(T13)**  
CP Solomons

**LAW ENFORCEMENT/TRAFFIC SERVICES**  
Head **(SM105-B04)(T13)**  
ND Matthys

**REGISTRATION AND LICENSING SERVICES**  
See p 9

**Admin & Logistics**  
  
Superintendent **(SM107-B10)(T12)**  
MB Goliath  
  
Administration and Logistics Officer: Traffic **(SM159-B25)(T7)**  
D van Schalkwyk  
  
Traffic/Law Enforcement Officer (Educational Programmes) **(SM106-B11)(T10)**  
C Prince

**Speeding Control**  
  
Superintendent **(SM107-B10)(T12)**  
UB Swarts  
  
Traffic/Law Enforcement Officer (Speeding) **(SM106-B11)(T10)X2**  
CJ Kruger  
JM Phillips  
  
Traffic/Law Enforcement Officer (Warrants) **(SM106-B11)(T10)X3**  
SP Larey  
Z Mlothana  
JJ Seals

**Shift A**  
  
Superintendent **(SM107-B10)(T12)**  
PJ Baron  
  
Traffic/Law Enforcement Officer **(SM106-B11)(T10)X5**  
RY Booizen  
ED Goliath  
RS Hendricks  
T Ndlala  
T Skontya

**Shift B**  
  
Superintendent **(SM107-B10)(T12)**  
**Vacant (SF Kiewiets)**  
  
Traffic/Law Enforcement Officer **(SM106-B11)(T10)X4**  
LJ Farao  
X Jam-Jam  
AC Miller  
E Swarts

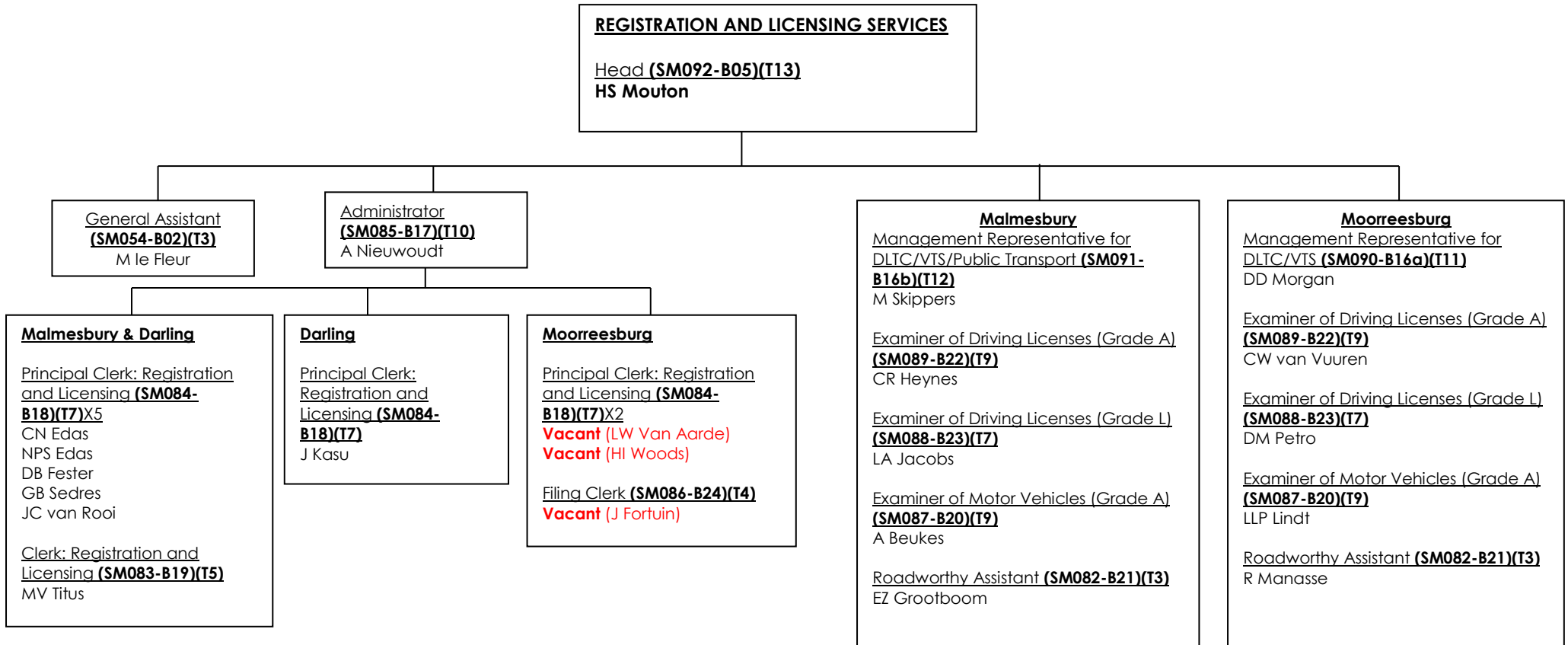
**Malmesbury**  
  
Regional Inspector **(SM104-B12)(T12)**  
N Africa  
  
Inspector **(SM103-B13)(T10)**  
JL Cilliers  
  
Law Enforcement/Traffic Officer **(SM101-B14)(T10)X3**  
NO Breedekamp  
M Dodo  
A Papier  
  
Law Enforcement Officer **(SM058-B03)(T9)**  
JH Willemse

**Moorreesburg**  
  
Regional Inspector **(SM104-B12)(T12)**  
AJ Philander  
  
Inspector **(SM103-B13)(T10)**  
H Pienaar  
  
Law Enforcement/Traffic Officer **(SM101-B14)(T10)X2**  
AWJ Adonis  
AF Larey

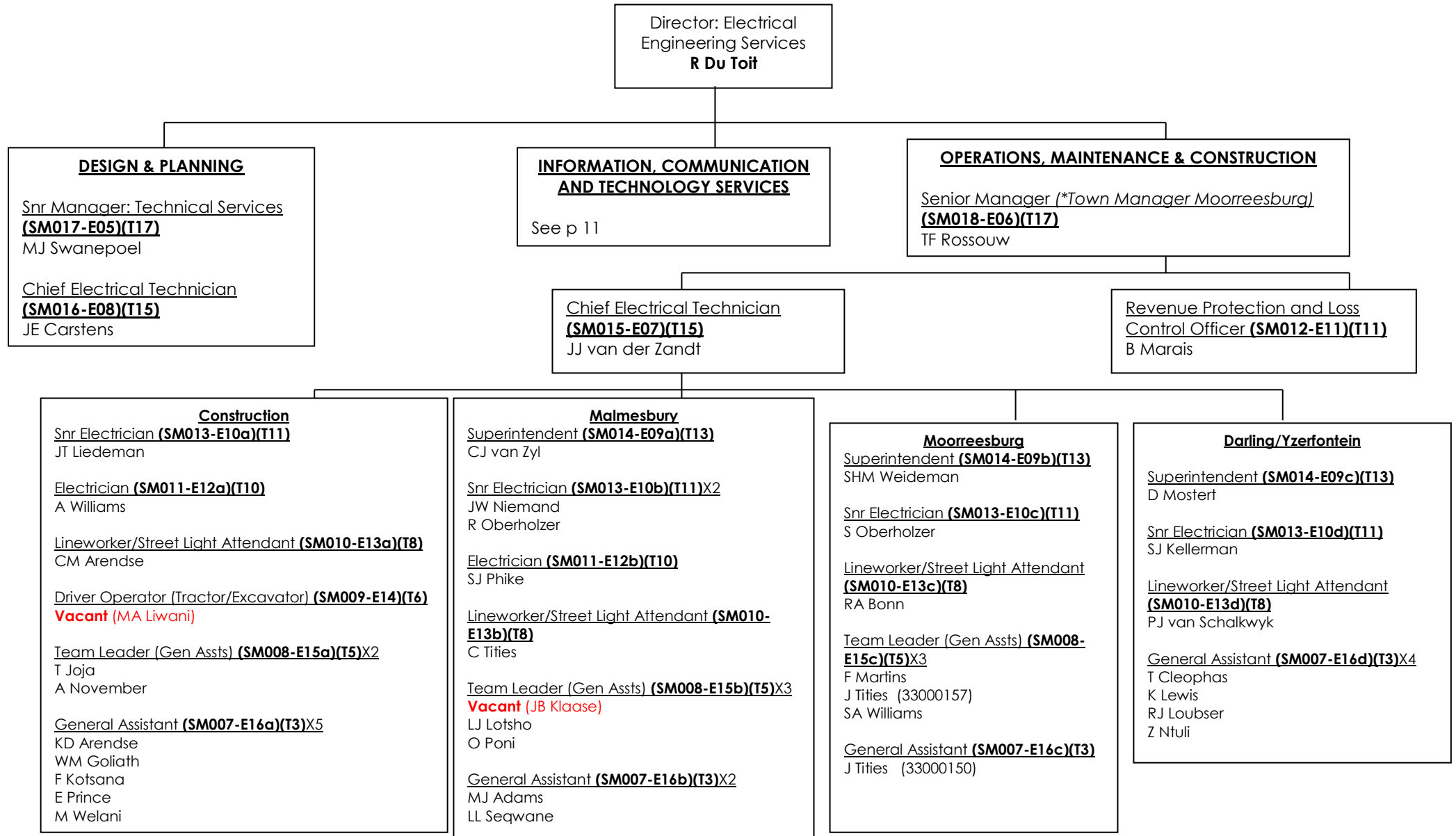
**Darling**  
  
Regional Inspector **(SM104-B12)(T12)**  
MPJ Humphreys  
  
Law Enforcement/Traffic Officer **(SM101-B14)(T10)X2**  
DC Baron  
**Vacant (MF Galant)**

**Yzerfontein**  
  
Law Enforcement/Traffic Officer (\*Town Manager Yzerfontein) **(SM102-B15)(T11)**  
AJN Carstens

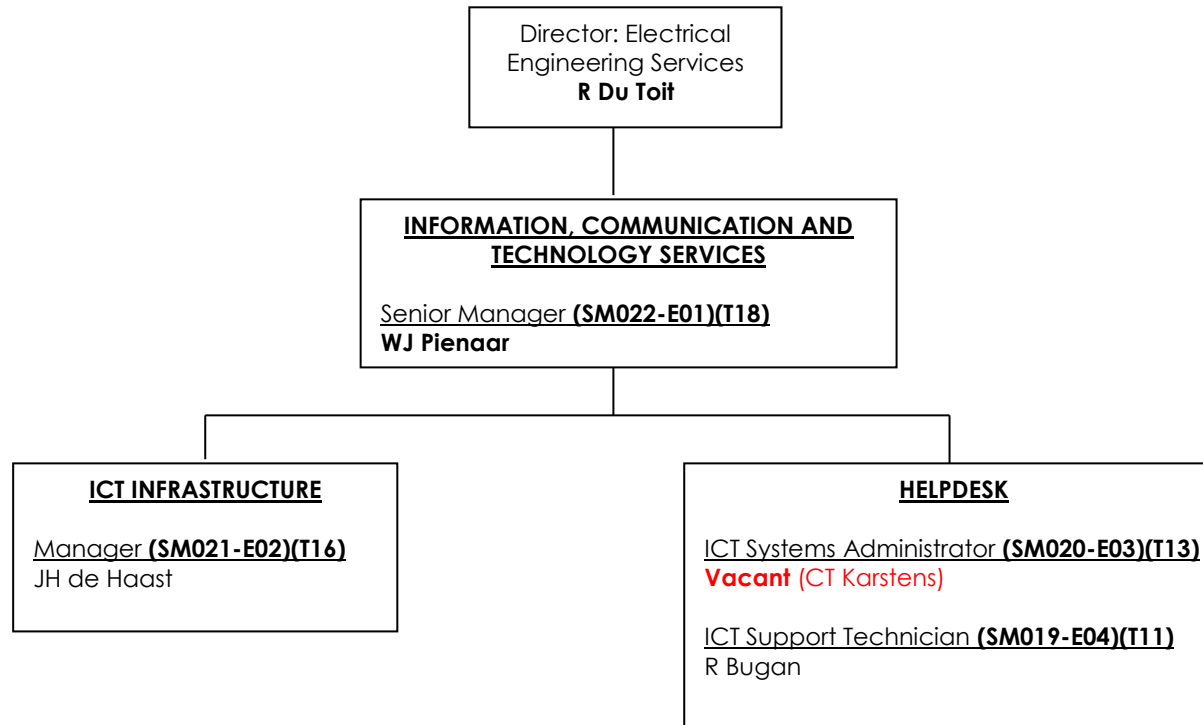
**PROTECTION SERVICES**



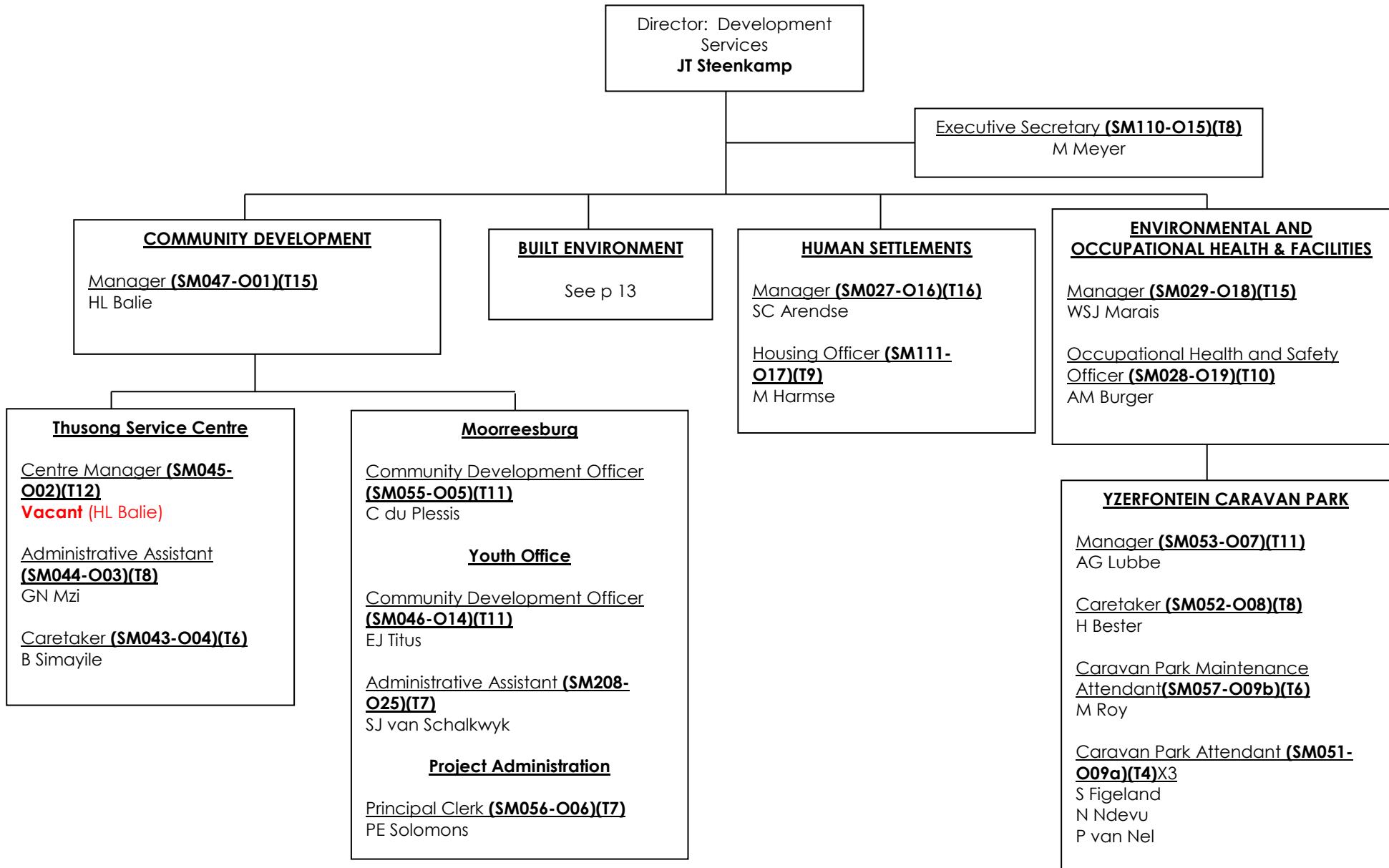
## ELECTRICAL ENGINEERING SERVICES



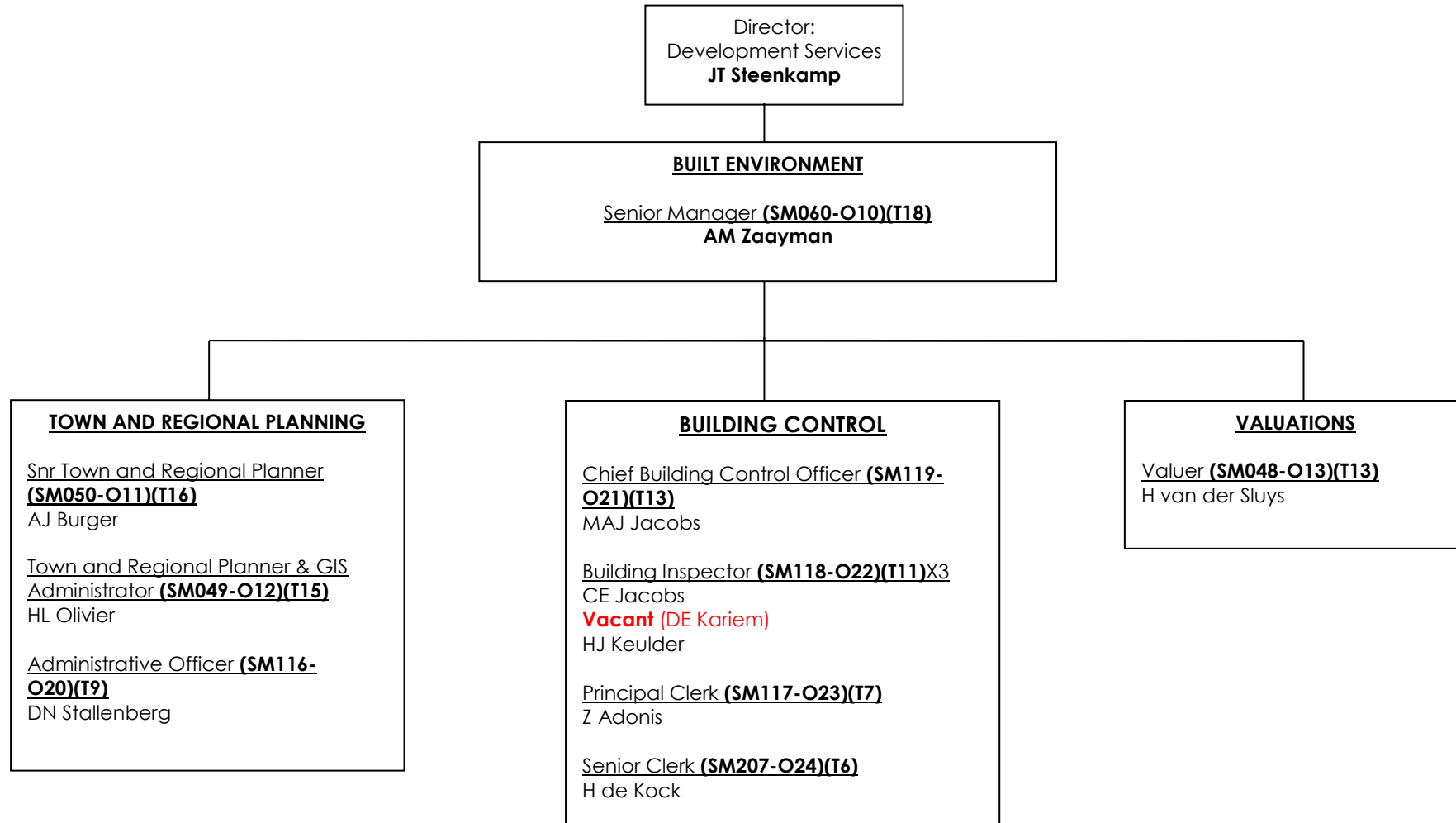
## ELECTRICAL ENGINEERING SERVICES



## DEVELOPMENT SERVICES



## DEVELOPMENT SERVICES



## CIVIL ENGINEERING SERVICES

