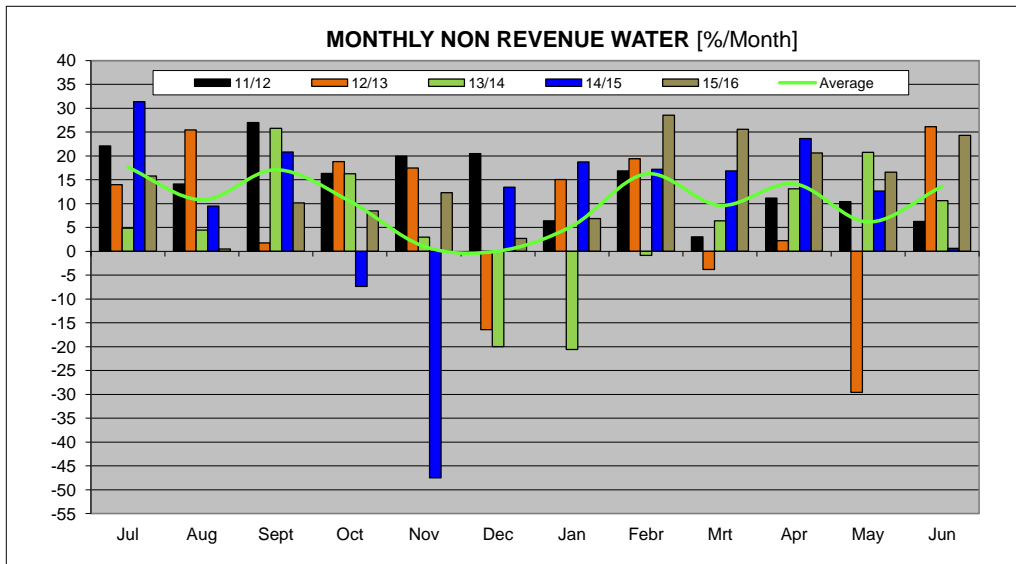
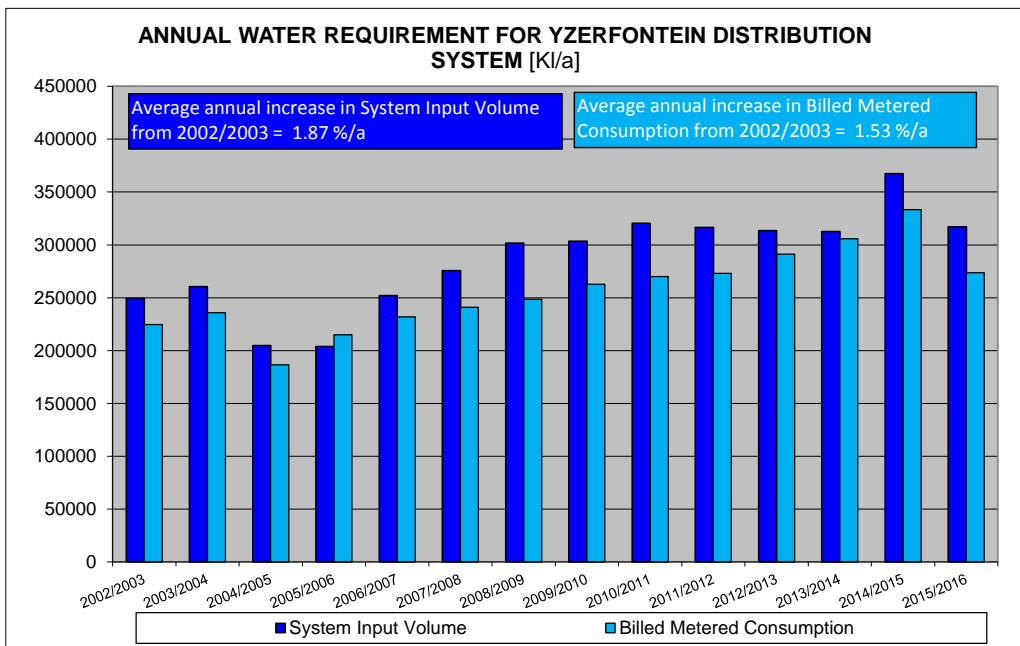
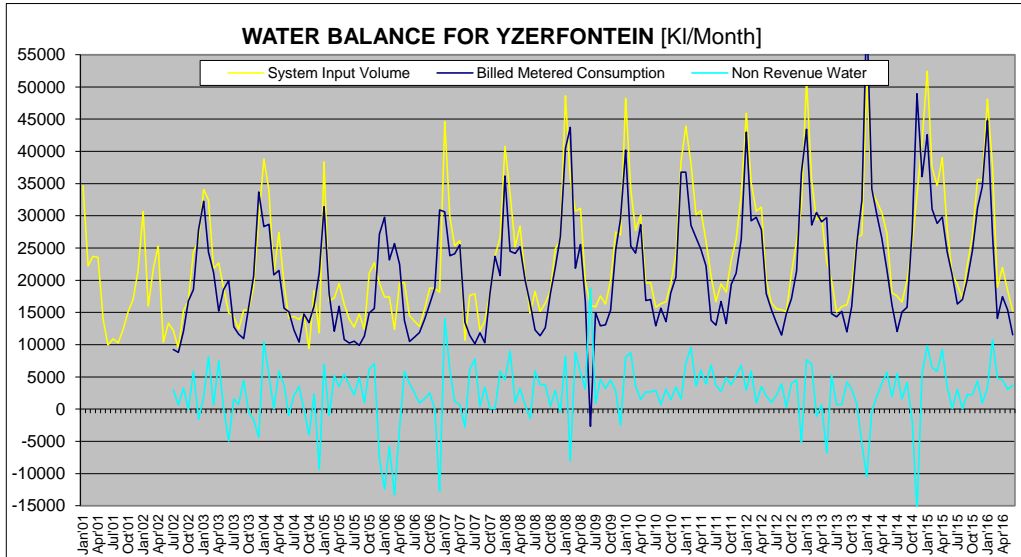




SWARTLAND MUNICIPALITY													
Yzerfontein													
Month	Year	BULK WATER SUPPLY				TREATED WATER SUPPLY				TOTALS ( ONLY NETWORK LOSSES )			
		Raw Water Supply	System Input Volume	Monthly Losses [m³]	Monthly Losses [%]	System Input Volume	Billed Metered Consumption	Monthly Losses [m³]	Monthly Losses [%]	Monthly Losses [m³]	Monthly Losses [%]	Annual Losses [m³]	Annual Losses [%]
Jul12	12/13					15548	13375	2173	14.0	2173	14.0		
Aug12						15999	11479	3920	25.5	3920	25.5		
Sep12						15093	14829	264	1.7	264	1.7		
Oct12						21127	17152	3975	18.8	3975	18.8		
Nov12						26038	21492	4556	17.5	4556	17.5		
Dec12						31490	36660	-5170	-16.4	-5170	-16.4		
Jan13						51120	43437	7683	15.0	7683	15.0		
Feb13						35497	28595	6902	19.4	6902	19.4		
Mrt13						29385	30503	-1118	-3.8	-1118	-3.8		
Apr13						29758	29096	662	2.2	662	2.2		
May13						22937	29716	-6781	-29.6	-6781	-29.6		
Jun13						20011	14756	5256	26.1	5256	26.1		
Jul13	13/14					15055	14323	732	4.9	732	4.9		
Aug13						15891	15181	710	4.5	710	4.5		
Sep13						16185	12807	4179	25.9	4179	25.9		
Oct13						18977	18890	897	16.3	897	16.3		
Nov13						26549	25765	784	3.0	784	3.0		
Dec13						27064	32468	-5404	-20.0	-5404	-20.0		
Jan14						51161	51161	-10527	-20.6	-10527	-20.6		
Feb14						33824	34121	-297	-0.9	-297	-0.9		
Mrt14						32151	30093	2058	6.4	2058	6.4		
Apr14						30536	26533	4003	13.1	4003	13.1		
May14						27280	21820	5660	20.7	5660	20.7		
Jun14						18046	16123	1923	10.7	1923	10.7		
Jul14	14/15					17538	12031	5507	31.4	5507	31.4		
Aug14						16625	16560	1575	9.5	1575	9.5		
Sep14						19975	15817	4158	20.8	4158	20.8		
Oct14						25806	27696	-1890	-7.3	-1890	-7.3		
Nov14						33205	48968	-15763	-47.5	-15763	-47.5		
Dec14						41649	36059	5590	13.4	5590	13.4		
Jan15						52420	42605	9815	18.7	9815	18.7		
Feb15						37535	31081	6454	17.2	6454	17.2		
Mrt15						34710	28942	5868	16.9	5868	16.9		
Apr15						39054	29807	9247	23.7	9247	23.7		
May15						28010	24470	3540	12.6	3540	12.6		
Jun15						20909	20771	134	0.6	134	0.6		
Jul15	15/16					19352	16288	3064	15.8	3064	15.8		
Aug15						17083	16998	85	0.5	85	0.5		
Sep15						22327	20061	2266	10.1	2266	10.1		
Oct15						26808	24542	2266	8.5	2266	8.5		
Nov15						35620	31230	4390	12.3	4390	12.3		
Dec15						35516	34554	962	2.7	962	2.7		
Jan16						48106	44796	3310	6.9	3310	6.9		
Feb16						37892	26932	10760	28.5	10760	28.5		
Mrt16						18890	14061	4839	25.6	4839	25.6		
Apr16						21960	17427	4533	20.6	4533	20.6		
May16						18465	15398	3067	16.6	3067	16.6		
Jun16						15230	11524	3706	24.3	3706	24.3		

ANNUAL TOTALS				
Year	System Input Volume	Billed Metered Consumption	Losses m³	Losses %
2001/2002	204690			
2002/2003	249211	224680	24551	9.9%
2003/2004	260440	235822	24618	9.5%
2004/2005	204773	186419	18354	9.0%
2005/2006	203050	214877	-11918	-5.9%
2006/2007	251914	231937	19977	7.9%
2007/2008	275702	241052	34650	12.6%
2008/2009	301621	246573	55048	17.6%
2009/2010	303482	262706	40776	13.4%
2010/2011	320386	270159	50227	15.7%
2011/2012	316552	272941	43611	13.8%
2012/2013	319423	281121	22302	7.1%
2013/2014	312719	305812	8907	2.2%
2014/2015	367432	333197	34235	9.3%
2015/2016	317039	273801	43238	13.6%

**WATER BALANCE AND USAGE FOR YZERFONTEIN DISTRIBUTION**



**WATER BALANCE AND USAGE FOR YZERFONTEIN DISTRIBUTION**

