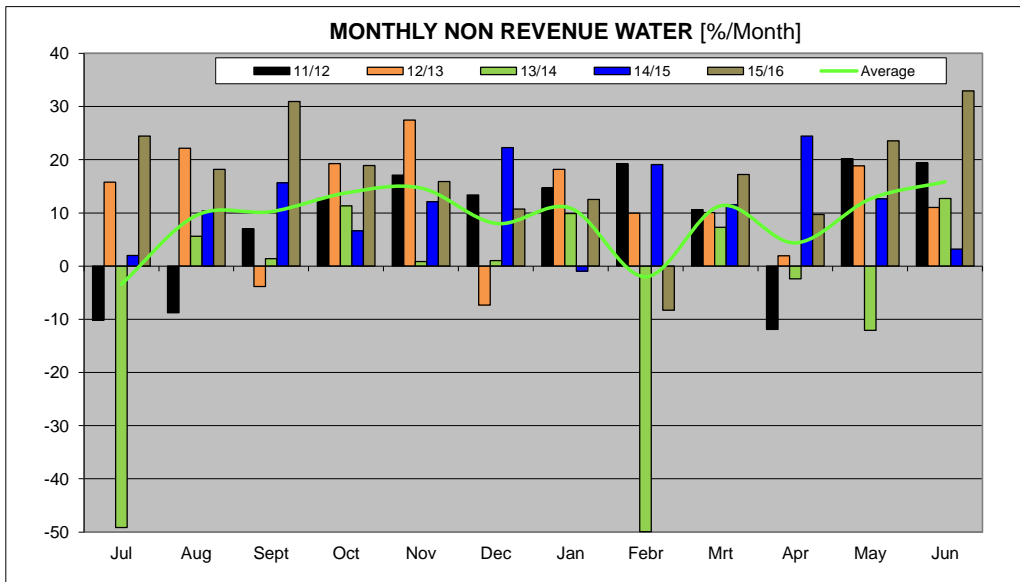
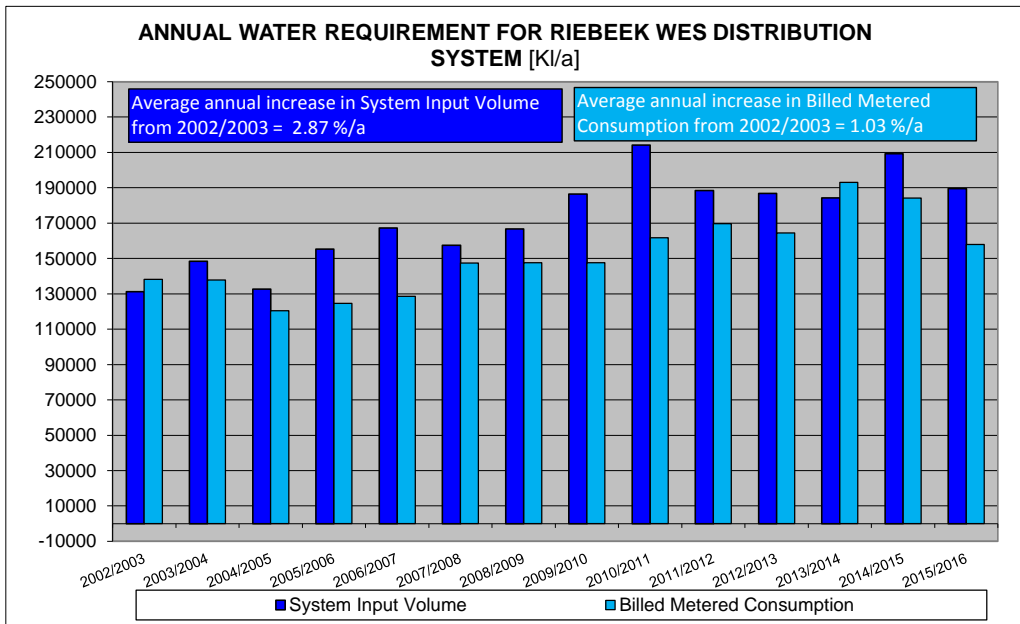
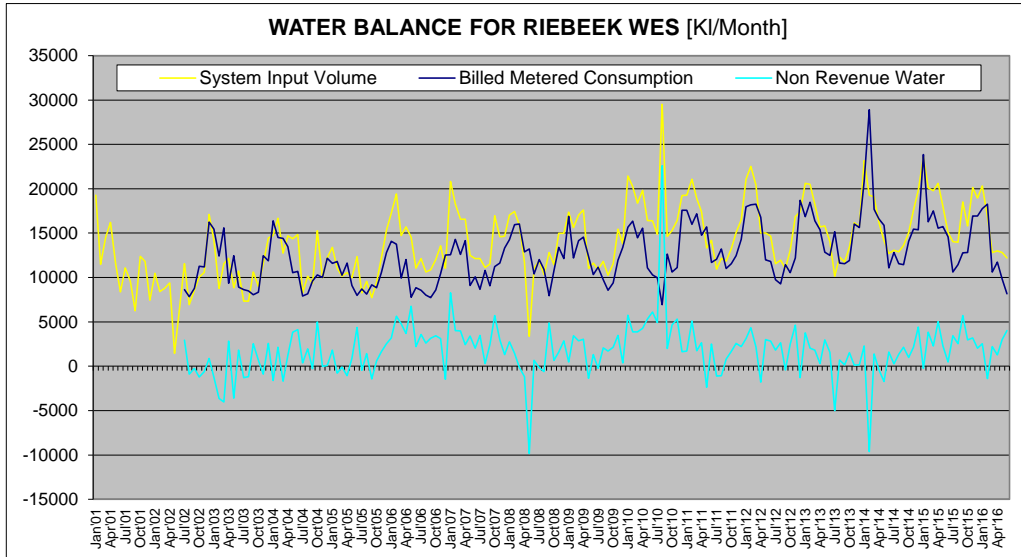


SWARTLAND MUNICIPALITY													
Riebeeck Wes													
Month	Year	BULK WATER SUPPLY				TREATED WATER SUPPLY				TOTALS (ONLY NETWORK LOSSES)			
		Raw Water Supply	System Input Volume	Monthly Losses [m³]	Monthly Losses [%]	System Input Volume	Billed Metered Consumption	Monthly Losses [m³]	Monthly Losses [%]	Monthly Losses [m³]	Monthly Losses [%]	Annual Losses [m³]	Annual Losses [%]
Jan01						19283							
Feb01						11493							
Mrt01						14552							
Apr01						16221							
May01						11563							
Jun01						8369							
Jul01						11096							
Aug01						9579							
Sep01						6246							
Oct01						12385							
Nov01						11799							
Dec01						7438							
Jan02						10476							
Feb02						8429							
Mrt02						8782							
Apr02						9379							
May02						1458							
Jun02						6646							
Jul02						11573	8623	2950	25.5	2950	25.5		
Aug02						6957	7853	-896	-12.9	-896	-12.9		
Sep02						8583	8780	-227	-2.7	-227	-2.7		
Oct02						10057	11270	-1213	-12.1	-1213	-12.1		
Nov02						10597	11179	-582	-5.5	-582	-5.5		
Dec02						17106	16241	865	5.1	865	5.1		
Jan03						14183	15446	-1263	-8.9	-1263	-8.9		
Feb03						8781	12424	-3643	-41.5	-3643	-41.5		
Mrt03						11551	15589	-4038	-35.0	-4038	-35.0		
Apr03						12182	9339	2843	23.3	2843	23.3		
May03						8863	12442	-3579	-40.4	-3579	-40.4		
Jun03						10738	8522	1816	16.9	1816	16.9		
Jul03						7332	8631	-1299	-17.7	-1299	-17.7		
Aug03						7330	8494	-1164	-15.9	-1164	-15.9		
Sep03						10609	8074	2535	23.9	2535	23.9		
Oct03						8510	8357	853	7.2	853	7.2		
Nov03						11551	12444	-893	-7.7	-893	-7.7		
Dec03						14438	11879	2559	17.7	2559	17.7		
Jan04						14778	16358	-1610	-10.9	-1610	-10.9		
Feb04						16658	14505	2154	12.9	2154	12.9		
Mrt04						12744	14415	-1671	-13.1	-1671	-13.1		
Apr04						14696	13460	1236	8.4	1236	8.4		
May04						14377	10559	3822	26.6	3822	26.6		
Jun04						14629	10697	4132	27.9	4132	27.9		
Jul04						8283	7897	386	4.7	386	4.7		
Aug04						10138	8182	1956	19.3	1956	19.3		
Sep04						9312	9598	-286	-3.1	-286	-3.1		
Oct04						15266	10286	4986	32.7	4986	32.7		
Nov04						9957	9993	-36	-0.4	-36	-0.4		
Dec04						12240	12156	84	0.7	84	0.7		
Jan05						13395	11575	1820	13.6	1820	13.6		
Feb05						11358	11824	-466	-4.1	-466	-4.1		
Mrt05						10140	10245	-105	-1.0	-105	-1.0		
Apr05						10556	11628	-1072	-10.2	-1072	-10.2		
May05						9958	9092	866	8.7	866	8.7		
Jun05						12354	7969	4385	35.5	4385	35.5		
Jul05						8281	8720	-439	-5.3	-439	-5.3		
Aug05						9554	8117	1437	15.0	1437	15.0		
Sep05						7737	9170	-1433	-18.5	-1433	-18.5		
Oct05						9459	8659	800	6.3	800	6.3		
Nov05						12204	10556	1648	13.5	1648	13.5		
Dec05						15337	12801	2536	16.5	2536	16.5		
Jan06						17267	14084	3183	18.4	3183	18.4		
Feb06						19408	13752	5656	29.1	5656	29.1		
Mrt06						14730	9949	4781	32.5	4781	32.5		
Apr06						15719	12011	3708	23.6	3708	23.6		
May06						14533	7777	6756	46.5	6756	46.5		
Jun06						11057	8842	2215	20.0	2215	20.0		
Jul06						12149	8517	3632	29.9	3632	29.9		
Aug06						10631	8008	2623	24.7	2623	24.7		
Sep06						10886	7740	3146	28.9	3146	28.9		
Oct06						12037	8583	3454	28.7	3454	28.7		
Nov06						13640	10436	3204	23.4	3204	23.4		
Dec06						11048	12524	-1476	-13.4	-1476	-13.4		
Jan07						20831	12574	8257	39.6	8257	39.6		
Feb07						18304	14292	4012	21.9	4012	21.9		
Mrt07						16374	12587	3787	23.1	3787	23.1		
Apr07						16583	14164	2419	14.6	2419	14.6		
May07						12503	9110	3393	27.1	3393	27.1		
Jun07						12129	10089	2040	16.8	2040	16.8		
Jul07						12119	8669	3450	28.5	3450	28.5		
Aug07						11108	10810	298	2.7	298	2.7		
Sep07						11522	9083	2439	21.2	2439	21.2		
Oct07						16948	11224	5724	33.8	5724	33.8		
Nov07						14571	11616	2955	20.5	2955	20.5		
Dec07						14665	13339	1326	9.0	1326	9.0		
Jan08						17030	14275	2755	16.2	2755	16.2		
Feb08						17421	15964	1457	8.4	1457	8.4		
Mrt08						15969	16026	-117	-0.7	-117	-0.7		
Apr08						17708	12882	-4874	-27.4	-4874	-27.4		
May08						3380	13212	-9832	-290.9	-9832	-290.9		
Jun08						11056	10386	670	6.1	670	6.1		
Jul08						11665	12034	-1669	-14.4	-1669	-14.4		
Aug08						10334	10920	-586	-5.7	-586	-5.7		
Sep08						12817	7946	4871	38.0	4871	38.0		
Oct08						11440	10780	660	5.8	660	5.8		
Nov08						14996	13385	1611	10.7	1611	10.7		
Dec08						14993	12123	2870	19.1	2870	19.1		
Jan09						17371	16879	492	2.8	492	2.8		
Feb09						15638	12202	3436	22.0	3436	22.0		
Mrt09						17037	14157	2880	16.9	2880	16.9		
Apr09						17605	14546	3059	17.4	3059	17.4		
May09						11010	12383	-1373	-12.5	-1373	-12.5		
Jun09						11639	10335	1304	11.2	1304	11.2		
Jul09						10895	11145	-250	-2.3	-250	-2.3		
Aug09						11807	9746	2061	17.5	2061	17.5		
Sep09						10270	8553	1717	16.7	1717	16.7		
Oct09						11538	9404	2134	18.5	2134	18.5		
Nov09						15448	11953	3495	22.9	3495	22.9		
Dec09						13776	13386	390	2.8	390	2.8		
Jan10						21419	15660	5759	26.9	5759	26.9		
Feb10						20242	16355	3887	19.2	3887	19.2		
Mrt10						16366	14478	1888	11.7	1888	11.7		
Apr10						19824	15548	4276	21.6	4276	21.6		
May10						16417	11088	5329	32.5	5329	32.5		
Jun10						16366	10294	6072	37.2	6072	37.2		
Jul10						14867	9959	4908	33.0	4908	33.0		
Aug10						28523	6946	22577	76.5	22577	76.5		
Sep10						14614	12631	1983	13.6	1983	13.6		
Oct10						15008	10635	4373	30.5	4373	30.5		
Nov10						16429	11118	5311	32.3	5311	32.3		
Dec10						19248	17594	1654	8.6	1654	8.6		
Jan11						19289	17594	1694	8.6	1694	8.6		
Feb11						21077	15984	5093	24.2	5093	24.2		
Mrt11						18809	17179	1730	9.1	1730	9.1		
Apr11						17414	14757	2657	15.3	2657	15.3		
May11						16489	13335	3154	19.3	3154	19.3		
Jun11						14204	11684	2520	17.7	2520	17.7		
Jul11						10941	12051	-1110	-10.1	-1110	-10.1		
Aug11						12160	13229	-1069	-8.8	-1069	-8.8		
Sep11						11534	11029	505	4.5	505	4.5		
Oct11						13238	11559	1679	12.7	1679	12.7		
Nov11						15048	12473	2575	17.1	2575	17.1		
Dec11													

SWARTLAND MUNICIPALITY													
Riebeeck Wes													
Month	Year	BULK WATER SUPPLY				TREATED WATER SUPPLY				TOTALS (ONLY NETWORK LOSSES)			
		Raw Water Supply	System Input Volume	Monthly Losses [m³]	Monthly Losses [%]	System Input Volume	Billed Metered Consumption	Monthly Losses [m³]	Monthly Losses [%]	Monthly Losses [m³]	Monthly Losses [%]	Annual Losses [m³]	Annual Losses [%]
Jul12	12/13					11571	9744	1827	15.8	1827	15.8	22376	12.0%
Aug12						11935	9291	2644	22.2	2644	22.2		
Sep12						11032	11454	-422	-3.8	-422	-3.8		
Oct12						13076	10552	2518	19.3	2518	19.3		
Nov12						16844	12222	4622	27.4	4622	27.4		
Dec12						17405	18679	-1274	-7.3	-1274	-7.3		
Jan13						20616	16862	3754	18.2	3754	18.2		
Feb13						20513	19473	2040	9.9	2040	9.9		
Mar13						18214	16381	1833	10.1	1833	10.1		
Apr13						15691	15389	302	1.9	302	1.9		
May13						15824	12841	2983	18.9	2983	18.9		
Jun13						14028	12490	1539	11.0	1548	11.0		
Jul13	13/14				10162	15159	-4997	-49.2	-4997	-49.2	-8750	-4.8%	
Aug13					12330	11638	692	5.6	692	5.6			
Sep13					11716	11553	165	1.4	165	1.4			
Oct13					13420	11903	1517	11.3	1517	11.3			
Nov13					16161	16023	138	0.9	138	0.9			
Dec13					15790	15623	167	1.1	167	1.1			
Jan14					23167	20876	2291	9.9	2291	9.9			
Feb14					19272	28900	-9628	-50.0	-9628	-50.0			
Mar14					19096	17699	1397	7.3	1387	7.3			
Apr14					16223	16608	-385	-2.4	-385	-2.4			
May14					14169	15582	-11713	-12.1	-11713	-12.1			
Jun14					12712	11096	1616	12.7	1616	12.7			
Jul14	14/15				13072	12807	265	2.0	265	2.0	24966	11.9%	
Aug14					12879	11543	1336	10.4	1336	10.4			
Sep14					13595	11464	2131	15.7	2131	15.7			
Oct14					15060	14064	996	6.6	996	6.6			
Nov14					17573	15446	2127	12.1	2127	12.1			
Dec14					19914	15398	4416	22.3	4416	22.3			
Jan15					23614	23839	-225	-1.0	-225	-1.0			
Feb15					20117	16282	3835	19.1	3835	19.1			
Mar15					19784	17507	2277	11.5	2277	11.5			
Apr15					20616	15575	5041	24.5	5041	24.5			
May15					18021	15743	2278	12.6	2278	12.6			
Jun15					15082	14599	487	3.2	487	3.2			
Jul15	15/16				14035	10603	3432	24.5	3432	24.5	31570	16.7%	
Aug15					13976	11432	2544	18.2	2544	18.2			
Sep15					18514	12788	5726	30.9	5726	30.9			
Oct15					15805	12820	2985	18.9	2985	18.9			
Nov15					20132	16937	3195	15.9	3195	15.9			
Dec15					18958	16925	2033	10.7	2033	10.7			
Jan16					20322	17774	2548	12.5	2548	12.5			
Feb16					16968	18263	-1295	-8.3	-1295	-8.3			
Mar16					12624	10616	2208	17.2	2208	17.2			
Apr16					12983	11722	1261	9.7	1261	9.7			
May16					12826	9609	3017	23.5	3017	23.5			
Jun16					12197	8181	4016	32.9	4016	32.9			

ANNUAL TOTALS				
Year	System Input Volume	Billed Metered Consumption	Losses m³	Losses %
2001/2002	103715			
2002/2003	131151	138118	-6968	-5.3%
2003/2004	148353	137899	10454	7.0%
2004/2005	132657	120439	12218	9.2%
2005/2006	155296	124638	30648	19.7%
2006/2007	167235	128655	38580	23.1%
2007/2008	157436	147476	9959	6.3%
2008/2009	169745	147690	19055	11.4%
2009/2010	186384	147610	38774	20.8%
2010/2011	214216	161779	52437	24.5%
2011/2012	185371	169803	15568	10.0%
2012/2013	186744	164368	22376	12.0%
2013/2014	184210	192960	-8750	-4.8%
2014/2015	208227	184261	24966	11.9%
2015/2016	189440	157970	31570	16.7%

WATER BALANCE AND USAGE FOR RIEBEEK WES DISTRIBUTION SYSTEM



WATER BALANCE AND USAGE FOR RIEBEEK WES DISTRIBUTION SYSTEM

