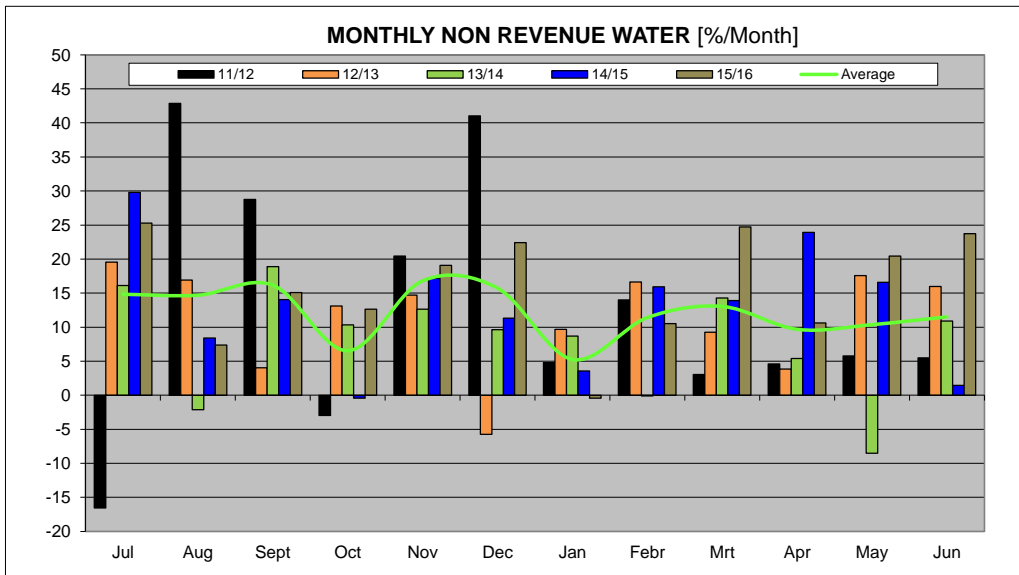
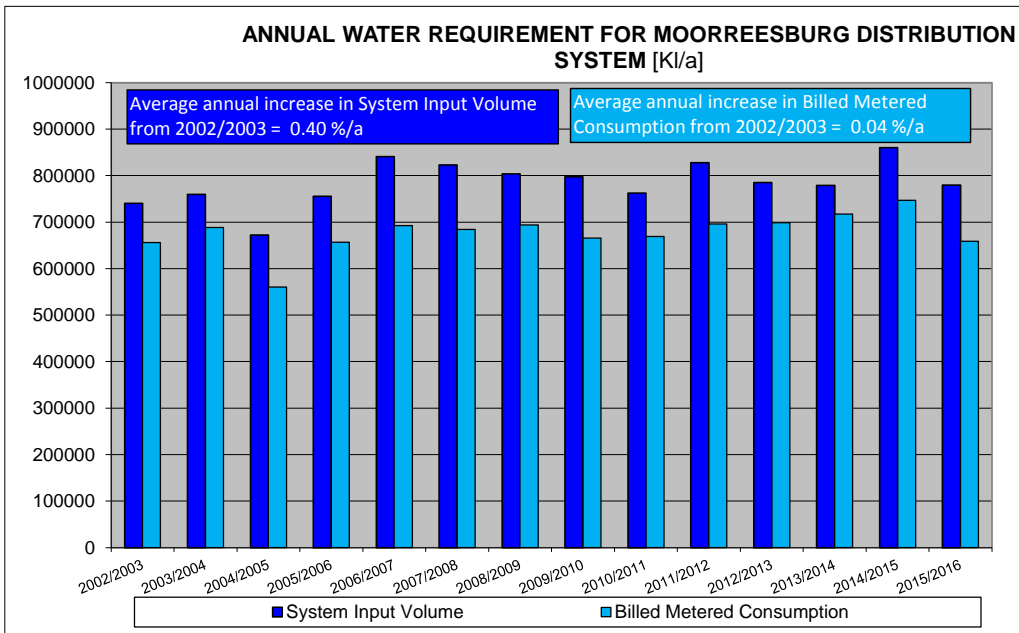
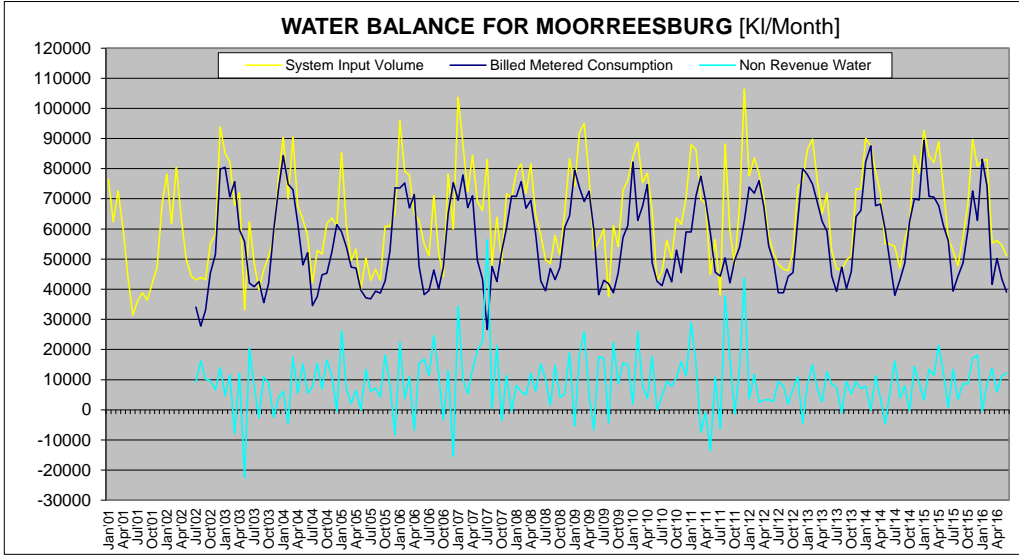




SWARTLAND MUNICIPALITY														
Moorreesburg														
Month	Year	BULK WATER SUPPLY				TREATED WATER SUPPLY				TOTALS ( ONLY NETWORK LOSSES )				
		Raw Water Supply	System Input Volume	Monthly Losses [m³]	Monthly Losses [%]	System Input Volume	Billed Metered Consumption	Monthly Losses [m³]	Monthly Losses [%]	Monthly Losses [m³]	Monthly Losses [%]	Annual Losses [m³]	Annual Losses [%]	
Jul12	12/13					48281	38851	9430	19.5		9430	19.5	86457	11.0%
Aug12						46733	38818	7915	16.9		7915	16.9		
Sep12						46123	44260	1863	4.0		1863	4.0		
Oct12						52377	45515	6862	13.1		6862	13.1		
Nov12						74051	63154	10897	14.7		10897	14.7		
Dec12						75733	80068	-4335	-5.7		-4335	-5.7		
Jan13						86397	79657	6740	7.7		6740	7.7		
Feb13						89760	74830	14930	16.6		14930	16.6		
Mar13						75836	68823	7013	9.2		7013	9.2		
Apr13						85022	82518	2504	3.9		2504	3.9		
May13						71889	59265	12624	17.6		12624	17.6		
Jun13						52738	44324	8414	16.0		8414	16.0		
Jul13	13/14					46822	39272	7550	16.1		7550	16.1		
Aug13						46331	47310	-979	-2.1		-979	-2.1		
Sep13						49816	40241	9575	19.3		9575	19.3		
Oct13						51093	45815	5278	10.3		5278	10.3		
Nov13						73342	73342	64079	12.6		9263	12.6		
Dec13						73200	68141	7059	9.6		7059	9.6		
Jan14						90043	82216	7827	8.7		7827	8.7		
Feb14						87489	87588	-99	-0.1		-99	-0.1		
Mar14						78949	87861	11288	14.3		11288	14.3		
Apr14						72114	89208	3906	5.4		3906	5.4		
May14						54972	59643	-4672	-8.5		-4672	-8.5		
Jun14						54972	49869	6002	10.9		6002	10.9		
Jul14	14/15					54968	37868	16100	29.8		16100	29.8		
Aug14						46980	43035	3945	8.4		3945	8.4		
Sep14						56496	48561	7935	14.0		7935	14.0		
Oct14						82134	82410	-276	-0.4		-276	-0.4		
Nov14						84387	89905	14462	17.1		14462	17.1		
Dec14						78467	69590	8877	11.3		8877	11.3		
Jan15						92663	89382	3281	3.5		3281	3.5		
Feb15						84160	70752	13408	15.9		13408	15.9		
Mar15						82000	70602	11398	13.9		11398	13.9		
Apr15						88984	67711	21273	23.9		21273	23.9		
May15						73091	60982	12109	16.6		12109	16.6		
Jun15						46976	56044	334	1.5		334	1.5		
Jul15	15/16					52752	39409	13343	25.3		13343	25.3		
Aug15						47740	44229	3511	7.4		3511	7.4		
Sep15						57422	49750	8672	15.1		8672	15.1		
Oct15						68045	59439	8606	12.6		8606	12.6		
Nov15						89720	72602	17118	19.1		17118	19.1		
Dec15						80914	82780	18134	22.4		18134	22.4		
Jan16						82707	83074	-367	-0.4		-367	-0.4		
Feb16						82958	74230	8728	10.5		8728	10.5		
Mar16						55315	41640	13675	24.7		13675	24.7		
Apr16						56150	50167	5983	10.6		5983	10.6		
May16						54678	43506	11173	20.4		11173	20.4		
Jun16						51155	39022	12133	23.7		12133	23.7		

ANNUAL TOTALS				
Year	System Input Volume	Billed Metered Consumption	Losses m³	Losses %
2001/2002	847020			
2002/2003	740049	655853	84196	11.4%
2003/2004	759678	686137	71533	9.4%
2004/2005	672255	580300	111956	16.7%
2005/2006	755340	656977	98363	13.0%
2006/2007	840580	692351	148229	17.6%
2007/2008	822940	684331	138609	16.8%
2008/2009	803680	694108	109572	13.6%
2009/2010	797450	665921	131529	16.5%
2010/2011	763024	659992	93032	12.2%
2011/2012	827492	695643	131849	15.8%
2012/2013	784940	698483	86457	11.0%
2013/2014	778942	717143	61799	7.9%
2014/2015	860288	746942	113346	13.2%
2015/2016	779557	658868	120689	15.5%

**WATER BALANCE AND USAGE FOR MOORREESBURG DISTRIBUTION SYTEM**



**WATER BALANCE AND USAGE FOR MOORREESBURG DISTRIBUTION SYTEM**

