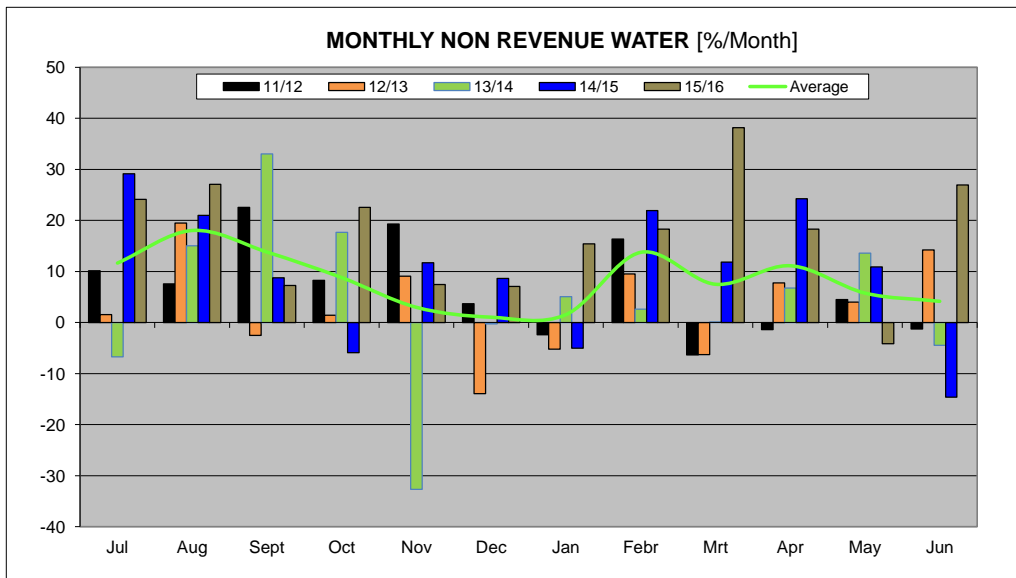
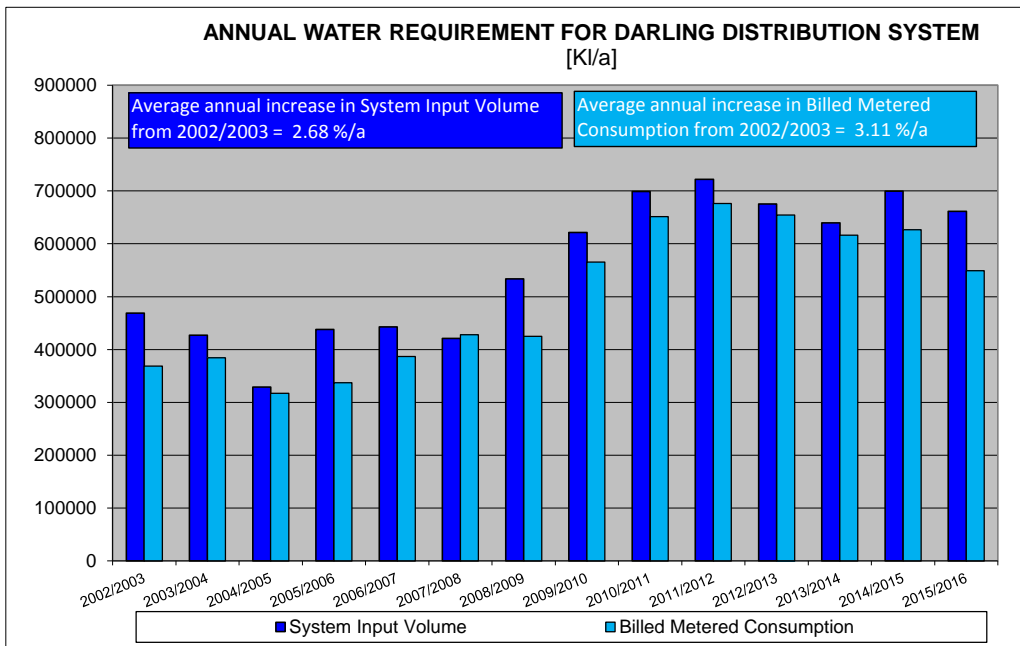
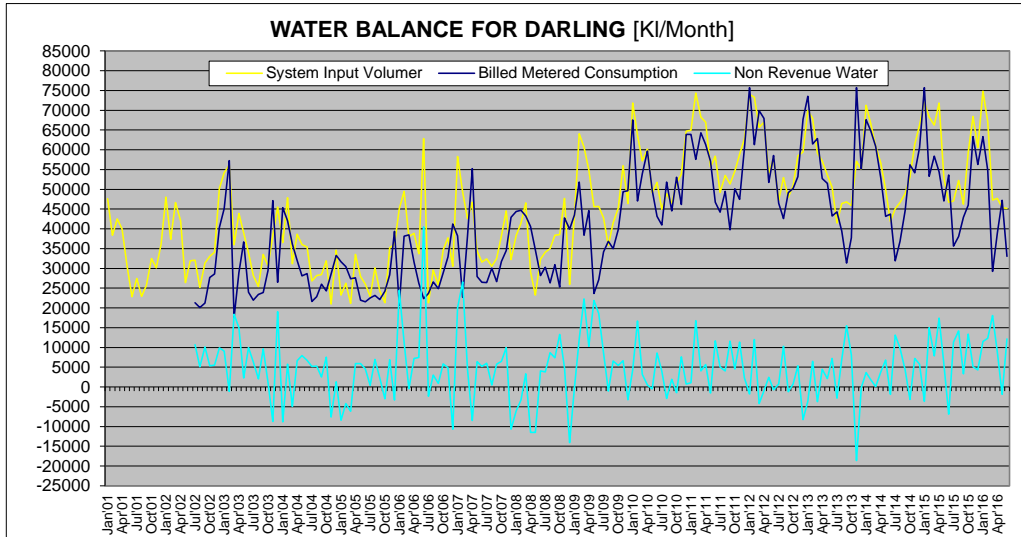


SWARTLAND MUNICIPALITY													
Darling													
Month	Year	BULK WATER SUPPLY				TREATED WATER SUPPLY				TOTALS (ONLY NETWORK LOSSES)			
		Raw Water Supply	System Input Volume	Monthly Losses [m³]	Monthly Losses [%]	System Input Volume	Billed Metered Consumption	Monthly Losses [m³]	Monthly Losses [%]	Monthly Losses [m³]	Monthly Losses [%]	Annual Losses [m³]	Annual Losses [%]
Jan01	00/01					47610							
Feb01						38380							
Mrt01						42530							
Apr01						40000							
May01						30450							
Jun01	01/02					22860							
Jul01						27450							
Aug01						22950							
Sep01						25710							
Oct01						32450							
Nov01						30120							
Dec01						36160							
Jan02						48050							
Feb02						37330							
Mrt02						46620							
Apr02	02/03					41990							
May02						26430							
Jun02						31950							
Jul02						32060	21331	10729	33.5	10729	33.5		
Aug02						25190	20110	5080	20.2	5080	20.2		
Sep02						31370	21251	10119	32.3	10119	32.3		
Oct02						33860	27723	5357	16.2	5357	16.2		
Nov02						34080	28597	5483	16.1	5483	16.1		
Dec02						50170	40298	9872	19.7	9872	19.7		
Jan03						54170	45079	9091	16.8	9091	16.8		
Feb03					56150	57233	-1083	-1.9	-1083	-1.9			
Mrt03					35970	17558	18412	51.2	18412	51.2			
Apr03					43860	28874	14986	34.2	14986	34.2			
May03					38960	36706	2254	5.8	2254	5.8			
Jun03					33930	23949	9981	29.4	9981	29.4			
Jul03	03/04					28220	21919	6301	22.3	6301	22.3		
Aug03						25410	23396	2014	7.9	2014	7.9		
Sep03						33540	23884	9656	28.8	9656	28.8		
Oct03						30630	29482	1148	3.7	1148	3.7		
Nov03						38380	47093	-8713	-22.7	-8713	-22.7		
Dec03						45480	26475	19005	41.8	19005	41.8		
Jan04						36550	45348	-8798	-24.1	-8798	-24.1		
Feb04						47830	42058	5772	12.1	5772	12.1		
Mrt04						31160	36118	-4958	-15.9	-4958	-15.9		
Apr04						38590	31979	6611	17.1	6611	17.1		
May04					36020	28082	7938	22.0	7938	22.0			
Jun04					35400	28642	6758	19.1	6758	19.1			
Jul04	04/05					26790	21603	5187	19.4	5187	19.4		
Aug04						28150	22879	5271	18.7	5271	18.7		
Sep04						28450	25965	2485	8.7	2485	8.7		
Oct04						31870	24322	7548	23.7	7548	23.7		
Nov04						21010	28579	-7569	-36.0	-7569	-36.0		
Dec04						34560	33272	1288	3.7	1288	3.7		
Jan05						23270	31666	-8396	-36.1	-8396	-36.1		
Feb05						26260	30473	-4193	-16.0	-4193	-16.0		
Mrt05						21160	27337	-6177	-29.2	-6177	-29.2		
Apr05						33550	27645	5905	17.6	5905	17.6		
May05					27910	21961	5949	21.3	5949	21.3			
Jun05					26030	21522	4508	17.3	4508	17.3			
Jul05	05/06					22910	22529	381	1.7	381	1.7		
Aug05						30110	23183	6947	23.1	6947	23.1		
Sep05						24320	22075	2245	9.2	2245	9.2		
Oct05						21270	24246	-2976	-14.0	-2976	-14.0		
Nov05						35200	28311	6889	19.6	6889	19.6		
Dec05						36030	39350	-3320	-9.2	-3320	-9.2		
Jan06						45140	23665	24475	54.2	24475	54.2		
Feb06						49500	38172	11328	22.9	11328	22.9		
Mrt06						38040	38495	-455	-1.2	-455	-1.2		
Apr06						38860	31617	7243	18.6	7243	18.6		
May06					33700	26248	7452	22.1	7452	22.1			
Jun06	06/07					62842	22330	40512	64.5	40512	64.5		
Jul06						21304	23666	-2362	-11.1	-2362	-11.1		
Aug06						29590	26596	2994	10.1	2994	10.1		
Sep06						25790	24891	899	3.5	899	3.5		
Oct06						34690	28953	5837	16.8	5837	16.8		
Nov06						37760	32938	4822	12.8	4822	12.8		
Dec06						30520	41219	-10699	-35.1	-10699	-35.1		
Jan07						58280	38264	20016	34.3	20016	34.3		
Feb07						49260	22666	26594	54.0	26594	54.0		
Mrt07						42610	38105	4505	10.6	4505	10.6		
Apr07					46740	55237	-8497	-18.2	-8497	-18.2			
May07					34400	27963	6437	18.7	6437	18.7			
Jun07					31610	26452	5158	16.3	5158	16.3			
Jul07	07/08					32420	26399	6021	18.6	6021	18.6		
Aug07						30560	30029	531	1.7	531	1.7		
Sep07						32450	26660	5790	17.8	5790	17.8		
Oct07						38210	31758	6452	16.9	6452	16.9		
Nov07						44510	34535	9975	22.4	9975	22.4		
Dec07						32210	42923	-10713	-33.3	-10713	-33.3		
Jan08						38310	44404	-6094	-15.9	-6094	-15.9		
Feb08						41420	44720	-3300	-8.0	-3300	-8.0		
Mrt08						46550	43210	3340	7.2	3340	7.2		
Apr08						29050	40650	-11595	-38.6	-11595	-38.6		
May08					23210	34661	-11451	-49.3	-11451	-49.3			
Jun08					32310	28218	4092	12.7	4092	12.7			
Jul08	08/09					34130	30281	3849	11.3	3849	11.3		
Aug08						34970	26311	8659	24.8	8659	24.8		
Sep08						38360	30948	7412	19.3	7412	19.3		
Oct08						38570	25297	13273	34.4	13273	34.4		
Nov08						47690	42783	4907	10.3	4907	10.3		
Dec08						25890	39964	-14074	-54.4	-14074	-54.4		
Jan09						43240	43467	-227	-0.5	-227	-0.5		
Feb09						64040	51858	12182	19.0	12182	19.0		
Mrt09						60670	39420	22250	36.7	22250	36.7		
Apr09						54900	44625	10275	18.7	10275	18.7		
May09					45570	23685	21885	48.0	21885	48.0			
Jun09					45680	27154	18526	40.6	18526	40.6			
Jul09	09/10					42740	34147	8593	20.1	8593	20.1		
Aug09						35820	38887	-1067	-3.0	-1067	-3.0		
Sep09						41540	34967	6573	15.8	6573	15.8		
Oct09						45291	39833	5458	12.1	5458	12.1		
Nov09						55993	49373	6620	11.8	6620	11.8		
Dec09						46370	49606	-3236	-7.0	-3236	-7.0		
Jan10						71841	67502	4339	6.0	4339	6.0		
Feb10						63698	47025	16671	26.2	16671	26.2		
Mrt10						57134	63963	3181	5.6	3181	5.6		
Apr10						60146	59653	493	0.8	493	0.8		
May10					49193	49695	-502	-1.0	-502	-1.0			
Jun10					51716	43124	8592	16.6	8592	16.6			
Jul10	10/11					44976	41010	3966	8.8	3966	8.8		
Aug10						48038	51847	-2909	-5.9	-2909	-5.9		
Sep10						46487	44566	1921	4.1	1921	4.1		
Oct10						51593	53011	-1418	-2.7	-1418	-2.7		
Nov10						53816	46182	7634	14.2	7634	14.2		
Dec10						64686	63919	767	1.2	767	1.2		
Jan11						64958	63919	1039	1.6	1039	1.6		
Feb11						74334	57569	16765	22.6	16765	22.6		
Mrt11						68281	64254	4027	5.9	4027	5.9		
Apr11						66940	61292	5648	8.4	5648	8.4		
May11					55614	57117	-1503	-2.7	-1503	-2.7			
Jun11					58420	46720	11700	20.0	11700	20.0			

SWARTLAND MUNICIPALITY													
Darling													
Month	Year	BULK WATER SUPPLY				TREATED WATER SUPPLY				TOTALS (ONLY NETWORK LOSSES)			
		Raw Water Supply	System Input Volume	Monthly Losses [m³]	Monthly Losses [%]	System Input Volume	Billed Metered Consumption	Monthly Losses [m³]	Monthly Losses [%]	Monthly Losses [m³]	Monthly Losses [%]	Annual Losses [m³]	Annual Losses [%]
Jul 11	11/12					49206	44209	4997	10.2	4997	10.2	45687	6.3%
Aug 11						53514	49455	4059	7.6	4059	7.6		
Sep 11						51355	39757	11598	22.6	11598	22.6		
Oct 11						54607	50088	4519	8.3	4519	8.3		
Nov 11						58931	47462	11369	19.3	11369	19.3		
Dec 11						62762	69449	2304	3.7	2304	3.7		
Jan 12						73974	75749	-1775	-2.4	-1775	-2.4		
Feb 12						73295	61300	11995	16.4	11995	16.4		
Mar 12						65682	69850	-4168	-6.3	-4168	-6.3		
Apr 12						66988	67911	-922	-1.4	-922	-1.4		
May 12						54170	51731	2439	4.5	2439	4.5		
Jun 12						57816	58544	-728	-1.3	-728	-1.3		
Jul 12	12/13				47231	46402	739	1.6	739	1.6			
Aug 12					52955	42633	10322	19.5	10322	19.5			
Sep 12					47971	49175	-1204	-2.5	-1204	-2.5			
Oct 12					50955	50237	718	1.4	718	1.4			
Nov 12					58494	53179	5315	9.1	5315	9.1			
Dec 12					59440	67708	-8268	-13.9	-8268	-13.9			
Jan 13					69902	73558	-3656	-5.2	-3656	-5.2			
Feb 13					67897	61435	6462	9.5	6462	9.5			
Mar 13					59145	62869	-3724	-6.3	-3724	-6.3			
Apr 13					57164	52762	4402	7.8	4402	7.8			
May 13					53640	51483	2147	4.0	2147	4.0			
Jun 13					50420	43236	7184	14.2	7184	14.2			
Jul 13	13/14				41501	44293	-2792	-6.7	-2792	-6.7			
Aug 13					46408	39422	6986	15.1	6986	15.1			
Sep 13					46834	31372	15462	33.0	15462	33.0			
Oct 13					45885	37770	8115	17.7	8115	17.7			
Nov 13					57056	75704	-18648	-32.7	-18648	-32.7			
Dec 13					55045	55184	-139	-0.3	-139	-0.3			
Jan 14					71227	67609	3618	5.1	3618	5.1			
Feb 14					66449	64691	1758	2.6	1758	2.6			
Mar 14					60893	60912	81	0.1	81	0.1			
Apr 14					56609	52793	3816	6.7	3816	6.7			
May 14					49978	43178	6800	13.6	6800	13.6			
Jun 14					41859	43736	-1877	-4.5	-1877	-4.5			
Jul 14	14/15				45077	31945	13132	29.1	13132	29.1			
Aug 14					46664	36871	9793	21.0	9793	21.0			
Sep 14					48909	44627	4282	8.8	4282	8.8			
Oct 14					53102	56228	-3126	-5.9	-3126	-5.9			
Nov 14					61350	54152	7198	11.7	7198	11.7			
Dec 14					66277	60530	5747	8.7	5747	8.7			
Jan 15					72036	75671	-3635	-5.0	-3635	-5.0			
Feb 15					68296	53315	14981	21.9	14981	21.9			
Mar 15					66276	58413	7863	11.9	7863	11.9			
Apr 15					71811	64412	17399	24.2	17399	24.2			
May 15					52843	47087	5756	10.9	5756	10.9			
Jun 15					46738	53574	-6836	-14.6	-6836	-14.6			
Jul 15	15/16				47034	35669	11365	24.2	11365	24.2			
Aug 15					52242	38085	14157	27.1	14157	27.1			
Sep 15					46252	42901	3351	7.2	3351	7.2			
Oct 15					59366	45974	13392	22.6	13392	22.6			
Nov 15					68458	63354	5104	7.5	5104	7.5			
Dec 15					60568	56288	4280	7.1	4280	7.1			
Jan 16					74826	63308	11518	15.4	11518	15.4			
Feb 16					67014	54734	12280	18.3	12280	18.3			
Mar 16					47285	29243	18042	38.2	18042	38.2			
Apr 16					47685	39967	8718	18.3	8718	18.3			
May 16					45373	47242	-1869	-4.1	-1869	-4.1			
Jun 16					45227	33049	12178	26.9	12178	26.9			

ANNUAL TOTALS				
Year	System Input Volume	Billed Metered Consumption	Losses m³	Losses %
2001/2002	407210			
2002/2003	468990	368709	100281	21.4%
2003/2004	427210	384476	42734	10.0%
2004/2005	329030	317224	11806	3.6%
2005/2006	437922	337200	100722	23.0%
2006/2007	42554	386820	55734	12.6%
2007/2008	421210	429072	-6862	-1.6%
2008/2009	533710	424793	108917	20.4%
2009/2010	621480	565765	55715	9.0%
2010/2011	699043	651406	47637	6.8%
2011/2012	722191	676504	45687	6.3%
2012/2013	675214	654737	20477	3.0%
2013/2014	639744	616564	23180	3.6%
2014/2015	699379	626825	72554	10.4%
2015/2016	661330	548814	112516	17.0%

WATER BALANCE AND USAGE FOR DARLING DISTRIBUTION SYSTEM



WATER BALANCE AND USAGE FOR DARLING DISTRIBUTION SYSTEM

