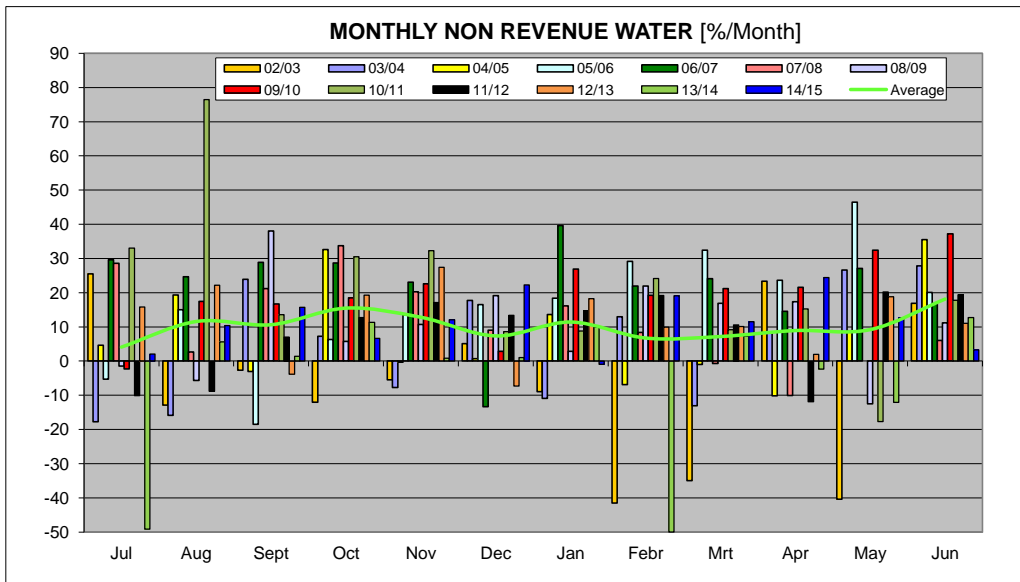
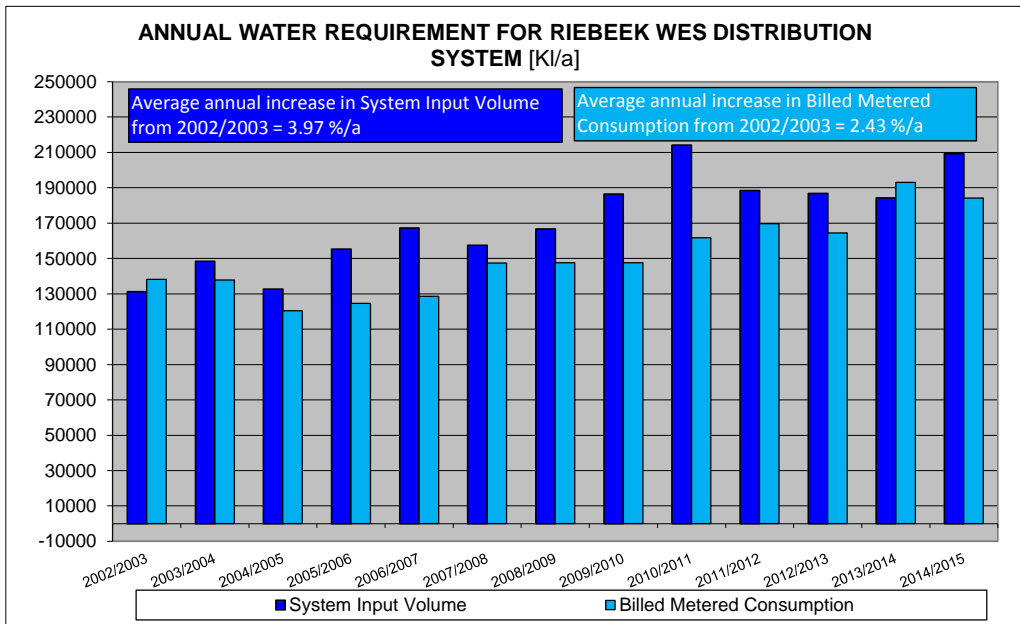
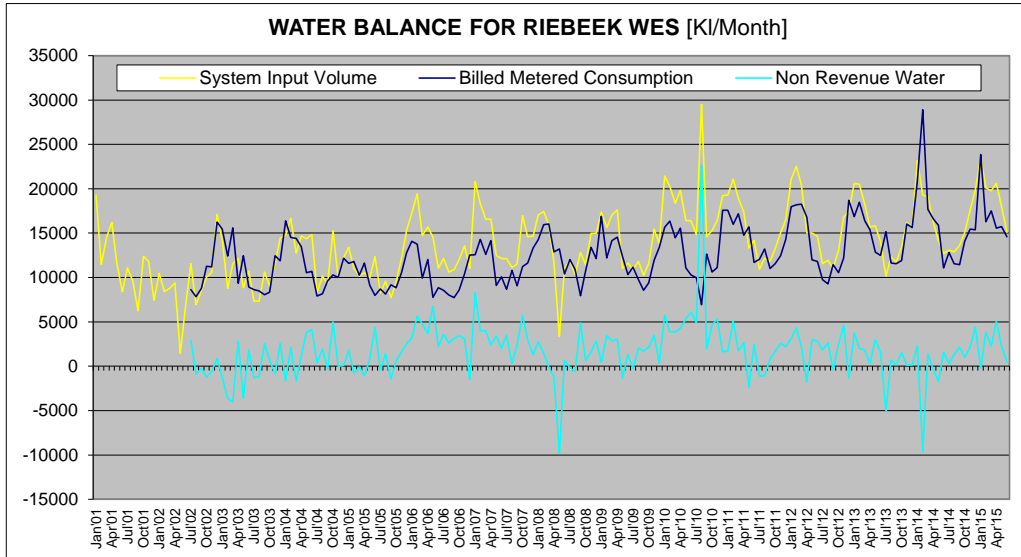


SWARTLAND MUNICIPALITY													
Riebeeck Wes													
Month	Year	BULK WATER SUPPLY				TREATED WATER SUPPLY				TOTALS (ONLY NETWORK LOSSES)			
		Raw Water Supply	System Input Volume	Monthly Losses [m³]	Monthly Losses [%]	System Input Volume	Billed Metered Consumption	Monthly Losses [m³]	Monthly Losses [%]	Monthly Losses [m³]	Monthly Losses [%]	Annual Losses [m³]	Annual Losses [%]
Jul12	12/13					11571	9744	1827	15.8	1527	15.8		
Aug12						11935	9291	2644	22.2	2644	22.2		
Sep12						11032	11454	-422	-3.8	-422	-3.8		
Oct12						13070	10552	2518	19.3	2518	19.3		
Nov12						16844	12222	4622	27.4	4622	27.4		
Dec12						17405	18679	-1274	-7.3	-1274	-7.3		
Jan13						20616	16862	3754	18.2	3754	18.2		
Feb13						20513	18473	2040	9.9	2040	9.9		
Mrt13						18214	16381	1833	10.1	1833	10.1		
Apr13						15691	15389	302	1.9	302	1.9		
May13						15824	12841	2983	18.9	2983	18.9		
Jun13						14029	12490	1539	11.0	1539	11.0		
Jul13	13/14				10162	15159	-4997	-49.2	-4997	-49.2			
Aug13					12330	11638	692	5.6	692	5.6			
Sep13					11718	11553	165	1.4	165	1.4			
Oct13					13420	11903	1517	11.3	1517	11.3			
Nov13					16161	16023	138	0.9	138	0.9			
Dec13					15790	15623	167	1.1	167	1.1			
Jan14					23167	20876	2291	9.9	2291	9.9			
Feb14					19272	28900	-9628	-50.0	-9628	-50.0			
Mrt14					19086	17699	1387	7.3	1387	7.3			
Apr14					16223	16608	-385	-2.4	-385	-2.4			
May14					14169	15592	-11713	-12.1	-11713	-12.1			
Jun14					12712	11096	1616	12.7	1616	12.7			
Jul14	14/15				13072	12807	265	2.0	265	2.0			
Aug14					12979	11543	1336	10.4	1336	10.4			
Sep14					13595	11464	2131	15.7	2131	15.7			
Oct14					15060	14064	996	6.6	996	6.6			
Nov14					17573	15446	2127	12.1	2127	12.1			
Dec14					19914	15396	4418	22.3	4418	22.3			
Jan15					23614	23839	-225	-1.0	-225	-1.0			
Feb15					20117	16282	3835	19.1	3835	19.1			
Mrt15					19784	17507	2277	11.5	2277	11.5			
Apr15					20616	15575	5041	24.5	5041	24.5			
May15					18021	15743	2278	12.6	2278	12.6			
Jun15						15082	14595	487	3.2	487	3.2		

ANNUAL TOTALS				
Year	System Input Volume	Billed Metered Consumption	Losses m³	Losses %
2001/2002	103715	138118	-34403	-33.2%
2002/2003	131151	138118	-6968	-5.3%
2003/2004	148353	137899	10454	7.0%
2004/2005	132657	120439	12218	9.2%
2005/2006	153296	124638	28658	18.7%
2006/2007	167235	128695	38540	23.1%
2007/2008	157435	147476	9959	6.3%
2008/2009	168745	147690	21055	12.4%
2009/2010	185384	147610	37774	20.3%
2010/2011	214216	161779	52437	24.5%
2011/2012	188371	169603	18768	10.0%
2012/2013	186744	164368	22376	12.0%
2013/2014	184210	152960	31250	17.0%
2014/2015	209227	184261	24966	11.9%

WATER BALANCE AND USAGE FOR RIEBEEK WES DISTRIBUTION SYSTEM



WATER BALANCE AND USAGE FOR RIEBEEK WES DISTRIBUTION SYSTEM

