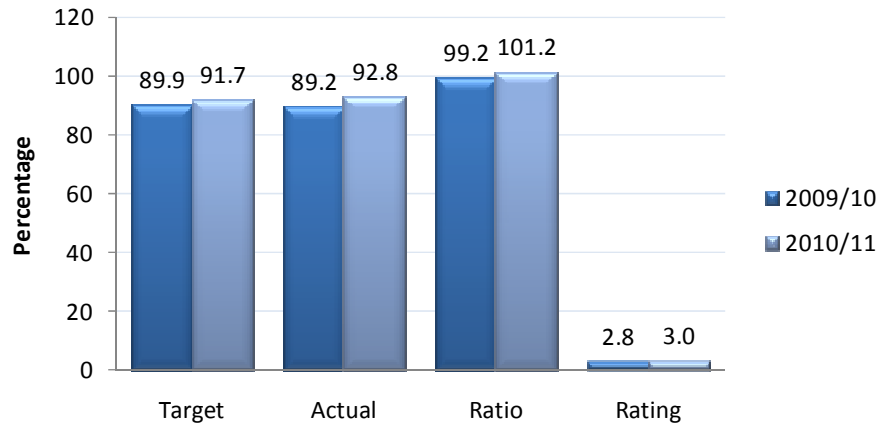


**PERFORMANCE COMPARISON BETWEEN THE 2009/10 AND 2010/11 FINANCIAL YEARS -  
Per department and service**

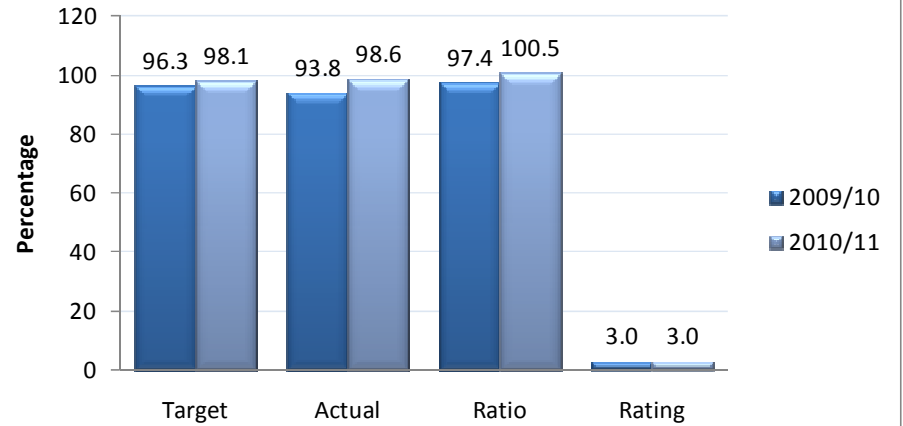
*Note: The ratios in the charts that follow are calculated as follows: Actual % ÷ Target % X 100*

# CIVIL ENGINEERING SERVICES

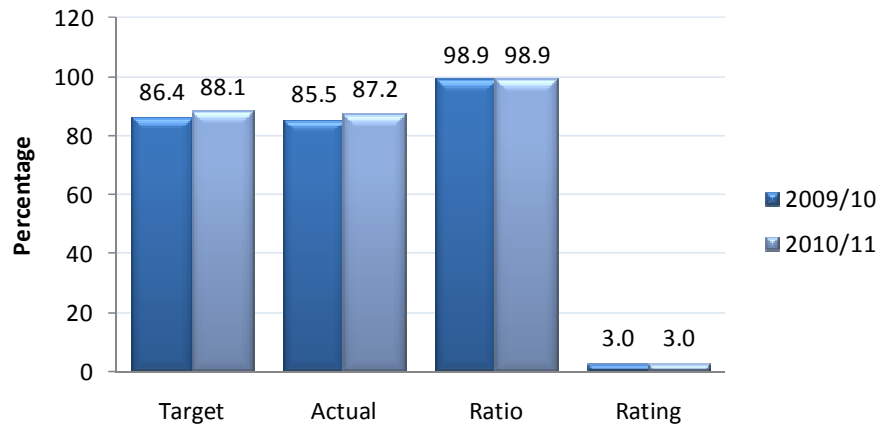
## Management



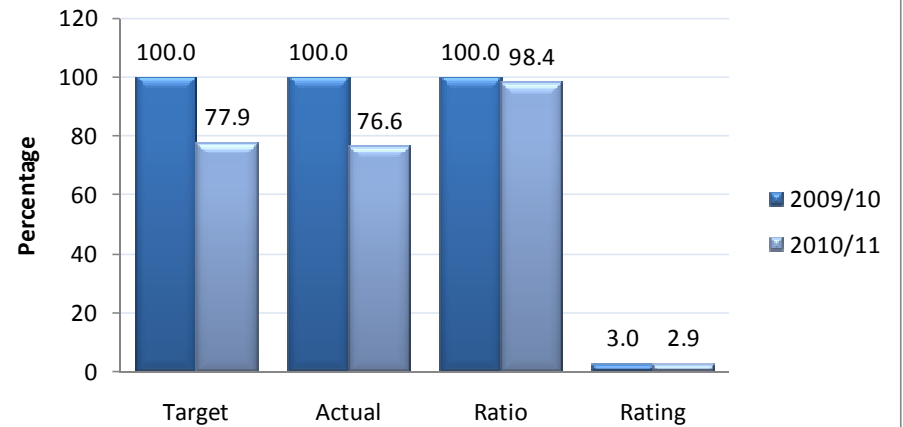
## Civil Services



## Cleaning Services

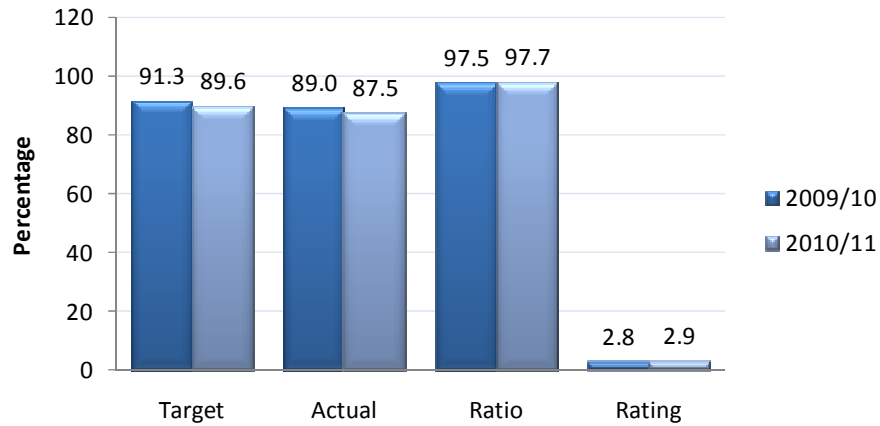


## Building Services

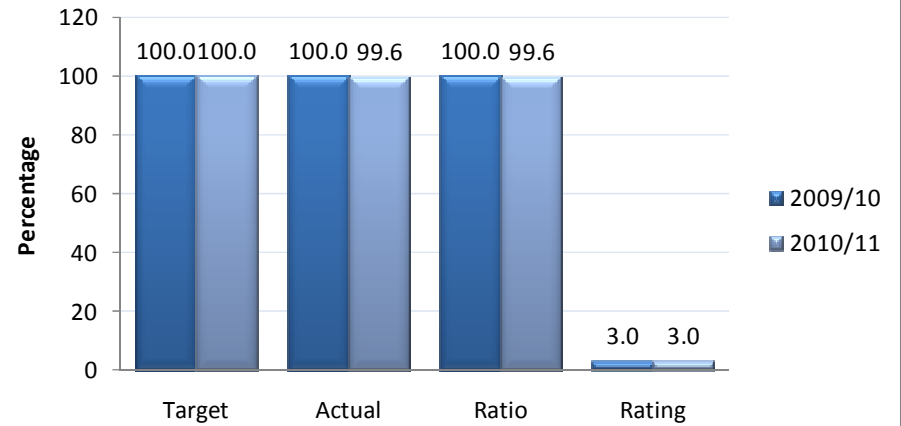


# FINANCIAL SERVICES

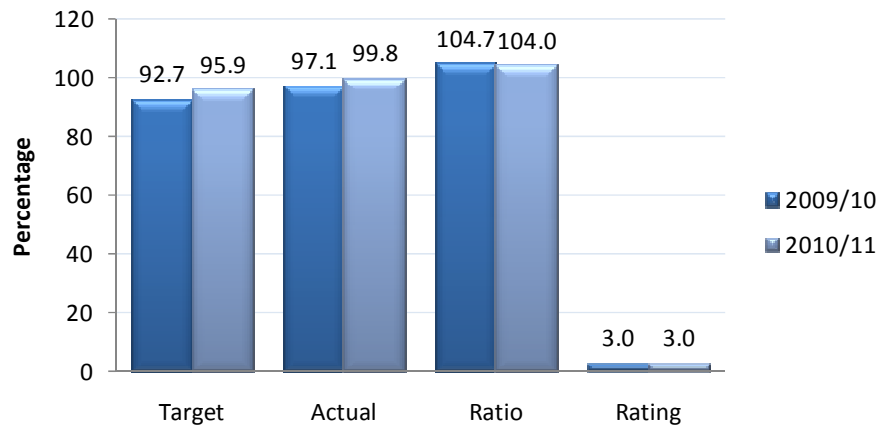
## Management



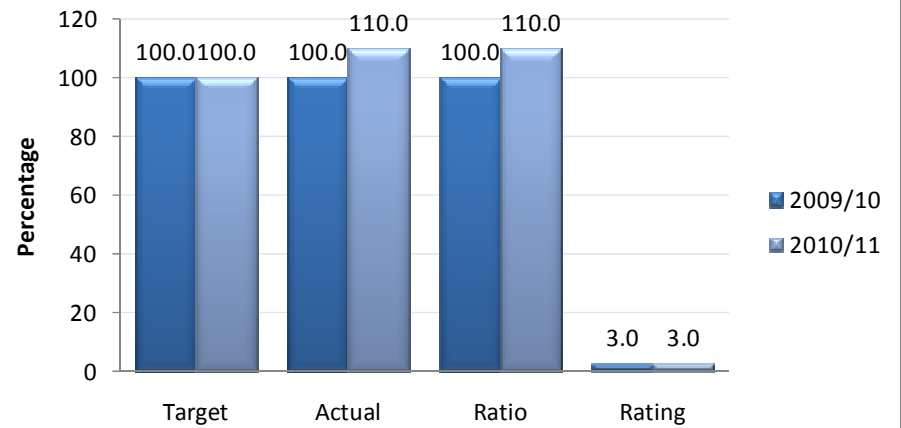
## Budgeting



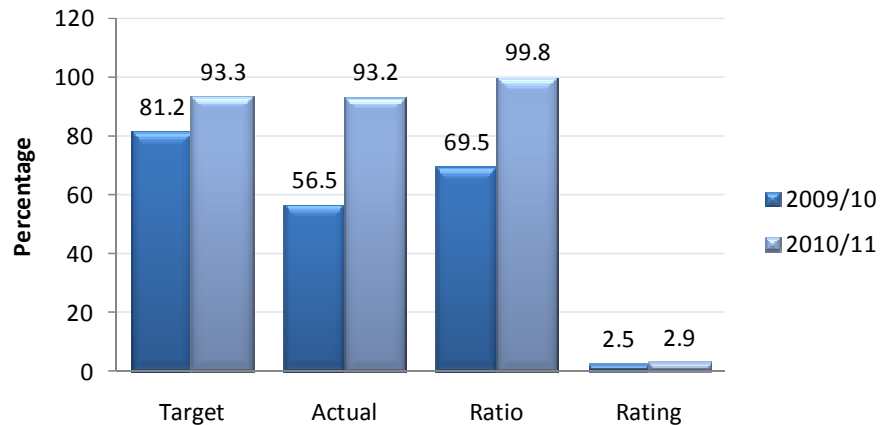
## Credit Control



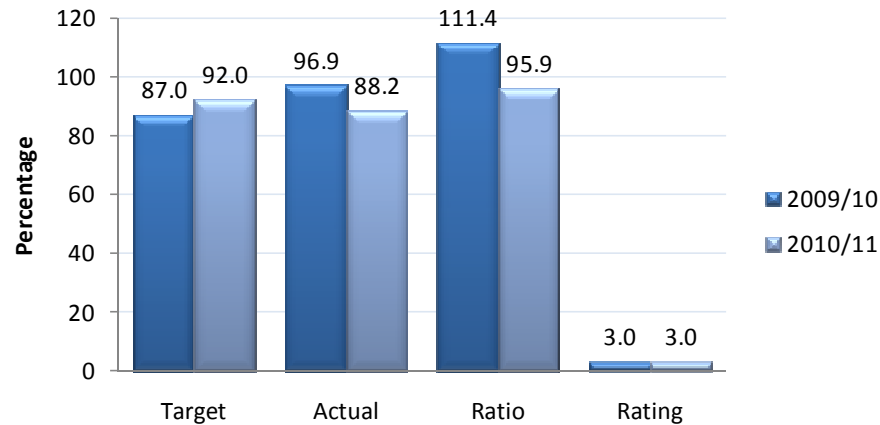
## Financial Statements



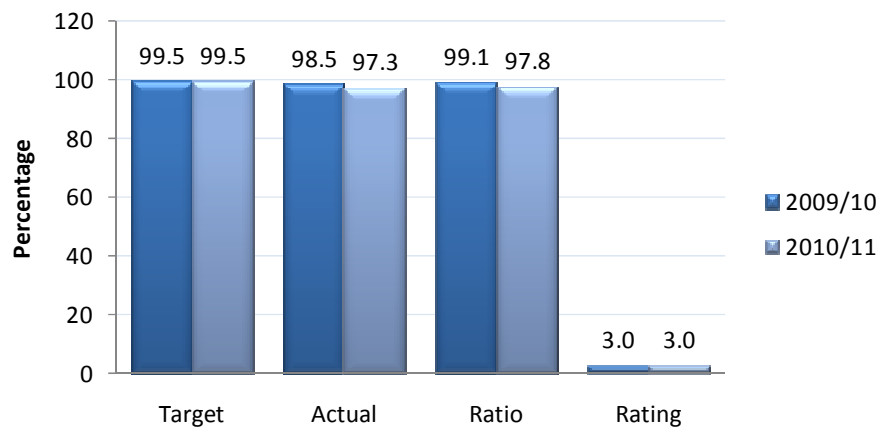
### Supply Chain Management



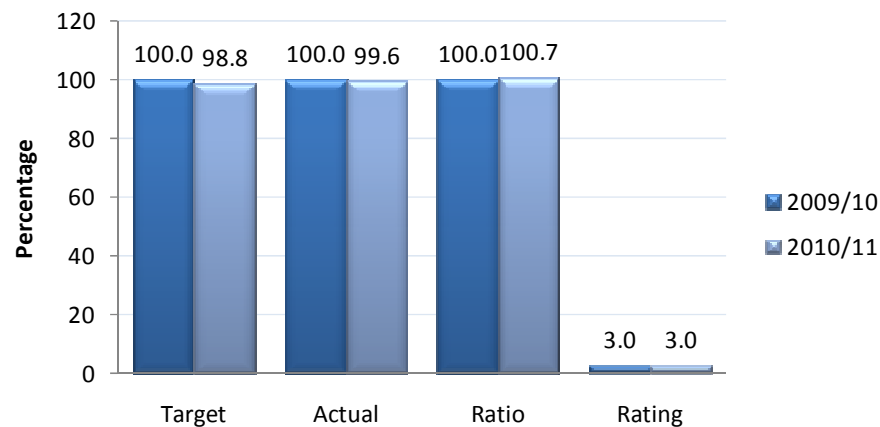
### Information Management



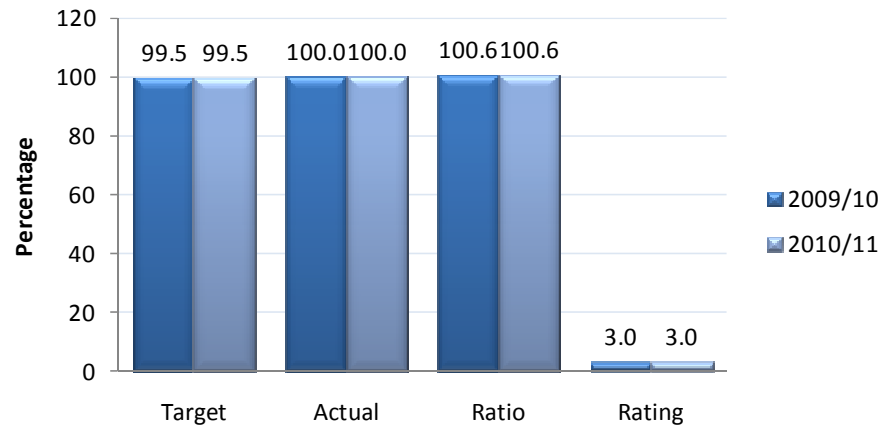
### Income



### Expenditure

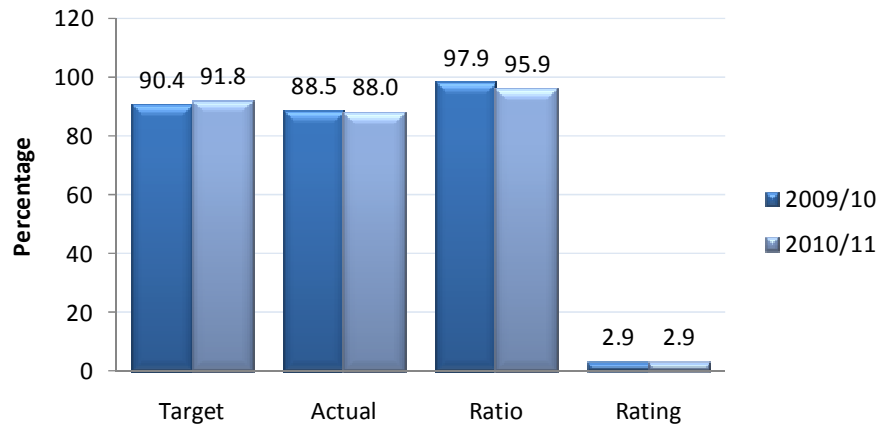


## Asset and Vehicle Management

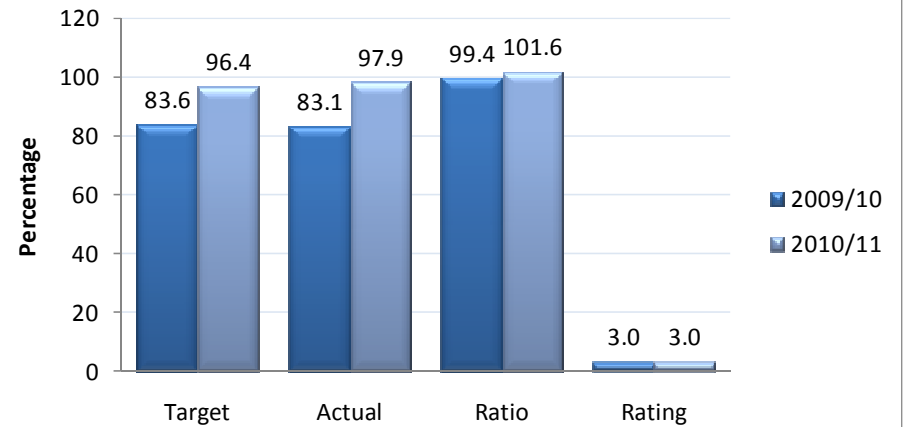


# ELECTRICAL ENGINEERING SERVICES

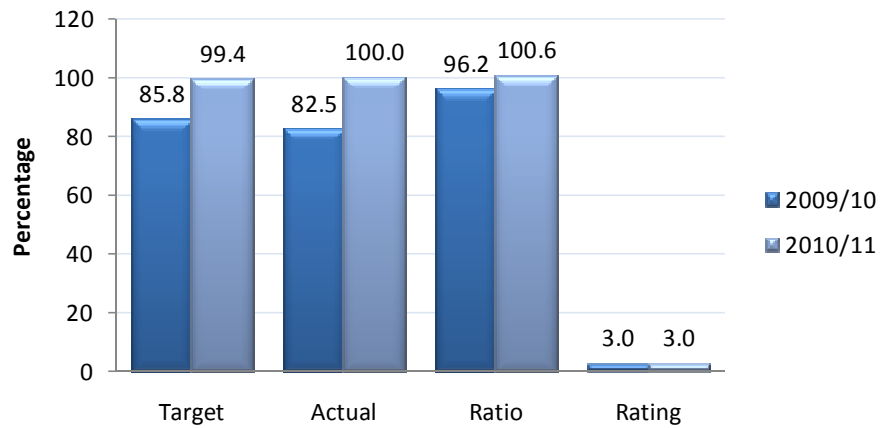
## Management



## Performance - T Rossouw

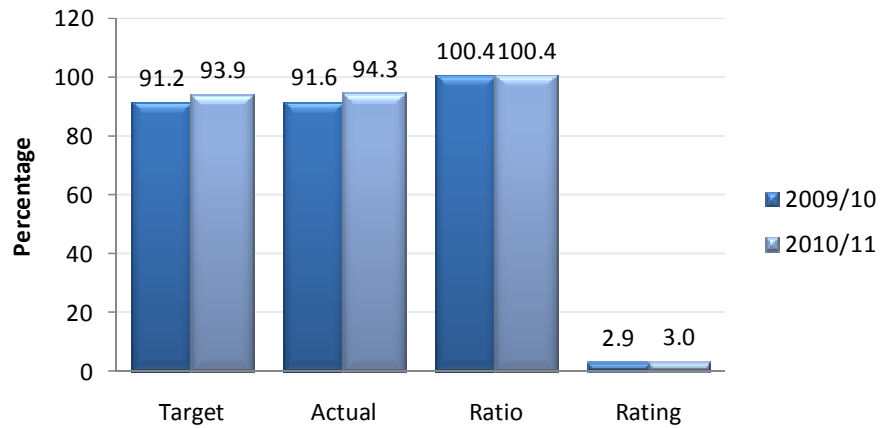


## Performance - MJ Swanepoel

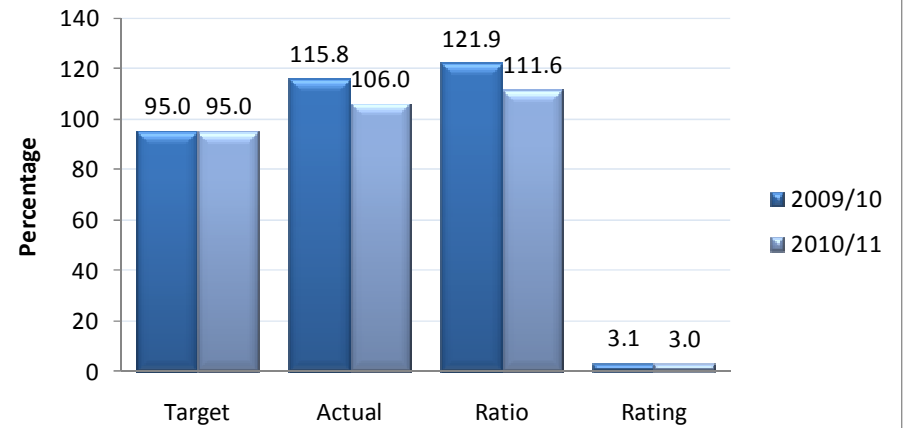


# PROTECTION SERVICES

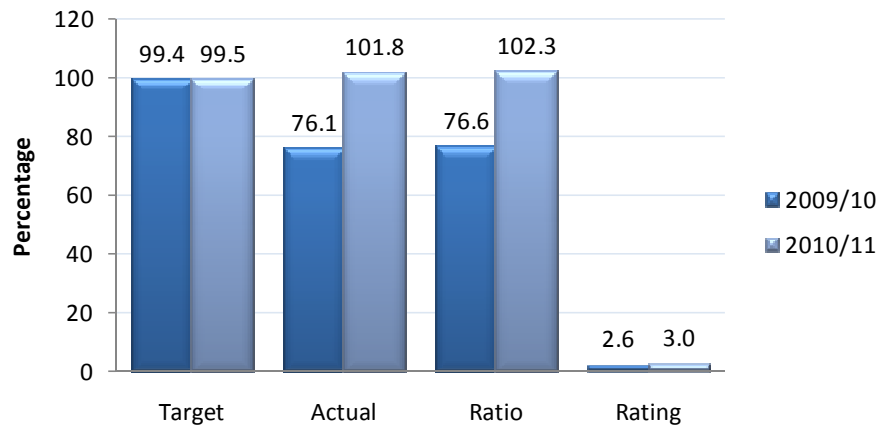
## Management



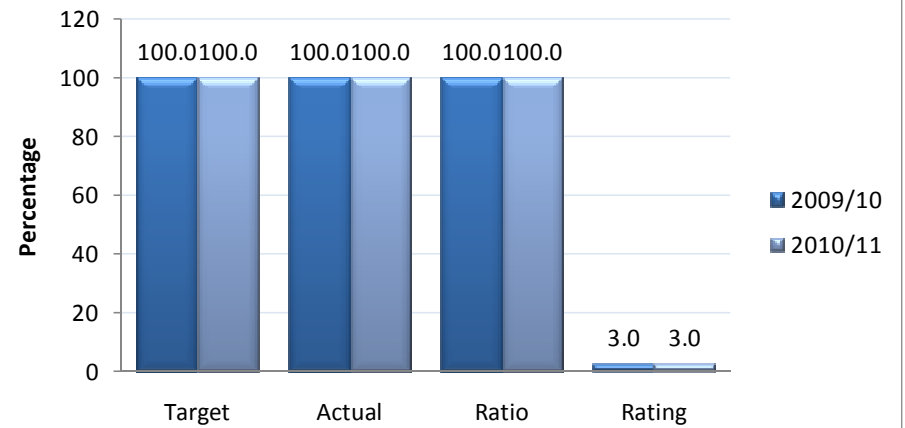
## Municipal Police Services



## Fire and Emergency Services

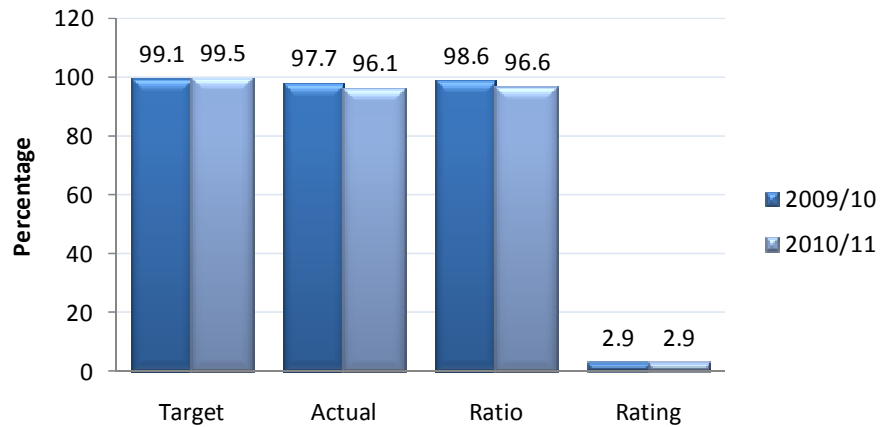


## Harbour: Yzerfontein

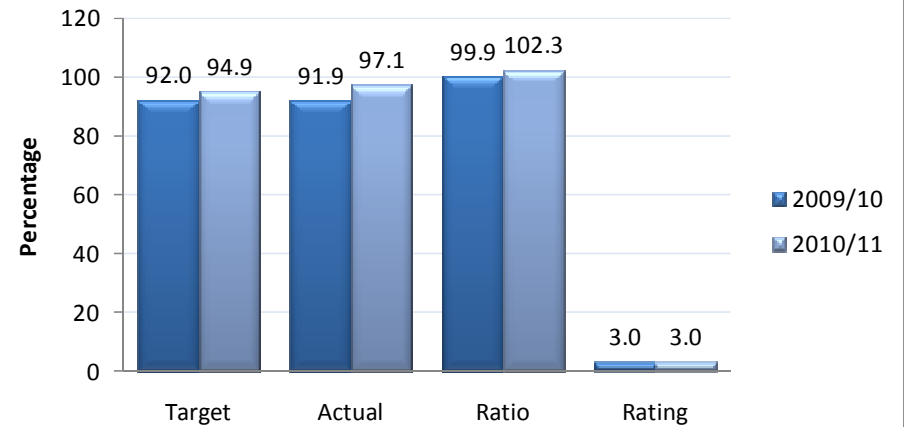


# OFFICE OF THE MUNICIPAL MANAGER

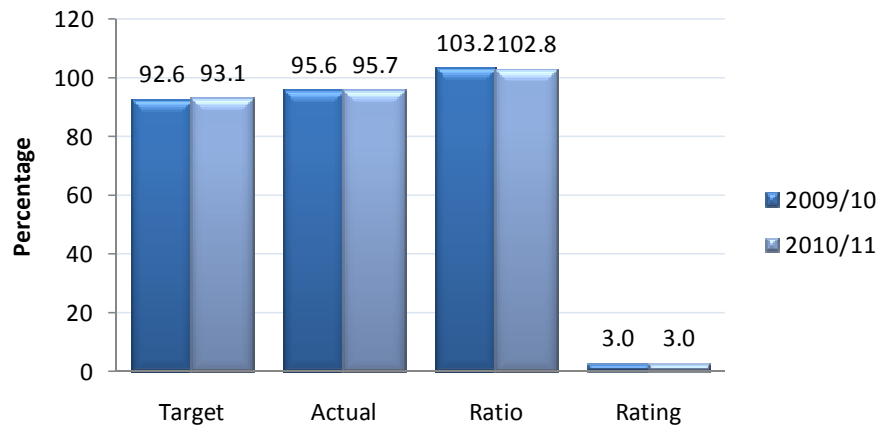
## Good Governance and LED



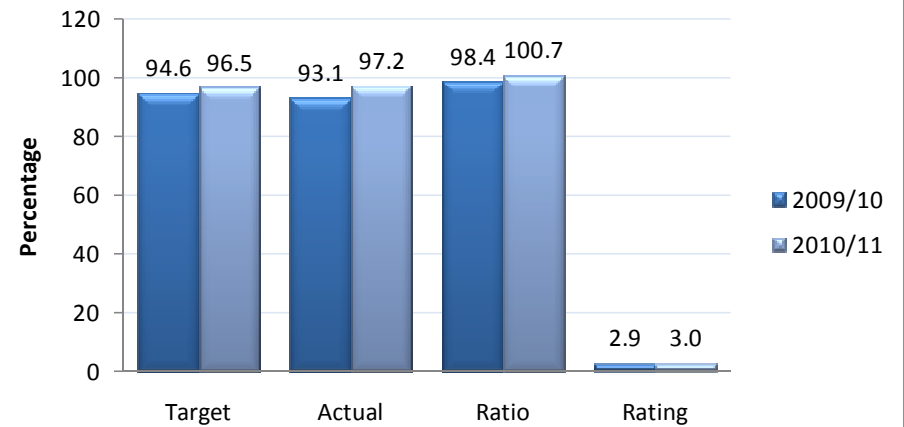
## Basic Service Delivery



## Institutional Development



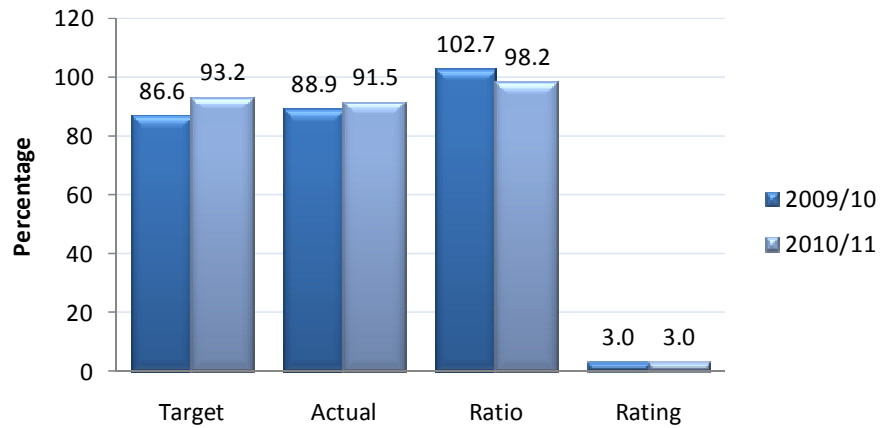
## Financial Viability



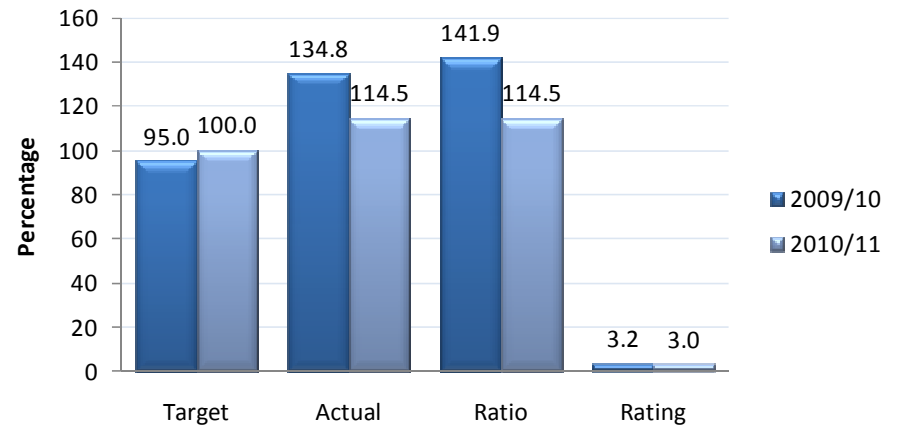


# DEVELOPMENT SERVICES

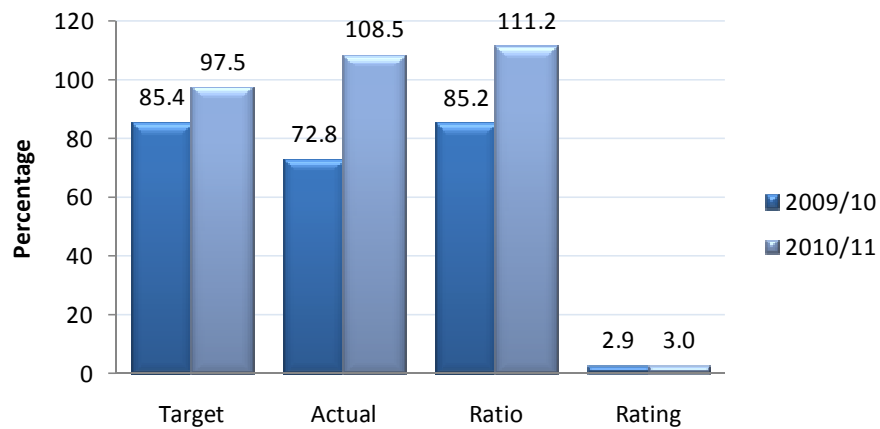
## Management



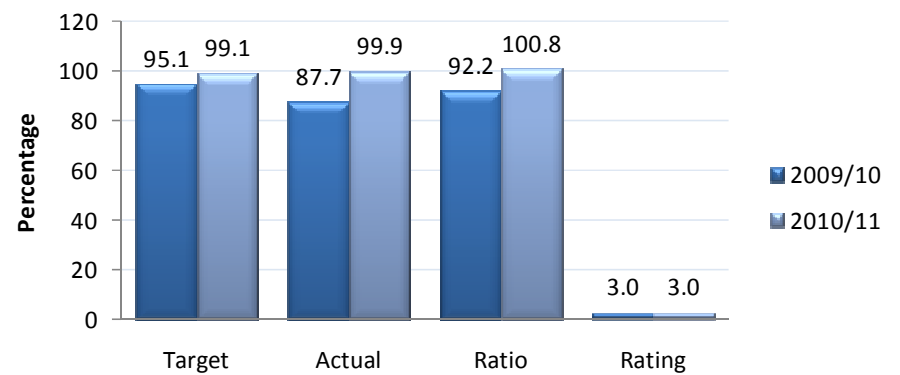
## Community Development



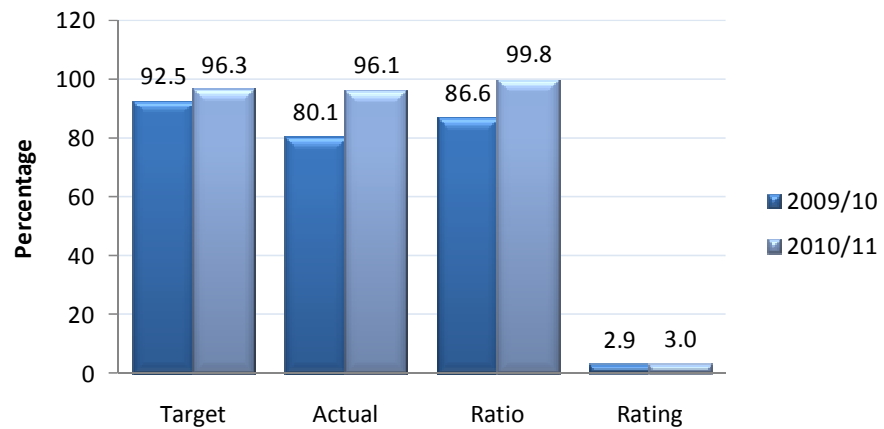
## Housing



## Planning, Building Control and Valuations

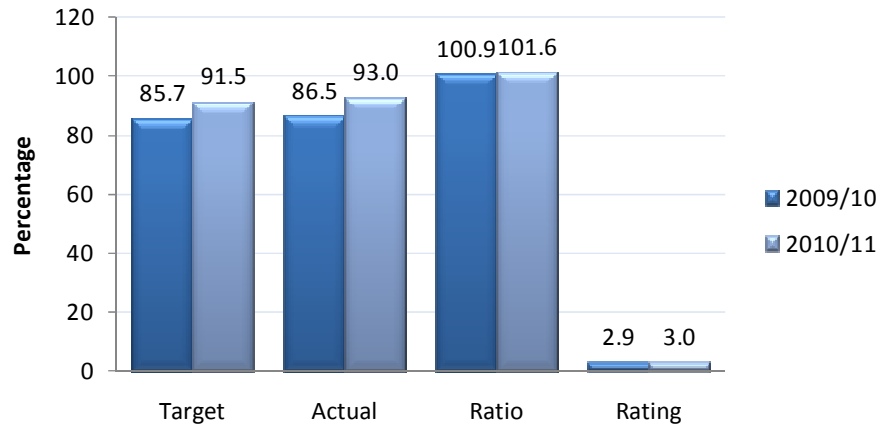


## Occupational Health

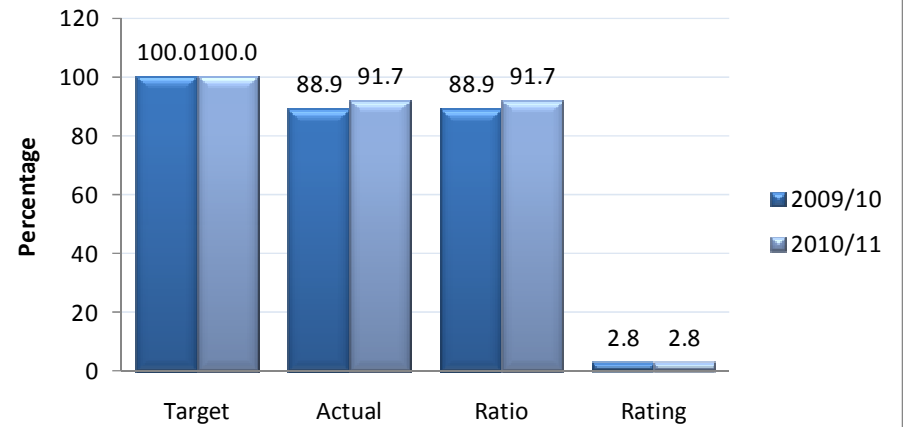


# CORPORATE SERVICES

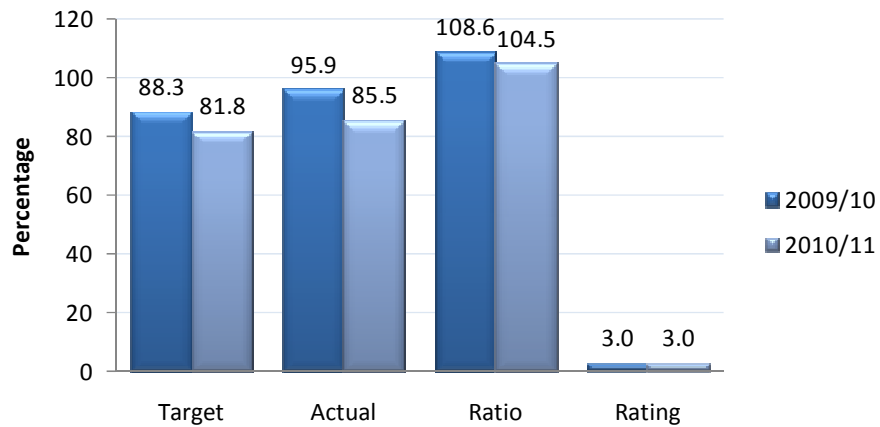
## Management



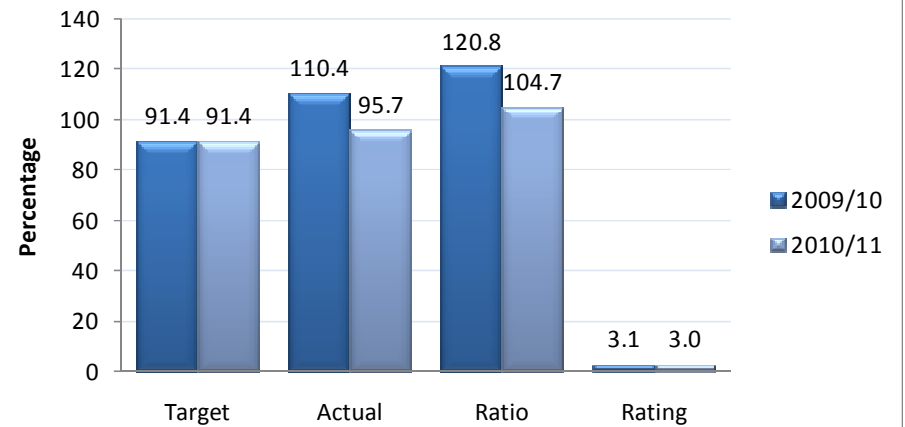
## General Support



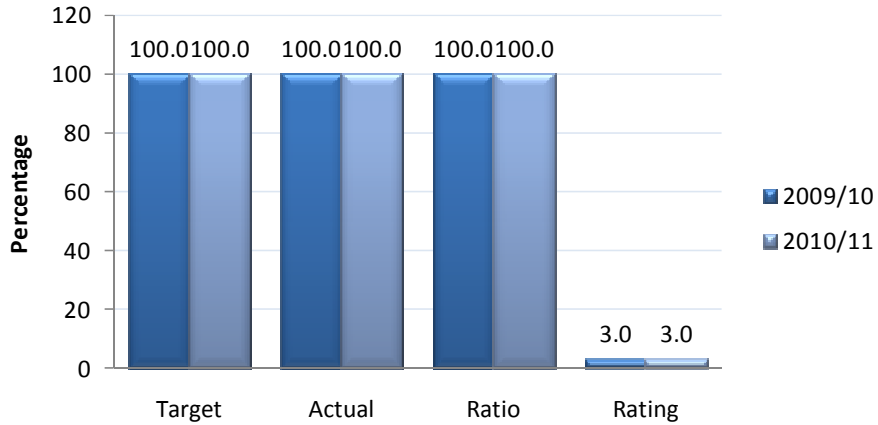
## Human Resource Services



## Secretariat and Record Management



### Properties and Contracts



### Communication and PR

