

## SWARTLAND MUNISIPALITEIT

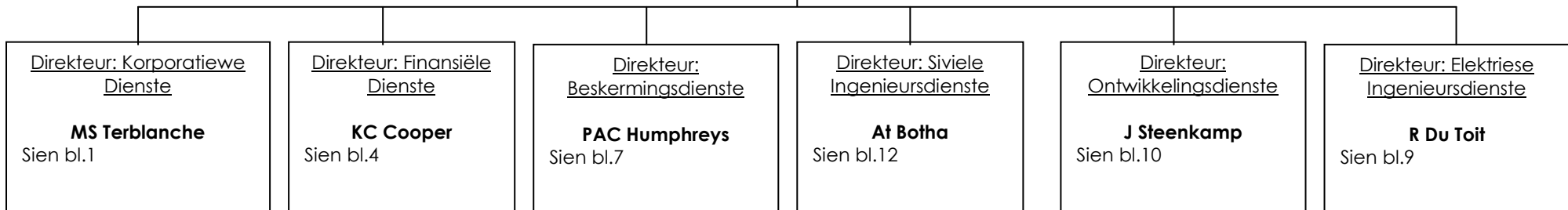
MUNISIPALE BESTUURDER  
**J J Scholtz**

Bestuurder: Interne Oudit (T15)  
P le Roux

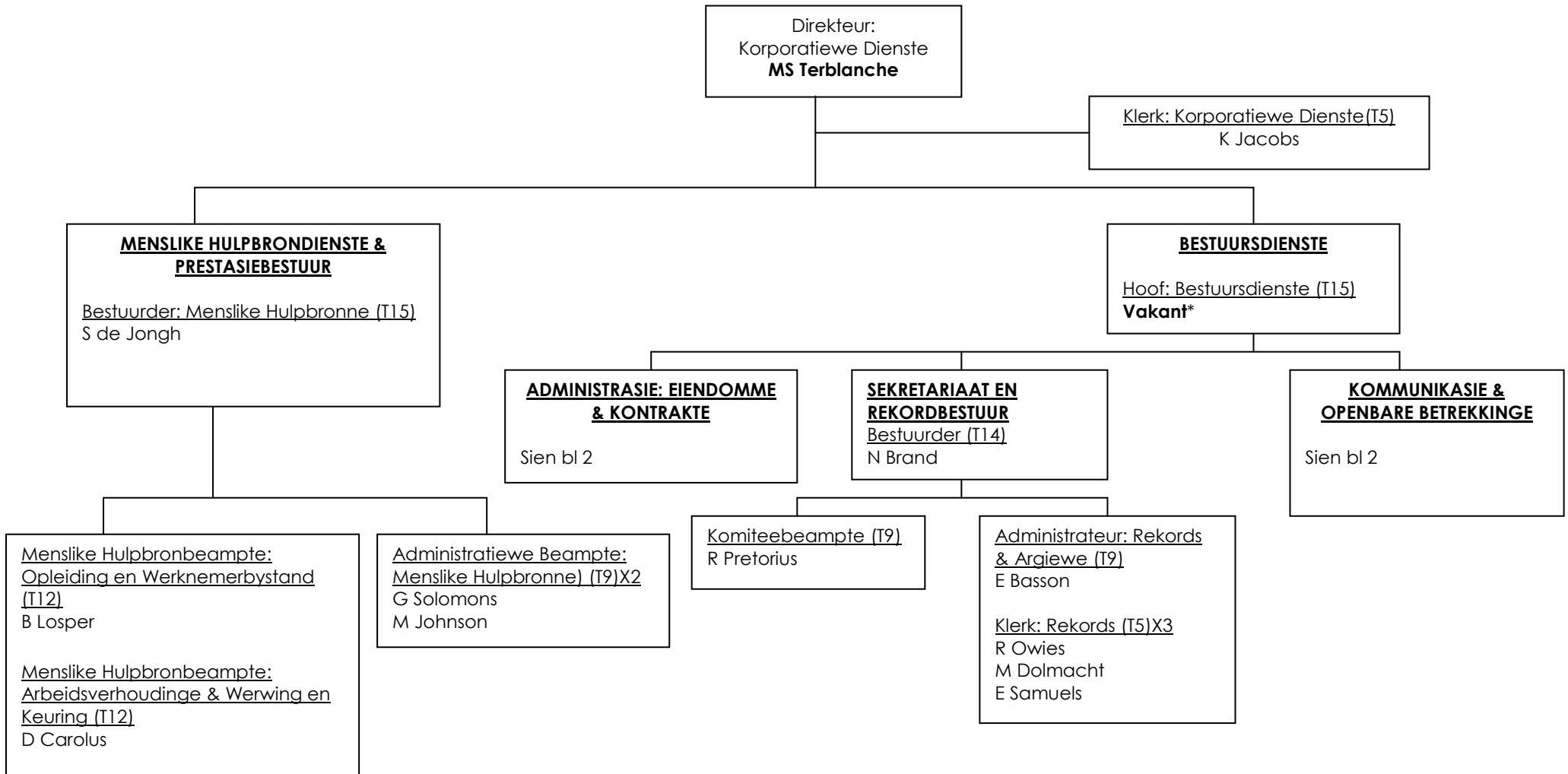
Persoonlike Assistent tot MB (T10)  
K Smit

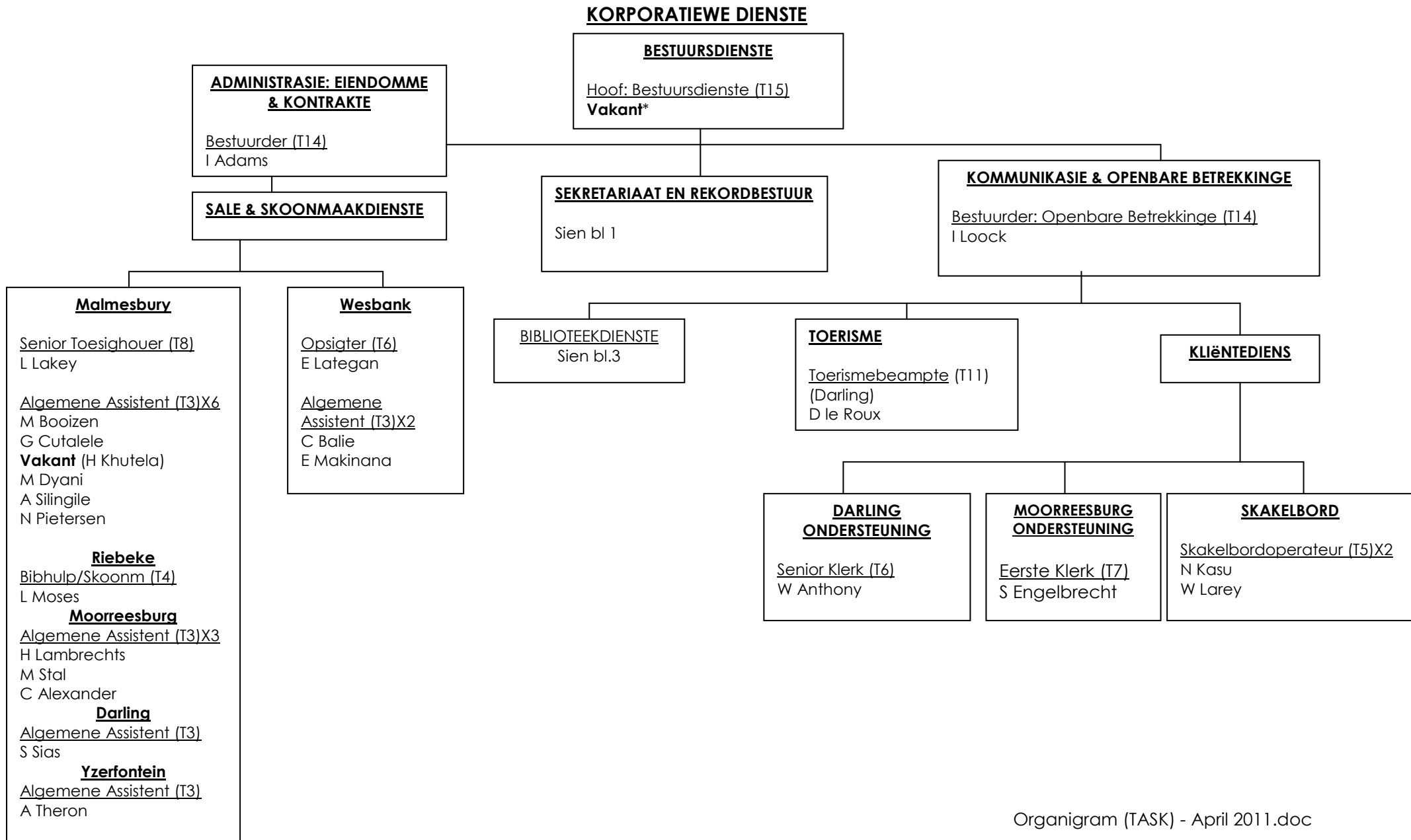
Bestuurder: Strategiese Dienste (T16)  
L Fourie

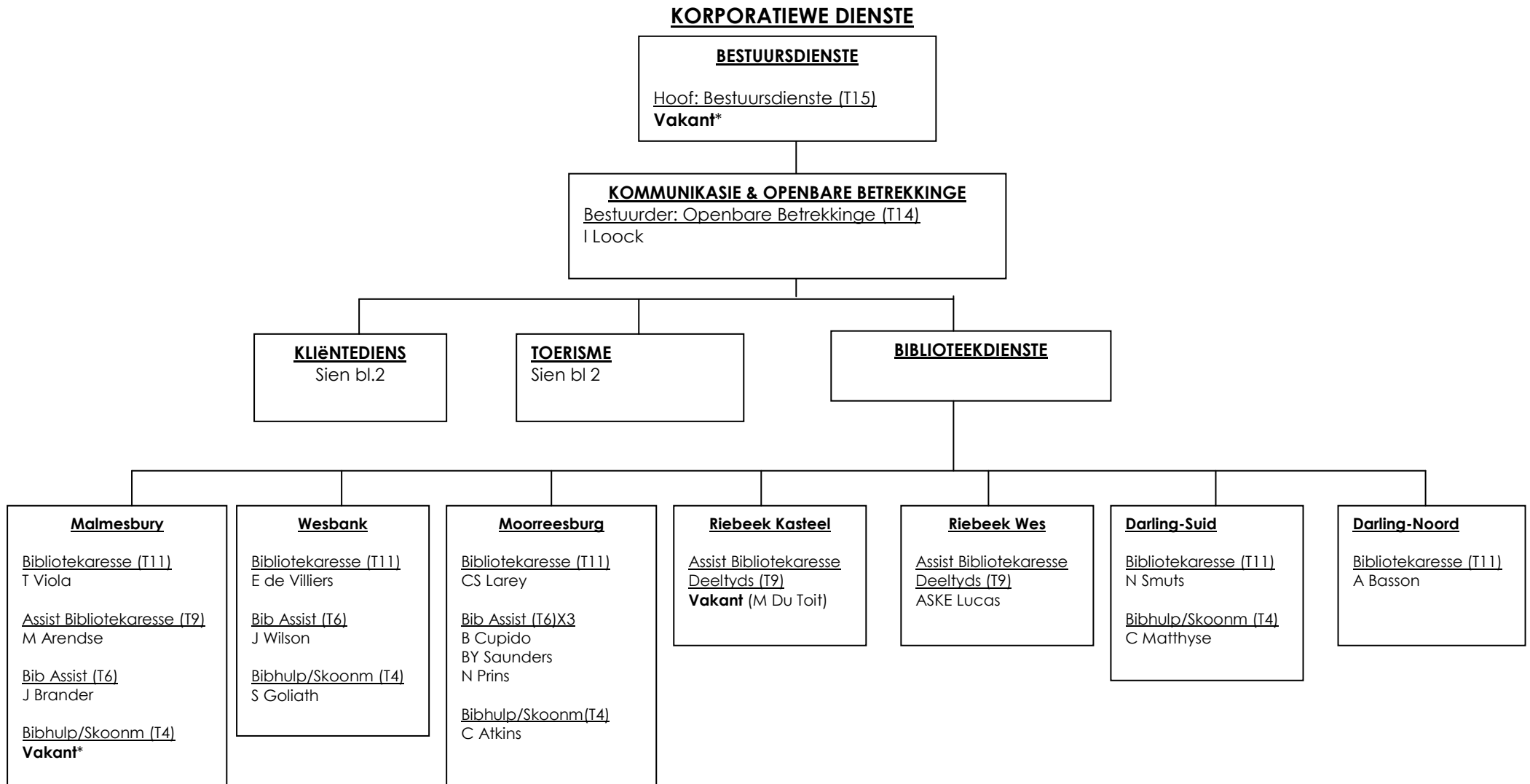
Uitvoerende Sekretaresse: MB (T8)  
M Morris

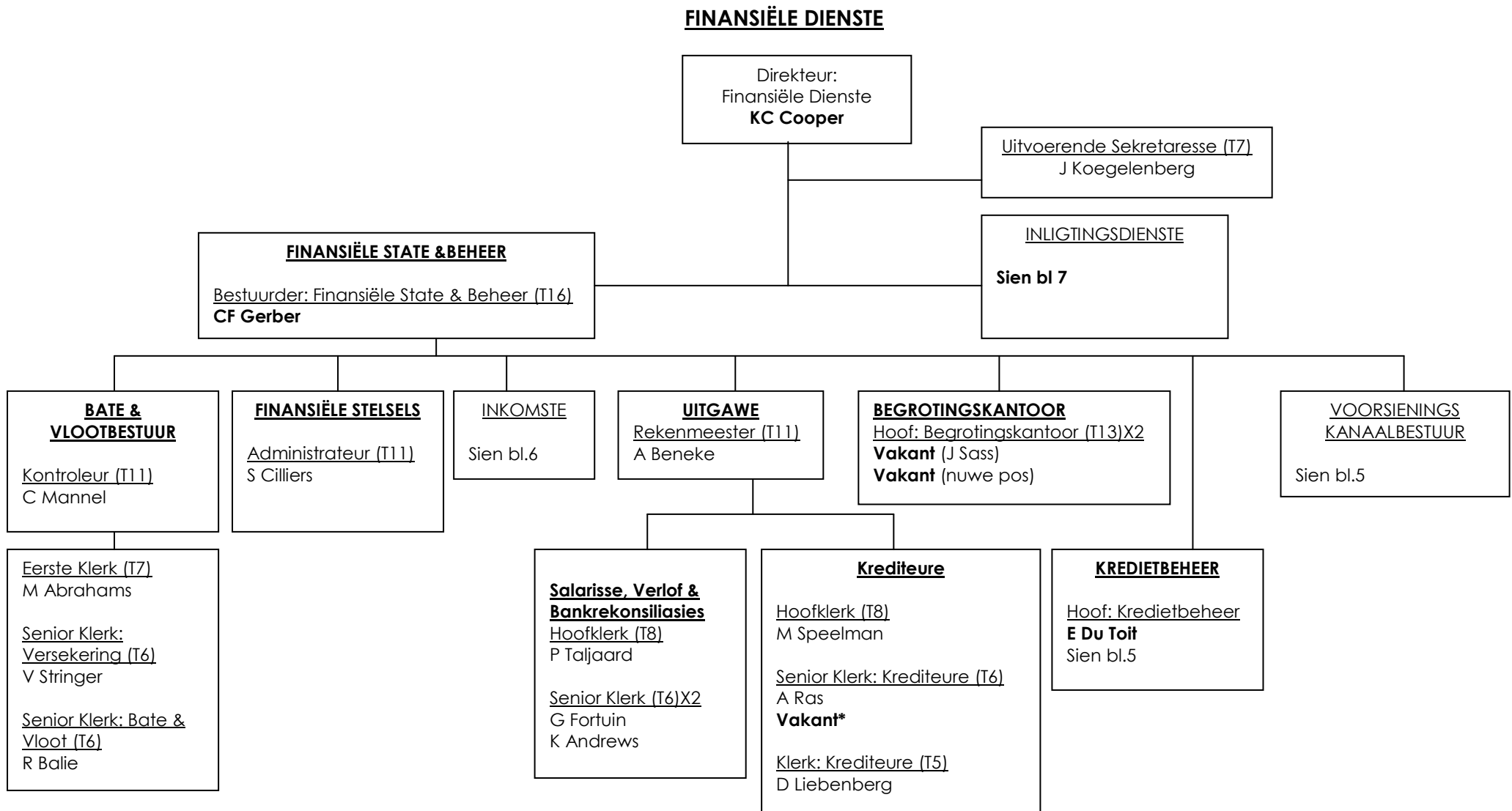


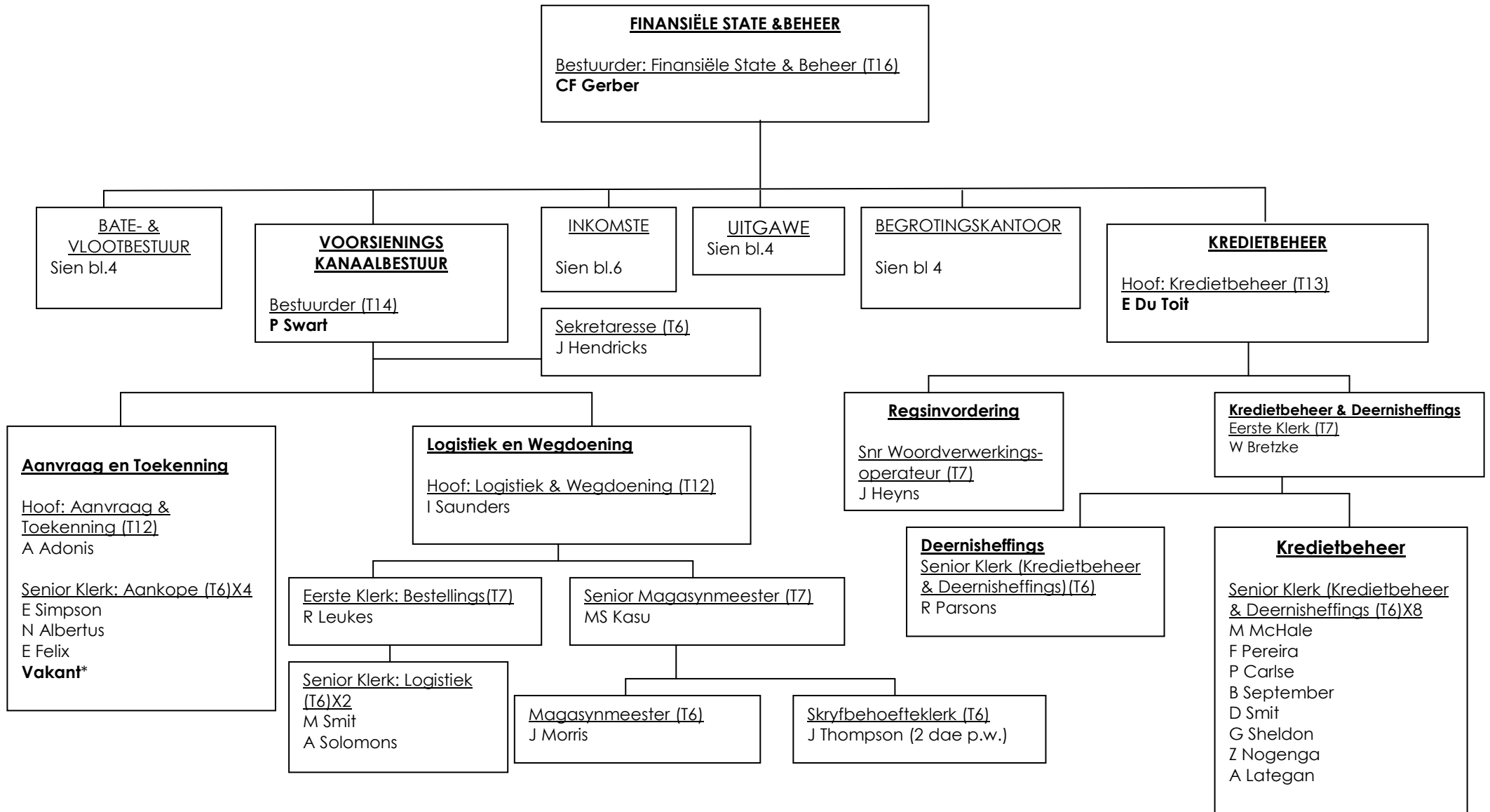
### **KORPORATIEWE DIENSTE**

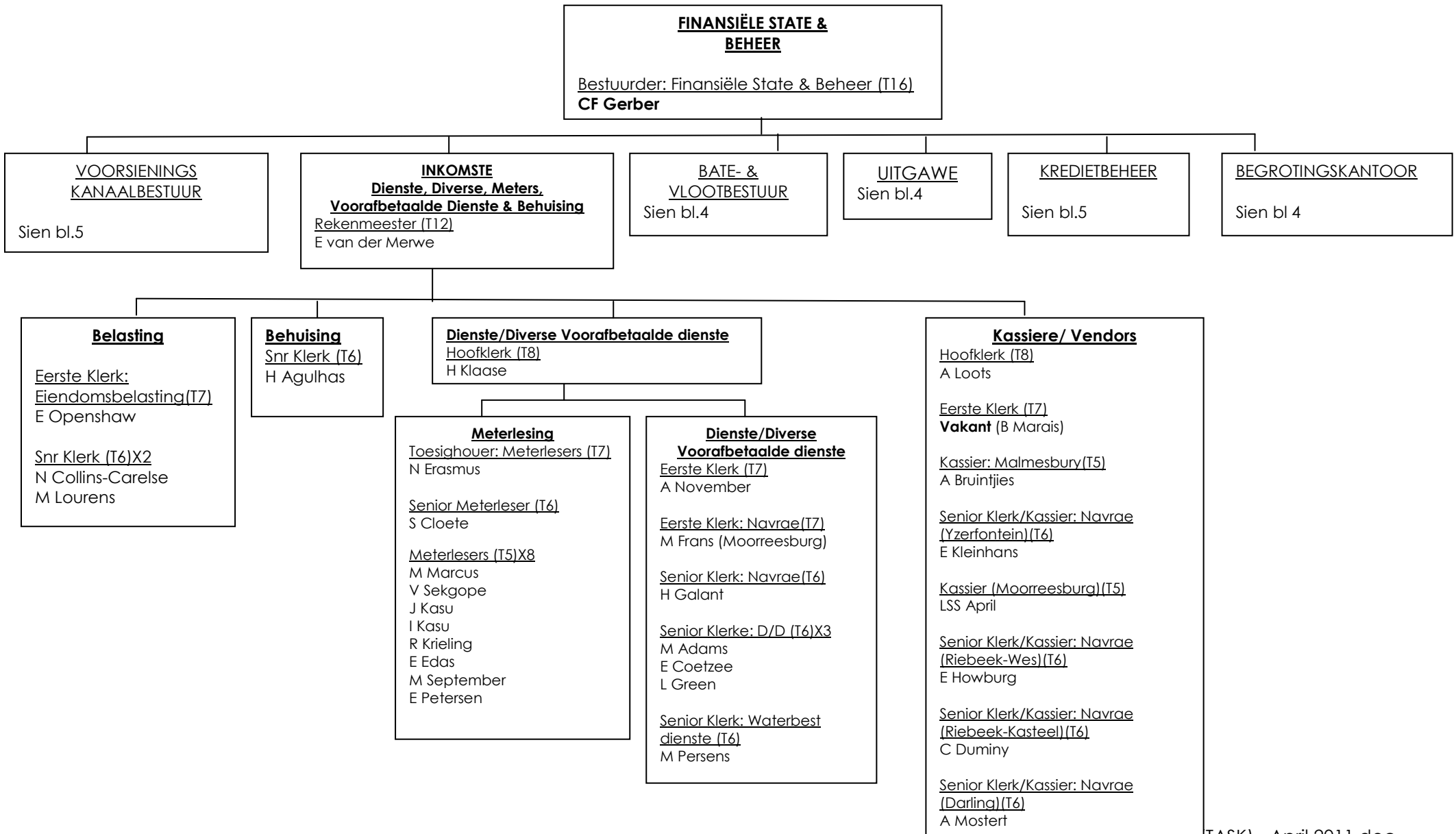


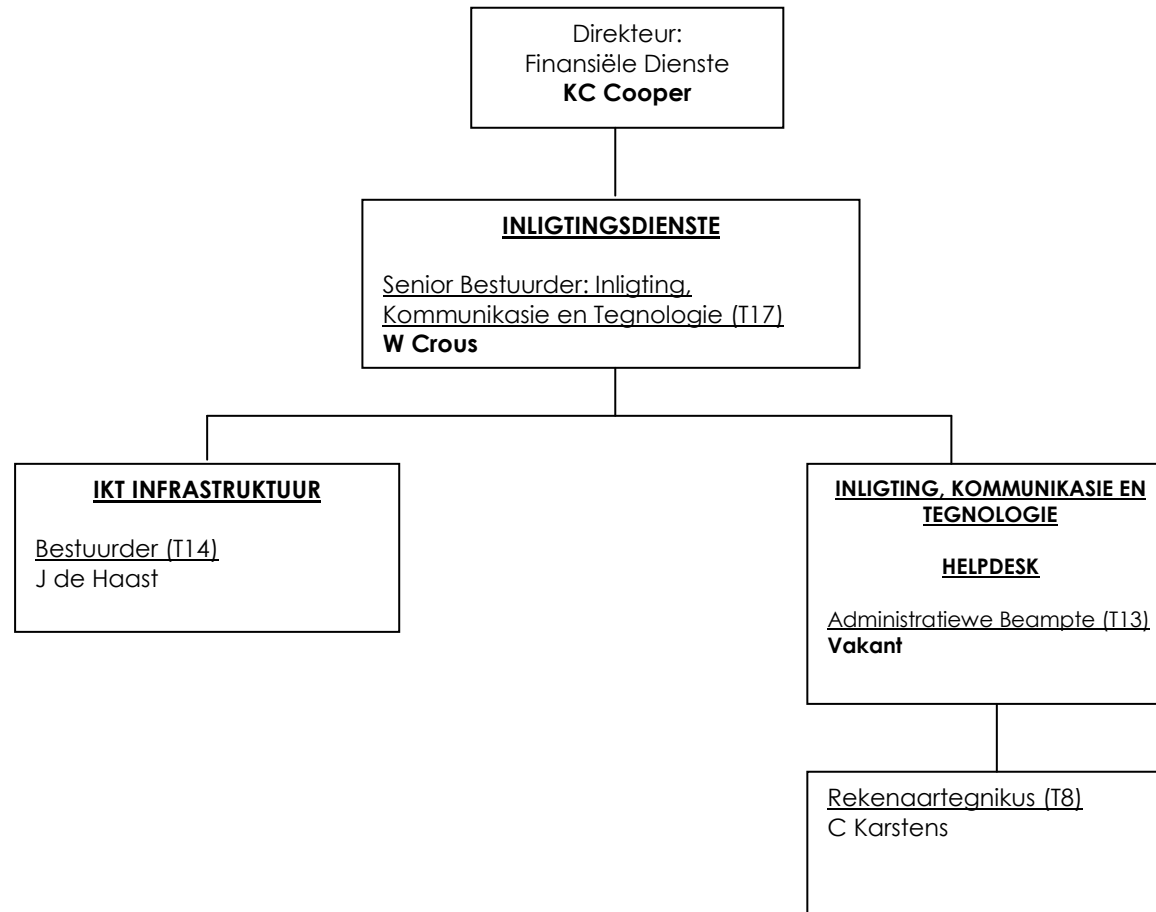






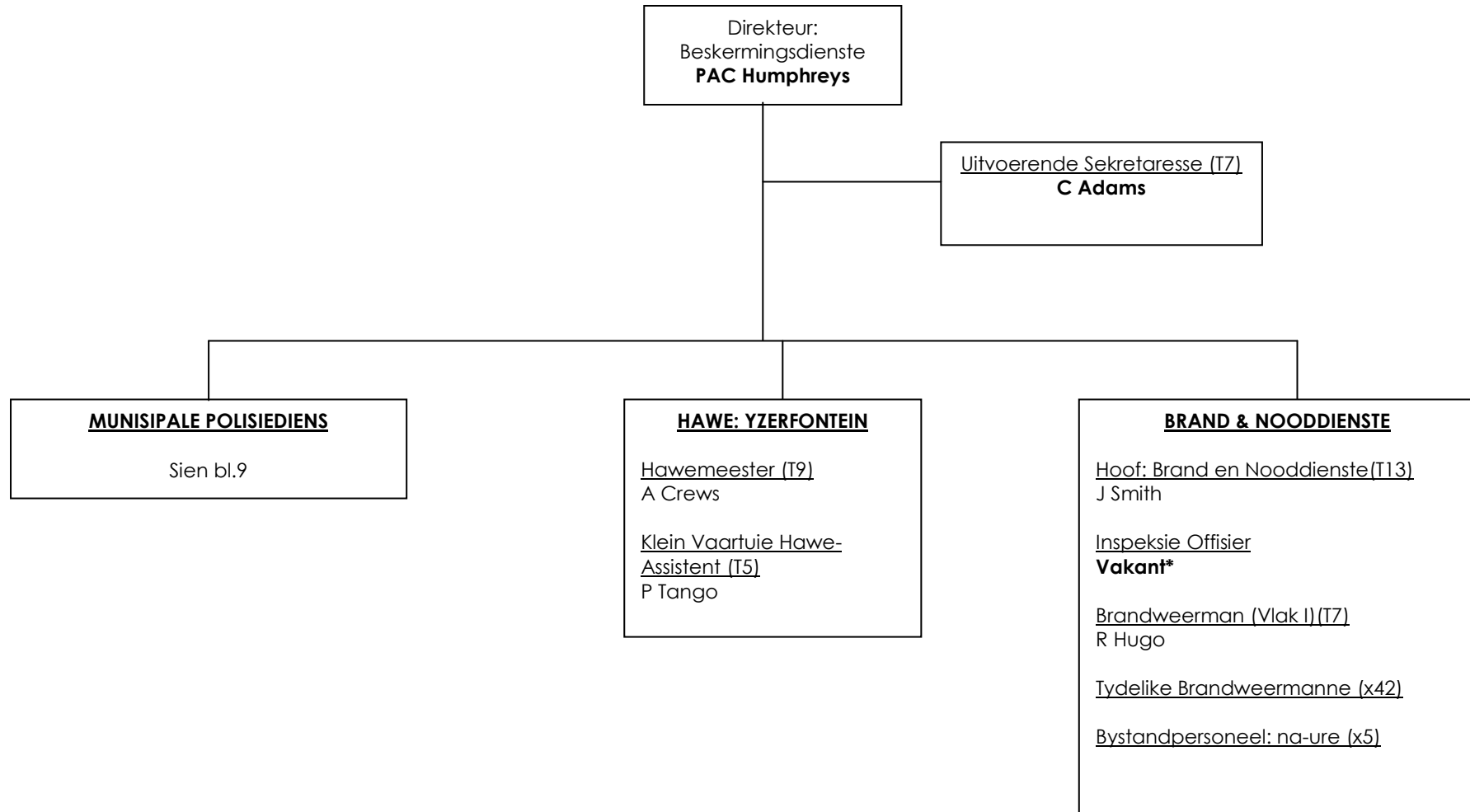




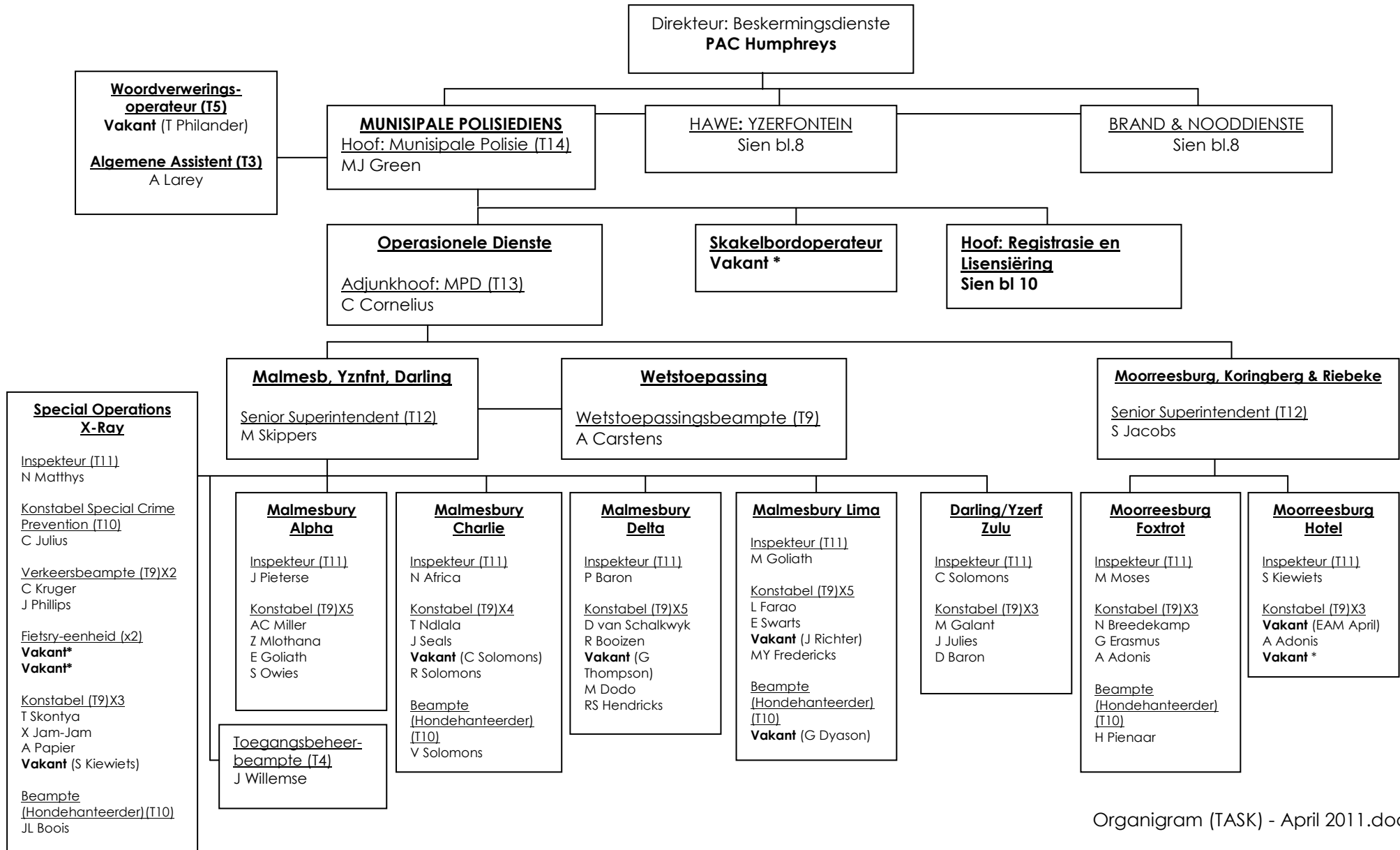


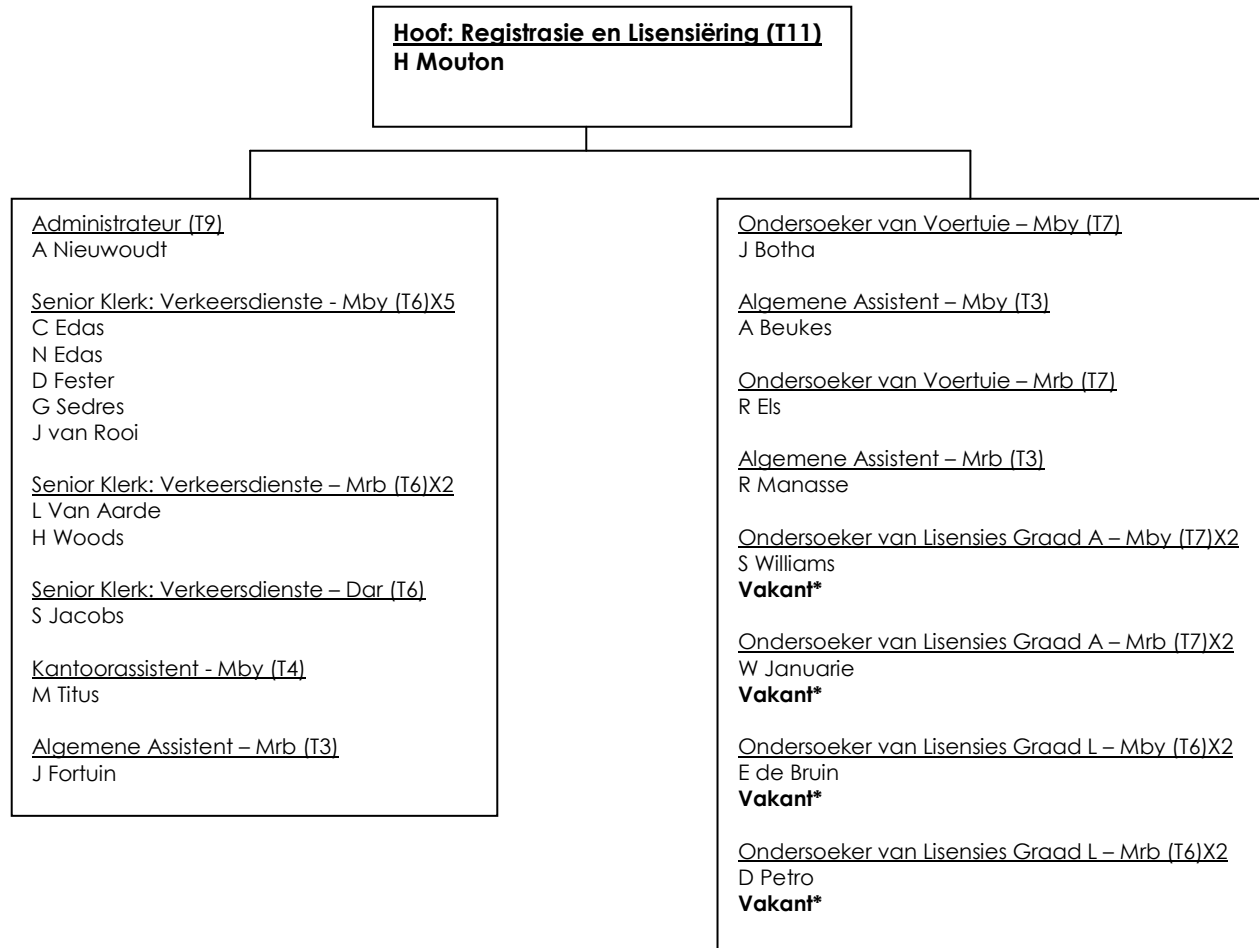


## BESKERMINGSDIENSTE

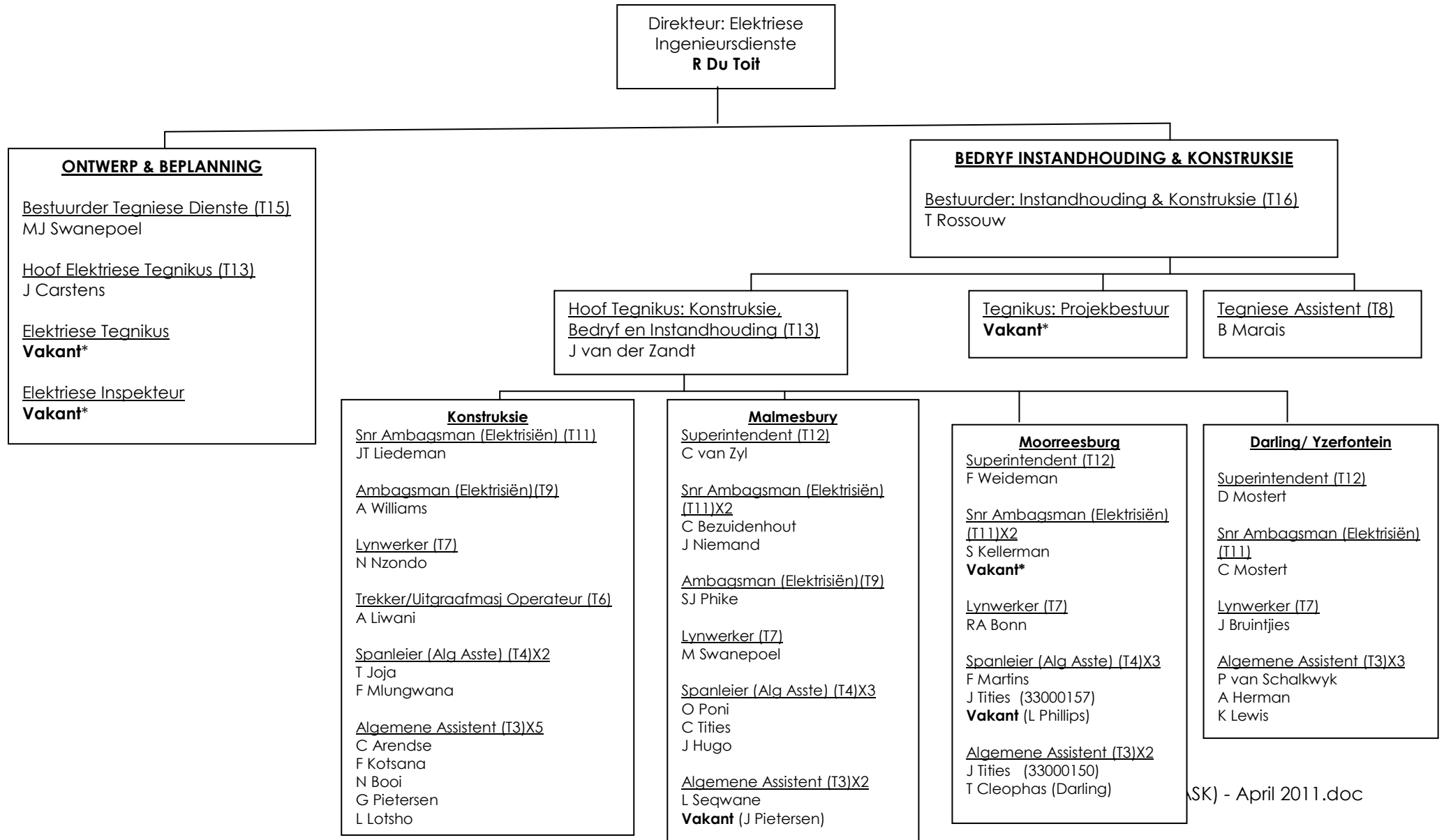


## BESKERMINGSDIENSTE

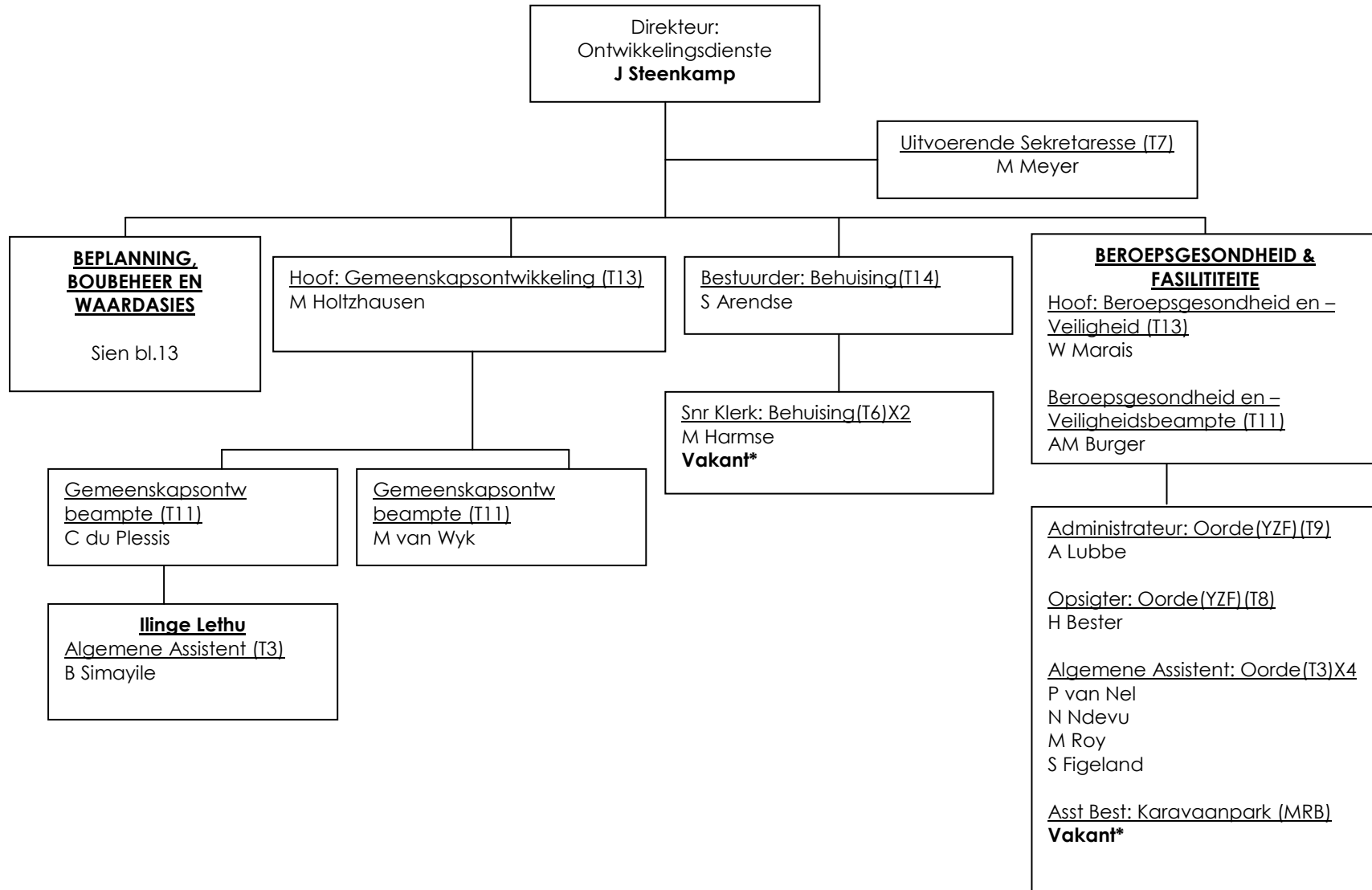




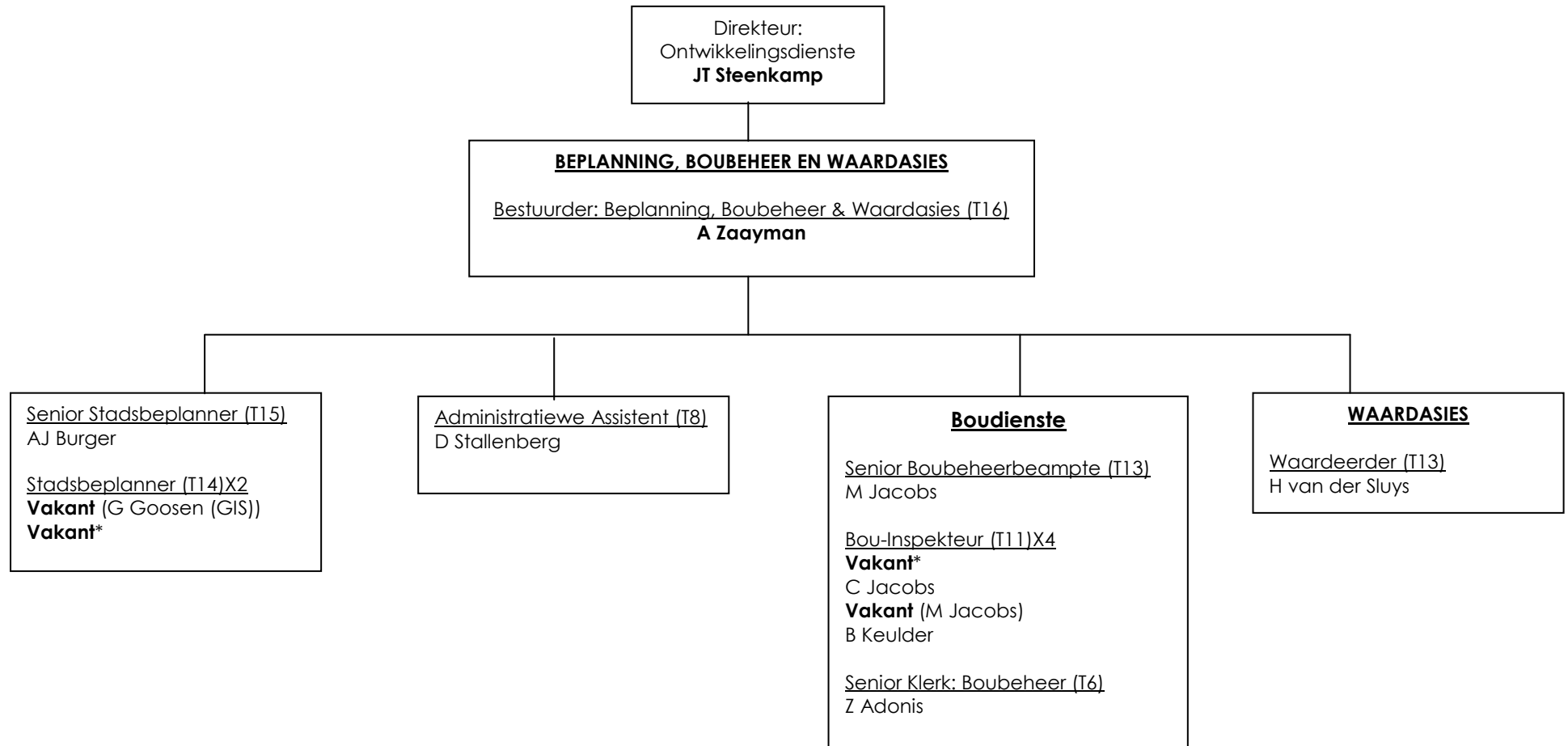
## ELEKTRIESE INGENIEURSDIENSTE



## ONTWIKKELINGSDIENSTE



## ONTWIKKELINGSDIENSTE



## SIVIELE INGENIEURSDIENSTE

