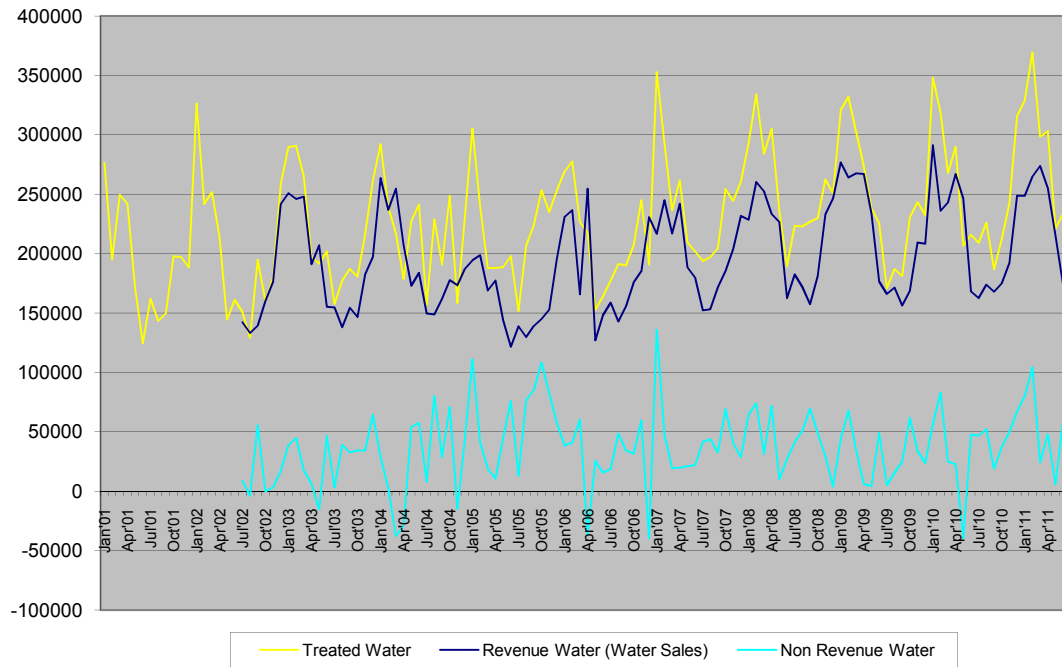


SWARTLAND MUNICIPALITY																	
Malmesbury, Abbotdale, Kalbaskraal, Riverlands, Chatsworth																	
Month	Year	BULK WATER SUPPLY				TREATED WATER SUPPLY							TOTALS (ONLY NETWORK LOSSES)				
		Raw Water Supply	Treated Water	Monthly Losses (m³)	Monthly Losses (%)	Boreholes	Paardeberg Dam	WCMD	TOTAL	Consumption	Monthly Losses (m³)	Monthly Losses (%)	Monthly Losses (m³)	Monthly Losses (%)	Annual Losses (m³)	Annual Losses (%)	
Jan'01	00/01																
Feb'01																	
Mar'01																	
Apr'01																	
May'01																	
Jun'01																	
Jul'01																	
Aug'01																	
Sep'01																	
Oct'01																	
Nov'01																	
Dec'01		01/02															
Jan'02																	
Feb'02																	
Mar'02																	
Apr'02																	
May'02																	
Jun'02																	
Jul'02																	
Aug'02																	
Sep'02																	
Oct'02																	
Nov'02	02/03																
Dec'02																	
Jan'03																	
Feb'03																	
Mar'03																	
Apr'03																	
May'03																	
Jun'03																	
Jul'03																	
Aug'03																	
Sep'03																	
Oct'03																	
Nov'03	03/04																
Dec'03																	
Jan'04																	
Feb'04																	
Mar'04																	
Apr'04																	
May'04																	
Jun'04																	
Jul'04																	
Aug'04																	
Sep'04																	
Oct'04																	
Nov'04	04/05																
Dec'04																	
Jan'05																	
Feb'05																	
Mar'05																	
Apr'05																	
May'05																	
Jun'05																	
Jul'05																	
Aug'05																	
Sep'05																	
Oct'05																	
Nov'05	05/06																
Dec'05																	
Jan'06																	
Feb'06																	
Mar'06																	
Apr'06																	
May'06																	
Jun'06																	
Jul'06																	
Aug'06																	
Sep'06																	
Oct'06																	
Nov'06	06/07																
Dec'06																	
Jan'07																	
Feb'07																	
Mar'07																	
Apr'07																	
May'07																	
Jun'07																	
Jul'07																	
Aug'07																	
Sep'07																	
Oct'07																	
Nov'07	07/08																
Dec'07																	
Jan'08																	
Feb'08																	
Mar'08																	
Apr'08																	
May'08																	
Jun'08																	
Jul'08																	
Aug'08																	
Sep'08																	
Oct'08																	
Nov'08	08/09																
Dec'08																	
Jan'09																	
Feb'09																	
Mar'09																	
Apr'09																	
May'09																	
Jun'09																	
Jul'09																	
Aug'09																	
Sep'09																	
Oct'09																	
Nov'09	09/10																
Dec'09																	
Jan'10																	
Feb'10																	
Mar'10																	
Apr'10																	
May'10																	
Jun'10																	
Jul'10																	
Aug'10																	
Sep'10																	
Oct'10																	
Nov'10	10/11																
Dec'10																	
Jan'11																	
Feb'11																	
Mar'11																	
Apr'11																	
May'11																	
Jun'11																	
Jul'11																	
Aug'11																	
Sep'11																	
Oct'11																	
Nov'11																	
Dec'11																	

ANNUAL TOTALS				
Year	Supply	Consumption	Losses m³	Losses %
2001/2002	2370180	2002587	21888	8.7%
2002/2003	2500473	2200587	21888	8.7%
2003/2004	2575832	2292478	28353	11.0%
2004/2005	2821004	2300399	51705	20.5%
2005/2006	2811087	2364379	56807	21.5%
2006/2007	2792470	2337350	41920	16.2%
2007/2008	2386580	2481823	53475	17.8%
2008/2009	3107700	3857791	44909	14.5%
2009/2010	2882103	2521109	35994	12.4%
2010/2011	3146105	2550992	59513	18.9%

### WATER BALANCE FOR MALMESBURY, ABBOTSDALE, KALBASKRAAL, RIVERLANDS AND CHATSWORTH (KI/Month)



### NON REVENUE WATER [% / Month]

